

Supplementary Materials

Stretchable Magneto-Mechanical Configurations with High magnetic Sensitivity Based on “Gel-Type” Soft Rubber for Intelligent Applications

Vineet Kumar and Sang-Shin Park *

School of Mechanical Engineering, Yeungnam University, 280 Daehak-Ro, Gyeongsan 38541, Gyeongbuk, Republic of Korea; vineetfri@gmail.com

* Correspondence: pss@ynu.ac.kr

Results and discussion

SEM and XRD of the filler particles

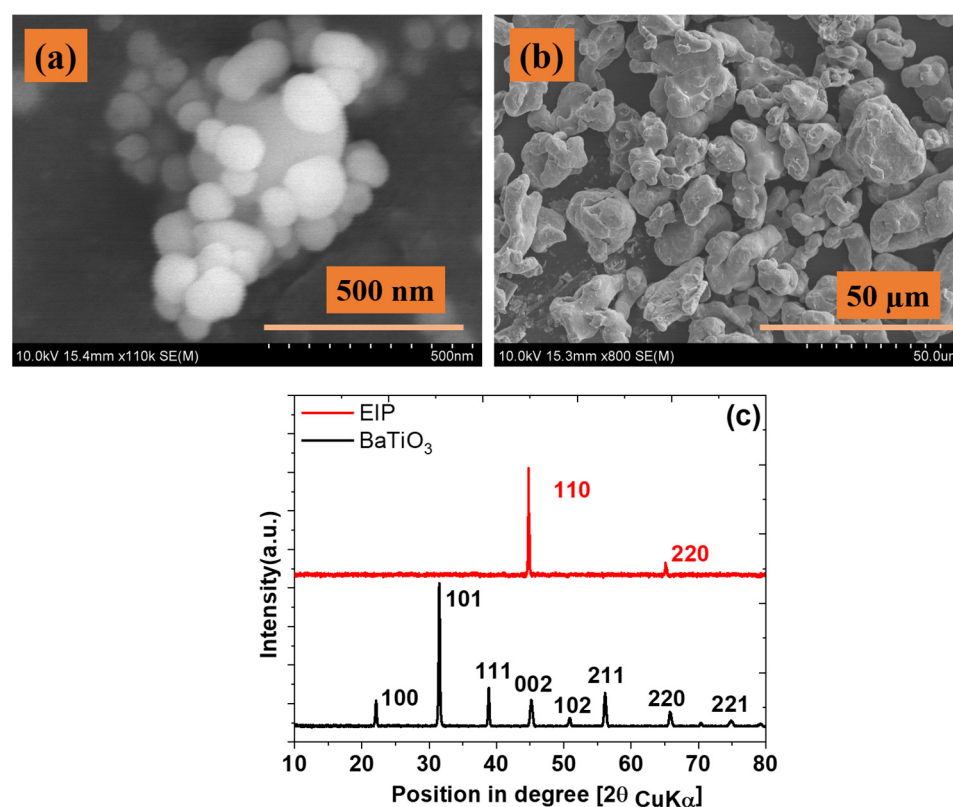


Figure S1. SEM of the filler particles: (a) BaTiO₃; (b) EIP; (c) XRD of both fillers.