

## Supplementary Materials

# Fabrication and Evaluation of Silk Sericin-Derived Hydrogel for the Release of the Model Drug Berberine

<sup>1</sup> State Key Laboratory of Silkworm Genome Biology, College of Sericulture, Textile and Biomass Sciences, Southwest University, Chongqing 400715, China; yanchi123@email.swu.edu.cn (C.Y.); liangjw@email.swu.edu.cn (J.L.); fangritian@email.swu.edu.cn (H.F.); mxz9988@email.swu.edu.cn (X.M.); lovxury@email.swu.edu.cn (J.C.)

<sup>2</sup> Key Laboratory of Mariculture and Enhancement of Zhejiang Province, Zhejiang Marine Fisheries Research Institute, Zhoushan 316021, China; 2008uky@gmail.com (Z.Z.); XZH239@uky.edu (Q.L.); huhm@zju.edu.cn (H.H.)

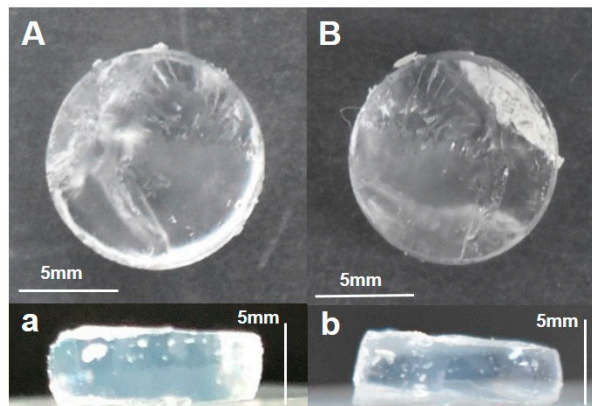
\* Correspondence: xzhang@swu.edu.cn

† These authors contributed equally to this work.

### Table of content:

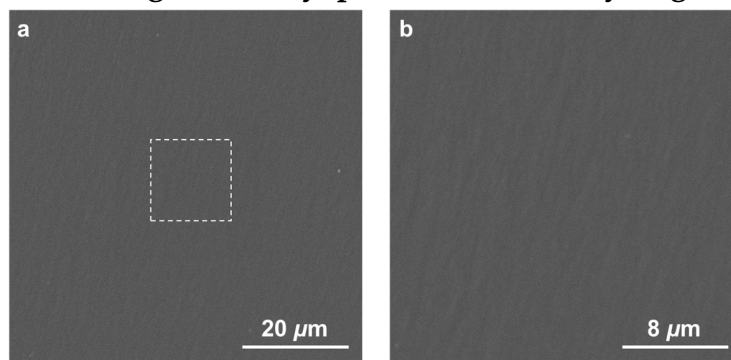
1. Representative images of PEGDA hydrogel .....	2
2. Representative SEM images of the lyophilized PEGDA hydrogel .....	2
3. Morphologies of HEK-293 cells of each group in MTT assay on day 1 and day 3 .....	2
4. Standard calibration curve of berberine in diH <sub>2</sub> O .....	3
5. Standard calibration curve of berberine in PBS .....	3

## 1. Representative images of PEGDA hydrogel



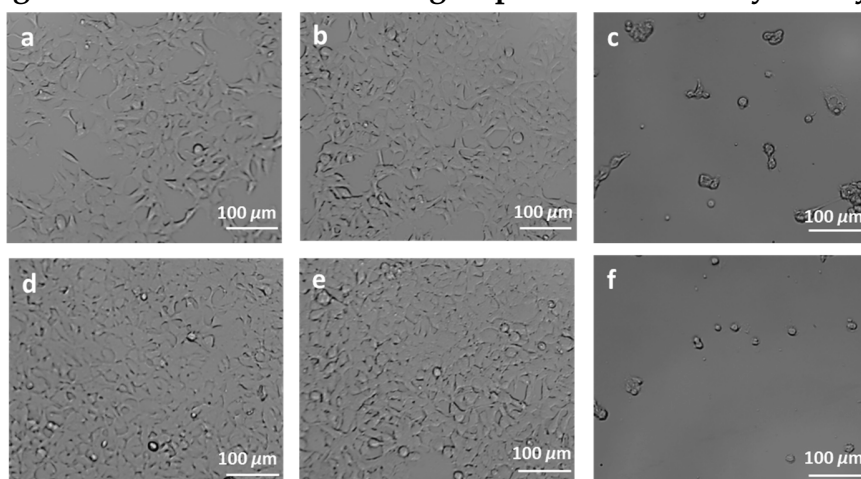
**Figure S1.** PEGDA hydrogel was prepared by mixing PEGDA and diH<sub>2</sub>O in a 1:1 ratio (v/v), then illuminating under a 405 nm LED for 30 minutes. (A) and (B) are the top view images of the prepared PEGDA hydrogel before and after lyophilization, respectively; (a) and (b) are the corresponding side view images of (A) and (B).

## 2. Representative SEM images of the lyophilized PEGDA hydrogel



**Figure S2.** (a) shows representative SEM images of the lyophilized PEGDA hydrogel; (b) is the zoom-in SEM image of the region marked by a dashed line in (a).

## 3. Morphologies of HEK-293 cells of each group in the MTT assay on day 1 and day 3



**Figure S3.** Representative morphologies of HEK-293 cells of each group on day 1 ((a) blank, (b) 20% SS/PEGDA, (c) positive control) and day 3 ((d) blank, (e) 20% SS/PEGDA, (f) positive control).

#### 4. Standard calibration curve of berberine in diH<sub>2</sub>O

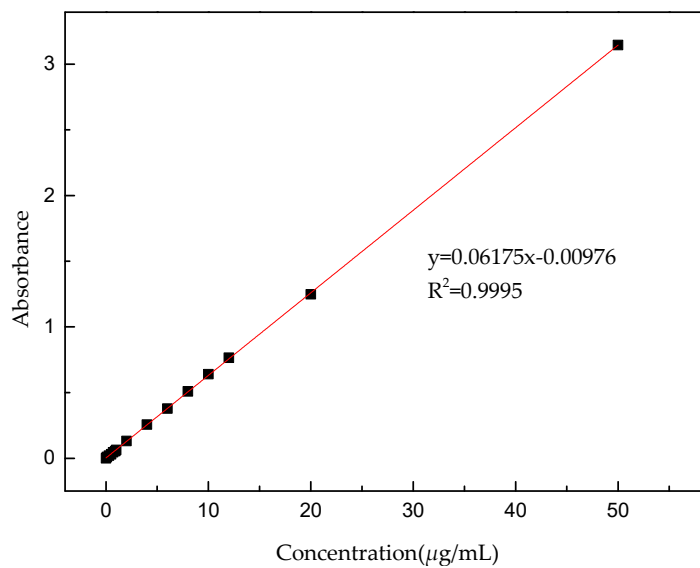


Figure S4. Standard calibration curve of berberine in diH<sub>2</sub>O.

#### 5. Standard calibration curve of berberine in PBS

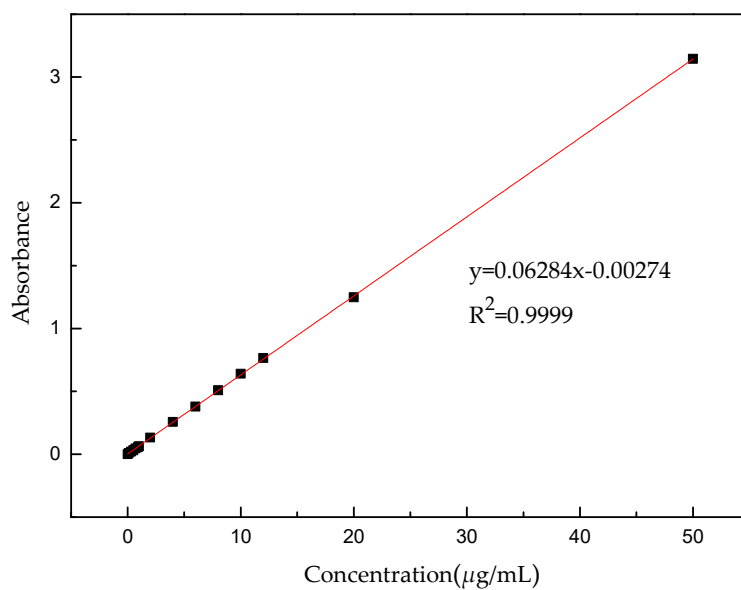


Figure S5. Standard calibration curve of berberine in PBS (pH = 7.4).