

*Supplemental information for*

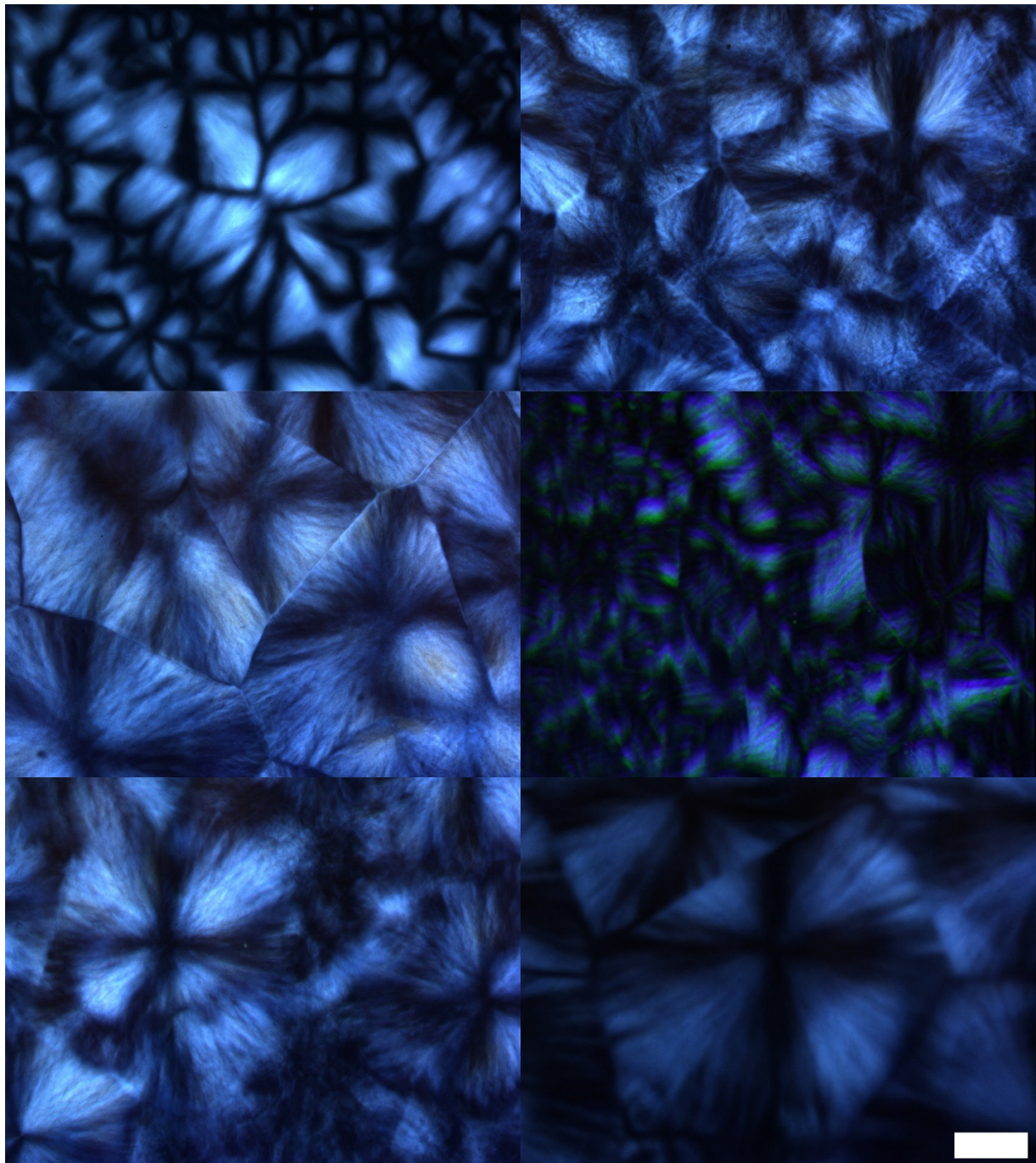
# **Supramolecular Fractal Growth of Self-Assembled Fibrillar Networks**

**Pedram Nasr<sup>1</sup>, Hannah Leung<sup>1</sup>, France-Isabelle Auzanneau<sup>2</sup>, and Michael A. Rogers<sup>1,\*</sup>**

<sup>1</sup> Department of Food Science, University of Guelph; Guelph N1G 2W1, ON, Canada; pnasr@uoguelph.ca (P.N.); hleung07@uoguelph.ca (H.L.)

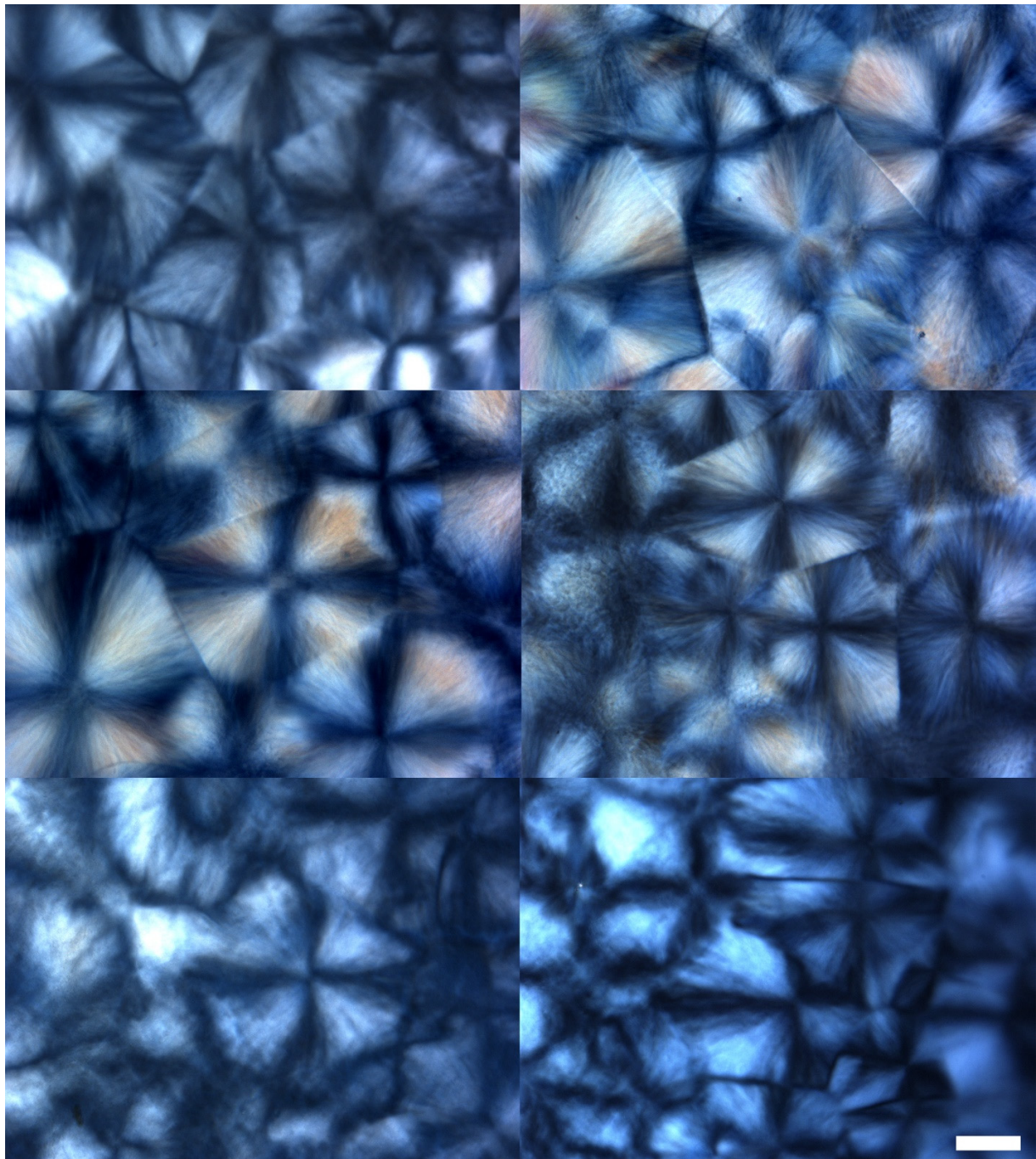
<sup>2</sup> Department of Chemistry, University of Guelph; Guelph N1G 2W1, ON, Canada; fauzanne@uoguelph.ca

\* Correspondence: mroger09@uoguelph.ca; Tel.: +11-519-824-4120 (ext. 54327)

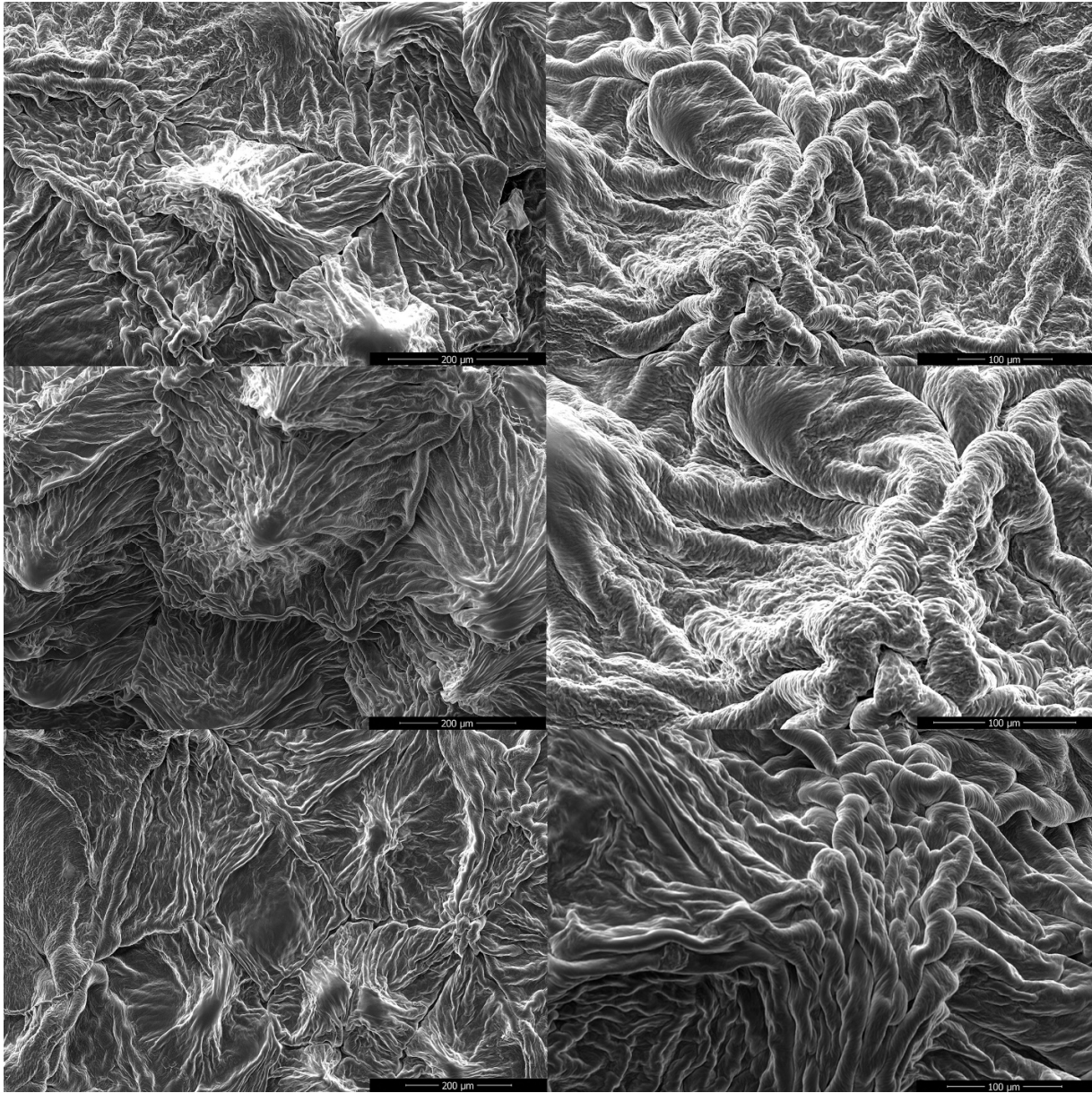


**Figure S1** 10x polarized light micrographs of 5wt% DBS in PEG200 crystallized in triplicate. Scale bar = 100  $\mu\text{m}$ .



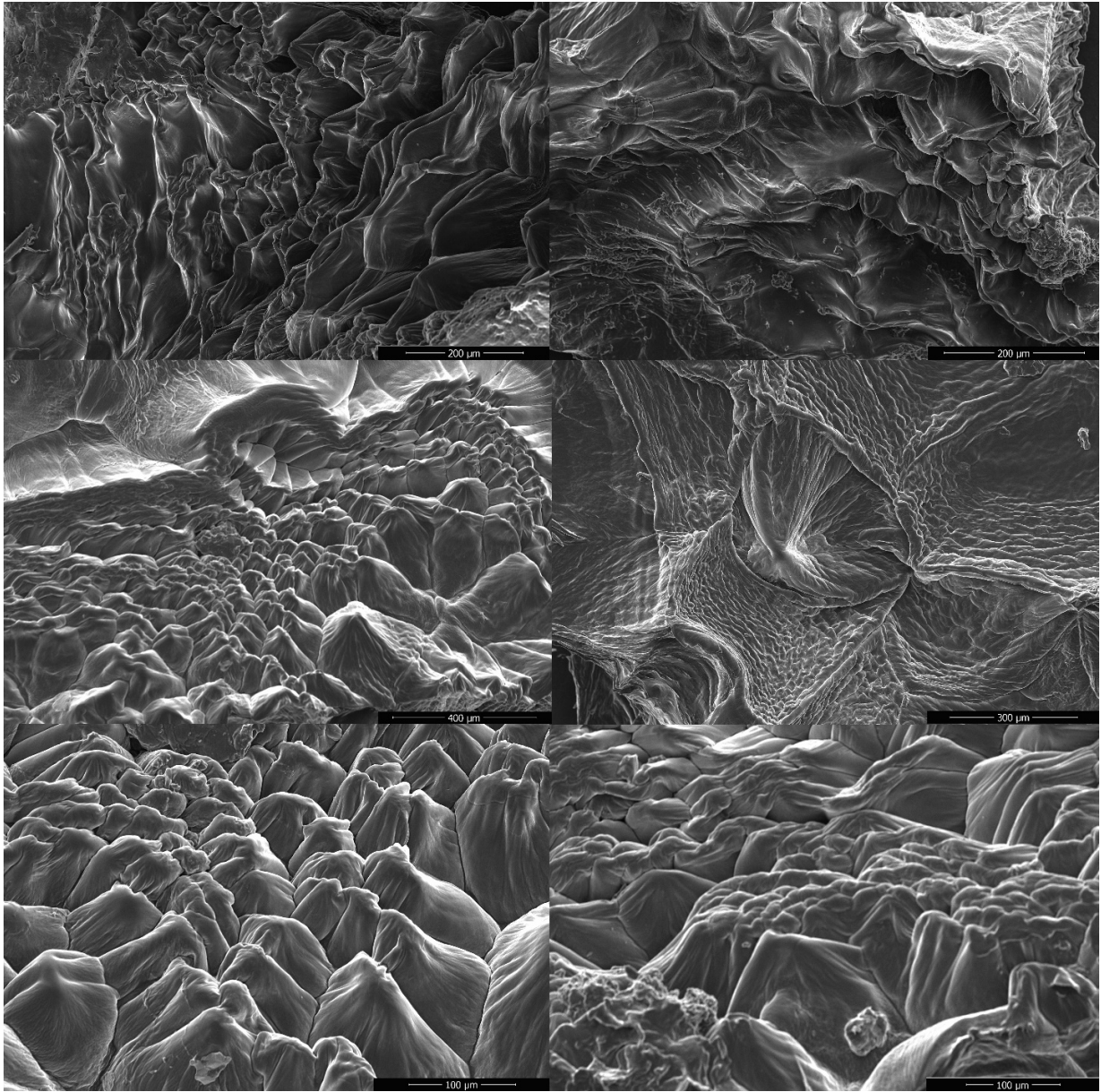


**Figure S2** 10× polarized light micrographs of 5wt% DBS in PEG600 crystallized in triplicate. Scale bar = 100  $\mu\text{m}$ .



**Figure S3** Scanning electron micrographs of 5wt% DBS in PEG200 crystallized on three separate SEM Spindles.





**Figure S4** Scanning electron micrographs of 5wt% DBS in PEG600 crystallized on three separate SEM spindles.