

## Supplementary information

### Typical fluorescent sensors exploiting molecularly imprinted hydrogels for environmentally and medically important analytes detection

Lihua Zou <sup>1#</sup>, Rong Ding<sup>2#</sup>, Xiaolei Li <sup>2</sup>, Haohan Miao <sup>3</sup>, Jingjing Xu <sup>1,2,\*</sup> and

Guoqing Pan <sup>3,\*</sup>

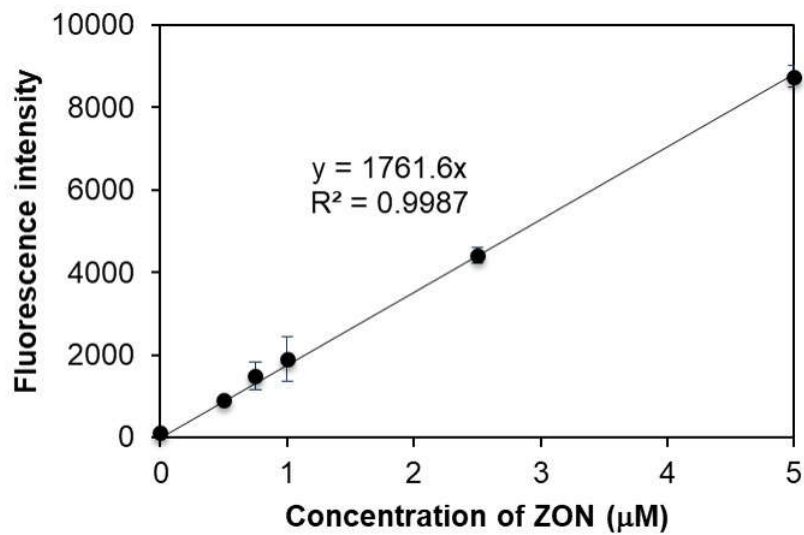
<sup>1</sup> Center for Molecular Recognition and Biosensing, School of Life Sciences, Shanghai University, Shanghai 200444, P. R. China

<sup>2</sup> Sino-European School of Technology of Shanghai University, Shanghai University, CN-200444 Shanghai, P. R. China

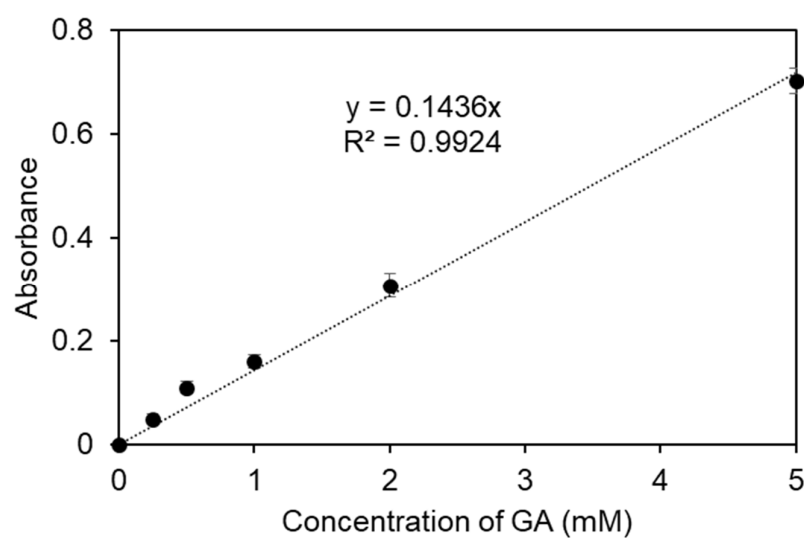
<sup>3</sup> Institute for Advanced Materials, School of Materials Science and Engineering, Jiangsu University, Zhenjiang 212013, Jiangsu, China

<sup>#</sup> Both contributed equally to the work.

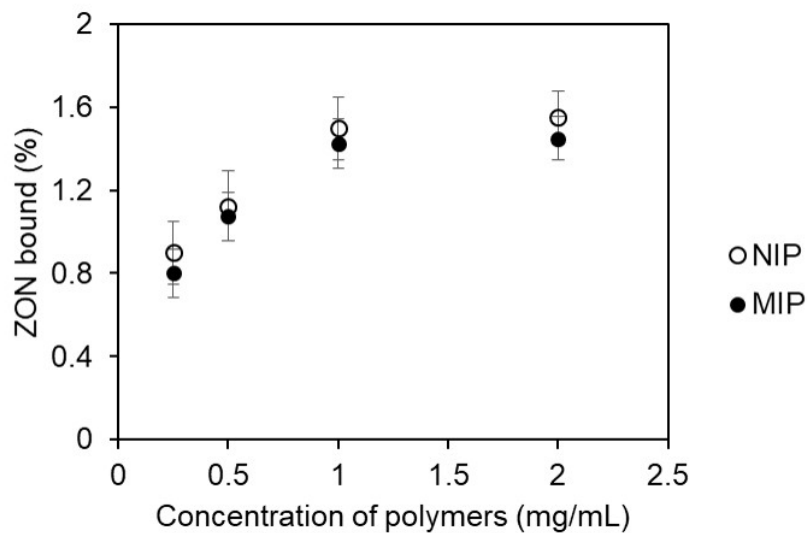
\* Corresponding authors: [jingjing\\_xu@shu.edu.cn](mailto:jingjing_xu@shu.edu.cn) (J. Xu); [panguoqing@ujs.edu.cn](mailto:panguoqing@ujs.edu.cn) (G. Pan).



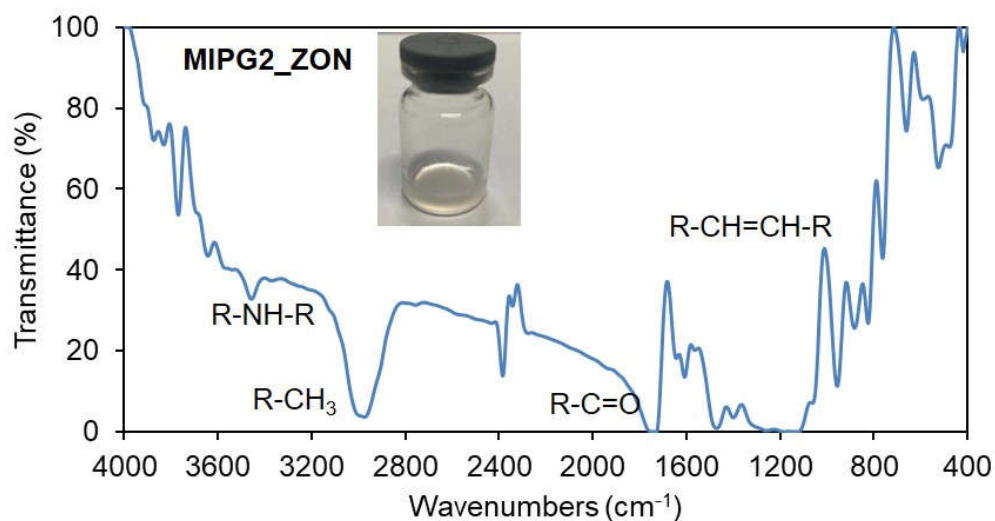
**Figure S1.** Fluorescence calibration curve of ZON in ACN ( $\text{Ex} = 280 \text{ nm}$ ,  $\text{Em} = 455 \text{ nm}$ , slit:  $5 \text{ nm}$ ).



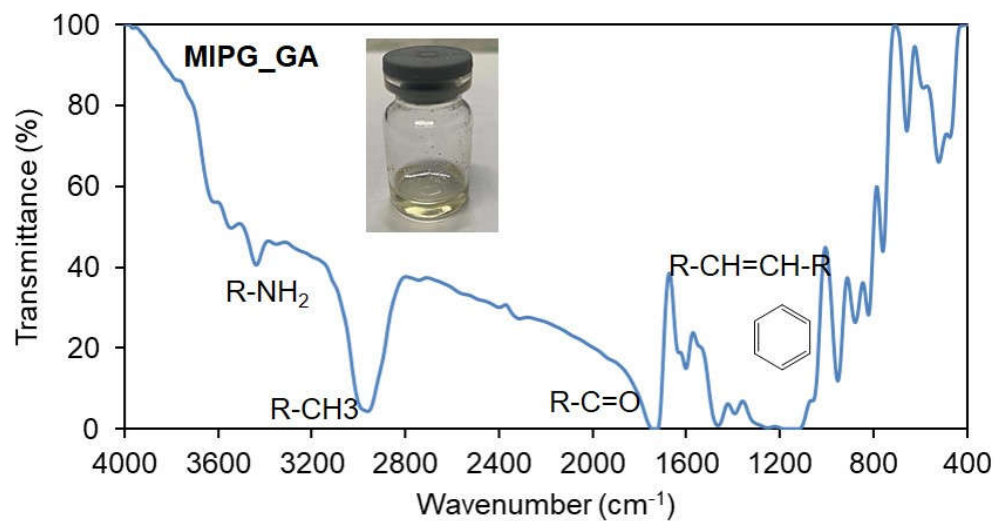
**Figure S2.** Calibration curve of glucuronic acid in water (Quantified by the method of Dubois with absorbance read at  $490 \text{ nm}$ ).



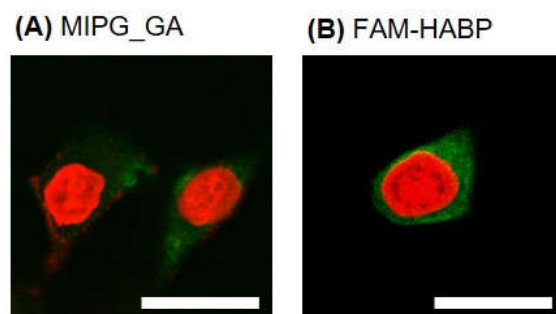
**Figure S3.** Equilibrium binding isotherms for 2.5  $\mu\text{M}$  ZON on ZON-imprinted polymers (MIP) and NIP at concentrations ranging from 0.25 to 2 mg/mL in 1 mL ACN. MIP here were synthesized using the similar protocol for MIPG2, in the presence of ZON. Data are means from three independent experiments. The error bars represent standard deviations.



**Figure S4.** FT-IR spectra of MIPG2\_ZON with solution image insert, where some special peaks were highlighted.



**Figure S5.** FT-IR spectra of MIPG\_GA with solution image insert, where some special peaks were highlighted.



**Figure S6.** Confocal microscope images of fixed HeLa cells incubated MIPG\_GA (A) and FAM-HABP (B), that exhibit green fluorescence under proper filter sets of confocal microscopy. Nuclei stained with PI (red). Scale bar: 50  $\mu\text{m}$ .