

PEG Reinforced Scaffold Promotes Uniform Distribution of Human MSC-created Cartilage Matrix

Kanyakorn Riewruja ^{1,2}, Alyssa M Aguglia ^{1,3}, Sophie Hines ¹, Meagan J. Makarczyk ^{1,3}, Sittisak Honsawek², and Hang Lin ^{1,3*}

¹ Department of Orthopaedic Surgery, University of Pittsburgh School of Medicine; 450 Technology Drive, Rm 217, Pittsburgh, Pennsylvania, 15219, USA
² Osteoarthritis and Musculoskeleton Research Unit, Faculty of Medicine, Chulalongkorn University, King Chulalongkorn Memorial Hospital, Thai Red Cross Society, Bangkok 10330, Thailand
³ Department of Bioengineering, University of Pittsburgh Swanson School of Engineering; 450 Technology Drive, Rm 217, Pittsburgh, Pennsylvania, 15219, USA
 * Correspondence: hal46@pitt.edu;

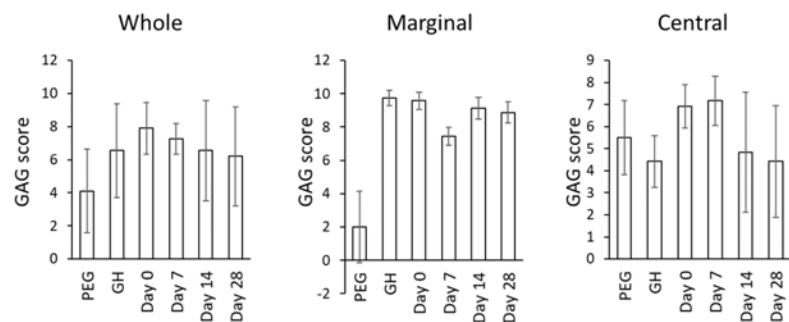


Figure S1. Assessing GAG distribution with semi-quantitative scores. Based on the staining intensity of the whole, marginal and central areas in each image of Figure 2, a score from 0 (no GAG) to 10 (most GAG) was given (n=8 fields).

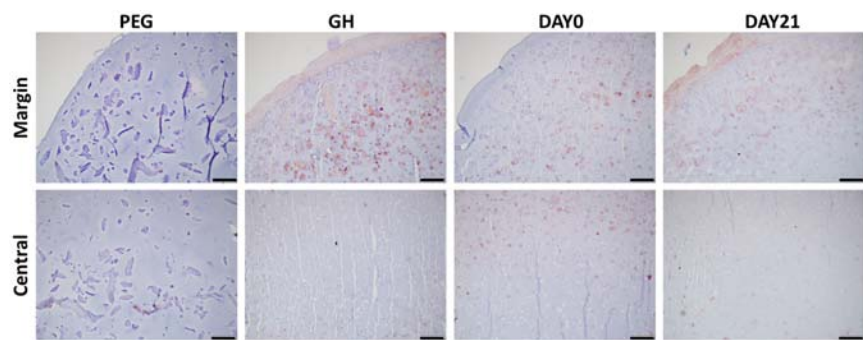


Figure S2: Collagen type II immunohistochemistry (IHC). Bar=100µm.

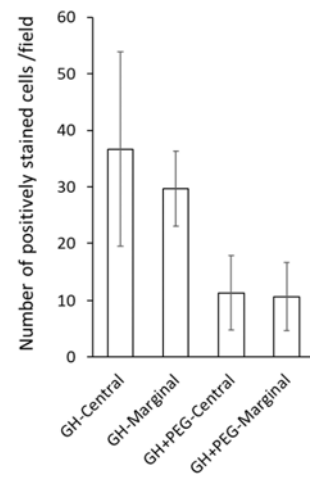


Figure S3: Qualifying ki67 positive cells in each field (512 μ m \times 320 μ m). N=3.