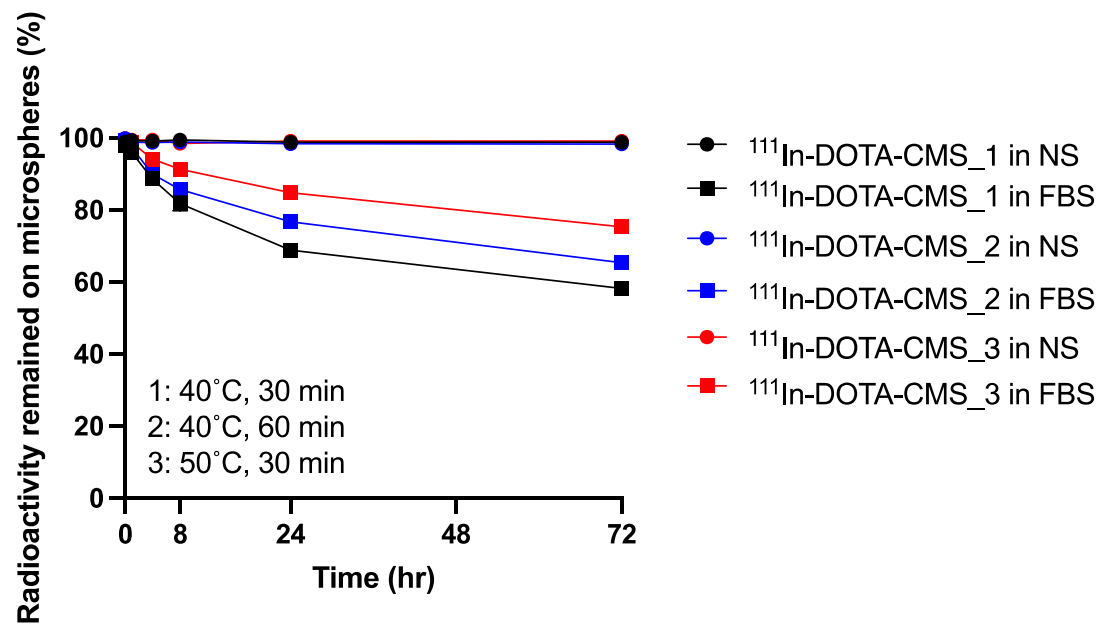
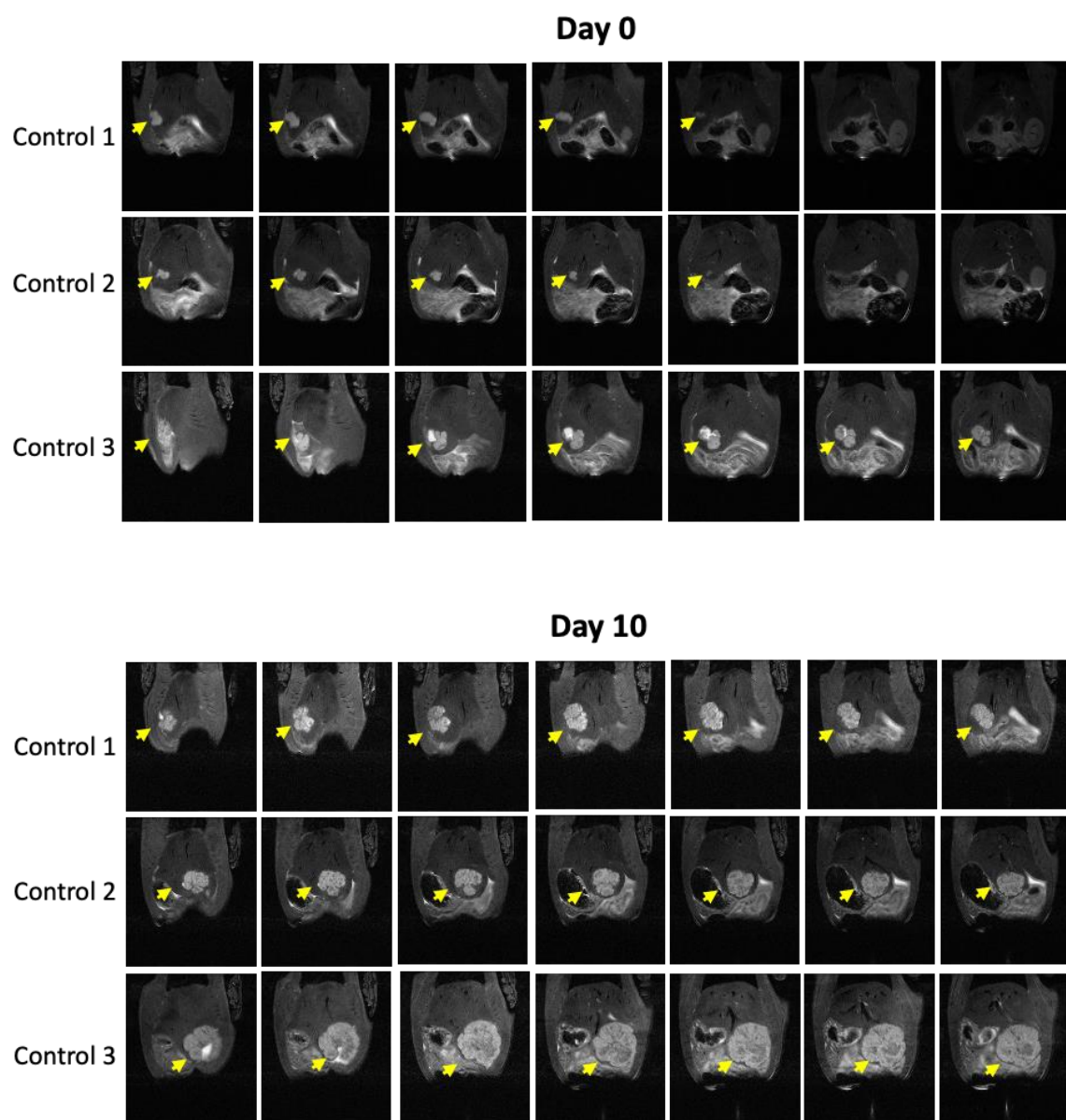


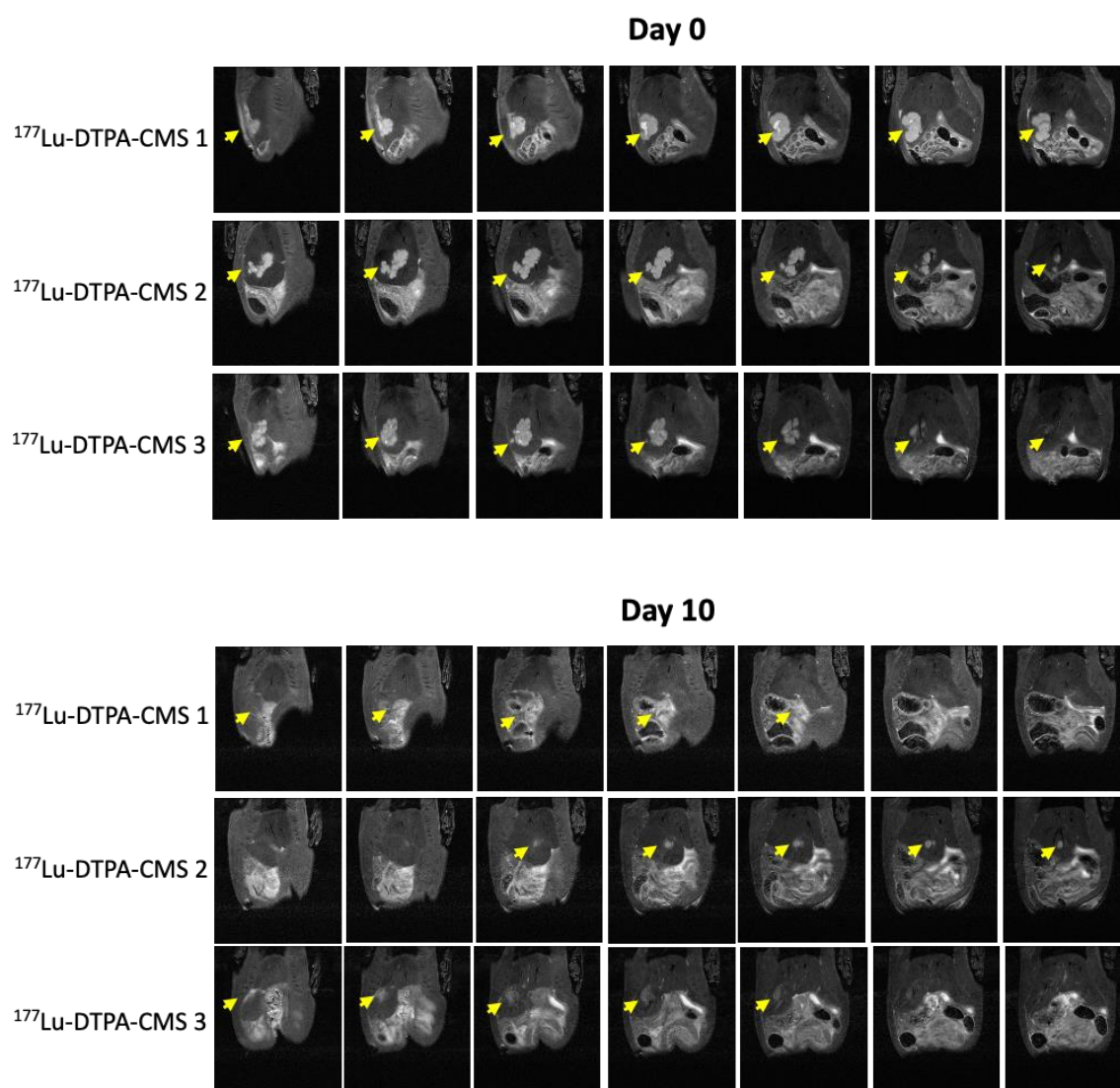
## Supplementary Information



**Figure S1.** In vitro stabilities of  $^{111}\text{In}$ -DOTA-CMS prepared by various conditions in normal saline (NS) or fetal bovine serum (FBS).



**Figure S2.** T2-weighted MR imaging of rats treated with normal saline (n=3). Yellow arrows represent tumor lesions.



**Figure S3.** T2-weighted MR imaging of rats treated with  $^{177}\text{Lu}$ -DTPA-CMS (n=3). Yellow arrows represent tumor lesions.