

Figure S1 – Adhesion test (samples № 5, 6 and 10 had cohesive failure, while others had mixed nature of bond destruction).

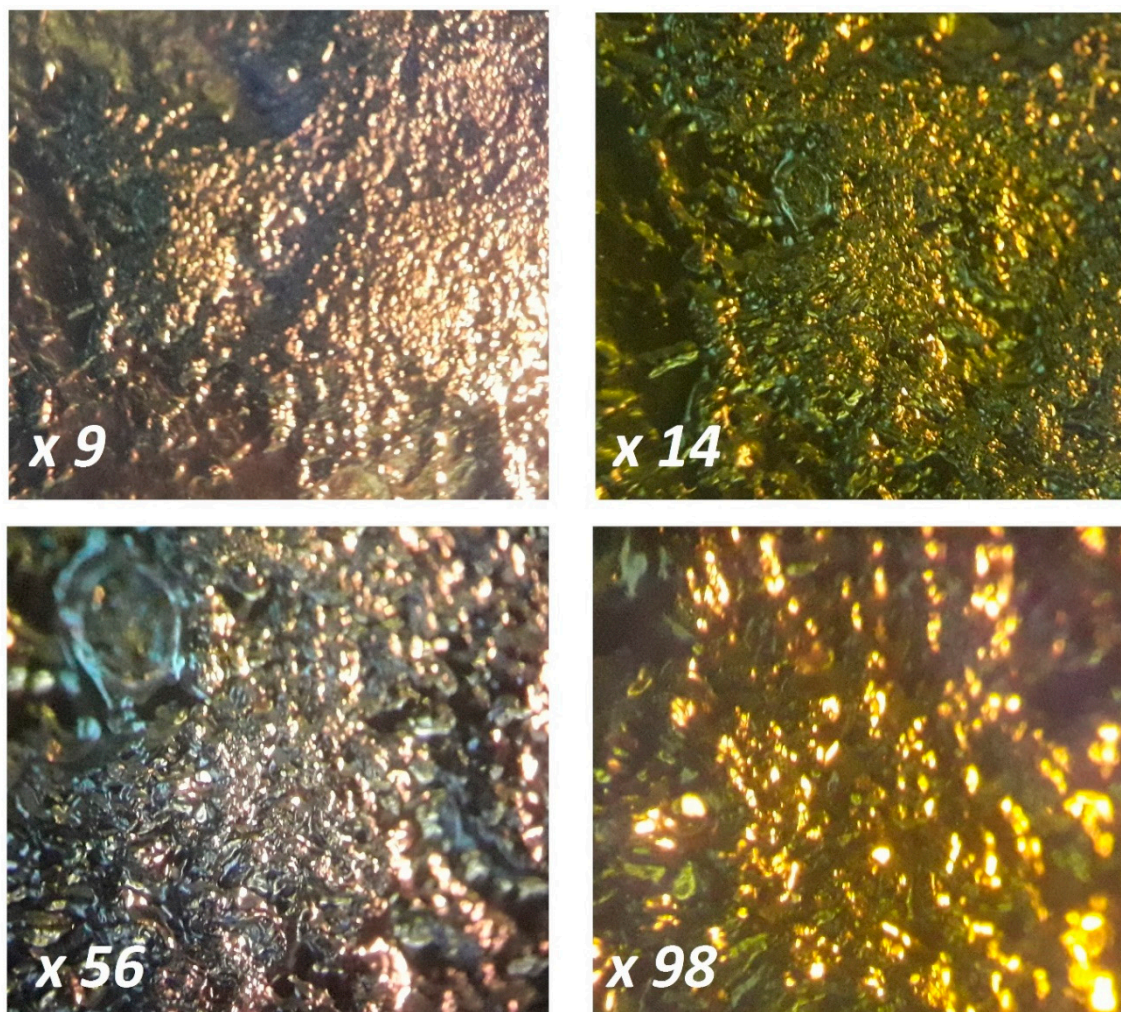


Figure S2 – Microphotos of HP-Fe surface.

Sample: HP-Fe

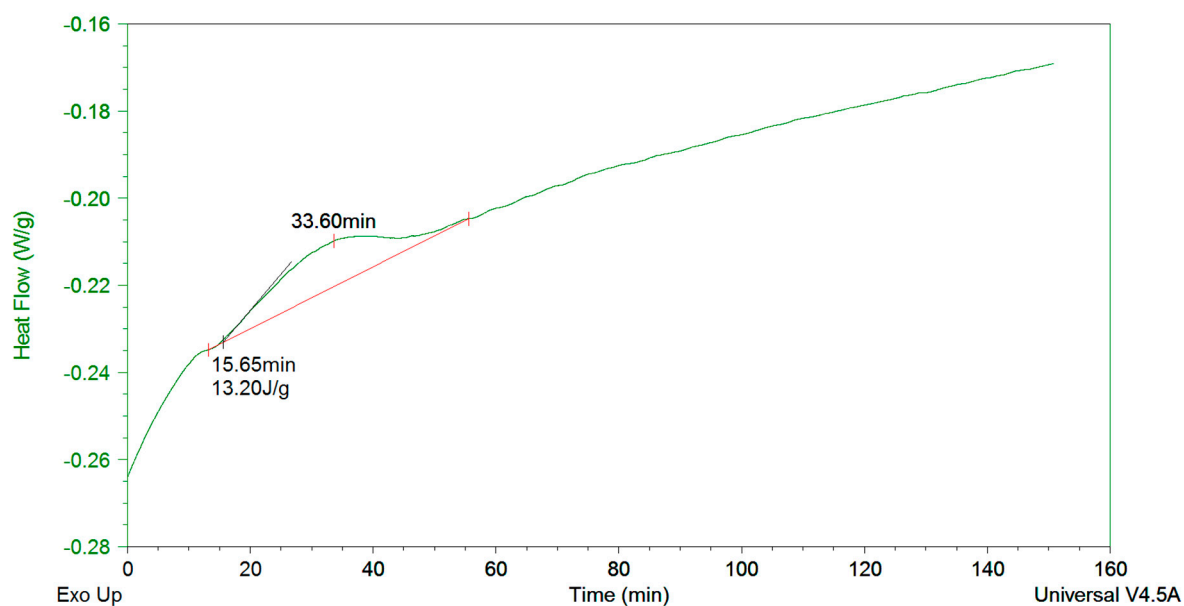


Figure S3 – DSC thermogram of HP-Fe gelation.

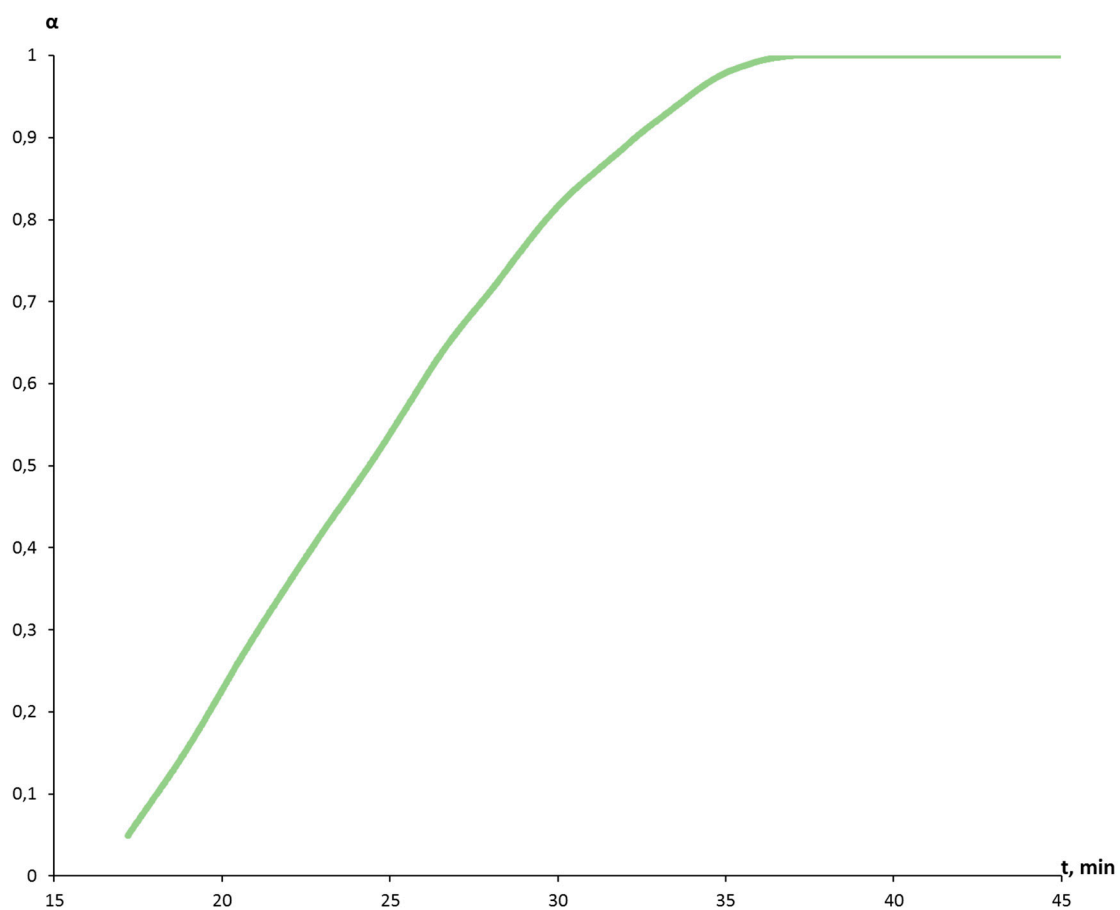


Figure S4 – Conversion degree of gelation.

$$\alpha = \Delta H / \Delta H_t \text{ (S.1)}$$

where ΔH – enthalpy change at certain time, J/g, ΔH_t – total enthalpy of a gelation, J/g.