

## Supplementary material

### Modulating the viscoelastic properties of covalently crosslinked protein hydrogels

Boni and Regan

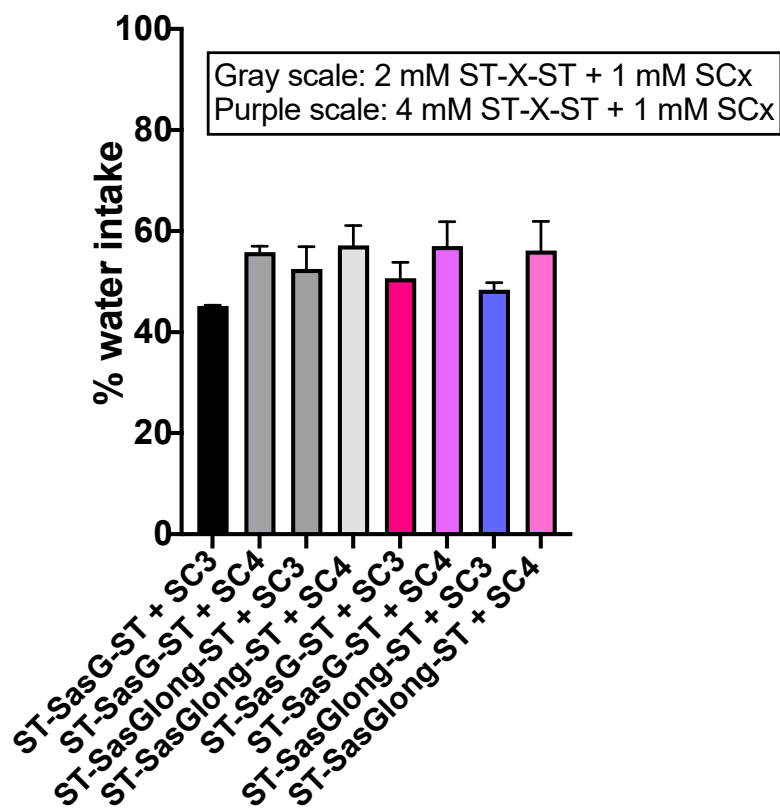
Contents:

Supplementary figures:

- Supplementary figure S1: swelling properties of the protein hydrogels.
- Supplementary figure S2: SasGlong and SC3
- Supplementary figure S3: SasG and SC4
- Supplementary figure S4: SasGlong and SC4
- Supplementary figure S5: Frequency sweep of ST-SasG-ST:SC3 at progressively increasing total protein concentrations, with ST:SC = 1.
- Supplementary figure S6: Frequency sweep of ST-SasGlong-ST:SC3 at progressively increasing total protein concentrations, with ST:SC = 1.
- Supplementary figure S7: Frequency sweep of ST-SasG-ST:SC4 at progressively increasing total protein concentrations, with ST:SC = 1.
- Supplementary figure S8: Frequency sweep of ST-SasGlong-ST:SC4 at progressively increasing total protein concentrations, with ST:SC = 1.
- Microrheology methods
- Supplementary Figure S9. Gelation kinetics of ST-SasG-ST and SC3 1.3:1 and 2.6:1.
- Supplementary Figure S10. Gelation kinetics of ST-SasGlong-ST and SC3 1.3:1 and 2:1.

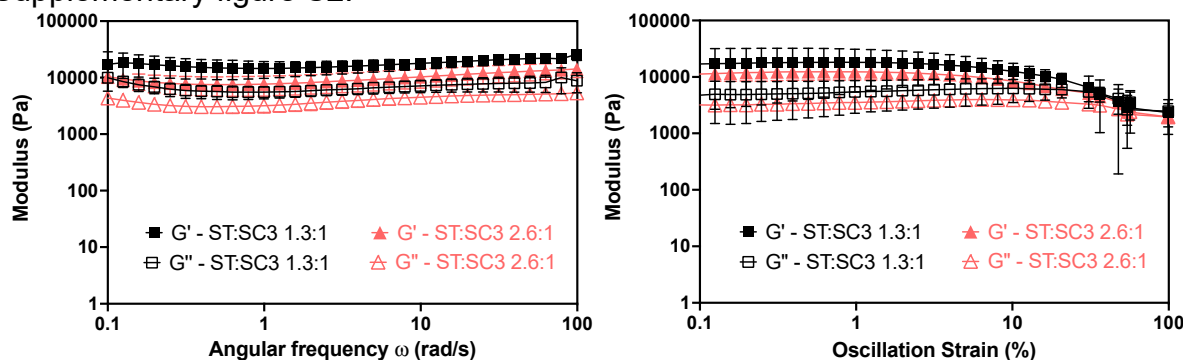
1. Plasmids used in this study: DNA and protein sequences
2. Strains used in this study
3. Raw data provided as a separate excel file.

Supplementary Figure S1.



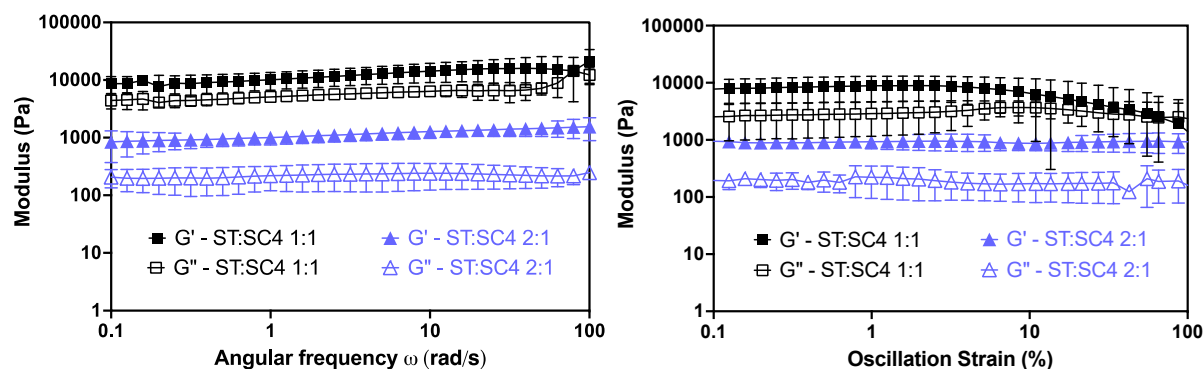
**Supplementary figure S1:** Swelling properties of the protein hydrogels at different ST:SC ratios.

Supplementary figure S2.



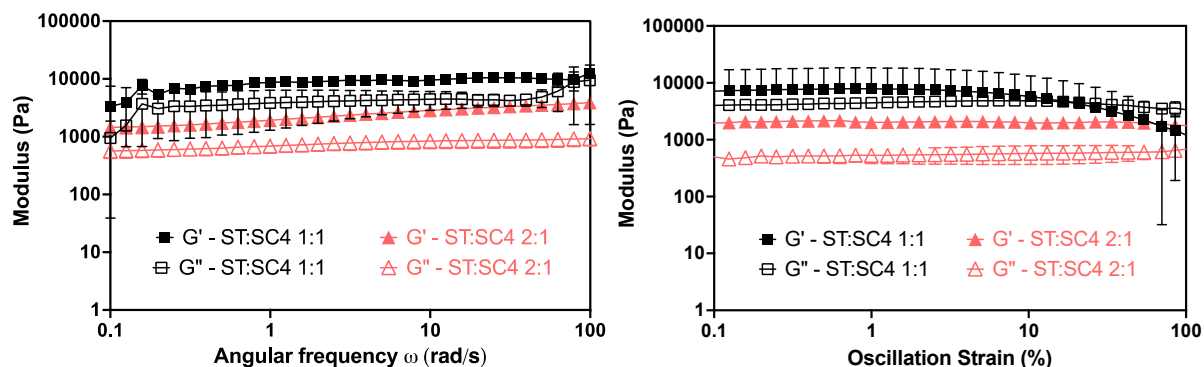
**Supplementary Figure S2:** Black: ST-SasGlong-ST:SC3 1.3:1; salmon: ST-SasGlong-ST:SC3 2.6:1. Combinations of ST-SasGlong-ST and SC3 exhibited classic gel like behaviour, with  $G' > G''$  and  $G' = 10,000$ , as expected from a hydrogel with critical yield stress at ~10% strain ( $G' < G''$ ).

Supplementary figure S3.



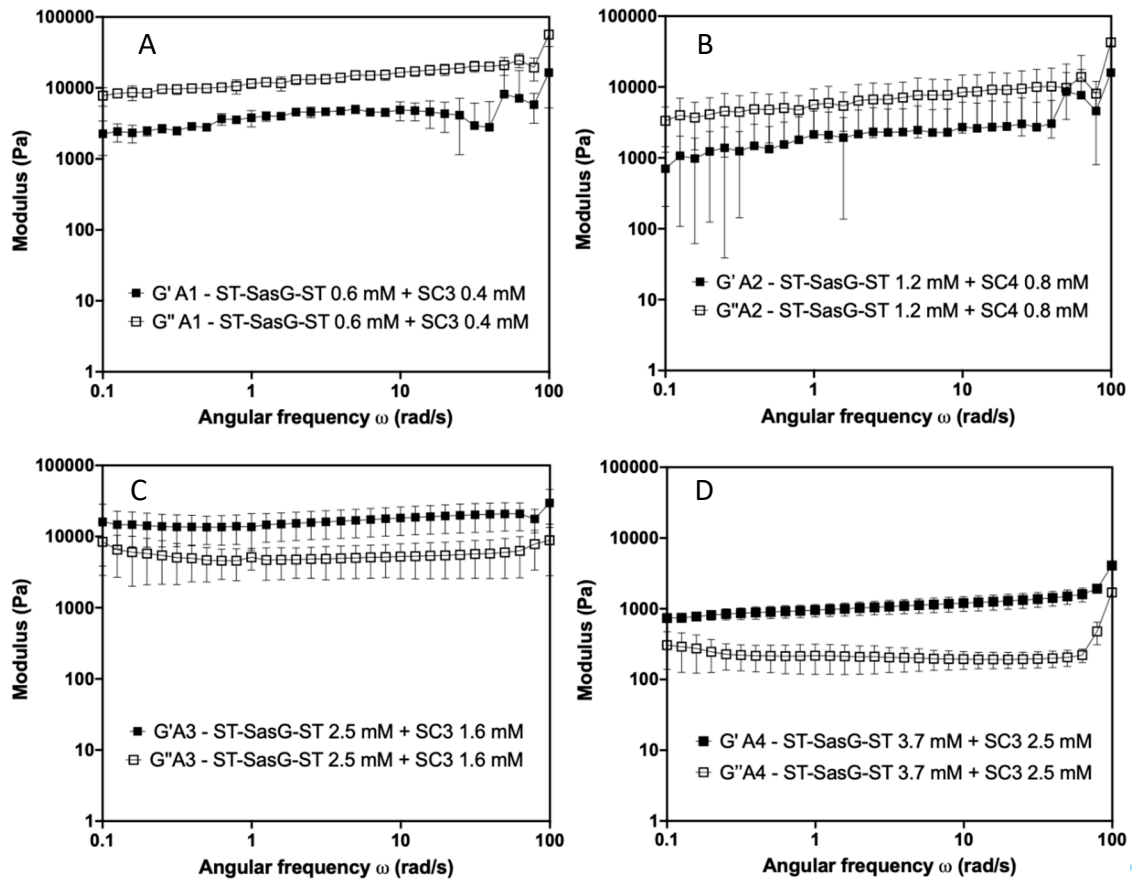
**Supplementary figure S3.** Black: ST-SasG-ST:SC4 1:1 exhibited classic gel like behaviour, with  $G' > G''$  and  $G' = 10,000$ , as expected from a hydrogel, and critical yield stress at 10% strain ( $G' < G''$ ). Purple: ST-SasG-ST:SC4 2:1 showed a 10-fold reduction in  $G'$  to 1,000 Pa, and a greater resistance to deformation, up to 100% strain.

Supplementary figure S4.



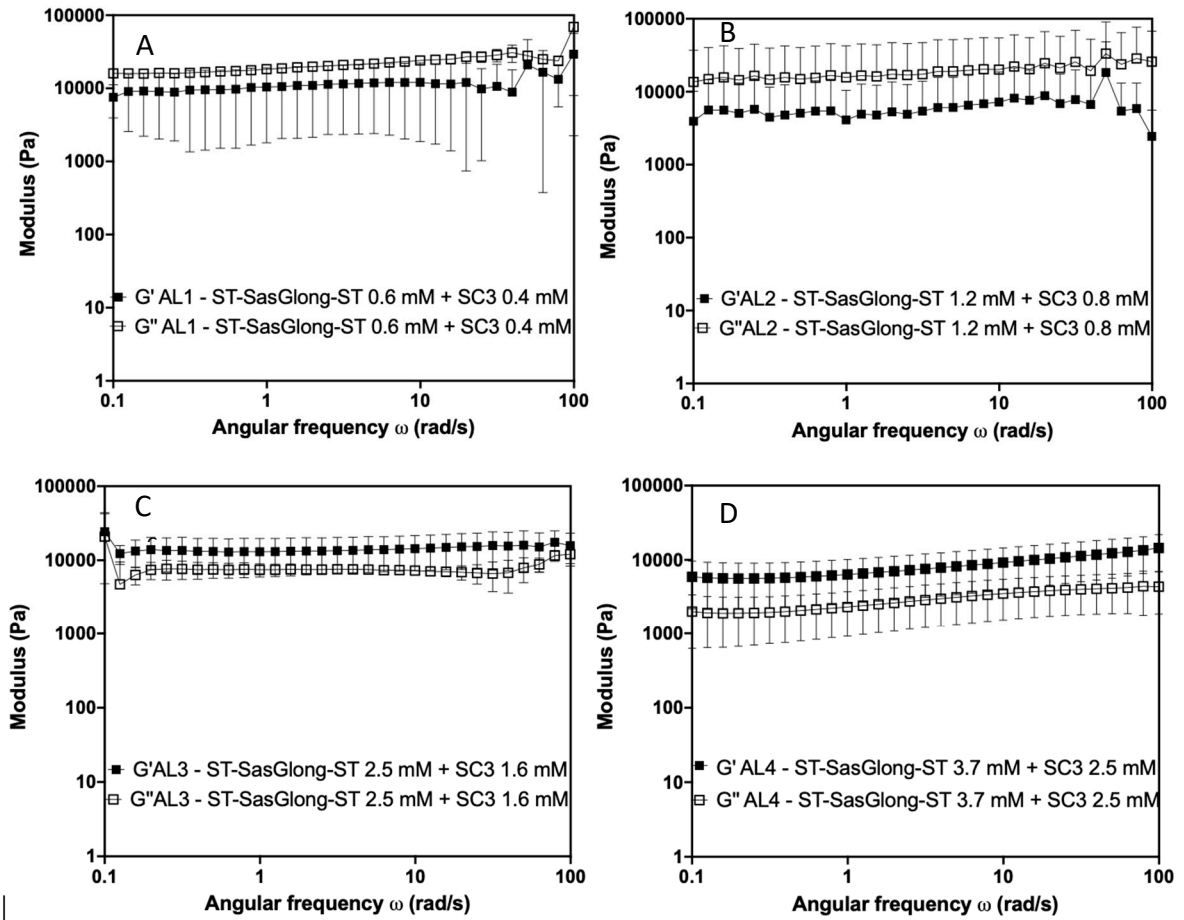
**Supplementary figure S4.** Black: ST-SasGlong-ST:SC4 1:1 exhibited classic gel like behaviour, with  $G' > G''$  and  $G' = 10,000$ , as expected from a hydrogel, and critical yield stress at 10% strain ( $G' < G''$ ). Salmon: ST-SasGlong-ST:SC4 2:1 showed a 10-fold reduction in  $G'$  to 1,000 Pa, and a greater resistance to deformation, up to 100% strain.

Supplementary figure S5.



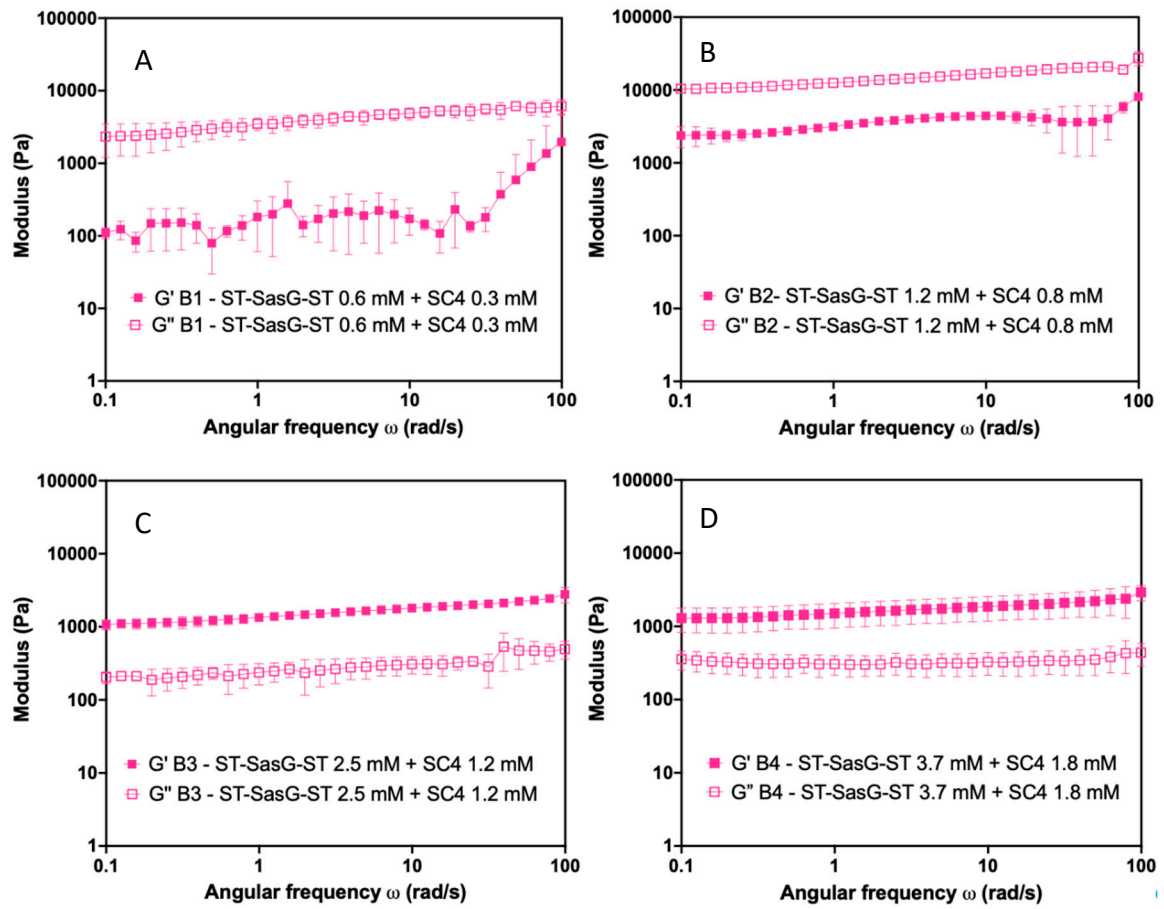
**Supplementary figure S5.** Frequency sweeps of ST-SasG-ST:SC3 at progressively increasing total protein concentrations with ST:SC = 1. A) ST:SC = 0.6:0.4 mM,  $G' < G''$ , indicative of viscous liquid. B) ST:SC = 1.2:0.8 mM,  $G' < G''$  indicative of viscous liquid. C) ST:SC = 2.5:1.6 mM,  $G' > G''$  and  $G' = 10,000$  Pa, indicative gel like behaviour. D) ST:SC = 3.7:2.5 mM,  $G' > G''$  and  $G' = 1,000$  Pa, indicative of gel like behaviour.

Supplementary figure S6.



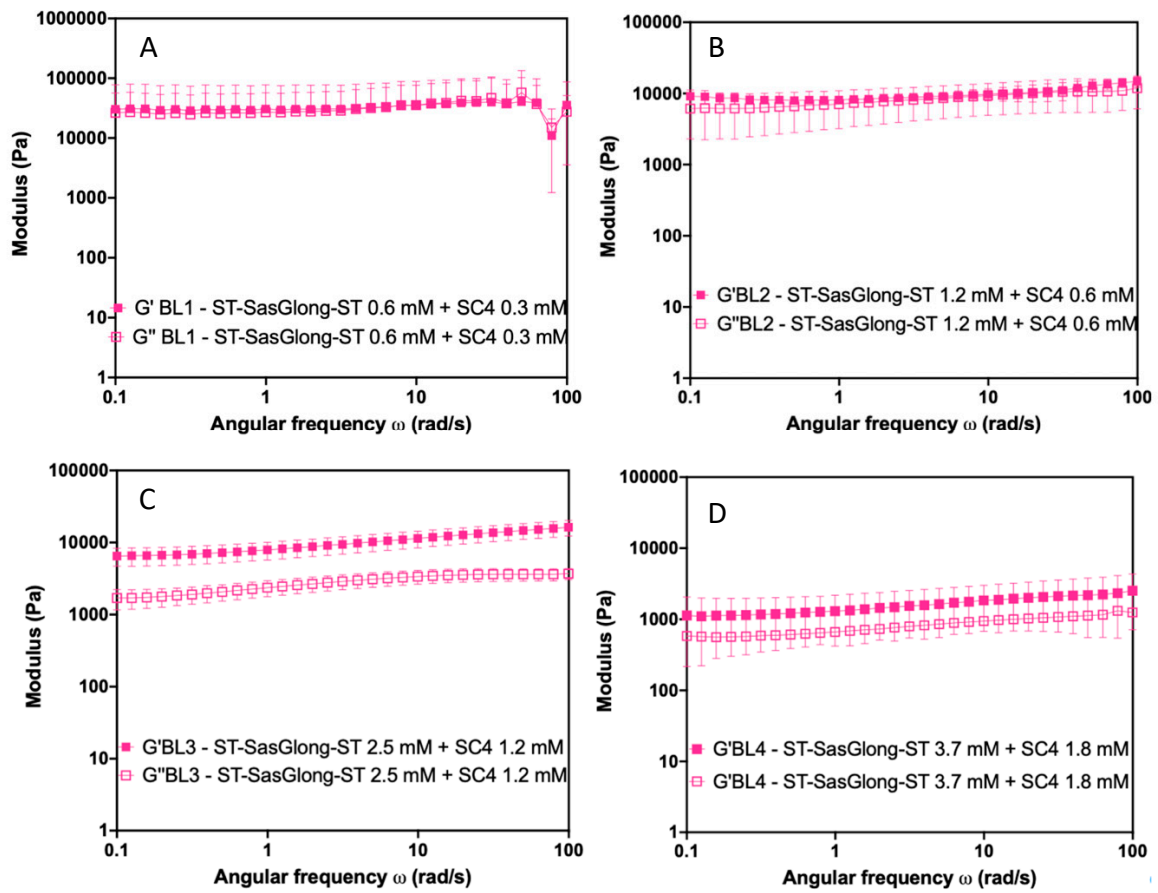
**Supplementary figure S6.** Frequency sweeps of ST-SasGlong-ST:SC3 at progressively increasing total protein concentrations with ST:SC = 1. A) ST:SC = 0.6:0.4 mM,  $G' < G''$ , indicative of viscous liquid. B) ST:SC = 1.2:0.8 mM,  $G' < G''$  indicative of viscous liquid. C) ST:SC = 2.5:1.6 mM,  $G' > G''$  and  $G' = 10,000$  Pa, indicative gel like behaviour. D) ST:SC = 3.7:2.5 mM,  $G' > G''$  and  $G' = 1,000$  Pa, indicative of gel like behaviour.

Supplementary figure S7.



**Supplementary figure S7.** Frequency sweeps of ST-SasG-ST:SC4 at progressively increasing total protein concentrations with ST:SC = 1. A) ST:SC = 0.6:0.3 mM,  $G' < G''$ , indicative of viscous liquid. B) ST:SC = 1.2:0.8 mM,  $G' < G''$  indicative of viscous liquid. C) ST:SC = 2.5:1.2 mM,  $G' > G''$  and  $G' = 10,000$  Pa, indicative gel like behaviour. D) ST:SC = 3.7:1.8 mM,  $G' > G''$  and  $G' = 1,000$  Pa, indicative of gel like behaviour.

Supplementary figure S8.

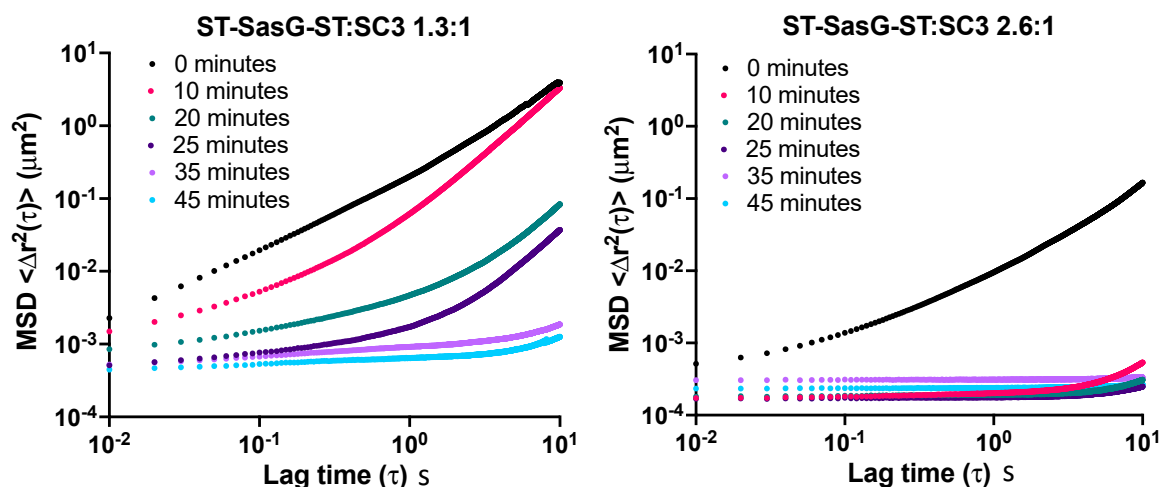


**Supplementary figure S8.** Frequency sweeps of ST-SasGlong-ST:SC4 at progressively increasing total protein concentrations with ST:SC = 1. A) ST:SC = 0.6:0.3 mM,  $G' < G''$ , indicative of viscous liquid. B) ST:SC = 1.2:0.8 mM,  $G' < G''$  indicative of viscous liquid. C) ST:SC = 2.5:1.2 mM,  $G' > G''$  and  $G' = 10,000$  Pa, indicative gel like behaviour. D) ST:SC = 3.7:1.8 mM,  $G' > G''$  and  $G' = 1,000$  Pa, indicative of gel like behaviour.

## Microrheology methods

Data collection started immediately after spontaneous gelation was initiated. The embedded tracer particles were imaged in brightfield at a magnification of 60x using a Nikon Eclipse Ti inverted microscope (numerical aperture 0.7, 60 x air immersion Extra Long Working Distance objective, Nikon, Japan). The Extra Long Working Distance objective allowed for imaging *in vitro* through the coverslip without introduction of aberrations and subsequent deterioration of the image quality. The movement of roughly 50 in-frame particles was recorded for a total of 6000 frames per minute (100 frames per second, fps) using a CMOS high speed camera (ORCA – Flash 4.0 V3, Hamamatsu) and the Micromanager V1.4.19 software<sup>1</sup>. Static errors in determining particle centroid due to intrinsic variations in the experimental set up were minimised by spreading the tracer beads over a sufficient number of pixels to represent the particle's brightness distribution reasonably<sup>2</sup>. This was achieved by keeping the illumination levels near the maximum allowed by detector saturation. Dynamic errors due to mismatches between the movement of the particles and image acquisition speed were minimised by selecting a short exposure time ( $\sigma = 1000 \mu\text{s}$ )<sup>3</sup>. The samples were imaged in real time for a minimum of 45 minutes and a maximum of 110 minutes. Particle tracking was performed using a Python script based on the weighted centroid method developed by Crocker and Grier<sup>4</sup> and the ensemble-averaged mean square displacement  $\langle \Delta r^2(\tau) \rangle$  was calculated.

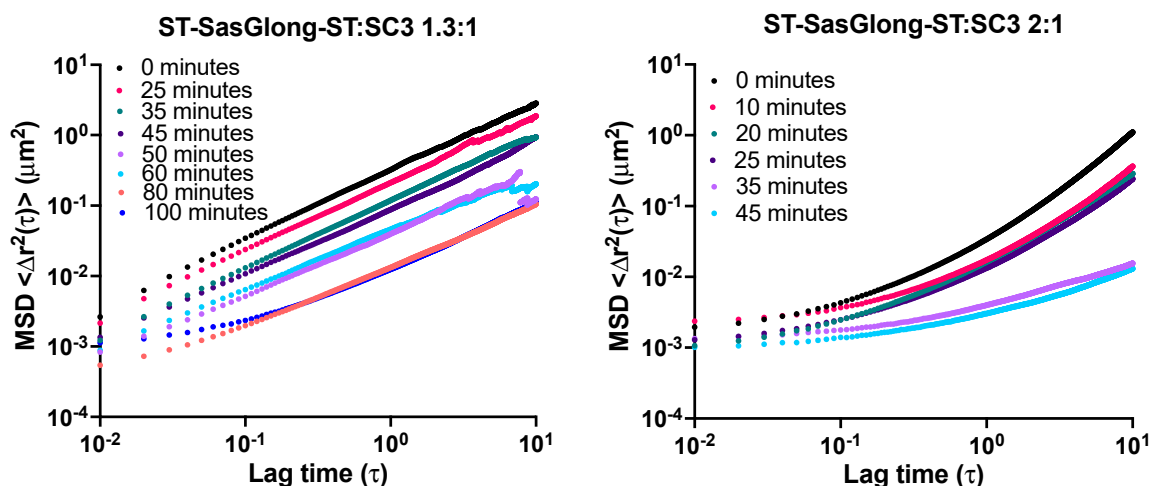
Supplementary Figure S9.



**Supplementary Figure S9.** Gelation kinetics of ST-SasG-ST and SC3 1.3:1 and 2.6:1. Immediately after mixing of ST and SC,  $t = 0$ , both networks showed liquid-like behaviour and free diffusion of the microparticles in the system ( $\langle \Delta r^2(\tau) \rangle \approx \tau$ ). As the time post mixing increased, the behaviour of both systems changed. The ST:SC 1.2:1 showed a progressive decrease in MSD and dependence on lag time until the system reached a plateau  $\alpha = 0$ , indicative of full gelation at  $\sim 45$  minutes. The ST:SC 2.6:1 system showed a fast decline of MSD, that approached a constant value  $\alpha = 0$  as early as 10 minutes.



Supplementary figure S10.



**Supplementary figure S10.** Gelation kinetics of ST-SasGlong-ST and SC3 1.3:1 and 2:1. Immediately after mixing of ST and SC,  $t = 0$ , both networks showed liquid-like behaviour and free diffusion of the microparticles in the system ( $\langle \Delta r^2(\tau) \rangle \approx \tau$ ). As the time post mixing increased, the behaviour of both systems changed. The ST:SC 1.3:1 showed a small decrease in MSD and dependence on lag time. The system never reached the plateau  $\alpha = 0$ , indicative of the presence of a viscous component in the hydrogel. The ST:SC 2:1 system showed a faster decline of MSD, but similarly never reached the constant value  $\alpha = 0$ .

Table S1. Molar concentration of SC3 and SC4 in combination with the ST crosslinkers SasG or SasGlong.

SC3 [mM]	SC4 [mM]	ST-crosslinker-ST [mM]
0.4	-	0.6
0.8	-	1.2
1.6	-	2.5
2.5	-	3.7
-	0.3	0.6
-	0.6	1.2
-	1.2	2.5
-	1.8	3.7

### 1. Plasmids used in this study

Each plasmid is detailed in the following pages, with both DNA coding sequence and protein amino acid sequence annotated with colour for clarity. All proteins are expressed via the pTrc promoter. Plasmids are used to express the following proteins:

1. SpyTag-SasG-SpyTag
2. SpyTag-SasGlong-SpyTag
3. SpyCatcher – GSx3 array
4. SpyCatcher – GSx4 array

#### SpyTag-SasG-SpyTag

<b>Name</b>	ST-SasG-ST	<b>Source</b>	5
<b>Resistance</b>	Ampicillin	<b>Total plasmid size (bp)</b>	5403
<b>Parent Vector</b>	pPROEX HTa	<b>Seq Primers</b>	M13_pUC +pBAD
<b>Benchling link</b>	<a href="https://benchling.com/s/seq-eyHiB1hKBXfQfuZJAppg?m=slm-pDPyP77iqjd4gYqZlcsj">https://benchling.com/s/seq-eyHiB1hKBXfQfuZJAppg?m=slm-pDPyP77iqjd4gYqZlcsj</a>		

#### Description

SasG protein flanked by one SpyTag at the N and C termini. Cleavable N terminal His tag.

Shading Key

His-TEV-ST-SasG-ST

#### DNA

ATGTCGTACTACCATCACCATCACCATCACGATTACGATATCCCAACGACCGAA  
AACCTGTATTTTCAGGGCGCCATGGGATCCGCGCATATTGTAATGGTGGATGCT  
TACAAACCCACGAAAACATATGGCACCAGAAACCATCACCGAACTGGAAAAGAAG  
GTGGAAGAAATCCCGTTCAAGAAAGAACGCAAATTCAACCCGGACCTGGCACC  
GGGTACCGAAAAAGTGACGCGTGAAGGCCAGAAAGGTGAAAAAACCATTACCA  
CGCCGACGCTGAAAAACCCGCTGACCGGCGTTATTATCAGCAAAGGTGAACCG  
AAAGAAGAAATTACCAAAGATCCGATCAATGAACTGACCGAATATGGCCCGGAA  
ACGATTGCGCCGGGTCATCGTGATGAATTTGACCCGAAACTGCCGACCGGCGA  
AAAAGAAGAAGTGCCGGGCAAACCGGGTATCAAAAATCCGGAAACCGGCGATG  
TGGTTCGCCCGCCGGTTCGACAGTGTGACGAAATACGGCCCGGTTAAGGGTGAT  
TCCATTGTGCAAAAAGAAGAAATCCCGTTTGAAAAAGAACGTAAATTTAATCCGG  
ACCTGGCGCCGGGTACCGAAAAAGTTACGCGCGAAGGCCAAAAAGGTGAAAAA  
ACCATCACGACGCCGACCCTGAAAAATCCGCTGACCGGCGAAATTATCAGCAA  
GGGTGAATCTAAAGAAGAAATCACGAAAGACCCGATCAACGAACTGACCGAATA  
CGGCCCGGAAACCATTGCCCCCGGGGCGCGCATATTGTAATGGTGGATGCTTACA  
AACCCACGAAATGA

#### Expression Product Sequence

MSYYHHHHHHDYDIPTTENLYFQAMGSAHIVMVDAYKPTKHMAPKTITELEKKVE  
EIPFKKERKFNPDLAPGTEKVTREGQKGEKTITPTLNPLTGVIISKGEPEKEITKDP  
INELTEYGPETIAPGHRDEFDPKLPTGEKEEVPKPGIKNPETGDVVRPPVDSVTKY  
GPVKGDSIVEKEEIPFEKERKFNPDLAPGTEKVTREGQKGEKTITPTLNPLTGEII  
SKGESKEEITKDPINELTEYGPETIAPGAHIVMVDAYKPTK\*

## SpyTag-SasGlong-SpyTag

<b>Name</b>	ST-SasGlong-ST	<b>Source</b>	5
<b>Resistance</b>	Ampicillin	<b>Total plasmid size (bp)</b>	6939
<b>Parent Vector</b>	pPROEX HTa	<b>Seq Primers</b>	M13_pUC +pBAD
<b>Benchling link</b>	<a href="https://benchling.com/s/seq-S4rvBMTg4MwD94VIV7tx?m=slm-zfk0j2Ogdyo5kKHvMHT">https://benchling.com/s/seq-S4rvBMTg4MwD94VIV7tx?m=slm-zfk0j2Ogdyo5kKHvMHT</a>		

### Description

SasGlong protein (GEG+3x(EG)) flanked by one SpyTag at the N and C termini.  
Cleavable N terminal His tag.

### Shading Key

His-TEV-ST-SasGlong-ST

### DNA

ATGTCGTA CTACCATCACCATCACCATCACGATTACGATATCCCAACGACCGAA  
AACCTGTATTTCAGGGCGCCATGGGATCCGCGCATATTGTAATGGTGGATGCT  
TACAAACCCACGAAACATATGGCACCAGAAACCATCACCGAACTGGAAAAGAAG  
GTGGAAGAAATCCCGTTCAAGAAAGAACGCAAATTCAACCCGGACCTGGCACC  
GGGTACCGAAAAAGTGACGCGTGAAGGCCAGAAAGGTGAAAAAACCATACCA  
CGCCGACGCTGAAAAACCCGCTGACCGGCGTTATTATCAGCAAAGGTGAACCG  
AAAGAAGAAATTACCAAAGATCCGATCAATGAACTGACCGAATATGGCCCGGAA  
ACGATTGCGCCGGGTCATCGTGATGAATTTGACCCGAAACTGCCGACCGGCGA  
AAAAGAAGAAGTGCCGGGCAAACCGGGTATCAAAAATCCGGAAACCGGCGATG  
TGGTTCGCCCGCCGGTTCGACAGTGTGACGAAATACGGCCCGGTTAAGGGTGAT  
TCCATTGTGCAAAAAGAAGAAATCCCGTTTGAAAAAGAACGTAAATTTAATCCGG  
ACCTGGCGCCGGGTACCGAAAAAGTTACGCGCGAAGGCCAAAAAGGTGAAAA  
ACCATCACGACGCCGACCCTGAAAAATCCGCTGACCGGCGAAATTATCAGCAA  
GGGTGAATCTAAAGAAGAAATCACGAAAGACCCGATCAACGAACTGACCGAATA  
CGGCCCGGAAACCATTGCCCCCGGTTCATCGTGATGAATTTGACCCGAAACTGC  
CGACCGGCGAAAAAGAAGAAGTGCCGGGCAAACCGGGTATCAAAAATCCGGAA  
ACCGGCGATGTGGTTCGCCCGCCGGTTCGACAGTGTGACGAAATACGGCCCGG  
TTAAGGGTGATTCCATTGTGCAAAAAGAAGAAATCCCGTTTGAAAAAGAACGTA  
AATTTAATCCGGACCTGGCGCCGGGTACCGAAAAAGTTACGCGCGAAGGCCAA  
AAAGGTGAAAAAACCATCACGACGCCGACCCTGAAAAATCCGCTGACCGGCGA  
AATTATCAGCAAGGGTGAATCTAAAGAAGAAATCACGAAAGACCCGATCAACGA  
ACTGACCGAATACGGCCCGGAAACCATTGCCCCCGGTTCATCGTGATGAATTTG  
ACCCGAAACTGCCGACCGGCGAAAAAGAAGAAGTGCCGGGCAAACCGGGTAT  
CAAAAATCCGGAAACCGGCGATGTGGTTCGCCCGCCGGTTCGACAGTGTGACG  
AAATACGGCCCGGTTAAGGGTGATTCCATTGTGCAAAAAGAAGAAATCCCGTTT  
GAAAAAGAACGTAAATTTAATCCGGACCTGGCGCCGGGTACCGAAAAAGTTAC  
GCGCGAAGGCCAAAAAGGTGAAAAAACCATCACGACGCCGACCCTGAAAAATC  
CGCTGACCGGCGAAATTATCAGCAAGGGTGAATCTAAAGAAGAAATCACGAAA  
GACCCGATCAACGAACTGACCGAATACGGCCCGGAAACCATTGCCCCCGGTCA  
TCGTGATGAATTTGACCCGAAACTGCCGACCGGCGAAAAAGAAGAAGTGCCGG  
GCAAACCGGGTATCAAAAATCCGGAAACCGGCGATGTGGTTCGCCCGCCGGTTC  
GACAGTGTGACGAAATACGGCCCGGTTAAGGGTGATTCCATTGTGCAAAAAGA  
AGAAATCCCGTTTGAAAAAGAACGTAAATTTAATCCGGACCTGGCGCCGGGTAC

CGAAAAAGTTACGCGCGAAGGCCAAAAAGGTGAAAAAACCATCACGACGCCGA  
 CCCTGAAAAATCCGCTGACCGGCGAAATTATCAGCAAGGGTGAATCTAAAGAA  
 GAAATCACGAAAGACCCGATCAACGAACTGACCGAATACGGCCCGGAAACCAT  
 TGCCCCCGGTTCATCGTGATGAATTTGACCCGAAACTGCCGACCGGCGAAAAAG  
 AAGAAGTGCCGGGCAAACCGGGTATCAAAAATCCGGAAACCGGCGATGTGGTT  
 CGCCCGCCGGTCGACAGTGTGACGAAATACGGCCCGGTAAAGGGTGATTCCAT  
 TGTCGAAAAAGAAGAAATCCCGTTTGAAAAAGAACGTAAATTTAATCCGGACCT  
 GGCGCCGGGTACCGAAAAAGTTACGCGCGAAGGCCAAAAAGGTGAAAAACCA  
 TCACGACGCCGACCCTGAAAAATCCGCTGACCGGCGAAATTATCAGCAAGGGT  
 GAATCTAAAGAAGAAATCACGAAAGACCCGATCAACGAACTGACCGAATACGG  
 CCCGGAACCATTGCCCCCGGGGCGCATATTGTAATGGTGGATGCTTACAAAC  
 CCACGAAATGATAA

### Expression product sequence:

MSYYHHHHHHDYDIPTTENLYFQGGAMGSAHIVMVDAYKPTKHMAPKTITELEKKVE  
 EIPFKKERKFNPDLAPGTEKVTREGQKGEKTITPTLKNPLTGVIISKGEPEKEEITKDP  
 INELTEYGPETIAPGHRDEFDPKLPTGEKEEVPKGPGIKNPETGDVVRPPVDSVTKY  
 GPKVKGDSIVEKEEIPFEKERKFNPDLAPGTEKVTREGQKGEKTITPTLKNPLTGEII  
 SKGESKEEITKDPINELTEYGPETIAPGHRDEFDPKLPTGEKEEVPKGPGIKNPETG  
 DVVRPPVDSVTKYGPKVKGDSIVEKEEIPFEKERKFNPDLAPGTEKVTREGQKGEKTI  
 TTPTLKNPLTGEIISKGESKEEITKDPINELTEYGPETIAPGHRDEFDPKLPTGEKEEV  
 PGKPGIKNPETGDVVRPPVDSVTKYGPKVKGDSIVEKEEIPFEKERKFNPDLAPGTEK  
 VTREGQKGEKTITPTLKNPLTGEIISKGESKEEITKDPINELTEYGPETIAPGHRDEF  
 DPKLPTGEKEEVPKGPGIKNPETGDVVRPPVDSVTKYGPKVKGDSIVEKEEIPFEKER  
 KFNPDLAPGTEKVTREGQKGEKTITPTLKNPLTGEIISKGESKEEITKDPINELTEYG  
 PETIAPGHRDEFDPKLPTGEKEEVPKGPGIKNPETGDVVRPPVDSVTKYGPKVKGDS  
 IVEKEEIPFEKERKFNPDLAPGTEKVTREGQKGEKTITPTLKNPLTGEIISKGESKEE  
 ITKDPINELTEYGPETIAPGAHIVMVDAYKPTK\*\*

### SpyCatcher 3

<b>Name</b>	SpyCatcher GSx3 array	<b>Source</b>	<sup>5</sup>
<b>Resistance</b>	Ampicillin	<b>Total plasmid size (bp)</b>	5760
<b>Parent Vector</b>	pPROEX HTa	<b>Seq Primers</b>	M13_pUC +pBAD
<b>Benchling link</b>	<a href="https://benchling.com/s/seq-SqSqFQytCEdys80vaAYI?m=slm-0J7C0uJyMB3WBRx5ZwUq">https://benchling.com/s/seq-SqSqFQytCEdys80vaAYI?m=slm-0J7C0uJyMB3WBRx5ZwUq</a>		

### Description

Three SpyCatcher units linked by GS flexible linker. Cleavable N terminal His tag.

### Shading Key

His-TEV-SpyCatcher-GS linker-SpyCatcher-GS linker-SpyCatcher

## DNA

ATGTCGTA CTACCATCACCATCACGATTACGATATCCCAACGACCGAA  
AACCTGTATTTTCAGGGCGCCATGGGATCCGCCATGGTTGATACCTTATCAGGT  
TTATCAAGTGAGCAAGGTCAGTCCGGTGATATGACAATTGAAGAAGATAGTGCT  
ACCCATATTAAATTCTCAAAACGTGATGAGGACGGCAAAGAGTTAGCTGGTGCA  
ACTATGGAGTTGCGTGATTCATCTGGTAAAACTATTAGTACATGGATTTCAGATG  
GACAAGTGAAAGATTTCTACCTGTATCCAGGAAAATATACATTTGTCGAAACCG  
CAGCACCAGACGGTTATGAGGTAGCAACTGCTATTACCTTTACAGTTAATGAGC  
AAGGTCAGGTTACTGTAAATGGCAAAGCAACTAAAGGTGACGCTCATATTGGCG  
GCTCCGGTGGTAGCAGATCCGCCATGGTTGATACCTTATCAGGTTTATCAAGTG  
AGCAAGGTCAGTCCGGTGATATGACAATTGAAGAAGATAGTGCTACCCATATTA  
AATTCTCAAAACGTGATGAGGACGGCAAAGAGTTAGCTGGTGCAACTATGGAGT  
TGCGTGATTCATCTGGTAAAACTATTAGTACATGGATTTCAGATGGACAAGTGAA  
AGATTTCTACCTGTATCCAGGAAAATATACATTTGTCGAAACCGCAGCACCAGA  
CGGTTATGAGGTAGCAACTGCTATTACCTTTACAGTTAATGAGCAAGGTCAGGT  
TACTGTAAATGGCAAAGCAACTAAAGGTGACGCTCATATTGGCGGCTCCGGTG  
GTAGCAGATCTGCCATGGTTGATACCTTATCAGGTTTATCAAGTGAGCAAGGTC  
AGTCCGGTGATATGACAATTGAAGAAGATAGTGCTACCCATATTAAATTCTCAA  
ACGTGATGAGGACGGCAAAGAGTTAGCTGGTGCAACTATGGAGTTGCGTGATT  
CATCTGGTAAAACTATTAGTACATGGATTTTCAGATGGACAAGTGAAAGATTTCTA  
CCTGTATCCAGGAAAATATACATTTGTCGAAACCGCAGCACCAGACGGTTATGA  
GGTAGCAACTGCTATTACCTTTACAGTTAATGAGCAAGGTCAGGTTACTGTAAAT  
GGCAAAGCAACTAAAGGTGACGCTCATATTAGATCTTAG

## Expression Product Sequence

MSYYHHHHHDYDIPTTENLYFQGMGSAAMVDTL SGLSSEQGQSGDMTIEEDSAT  
HIKFSKRDEDGKELAGATMELRDSSGKTISTWISDGQVKDFYLYPGKYTFVETAAP  
DGYEVATAITFTVNEQGQVTVNGKATKGDAHIGSGGSRSAAMVDTL SGLSSEQGQ  
SGDMTIEEDSATHIKFSKRDEDGKELAGATMELRDSSGKTISTWISDGQVKDFYLYP  
GKYTFVETAAPDGYEVATAITFTVNEQGQVTVNGKATKGDAHIGSGGSRSAAMVD  
TL SGLSSEQGQSGDMTIEEDSATHIKFSKRDEDGKELAGATMELRDSSGKTISTWIS  
DGQVKDFYLYPGKYTFVETAAPDGYEVATAITFTVNEQGQVTVNGKATKGDAHRS  
\*

## SpyCatcher 4

<b>Name</b>	SpyCatcher GSx4 array	<b>Source</b>	5
<b>Resistance</b>	Ampicillin	<b>Total plasmid size (bp)</b>	6129
<b>Parent Vector</b>	pPROEX HTa	<b>Seq Primers</b>	M13_pUC +pBAD
<b>Benchling link</b>	<a href="https://benchling.com/s/seq-R6ZITqWrQ8LEwOXN7isx?m=slm-18jeUcdgKHXBq1rpsEs">https://benchling.com/s/seq-R6ZITqWrQ8LEwOXN7isx?m=slm-18jeUcdgKHXBq1rpsEs</a>		

## Description

Four SpyCatcher units linked by GS flexible linker. Cleavable N terminal His tag.

## Shading Key

His-TEV-SpyCatcher-GS-linker-SpyCatcher-GS-linker-SpyCatcher-GS-linker-SpyCatcher

## DNA

ATGTCGTA CTACCATCACCATCACCATCACGATTACGATATCCCAACGACCGAA  
AACCTGTATTTTCAGGGCGCCATGGGATCCGCCATGGTTGATACCTTATCAGGT  
TTATCAAGTGAGCAAGGTCAGTCCGGTGATATGACAATTGAAGAAGATAGTGCT  
ACCCATATTAAATTCTCAAAACGTGATGAGGACGGCAAAGAGTTAGCTGGTGCA  
ACTATGGAGTTGCGTGATTCATCTGGTAAAACTATTAGTACATGGATTTTCAGATG  
GACAAGTGAAAGATTTCTACCTGTATCCAGGAAAATATACATTTGTGCGAAACCG  
CAGCACCAGACGGTTATGAGGTAGCAACTGCTATTACCTTTACAGTTAATGAGC  
AAGGTCAGGTTACTGTAAATGGCAAAGCAACTAAAGGTGACGCTCATATTGGCG  
GCTCCGGTGGTAGCAGATCCGCCATGGTTGATACCTTATCAGGTTTATCAAGTG  
AGCAAGGTCAGTCCGGTGATATGACAATTGAAGAAGATAGTGCTACCCATATTA  
AATTCTCAAAACGTGATGAGGACGGCAAAGAGTTAGCTGGTGCAACTATGGAGT  
TGCGTGATTCATCTGGTAAAACTATTAGTACATGGATTTTCAGATGGACAAGTGAA  
AGATTTCTACCTGTATCCAGGAAAATATACATTTGTGCGAAACCGCAGCACCAGA  
CGGTTATGAGGTAGCAACTGCTATTACCTTTACAGTTAATGAGCAAGGTCAGGT  
TACTGTAAATGGCAAAGCAACTAAAGGTGACGCTCATATTGGCGGCTCCGGTGC  
GTAGCAGATCTGCCATGGTTGATACCTTATCAGGTTTATCAAGTGAGCAAGGTC  
AGTCCGGTGATATGACAATTGAAGAAGATAGTGCTACCCATATTAAATTCTCAAA  
ACGTGATGAGGACGGCAAAGAGTTAGCTGGTGCAACTATGGAGTTGCGTGATT  
CATCTGGTAAAACTATTAGTACATGGATTTTCAGATGGACAAGTGAAAGATTTCTA  
CCTGTATCCAGGAAAATATACATTTGTGCGAAACCGCAGCACCAGACGGTTATGA  
GGTAGCAACTGCTATTACCTTTACAGTTAATGAGCAAGGTCAGGTTACTGTAAAT  
GGCAAAGCAACTAAAGGTGACGCTCATATTGGCGGCTCCGGTGGTAGCAGATC  
TGCCATGGTTGATACCTTATCAGGTTTATCAAGTGAGCAAGGTCAGTCCGGTGA  
TATGACAATTGAAGAAGATAGTGCTACCCATATTAAATTCTCAAAACGTGATGAG  
GACGGCAAAGAGTTAGCTGGTGCAACTATGGAGTTGCGTGATTCATCTGGTAA  
ACTATTAGTACATGGATTTTCAGATGGACAAGTGAAAGATTTCTACCTGTATCCAG  
GAAAATATACATTTGTGCGAAACCGCAGCACCAGACGGTTATGAGGTAGCAACTG  
CTATTACCTTTACAGTTAATGAGCAAGGTCAGGTTACTGTAAATGGCAAAGCAA  
CTAAAGGTGACGCTCATATTAGATCTTAG

## Expression Product Sequence

MSYYHHHHHHDYDIPTTENLYFQGMGSA MVDTL SGLSSEQGQSGDMTIEEDSAT  
HIKFSKRDEDGKELAGATMELRDSSGKTISTWISDGQVKDFYLYPGKYTFVETAAP  
DGYEVATAITFTVNEQGQVTVNGKATKGDAHIGSGGSRSAMVDTL SGLSSEQGQ  
SGDMTIEEDSATHIKFSKRDEDGKELAGATMELRDSSGKTISTWISDGQVKDFYLYP  
GKYTFVETAAPDGYEVATAITFTVNEQGQVTVNGKATKGDAHIGSGGSRSAMVD  
TL SGLSSEQGQSGDMTIEEDSATHIKFSKRDEDGKELAGATMELRDSSGKTISTWIS  
DGQVKDFYLYPGKYTFVETAAPDGYEVATAITFTVNEQGQVTVNGKATKGDAHIGG  
SGGSRSAMVDTL SGLSSEQGQSGDMTIEEDSATHIKFSKRDEDGKELAGATMELR  
DSSGKTISTWISDGQVKDFYLYPGKYTFVETAAPDGYEVATAITFTVNEQGQVTVN  
GKATKGDAHRS\*

### 3. Strains used in this study

Strains	Relevant Characteristics	Source
<i>E. coli</i>		
BL21 Gold(DE3)		Professor Lynne Regan's lab stock (University of Edinburgh)
<b>Plasmids</b>		
SpyTag-SasG-SpyTag	T7 promoter-operator, N-terminal His tag, Amp <sup>r</sup> , plasmid for expression of ST-SasG-ST	1
SpyTag-SasGlong-SpyTag	T7 promoter-operator, N-terminal His tag, Amp <sup>r</sup> , plasmid for expression of ST-SasGlong-ST	1
SpyCatcher – GS 3 Array	T7 promoter-operator, N-terminal His tag, Amp <sup>r</sup> , plasmid for expression of SC3	1
SpyCatcher – GS 4 Array	T7 promoter-operator, N-terminal His tag, Amp <sup>r</sup> , plasmid for expression of SC4	1

### References

1. A. Edelstein, Amodaj, N., Hoover, K., Vale, R., Stuurman, N., *Curr. Protoc. Mol. Biol.*, 2010, **92**, 14.20.11-14.20.17.
2. W. Mulyasasmita, Lee, J.S., Heilshorn, S.C., *Biomacromolecules*, 2011, **12**, 3406–3411.
3. T. Savin, Doyle, P.S., *Biophysical Journal*, 2005, **88**, 623-638.
4. J. C. Crocker, Grier, D.G., *J. Colloid Interface Sci.*, 1996, **179**, 298.
5. D. Williams, *Yale University* 2018.