

Figure S1. Bile salts hydrolase (Bsh) activity assay of *L. plantarum* BCC4352. The strain was grown overnight in MRS broth and streaked onto MRS agar (a), MRS agar supplemented with 0.5% (w/v) taurine conjugates of deoxycholic acid (TDCA) (b), or glycocholic acid conjugates of deoxycholic acid (GDCA) (c). The agar was also supplemented with 0.37 g of CaCl₂ per liter and incubated anaerobically for 48 h. The white precipitates around colonies and the clearing of the medium are indicative of BSH activity.

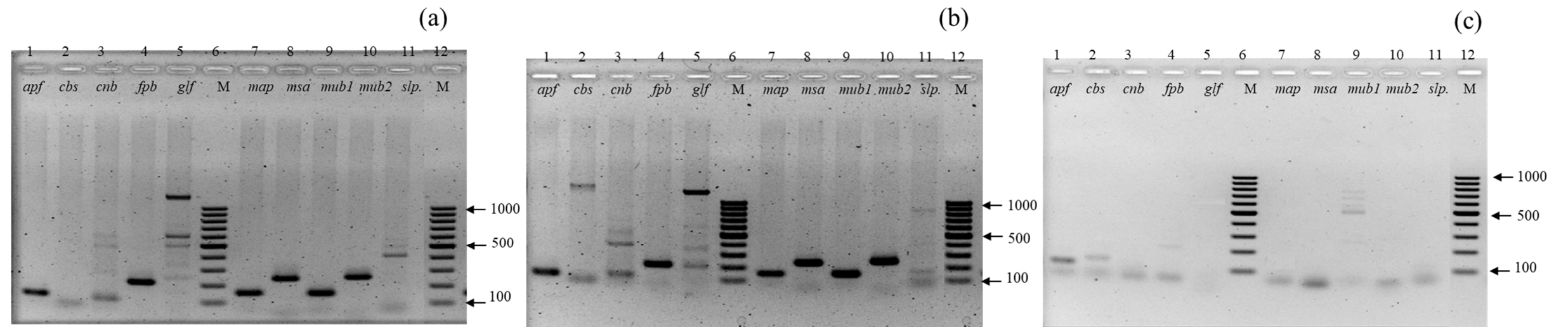


Figure S2. Agarose gel electrophoresis of PCR products from *L. plantarum* BCC4352 (a), *L. plantarum* NCIMB8826 (b), and negative control (c), respectively. Lanes 1-5 use primers *apf*, *cbs*, *cnb*, *fpb*, and *map*. Lanes 7-11 use primers *glf*, *mub1*, *msa*, *mub2*, and *slp*. Lane 6 and Lane 12: 100bp Marker.