

Figure S1. Plasmid map of RBV1-MET used in the methylation strain. This plasmid carries the three *M. thermoacetica* methyltransferase genes required to protect foreign DNA from cleavage when inserted in this host.

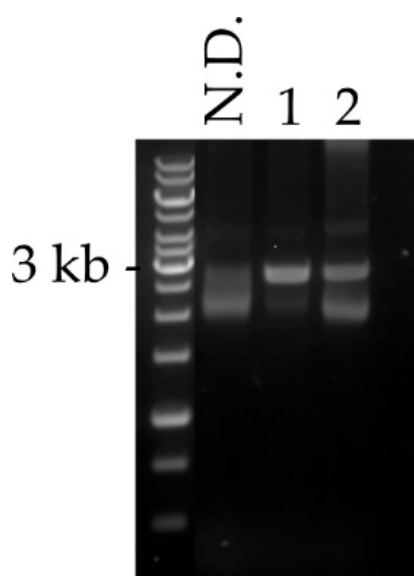


Figure S2. The pre-methylated engineered vector was digested with *ApaI*, an isoschizomer of *Moth_2281*, to test for successful methylation. 1, 2: different pre-methylated plasmid extraction; N.D.: non-digested control. Only partial methylation could be achieved for some plasmids (1).