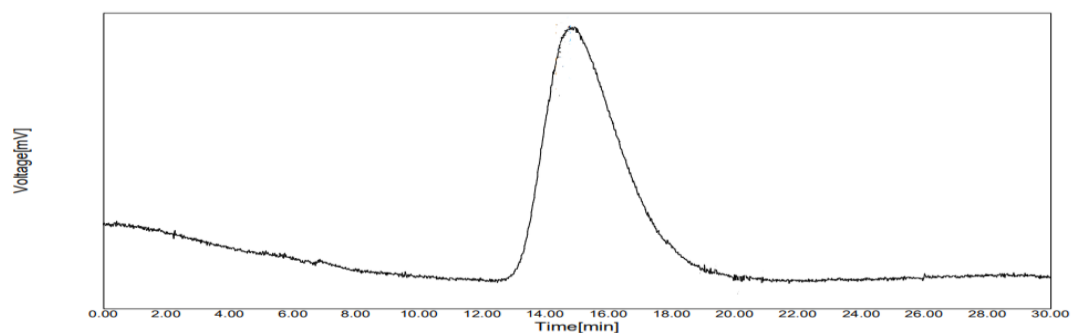


Supplementary Table S1: Biochemical characterization of strain SEDS2

Biochemical Characteristics	Results
Gram staining	+
Motility	+
Indole	-
MR	+
Starch hydrolysis	+
Catalase test	+
Citrate test	-
Triple sugar ion test	Glucose fermentation, No gas, No H <sub>2</sub> S



Supplementary Figure S1. Bacterial isolates plated on colloidal chitin agar plate flooded with Lugol's iodine



Supplementary Figure S2. Gas chromatogram of standard 1% (v/v) ethanol