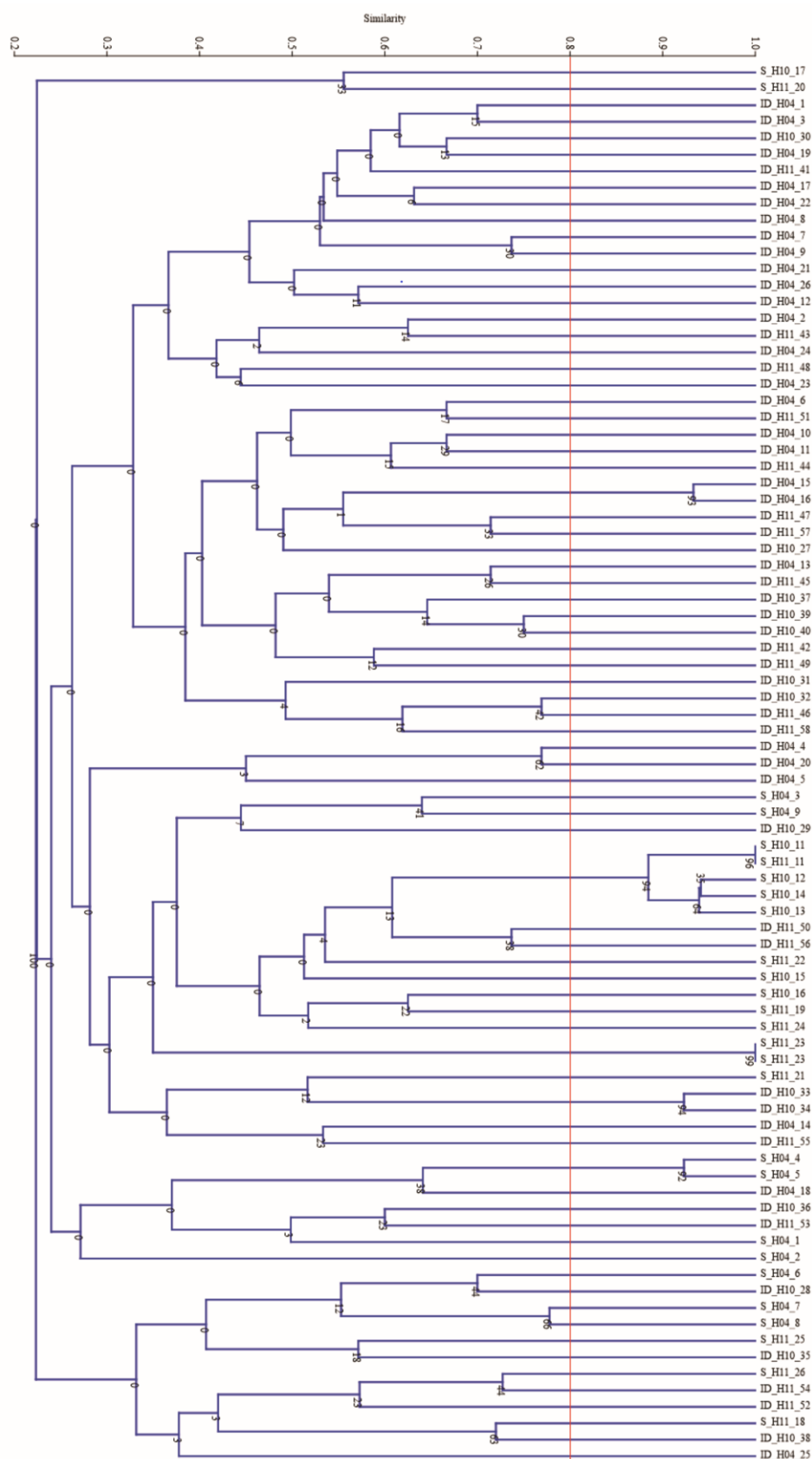


**Table S1:** Nei's genetic identity matrix of the six *S. cerevisiae* grape fermentative-associated populations of the ZARM region.

	<b>ID_H04</b>	<b>ID_H10</b>	<b>ID_H11</b>	<b>S_H04</b>	<b>S_H10</b>	<b>S_H11</b>
<b>ID_H04</b>	*****	0.9746	0.9677	0.9397	0.7611	0.9532
<b>ID_H10</b>	0.0257	*****	0.9820	0.9451	0.7576	0.9694
<b>ID_H11</b>	0.0328	0.0181	*****	0.9428	0.7484	0.9719
<b>S_H04</b>	0.0622	0.0565	0.0589	*****	0.7386	0.9414
<b>S_H10</b>	0.2729	0.2776	0.2898	0.3030	*****	0.7990
<b>S_H11</b>	0.0479	0.0311	0.0285	0.0603	0.2244	*****

Nei's genetic identity (above diagonal) and genetic distance (below diagonal) according to Nei (1972)



**Figure S1:** Dendrogram showing molecular relationships for 84 Interdelta-PCR patterns obtained during three harvests in two Cv. Malbec vineyards of the ZARM region. Numbers at each branch represent bootstrap values (over 100 bootstrap replicates). Cophenetic Correlation Coefficient (CP): 0.612. Patterns identification code corresponds to vineyard: ID: EEA Mendoza INTA Vineyard; S: Winery Vineyard; and vintage: H04: Harvest 2004; H10: Harvest 2010; H11: Harvest 2011.