

RT	Response	Ar/H	RFact	ECL	PeakName	Percent	Comment1	Comment2
0.7180	343882	0.004	----	6.6188		----	< min rt	
0.7257	1.023E+9	0.019	----	6.6688	SOLVENT PEAK	----	< min rt	
1.5846	728	0.009	1.081	11.619	12:0 iso	0.39	ECL deviates -0.002	Reference -0.003
1.6750	390	0.009	1.061	11.999	12:0	0.21	ECL deviates 0.000	Reference -0.001
1.8443	12351	0.009	1.033	12.624	13:0 iso	6.39	ECL deviates 0.002	Reference 0.001
1.8691	1879	0.009	1.029	12.716	13:0 anteiso	0.97	ECL deviates 0.002	Reference 0.001
2.1325	7098	0.009	0.994	13.628	14:0 iso	3.53	ECL deviates 0.000	Reference -0.001
2.2424	6286	0.009	0.982	13.998	14:0	3.09	ECL deviates -0.001	Reference -0.002
2.4396	72723	0.009	0.964	14.631	15:0 iso	35.12	ECL deviates 0.000	Reference -0.001
2.4685	11547	0.009	0.961	14.724	15:0 anteiso	5.56	ECL deviates 0.000	Reference -0.002
2.5298	759	0.010	0.956	14.921	15:1 w5c	0.36	ECL deviates -0.005	
2.5544	1516	0.009	----	15.000	15:0	----	ECL deviates 0.000	
2.6869	1109	0.010	0.946	15.415	16:1 w7c alcohol	0.53	ECL deviates 0.001	
2.7166	5436	0.010	0.944	15.507	Sum In Feature 2	2.57	ECL deviates -0.007	14:0 3OH/16:1 iso I
2.7570	11699	0.010	0.941	15.634	16:0 iso	5.52	ECL deviates 0.001	Reference -0.001
2.7859	527	0.010	0.940	15.724	16:0 anteiso	0.25	ECL deviates -0.002	
2.8046	918	0.012	0.939	15.783	16:1 w11c	0.43	ECL deviates 0.001	
2.8348	16641	0.009	0.937	15.877	Sum In Feature 3	7.81	ECL deviates 0.003	16:1 w6c/16:1 w7c
2.8738	9220	0.009	0.935	15.999	16:0	4.32	ECL deviates 0.000	Reference -0.003
2.9571	1653	0.013	0.931	16.260	15:0 2OH	0.77	ECL deviates 0.006	
2.9917	570	0.010	----	16.369		----		
3.0068	4609	0.010	0.929	16.416	17:1 iso w10c	2.14	ECL deviates 0.002	
3.0295	11014	0.010	0.928	16.487	17:1 iso w5c	5.12	ECL deviates 0.005	
3.0539	4690	0.012	0.926	16.564	17:1 anteiso A	2.18	ECL deviates -0.007	
3.0769	20368	0.010	0.926	16.636	17:0 iso	9.45	ECL deviates -0.001	Reference -0.005
3.1075	4369	0.010	0.924	16.732	17:0 anteiso	2.02	ECL deviates -0.001	Reference -0.005
3.1930	362	0.011	0.921	16.999	17:0	0.17	ECL deviates 0.000	Reference -0.005
3.4447	650	0.013	0.915	17.795	18:1 w9c	0.30	ECL deviates 0.001	
3.5098	1737	0.011	0.913	18.001	18:0	0.79	ECL deviates 0.001	Reference -0.005
4.0186	934	0.013	----	19.660		----		
----	5436	----	----	----	Summed Feature 2	2.57	12:0 aldehyde ?	unknown 10.9525
----	----	----	----	----	----	----	16:1 iso I/14:0 3OH	14:0 3OH/16:1 iso I
----	16641	----	----	----	Summed Feature 3	7.81	16:1 w7c/16:1 w6c	16:1 w6c/16:1 w7c

ECL Deviation: 0.003
Total Response: 210266
Percent Named: 99.28%

Reference ECL Shift: 0.003
Total Named: 208763
Total Amount: 199574

Number Reference Peaks: 14

Matches:

Library	Sim Index	Entry Name
RTSBA6 6.21	0.777	Bacillus-cereus-GC subgroup A
	0.549	Bacillus-thuringiensis-kurstakii
	0.542	Bacillus-thuringiensis-israelensis

Figure S1. Fatty acid analysis results of strain A2

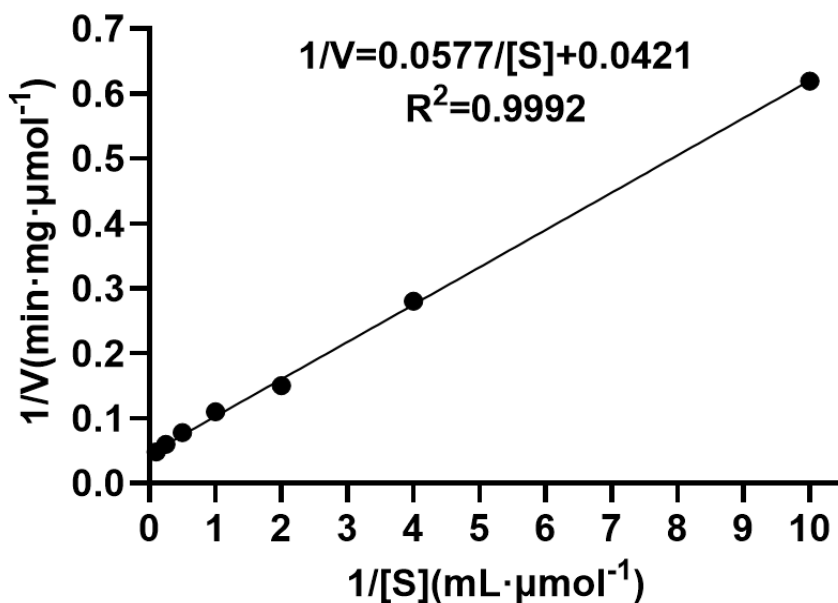


Figure S2. The Lineweaver-Burk plot