

Table S1. Parameters of Pearson χ^2 test used for all analysed apricot cultivars.

Parameter	χ^2	df	p
Weight of fruit (g)	1.981	2	0.37130
Size of flesh (mm)	1.015	1	0.31362
Weight of stone (g)	4.125	2	0.12715
Soluble solids content (%)	8.396	1	0.00376
Relative genome size (pg)	5.302	1	0.02130

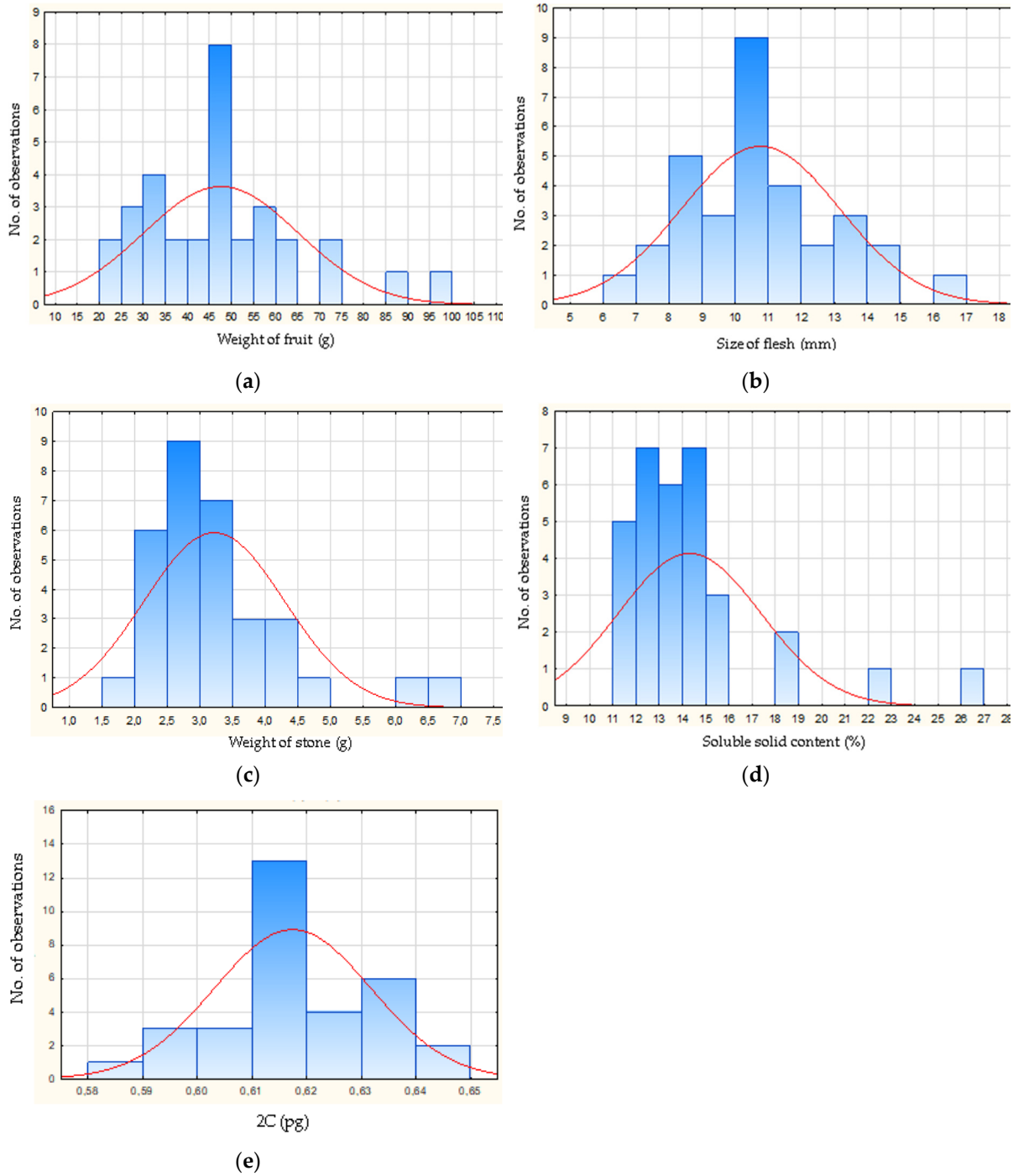


Figure S1. Fitting of continuous normal distribution of (a) weight of fruit, (b) size of flesh, (c) weight of stone, (d) soluble solid content, (e) relative genome size of all analysed apricot cultivars.

Table S2. Parameters of Pearson χ^2 test used for weight of fruit and relative genome size of geographical groups of apricot cultivars (n indicates number of cultivars).

Parameter		n	χ^2	df	p
Weight of fruit (g)	American	8	12.948	8	0.11366
	European	7	16.866	15	0.32693
	Turkish	6	17.799	11	0.08635
	Central Asian	6	16.350	10	0.09003
	East Asian	5	15.612	10	0.11128
Relative genome size (pg)	American	8	8.681	9	0.46721
	European	7	17.285	18	0.50362
	Turkish	6	16.214	14	0.30046
	Central Asian	6	14.249	10	0.16194
	East Asian	5	27.819	15	0.02273