



Article

Woody Canker and Shoot Blight Caused by Botryosphaeriaceae and Diaporthaceae on Mango and Litchi in Italy

Dalia Aiello ^{1,*}, Vladimiro Guarnaccia ^{2,3}, Mariangela Benedetta Costanzo ¹, Giuseppa Rosaria Leonardi ¹, Filomena Epifani ⁴, Giancarlo Perrone ⁴ and Giancarlo Polizzi ¹

¹ Department of Agriculture, Food and Environment (Di3A), University of Catania, 95123 Catania, Italy; benedettacst@gmail.com (M.B.C.); leonardigiusti@outlook.it (G.R.L.); gpolizzi@unict.it (G.P.)

² Department of Agricultural, Forestry and Food Sciences (DISAFA), University of Torino, 10095 Grugliasco, Torino, Italy; vladimiro.guarnaccia@unito.it

³ Centre for Innovation in the Agro-Environmental Sector, AGROINNOVA, University of Torino, 10095 Grugliasco, Torino, Italy

⁴ Institute of Sciences of Food Production, CNR, 70126 Bari, Italy; filomena.epifani@ispa.cnr.it (F.E.); giancarlo.perrone@ispa.cnr.it (G.P.)

* Correspondence: dalia.aiello@unict.it

Abstract: In recent years, the cultivation of tropical fruit crops has increased in the Mediterranean basin, especially in southern Italy. In surveys conducted from 2014 to 2019 woody canker and shoot blight were observed on mango plants (cvs. Kent, Keitt, Sensation, Osteen, and Kensington Pride) and litchi plants (cvs. Way Chee and Kwai Mai Pink) cultivated in Sicily. Botryosphaeriaceae and Diaporthaceae were consistently isolated from symptomatic samples. Morphological characterization and multi-locus phylogenies using three genomic loci (a portion of translation elongation factor 1- α gene, a portion of the β -tubulin gene, and an internal transcribed spacer) identified these fungi as *Neofusicoccum parvum*, *Lasiodiplodia theobromae*, *Botryosphaeria dothidea*, *Diaporthe foeniculina*, and *Diaporthe baccae* on mango and *Diaporthe foeniculina* and *Diaporthe rudis* on litchi. Pathogenicity tests on healthy mango (cv. Kensington Pride) and litchi (cv. Way Chee) plants demonstrated the pathogenicity of the isolates used in the study, and Koch's postulates were fulfilled for all pathogens. To our knowledge, this is the first report of *L. theobromae*, *B. dothidea*, and *Diaporthe* species on mango in Italy and the first report worldwide of woody canker and shoot blight caused by *D. foeniculina* and *D. rudis* on litchi plants.

Keywords: Botryosphaeriaceae and Diaporthaceae; *Mangifera indica*; *Litchi chinensis*; multi-locus phylogenies



Citation: Aiello, D.; Guarnaccia, V.; Costanzo, M.B.; Leonardi, G.R.; Epifani, F.; Perrone, G.; Polizzi, G. Woody Canker and Shoot Blight Caused by Botryosphaeriaceae and Diaporthaceae on Mango and Litchi in Italy. *Horticulturae* **2022**, *8*, 330. <https://doi.org/10.3390/horticulturae8040330>

Academic Editor: Harald Scherm

Received: 15 March 2022

Accepted: 11 April 2022

Published: 14 April 2022

Publisher's Note: MDPI stays neutral with regard to jurisdictional claims in published maps and institutional affiliations.



Copyright: © 2022 by the authors. Licensee MDPI, Basel, Switzerland. This article is an open access article distributed under the terms and conditions of the Creative Commons Attribution (CC BY) license (<https://creativecommons.org/licenses/by/4.0/>).

1. Introduction

In recent years, tropical crop cultivation has increased in the Mediterranean basin, and especially in Italy where the environmental conditions have allowed an intensification of their production. These crops represent a sector of great interest for their high nutritional value, antioxidant properties, and high income generated by the fruit market. In particular, the nutritional composition of some crops such as mango and litchi has been extensively studied for human nutrition, health, and other applications in the pharmaceutical and food industries [1–3]. Moreover, mango peels have recently been used to develop biodegradable or edible packing materials [4]. Due to their tropical origin, the cultivation of these crops is limited to southern Italy (Calabria) and insular Italy (Sardinia and Sicily). In Sicily, the cultivation of mango and litchi is mainly localized in the north-eastern coastal area of the island.

Mango (*Mangifera indica* L.) is one of the most popular fruit crops in the world and production is concentrated in Asia, Africa, America, and Oceania [5]. In Italy, the cultivation of mango for commercial purposes started during 1980–1990 in the Catania province

(eastern Sicily). Thereafter, its cultivation expanded to the other provinces of the island reaching an area of approximately 200 ha [6]. In this species, the occurrence of fungal and bacterial infections pre- and post-harvest can compromise plant growth and fruit quality. Fortunately, only a few diseases have been reported to date in Italy. Among these, woody cankers and stem-end rot of fruit caused by *Neofusicoccum* spp. and decay and stem-end rot of fruit caused by some species of *Colletotrichum* are the major diseases limiting the production of mango [7,8]. These pathogens lead to substantial crop losses, quality changes, market value decreases, and in some cases post-harvest losses, especially during ripening and storage. Moreover, leaf spots caused by *Pestalotiopsis uvicola* and *P. clavispora* [9] and wilt caused by *Verticillium dahliae* were also reported [10]. Regarding bacterial diseases, apical necrosis caused by *Pseudomonas syringae* pv. *syringae* is a major disease in the Mediterranean area and it has been described as being present in different countries including Italy [11–14].

Southeast Asia (China, Vietnam, Thailand, and India) represents the main world producer of litchi (*Litchi chinensis* Sonn.), followed by Australia, Africa, the Mediterranean basin, and tropical America [15]. Several fungal diseases affecting litchi have been reported worldwide. Downy blight caused by *Phytophthora litchii* [16] and anthracnose and litchi pepper spot caused by *Colletotrichum gloeosporioides*, *C. siamense*, and *C. simmondsii* [17,18] are considered the major pre-harvest diseases. Moreover, leaf, panicle, and fruit blights caused by *Alternaria alternata* [19] and algal leaf spots caused by *Cephaleuros virescens* were reported to cause severe economic losses. In Italy, no fungal diseases were reported on litchi.

Mango and litchi have had a great economic impact on the European market, and few studies were conducted on these crops in Italy until now. For this reason, it is necessary to investigate the diseases affecting these crops, which could represent a limiting factor for their production, in order to develop effective management strategies. In recent years with the rapid expansion of their production, some diseases were observed in mango and litchi orchards. Surveys carried out since 2014 led us to detect severe symptoms of woody canker, shoot blight, and dieback on mango and litchi plants in the main growing area of north-eastern Sicily.

The aims of this study were to (i) evaluate the etiology of the disease by morphological and molecular characterization of causal agents associated with these symptoms and (ii) determine their pathogenicity.

2. Materials and Methods

2.1. Field Survey and Isolation

Between 2014 and 2019, surveys conducted in north-eastern Sicily (Catania and Messina provinces) revealed the presence of 3–4-year-old mango plants (cvs. Kent, Keitt, Sensation, Osteen, and Kensington Pride) and 7–8-year-old litchi plants (cvs. Way Chee and Kwai Mai Pink) showing woody canker and shoot blight. Symptomatic samples were collected and brought to the laboratory of the Department of Agriculture, Food and Environment, University of Catania, for further investigations. For culture isolation, symptomatic woody tissues were surface-disinfected for 1 min in 1.2% sodium hypochlorite, rinsed in sterile water, placed on potato dextrose agar (PDA 3.9%, Oxoid, Basingstoke Hampshire, UK) amended with 100 mg/L of streptomycin sulfate (Sigma-Aldrich, St. Louis, MO, USA), and then incubated at 25 ± 1 °C for three days. Subsequently, from the margin of each developing colony, a piece of mycelium was taken to obtain pure cultures. After about 5–7 days, a single conidium or hyphal tip from each pure culture was transferred to PDA and maintained at 25 ± 1 °C.

2.2. Morphological Characterization

For the morphological characterization of the pathogen, the isolates were transferred to PDA and malt extract agar (MEA; 2% malt extract, Merck, Darmstadt, Germany) supplemented with streptomycin sulfate (100 µg/mL) and incubated at 25 °C. In addition, technical agar (TA, 1.2% agar, Oxoid, Basingstoke Hampshire, UK) with sterilized pine needles placed onto the surface (PNA) and then maintained at room temperature under near-ultraviolet light (NUV) was used to encourage production of pycnidia. The size and shape of conidia and colour and shape of pycnidia/conidiomata were examined. Conidia were measured by mounting fungal structures in clear lactic acid on microscope slides and observing under an Olympus BX 61 light microscope. Fifty measurements of conidia were made for one representative isolate for each fungal species recovered.

2.3. Molecular Characterization

Mycelium was collected from 5-day-old fungal cultures grown on PDA and MEA medium. Total fungal DNA was extracted using the Wizard Genomic DNA Purification Kit (Promega Corporation, Madison, WI, USA). The internal transcriber spacer region (ITS) of the rDNA was amplified with primers ITS4 and ITS5 [20], the primers EF1-728F and EF1-986R [21] were used to amplify part of the translation elongation factor 1alpha gene (*tef1*), and primer sets Bt-2a and Bt-2b [22] were used for the partial betatubulin gene (*tub2*). Amplification by polymerase chain reaction (PCR) was performed in a total volume of 25 µL using OneTaq 2X Master Mix with Standard Buffer (BioLabs, Ipswich, MA, USA), according to the manufacturer's instructions on an Eppendorf AG 22331 Hamburg Mastercycler. One reaction was composed of 12.5 µL of OneTaq 2X Master Mix, 0.5 µL of each primer, and 10.5 µL of nuclease-free water. The thermal cycle consisted of an initial denaturation temperature of 94 °C for 120 s, followed by 35 cycles at the denaturation temperature of 94 °C for 30 s, the annealing temperature of 55 °C (ITS), 57–59 °C (*tef1*), or 58 °C (*tub2*) for 30 s, the elongation temperature of 72 °C for 40 s (ITS), 1 min (*tef1*), or 50 s (*tub2*), and a final extension at 72 °C for 5 min. The amplification products were separated by 1% agarose gel electrophoresis, purified and sequenced by Macrogen Inc. (South Korea) using both PCR primers. Purified sequence reactions were analyzed by an Applied Biosystems 3730 × 1 DNA Analyzer (Life Technologies, Carlsbad, CA, USA). The generated DNA sequences were analyzed, and consensus sequences were edited using the MEGA X: Molecular Evolutionary Genetics Analysis across computing platforms [23] and submitted to GenBank.

2.4. Phylogenetic Analysis

New sequences obtained in this study were blasted against the NCBI's GenBank nucleotide database to determine the closest sequences for a taxonomic arrangement of the studied isolates. Alignments of different gene regions, including sequences obtained from this study and sequences retrieved from GenBank, were initially performed with the MAFFT v. 7 online server (<http://mafft.cbrc.jp/alignment/server/index.html>, accessed on 15 February 2022) [24] and then manually adjusted in MEGA v. 7 [25]. A phylogenetic analysis was conducted as concatenated multilocus sequence analyses using the ITS, *tef1*, and *tub2* combination for the *Botryosphaeria*, *Diaporthe*, *Lasiodiplodia*, and *Neofusicoccum* genera [26,27]. The ex-type strain of *Neofusicoccum parvum* (CMW9081) was used as an outgroup for the analysis of *Botryosphaeria* spp., *Diaporthella corylina* (CBS 121124) was used as an outgroup for *Diaporthe* spp., *Neodeightonia phoenicum* (CBS 122528) was used as an outgroup for *Lasiodiplodia* spp., and *Botryosphaeria dothidea* (CBS 110302) was used as an outgroup for *Neofusicoccum* spp. The phylogenies were based on Bayesian Inference (BI) for the multi-locus analyses. The best evolutionary model was determined for each partition using MrModeltest v. 2.3 [28] and incorporated into the analyses. MrBayes v. 3.2.5 [29] was used to generate dendrograms under optimal criteria per partition. The Markov Chain Monte Carlo (MCMC) analysis used four chains and started from a random tree topology. The heating parameter was set at 0.2 and trees were sampled every 1000 generations.

Analyses stopped when the average standard deviation of split frequencies was below 0.01. Sequences generated in this study were deposited in GenBank (Table 1).

Table 1. Fungal isolates collected in this study and their Genbank accession numbers.

| Fungal Species | Culture No. | Host/Cultivar | Genbank Accession Number | | |
|---------------------------------|-------------|---------------------------------------|--------------------------|-------------|-------------|
| | | | ITS | <i>tef1</i> | <i>tub2</i> |
| <i>Lasiodiplodia theobromae</i> | KEN1 | <i>Mangifera indica</i> cv. Kent | OL470874 | OL891701 | OL891738 |
| <i>L. theobromae</i> | KEN2 | <i>M. indica</i> cv. Kent | OL470875 | OL891699 | OL891742 |
| <i>L. theobromae</i> | KEN3 | <i>M. indica</i> cv. Kent | OL470876 | OL891700 | OL891739 |
| <i>L. theobromae</i> | KEN4 | <i>M. indica</i> cv. Kent | OL470877 | OL891708 | OL891741 |
| <i>L. theobromae</i> | KEN5 | <i>M. indica</i> cv. Kent | OL470878 | OL891709 | OL891740 |
| <i>Neofusicoccum parvum</i> | KEI1 | <i>M. indica</i> cv. Keitt | OL470866 | OL891684 | OL891757 |
| <i>N. parvum</i> | KEI2 | <i>M. indica</i> cv. Keitt | OL470867 | OL891690 | OL891756 |
| <i>N. parvum</i> | KEI3 | <i>M. indica</i> cv. Keitt | OL470868 | OL891695 | OL955497 |
| <i>N. parvum</i> | KEI4 | <i>M. indica</i> cv. Keitt | OL470869 | OL891696 | OL891751 |
| <i>N. parvum</i> | KEI5 | <i>M. indica</i> cv. Keitt | OL470870 | OL891697 | OL891752 |
| <i>N. parvum</i> | KEI6 | <i>M. indica</i> cv. Keitt | OL470871 | OL891698 | OL891753 |
| <i>N. parvum</i> | KEI7 | <i>M. indica</i> cv. Keitt | OL470872 | OL891710 | OL891754 |
| <i>N. parvum</i> | KEI8 | <i>M. indica</i> cv. Keitt | OL470873 | OL891711 | OL891759 |
| <i>N. parvum</i> | SENS1 | <i>M. indica</i> cv. Sensation | OL470882 | OL891688 | OL955498 |
| <i>N. parvum</i> | SENS2 | <i>M. indica</i> cv. Sensation | OL470883 | OL891689 | OL955500 |
| <i>N. parvum</i> | SENS3 | <i>M. indica</i> cv. Sensation | OL470884 | OL891713 | OL891750 |
| <i>N. parvum</i> | SENS4 | <i>M. indica</i> cv. Sensation | OL470885 | OL891691 | OL955496 |
| <i>N. parvum</i> | SENS5 | <i>M. indica</i> cv. Sensation | OL470886 | OL891692 | OL891758 |
| <i>N. parvum</i> | SENS6 | <i>M. indica</i> cv. Sensation | OL470887 | OL891712 | OL955495 |
| <i>N. parvum</i> | SENS7 | <i>M. indica</i> cv. Sensation | OL470888 | OL891693 | OL955499 |
| <i>N. parvum</i> | SENS8 | <i>M. indica</i> cv. Sensation | OL470889 | OL891694 | OL955494 |
| <i>N. parvum</i> | OSTB1 | <i>M. indica</i> cv. Osteen | OL470879 | OL891685 | OL891749 |
| <i>N. parvum</i> | OSTB2 | <i>M. indica</i> cv. Osteen | OL470880 | OL891686 | OL891760 |
| <i>N. parvum</i> | OSTB3 | <i>M. indica</i> cv. Osteen | OL470881 | OL891687 | OL891755 |
| <i>Diaporthe foeniculina</i> | OSTD1 | <i>M. indica</i> cv. Osteen | OL477409 | OL891674 | OL891729 |
| <i>D. foeniculina</i> | OSTD2 | <i>M. indica</i> cv. Osteen | OL477410 | OL891675 | OL891730 |
| <i>D. foeniculina</i> | OSTD3 | <i>M. indica</i> cv. Osteen | OL477411 | OL891682 | OL891731 |
| <i>D. foeniculina</i> | OSTD4 | <i>M. indica</i> cv. Osteen | OL477412 | OL891676 | OL891720 |
| <i>Botryosphaeria dothidea</i> | MG2 | <i>M. indica</i> cv. Kensington Pride | OL470890 | OL891704 | OL891746 |
| <i>B. dothidea</i> | MG3 | <i>M. indica</i> cv. Kensington Pride | OL470891 | OL891706 | OL891743 |
| <i>B. dothidea</i> | MG4 | <i>M. indica</i> cv. Kensington Pride | OL470892 | OL891702 | OL891748 |
| <i>B. dothidea</i> | MG5 | <i>M. indica</i> cv. Kensington Pride | OL470893 | OL891705 | OL891744 |
| <i>B. dothidea</i> | MG6 | <i>M. indica</i> cv. Kensington Pride | OL470894 | OL891707 | OL891745 |
| <i>B. dothidea</i> | MG7 | <i>M. indica</i> cv. Kensington Pride | OL470895 | OL891703 | OL891747 |
| <i>D. foeniculina</i> | MG9 | <i>M. indica</i> cv. Kensington Pride | OL477413 | OL891678 | OL891722 |
| <i>D. baccae</i> | MG11 | <i>M. indica</i> cv. Kensington Pride | OL477414 | OL891681 | OL891733 |
| <i>D. foeniculina</i> | MG13 | <i>M. indica</i> cv. Kensington Pride | OL477415 | OL891677 | OL891727 |
| <i>D. foeniculina</i> | MG14 | <i>M. indica</i> cv. Kensington Pride | OL477416 | OL891679 | OL891728 |
| <i>D. foeniculina</i> | MG15 | <i>M. indica</i> cv. Kensington Pride | OL477417 | OL891683 | OL891721 |
| <i>D. foeniculina</i> | LC1 | <i>Litchi chinensis</i> cv. Way Chee | OL477395 | OL891664 | OL891714 |
| <i>D. foeniculina</i> | LC2 | <i>L. chinensis</i> cv. Way Chee | OL477402 | OL891670 | OL891723 |
| <i>D. rudis</i> | LC3 | <i>L. chinensis</i> cv. Way Chee | OL477403 | OL891660 | OL891737 |
| <i>D. rudis</i> | LC4 | <i>L. chinensis</i> cv. Way Chee | OL477404 | OL891662 | OL891734 |
| <i>D. rudis</i> | LC5 | <i>L. chinensis</i> cv. Way Chee | OL477405 | OL891663 | OL891736 |
| <i>D. rudis</i> | LC6 | <i>L. chinensis</i> cv. Way Chee | OL477406 | OL891661 | OL891735 |

Table 1. Cont.

| Fungal Species | Culture No. | Host/Cultivar | Genbank Accession Number | | |
|-----------------------|-------------|---------------------------------------|--------------------------|-------------|-------------|
| | | | ITS | <i>tef1</i> | <i>tub2</i> |
| <i>D. foeniculina</i> | LC7 | <i>L. chinensis</i> cv. Way Chee | OL808652 | OL891671 | OL891724 |
| <i>D. foeniculina</i> | LC8 | <i>L. chinensis</i> cv. Way Chee | OL477407 | OL891672 | OL891725 |
| <i>D. foeniculina</i> | LC9 | <i>L. chinensis</i> cv. Kwai Mai Pink | OL477408 | OL891673 | OL891719 |
| <i>D. foeniculina</i> | LC10 | <i>L. chinensis</i> cv. Kwai Mai Pink | OL477396 | OL891665 | OL891732 |
| <i>D. foeniculina</i> | LC11 | <i>L. chinensis</i> cv. Kwai Mai Pink | OL477397 | OL891666 | OL891726 |
| <i>D. foeniculina</i> | LC12 | <i>L. chinensis</i> cv. Kwai Mai Pink | OL477398 | OL891667 | OL891715 |
| <i>D. foeniculina</i> | LC13 | <i>L. chinensis</i> cv. Kwai Mai Pink | OL477399 | OL891668 | OL891716 |
| <i>D. foeniculina</i> | LC14 | <i>L. chinensis</i> cv. Kwai Mai Pink | OL477400 | OL891680 | OL891717 |
| <i>D. foeniculina</i> | LC15 | <i>L. chinensis</i> cv. Kwai Mai Pink | OL477401 | OL891669 | OL891718 |

2.5. Pathogenicity Tests

Pathogenicity tests were conducted in controlled conditions with one representative isolate of each fungal type isolated from mango and litchi plants, except for *N. parvum*. For each isolate, six potted plants of mango and litchi (2 years old, cvs. Kensington Pride and Way Chee, respectively) were wounded at 3 different points on the stem. Inoculations were conducted after removing bark portions with a 5 mm diam. cork borer, placing a 5 mm plug from a 10-day-old PDA culture of the test isolate into the wound, and covering with Parafilm® (Pechney Plastic Packaging Inc., Chicago, IL, USA) to prevent desiccation and contamination. An equal number of plants were inoculated in the same way using sterile PDA plugs for control. Inoculated plants were then incubated at 25 ± 1 °C and 95% relative humidity (RH) in an 18 h fluorescent light/16 h dark regime in a growth chamber. Symptom development was evaluated after 2 months. In order to fulfill Koch's postulates, re-isolations were performed following the procedure described above. Then, each fungus obtained was identified through morphological and molecular characteristics.

3. Results

3.1. Field Survey and Morphological Characterization

Symptomatic mango plants (cvs. Kent, Keitt, Sensation, Osteen, and Kensington Pride) were observed in seven orchards (from Giarre to Fiumefreddo municipalities, Catania province), whereas litchi symptoms were observed in only one orchard in Caronia municipality (Messina province). On mango plants, disease incidence (DI) varied from 3% to 18% according to the plant cultivar and orchard investigated, with the lowest values for Kensington Pride and the highest values for Osteen. On litchi, the DI was approximately 30% for Way Chee and 1% for Kwai Mai Pink.

Field disease symptoms of mango and litchi plants are shown in Figures 1 and 2. In detail, all investigated cultivars of mango showed various external disease symptoms including shoot and twig blight, branch dieback, woody canker, and cracking of the bark. Occasionally on mango, woody canker can completely girdle the rootstock Gomera-3 and kill the tree in one to several months. Internal observation of symptomatic tissues revealed a brown wood discoloration (Figure 1). Litchi plants (cvs. Way Chee and Kwai Mai Pink) showed woody canker and shoot and twig blight. Affected leaves showed a brownish color and wilting (Figure 2).

Different types of colonies were consistently obtained from symptomatic tissues. A total of 54 fungal isolates were established from single conidium or hyphal tip cultures on the PDA (Table 1). Thirty-five isolates were characterized by dark green to gray, fast-growing mycelium on the MEA. Moreover, the isolates produced pycnidia containing pigmented or hyaline conidia on the PNA within 4 weeks. These characteristics led us to identify the fungal isolates as *Botryosphaeriaceae* spp. based on the earlier family description [30]. Fifteen isolates were characterized by slow-growing colonies on the PDA, with white, sparse, aerial mycelium and greenish-yellow pigmentation developing on reverse from the center. These isolates produced pycnidia containing hyaline conidia on

the PNA within 4 weeks. Based on these characteristics, the fungal isolates were identified as *Diaporthe* spp. [31]. The morphological characteristics of each species recognized are reported in Table 2.



Figure 1. Symptoms of woody canker and shoot blight on mango plants. (a–c) Plant death as a consequence of trunk canker on rootstock Gomera-3; (d) branch dieback; (e–g) different types of canker lesions; (h) internal discoloration under canker lesion.



Figure 2. Symptoms of woody canker and shoot blight on litchi plants. (a) Twig blight and defoliation; (b) shoot blight; (c,d) leaf blight.

Table 2. Morphological characteristics of isolates collected in this study.

| Species | Morphological Characteristics | | | |
|---------------------------------|---|--|---|--|
| | Colony on PDA | Pycnidia | Conidia | |
| <i>Diaporthe baccae</i> | Cream colour becoming smoky gray, flattened, dense mycelium; grayish sepia on the lower surface | Brown to black, globose with yellowish masses on MEA | α conidia aseptate, hyaline, fusiform to ellipsoidal tapering toward both ends; $5.1\text{--}9.4 \times 2\text{--}9.4 \mu\text{m}$ | β conidia aseptate, hyaline, apex acutely rounded, base truncate; $16.8\text{--}27.1 \times 0.8\text{--}2.2 \mu\text{m}$ |
| <i>D. foeniculina</i> | White, sparse, cottony, aerial mycelium; greenish yellow on the lower surface | Black, globose to subglobose with yellowish conidial masses on PNA | α conidia aseptate, hyaline, ellipsoidal to fusiform, rarely with subtruncate base; $3.9\text{--}11.1 \times 1.5\text{--}3.4 \mu\text{m}$ | β conidia aseptate, hyaline, slightly curved with subtruncate base; $15.8\text{--}27.1 \times 0.8\text{--}2.2 \mu\text{m}$ |
| <i>D. rudis</i> | White, fluffy, aerial mycelium; whitish yellow on the lower surface | not observed | α conidia not observed | β conidia not observed |
| <i>Botryosphaeria dothidea</i> | Olivaceous becoming grayish-dark brown, dense mycelium; grayish-dark brown on the lower surface | Black to brown, globose to subglobose on PNA | Aseptate, hyaline, fusiform to subclavate with subtruncate to bluntly rounded base; $17.7\text{--}27.8 \times 4.2\text{--}7.4 \mu\text{m}$ | - |
| <i>Lasiodiplodia theobromae</i> | White, dense aerial mycelium becoming grayish green; yellowish gray on the lower surface | Black, globose to subglobose on PNA | Aseptate, hyaline, subovoid to ellipsoid immature, become 1-septate with age, dark brown, thick walled, ellipsoidal; $22.1\text{--}26.6 \times 12.9\text{--}14.5 \mu\text{m}$ | - |
| <i>Neofusicoccum parvum</i> | White, dense aerial mycelium becoming greenish gray; greenish gray on the lower surface | Dark to brown, globose to subglobose on PNA | Aseptate, old conidia becoming 1–2 septate, hyaline, ellipsoidal with apex round and base flat; $13.3\text{--}20.9 \times 5.2\text{--}7.5 \mu\text{m}$ | - |

3.2. Molecular Characterization and Phylogenetic Analysis

The combined locus phylogeny of *Botryosphaeria* consisted of 21 sequences, *Diaporthe* consisted of 52 sequences, *Lasiodiplodia* 37 sequences, and *Neofusicoccum* 37 sequences including outgroups. A total of 1433 characters (ITS: 1–588, *tef1*: 591–976, and *tub2*: 980–1433) were included in the *Botryosphaeria* phylogenetic analyses. A total of 1412 characters (ITS: 1–397, *tef1*: 404–935, and *tub2*: 942–1412) were included in the *Diaporthe* phylogenetic analyses. The analyses for the *Lasiodiplodia* group consisted of 1094 nucleotides (ITS: 1–472, *tef1*: 479–758, and *tub2*: 765–1094) and the analyses of *Neofusicoccum* were based on a total of 1153 characters (ITS: 1–499, *tef1*: 506–890, and *tub2*: 897–1153). For both the Bayesian analyses, MrModeltest recommended the models SYM (symmetrical model) + I (proportion of invariable sites) + G (gamma distribution) for ITS, and GTR (generalized time-reversible model) + G for *tef1* and *tub2*. Unique site patterns for each partition and all the parameters of the Bayesian analyses are reported in Table 3. In the *Botryosphaeria* species analysis, six isolates from symptomatic mango plants clustered with the ex-type and one reference strain of *B. dothidea* (Figure 3), whereas the final tree generated for *Diaporthe* showed that four isolates from litchi grouped with two reference strains of *D. rudis*, two from mango and three strains from litchi with the ex-type strain of *D. baccae*, and seven from mango and eight strains from litchi with the ex-type strain of *D. foeniculina* (Figure 4). Five isolates

from mango clustered with the ex-type and one reference strain of *L. theobromae* (Figure 5), and 19 isolates clustered as *N. parvum* in the phylogenetic tree generated from the analysis of the *Neofusicoccum* genus (Figure 6).

Table 3. Bayesian inference characteristics of the analyses conducted in this study.

| Locus(i) | <i>Botryosphaeria</i> | <i>Diaporthe</i> | <i>Lasiodiplodia</i> | <i>Neofusicoccum</i> |
|-------------------------------------|---------------------------------|---------------------------------|---------------------------------|---------------------------------|
| | ITS + <i>tef1</i> + <i>tub2</i> | ITS + <i>tef1</i> + <i>tub2</i> | ITS + <i>tef1</i> + <i>tub2</i> | ITS + <i>tef1</i> + <i>tub2</i> |
| Unique site patterns of ITS | 92 | 318 | 56 | 44 |
| Unique site patterns of <i>tef1</i> | 114 | 151 | 108 | 31 |
| Unique site patterns of <i>tub2</i> | 75 | 241 | 37 | 39 |
| Generation ran | 845,000 | 1,790,000 | 880,000 | 3,195,000 |
| Generated trees | 1692 | 3582 | 1762 | 6392 |
| Sampled trees | 1270 | 2688 | 1322 | 4794 |

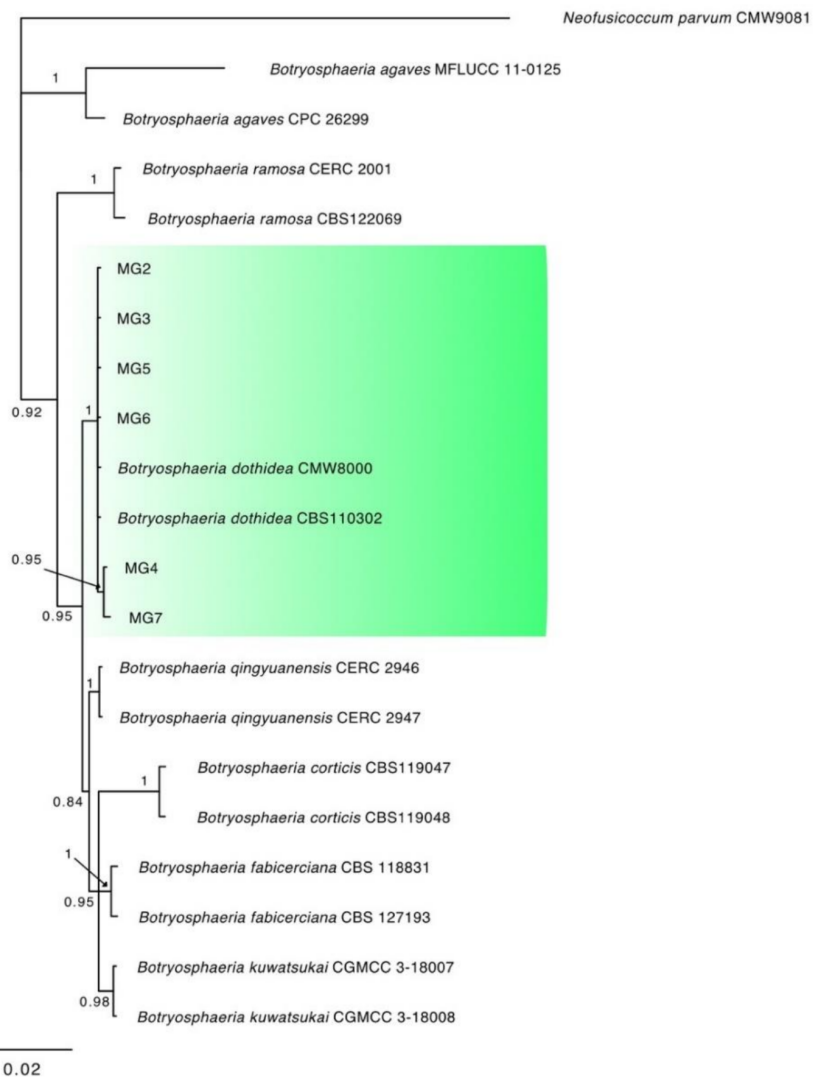


Figure 3. Consensus phylogram of 1692 trees resulting from a Bayesian analysis of the combined ITS, *tef1*, and *tub2* sequence of *Botryosphaeria* species. The tree was rooted to *Neofusicoccum parvum* (CMW9081). Bayesian posterior probability values are indicated at the nodes. The cluster containing the isolates obtained in this study is highlighted in green.

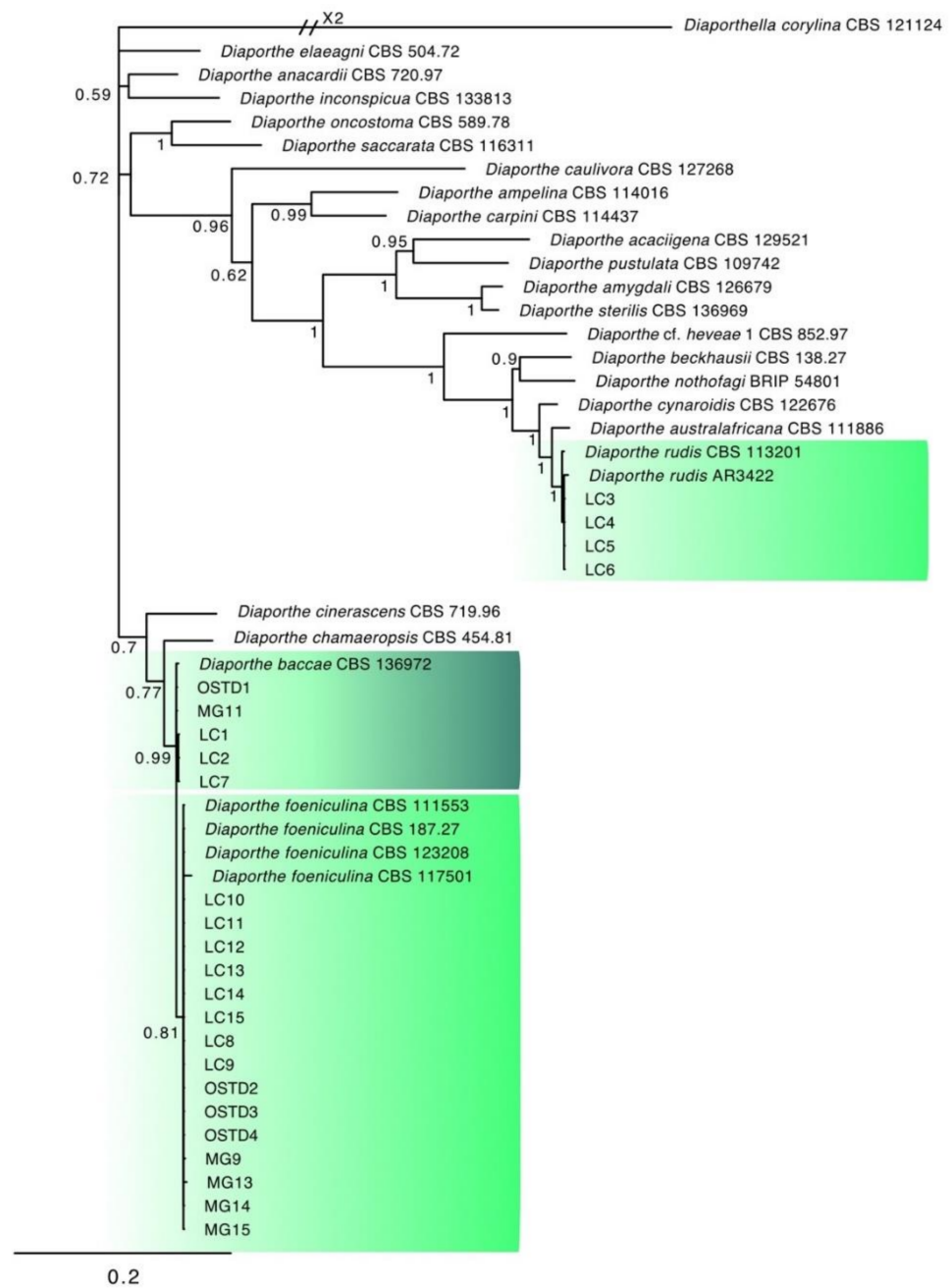


Figure 4. Consensus phylogram of 3582 trees resulting from a Bayesian analysis of the combined ITS, *tef1*, and *tub2* sequence of *Diaporthe* species. The tree was rooted to *Diaporthella corylina* (CBS121124). Bayesian posterior probability values are indicated at the nodes. The clusters containing the isolates obtained in this study are highlighted in green.

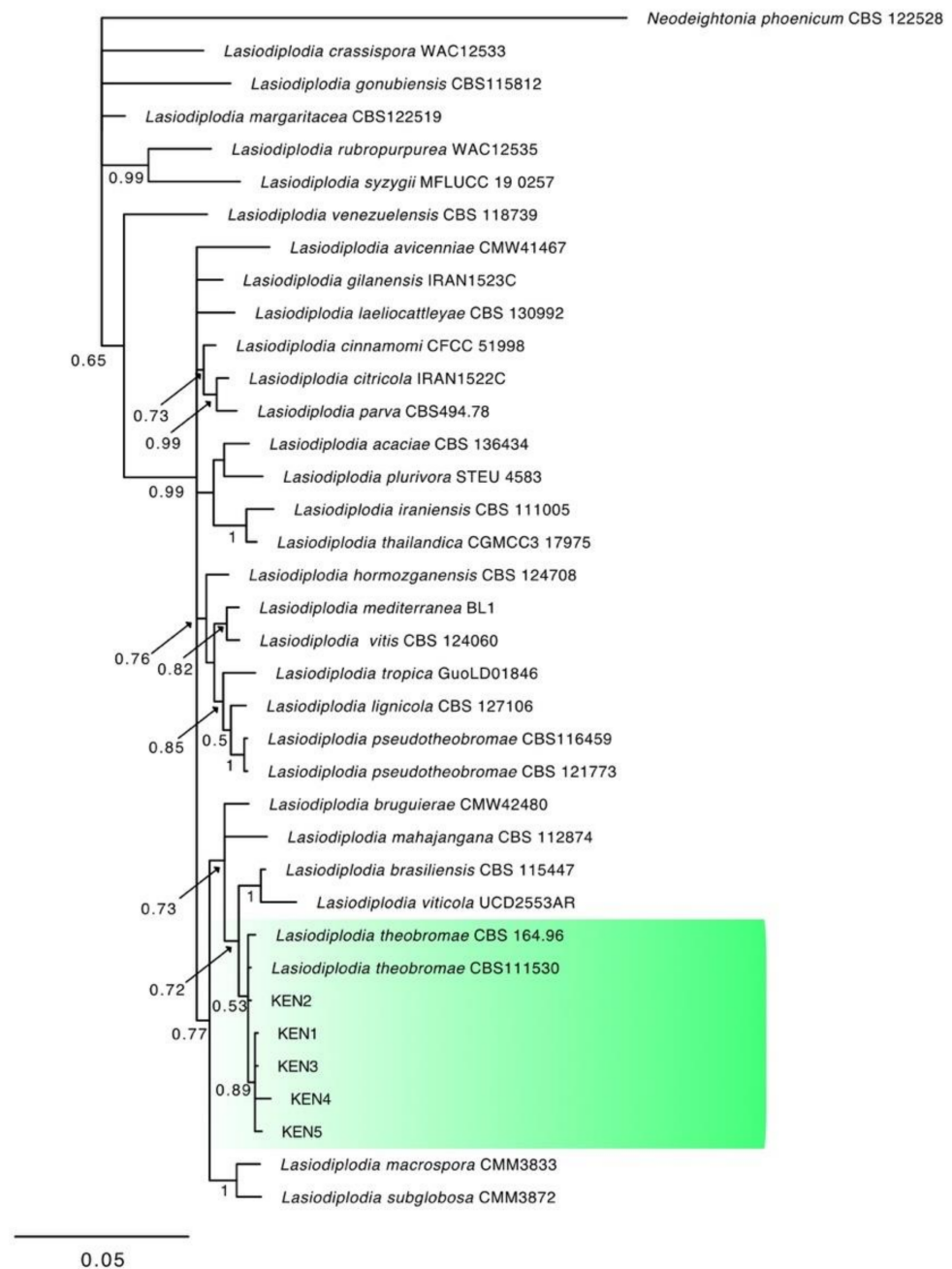


Figure 5. Consensus phylogram of 1762 trees resulting from a Bayesian analysis of the combined ITS, *tef1*, and *tub2* sequence of *Lasiodiplodia* species. The tree was rooted to *Neodeightonia phoenicum* (CBS122528). Bayesian posterior probability values are indicated at the nodes. The cluster containing the isolates obtained in this study is highlighted in green.

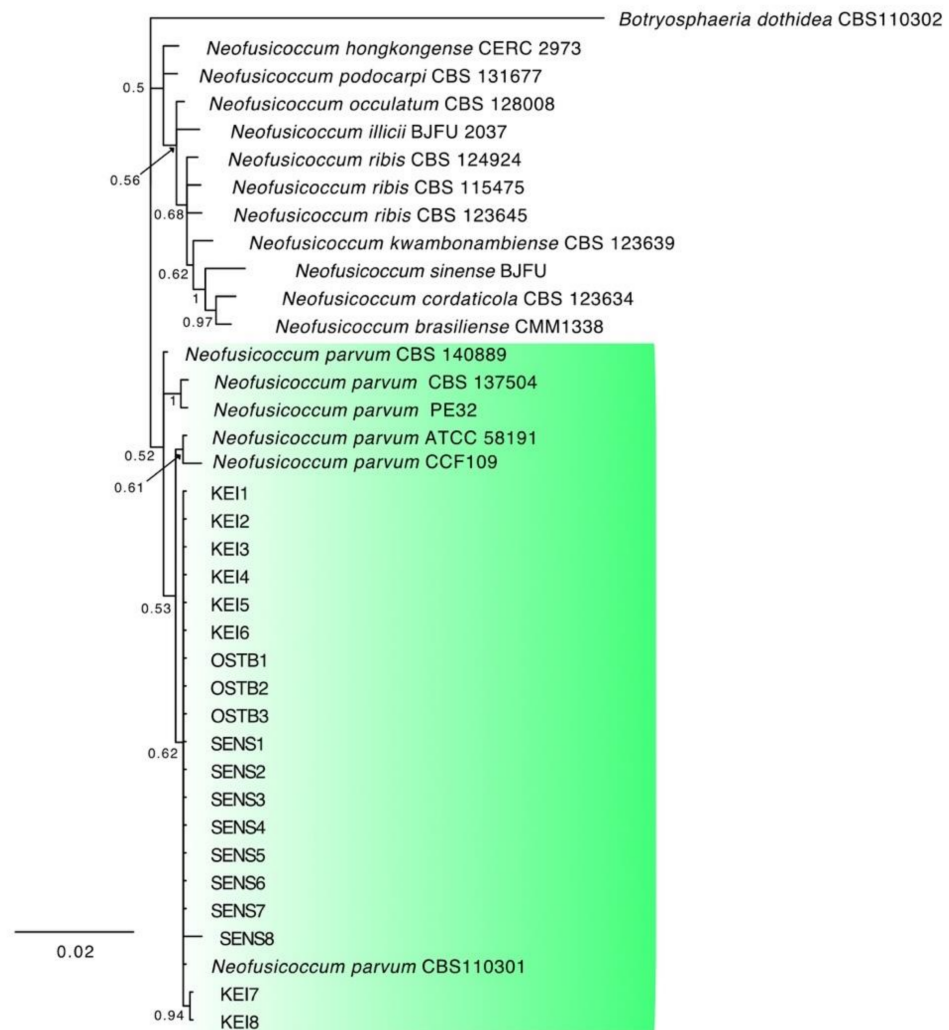


Figure 6. Consensus phylogram of 6392 trees resulting from a Bayesian analysis of the combined ITS, *tef1*, and *tub2* sequence of *Neofusicoccum* species. The tree was rooted to *Botryosphaeria dothidea* (CBS110302). Bayesian posterior probability values are indicated at the nodes. The cluster containing the isolates obtained in this study is highlighted in green.

3.3. Pathogenicity Tests

After 1 month, all the isolates of the different fungal species caused necrotic lesions on the wood of the inoculated plants. In detail, cankers and internal discoloration were observed in agreement with the inoculation points (Figures 7 and 8). All the isolates induced similar lesions on the inoculated host species and no difference in length of the resulting lesions was observed among the inoculated isolates after 1 month. Otherwise, after 3 months infection resulted in apical dieback of the mango plants when inoculated with a *D. baccae* isolate. The other isolates killed the plants after more than 6 months. Control plants showed no symptoms. The fungi were re-isolated from some of the artificially inoculated plants in order to fulfill Koch's postulates.



Figure 7. Internal discoloration of woody cankers in mango plants cv. Kensington Pride 30 days after inoculation with (a) *Botryosphaeria dothidea*; (b) *Lasiodiplodia theobromae*; (c) *Diaporthe foeniculina*; (d) *D. baccae*.

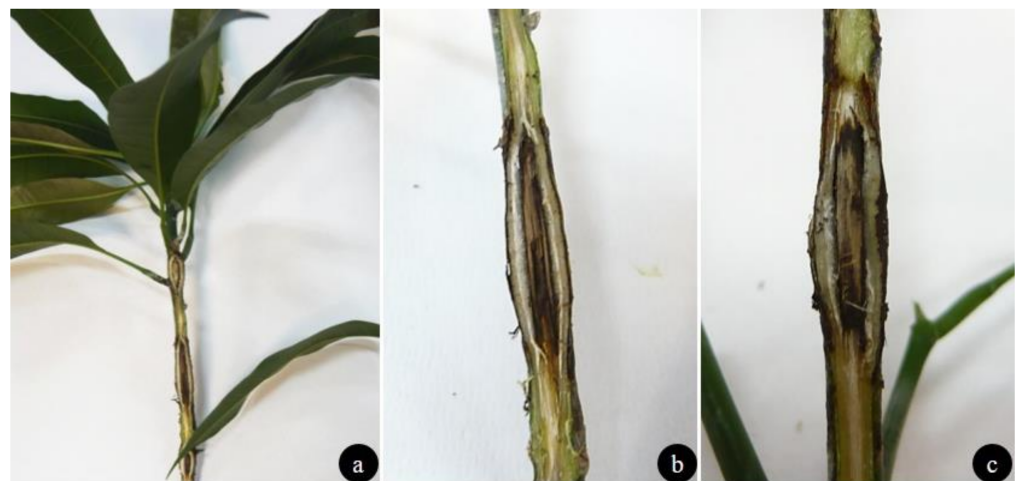


Figure 8. Woody cankers on litchi plants cv. Way Chee 30 days after inoculation with (a,b) *Diaporthe rudis*; (c) *D. baccae*.

4. Discussion

This study represents the first comprehensive survey of fungi associated with woody canker and shoot blight of mango and litchi plants in Sicily (southern Italy). Several cultivars of mango such as Kent, Keitt, Sensation, Osteen, and Kensington Pride from seven orchards and Way Chee and Kwai Mai Pink litchi from one orchard were inspected and sampled. Five different fungal species belonging to Botryosphaeriaceae and two species of Diaporthaceae were associated consistently with canker and dieback symptoms. Fifty-six fungal isolates were identified by morphological characterization and multi-locus phylogenies using ITS, *tef1*, and *tub2*. The discovered species included *N. parvum*, *B. dothidea*, *L. theobromae*, *D. baccae*, and *D. foeniculina* on mango and *D. rudis* and *D. foeniculina* on litchi. The pathogenicity of all Botryosphaeriaceae and Diaporthaceae species found for the first time in this study was confirmed through controlled inoculation experiments on mango and litchi plants. All isolates tested were able to cause cankers and necrotic lesions showing similar pathogenic behavior. Only *D. baccae* proved to be more aggressive killing the inoculated plants of mango after 3 months. To our knowledge, *B. dothidea*, *L. theobromae*,

D. baccae, and *D. foeniculina* as well as *D. rudis* and *D. foeniculina* are reported here for the first time on mango and litchi plants in Italy.

Diaporthaceae and Botryosphaeriaceae were already present in Italy and they were reported on other host species. *Botryosphaeria dothidea* has occurred on different species such as sycamore, red oak and English oak [32], grapevine [33,34], red eucalyptus in Sardinia [35], pistachio and *Ficus microcarpa* in Sicily [36,37]; *D. baccae*, *D. rudis*, and *N. parvum* have been reported on several *Citrus* spp. and on *Vaccinium corymbosum* [38–40]; *D. foeniculina* and *N. parvum* have also been reported on avocado and citrus [39,41,42]; *L. theobromae* was reported on grapevine and avocado [43,44]; *N. parvum* was also reported affecting *Ficus carica* [45], and *D. rudis* on grapes [46].

Some Botryosphaeriaceae species obtained in this study, including *B. dothidea* and *L. theobromae* were reported as causal agents of fruit rot and the decline of mango in Florida, Brazil, and Australia [47–52]. Otherwise, dieback, decline, and stem-end rot of fruit caused by *N. parvum*, the main species found in this study, were already reported in Italy [7,41]. Botryosphaeriaceae include endophytes that infect the healthy tissues of woody plants and remain dormant until the occurrence of stress conditions [52–55]. Among these, environmental conditions such as temperature, rainfall, and wind could be involved in the development of infections increasing the stress on plants. Some studies have reported that climatic change affects the pathogen, the host, and the interaction between them [56,57]. Concerning Botryosphaeriaceae, *B. dothidea* was reported as a causal agent of serious infections on weak, stressed, or off-site trees [58]. Increased incidence and symptom severity of *B. dothidea* on apple trees have been related to water stress and winter injury in the eastern USA [59]. The symptom severity of diplodia shoot blight, caused by *Diplodia sapinea*, has consistently been associated with water stress [60–62].

Diaporthe species include endophytes associated with hosts present in temperate and tropical regions [63] as well as opportunistic plant pathogens. On mango, *D. arecae*, *D. perseae*, and *D. pascoei* have been reported in Malaysia, *D. ueckerae* and *D. pseudomangiferae* have been reported in Puerto Rico and other two species in Japan [64–66]. Several *Diaporthe* species are well-established in Europe and cause diseases of different crops [38,39,41,67]. Nevertheless, this study represents the first record of woody canker and shoot blight caused by *D. baccae* and *D. foeniculina* on mango. On litchi, *Botryosphaeria* sp., *Diplodia* sp., and *Phomopsis* sp. were reported as causal agents of stem canker and dieback in Florida [68], but this study represents the first report worldwide of *D. foeniculina* and *D. rudis* on this host.

The occurrence of these infections in the field compromises plant growth as well as fruit quality. Indeed, Diaporthaceae and Botryosphaeriaceae have also been reported as causal agents of fruit stem-end rot, one of the most important diseases of fruit [41,50,64,66]. Therefore, these pathogens could also be a severe limiting factor for the production and export of fruit. Moreover, the pathogens' recovery in this study confirms their high prevalence in Italy and the high infection risk for additional susceptible crops.

Since Sicily is not self-sufficient for the production of seedlings, young plants are imported from abroad, so the introduction of these pathogens in our areas could be due to the movement of infected plants from other countries. Moreover, the contamination of the material could occur during any of the production steps. For this reason, the use of certified propagative material and the elimination of dead wood or pruning residues are necessary to reduce potential inoculum sources, as well as following hygienic practices in order to avoid the inoculum spread.

Since these fungal infections could represent a major threat to the emerging tropical fruit crop cultivation in Sicily, it is necessary to conduct further research aimed at identifying the main stress factors influencing disease development and the potential damage to fruit, and to develop sustainable and effective strategies for disease management.

Author Contributions: D.A. performed the experiments and wrote the original manuscript; V.G. performed the experiments and the phylogenetic analysis; M.B.C., G.R.L. and F.E. performed the molecular analysis; G.P. (Giancarlo Perrone) performed the phylogenetic analysis; and G.P. (Giancarlo Polizzi) critically revised the manuscript. All authors have read and agreed to the published version of the manuscript.

Funding: Programma Ricerca di Ateneo MEDIT-ECO UNICT 2020–2022 Linea 2-University of Catania (Italy).

Institutional Review Board Statement: Not applicable.

Informed Consent Statement: Not applicable.

Data Availability Statement: The data presented in this study are available on request from the corresponding author.

Conflicts of Interest: The authors declare no conflict of interest.

References

- Maldonado-Celis, M.E.; Yahia, E.M.; Bedoya, R.; Landázuri, P.; Loango, N.; Aguillón, J.; Restrepo, B.; Guerrero Ospina, J.C. Chemical Composition of Mango (*Mangifera indica* L.) Fruit: Nutritional and Phytochemical Compounds. *Front. Plant Sci.* **2019**, *10*, 1073. [[CrossRef](#)] [[PubMed](#)]
- Ara, R.; Motalab, M.; Uddin, M.N.; Fakhruddin, A.N.M.; Saha, B.K. Nutritional evaluation of different mango varieties available in Bangladesh. *Int. Food Res. J.* **2014**, *21*, 2169–2174.
- Zhao, L.; Wang, K.; Wang, K.; Zhu, J.; Hu, Z. Nutrient components, health benefits, and safety of litchi (*Litchi chinensis* Sonn.): A review. *Compr. Rev. Food. Sci. F.* **2020**, *19*, 2139–2163. [[CrossRef](#)]
- Marçal, S.; Pintado, M. Mango peels as food ingredient/additive: Nutritional value, processing, safety and applications. *Trends Food Sci. Technol.* **2021**, *114*, 472–489. [[CrossRef](#)]
- FAO. *Major Tropical Fruits—Statistical Compendium 2017*; Food and Agriculture Organization of the United Nations: Rome, Italy, 2019; p. 38.
- Farina, V.; D’Asaro, A.; Mazzaglia, A.; Gianguzzi, G.; Palazzolo, E. Chemical-physical and nutritional characteristics of mature-green and mature-ripe ‘Kensington Pride’ mango fruit cultivated in Mediterranean area during cold storage. *Fruits* **2017**, *72*, 221–229. [[CrossRef](#)]
- Ismail, A.M.; Cirvilleri, G.; Lombard, L.; Crous, P.W.; Groenewald, J.Z.; Polizzi, G. Characterisation of *Neofusicoccum* species causing mango dieback in Italy. *J. Plant Pathol.* **2013**, *95*, 549–557.
- Ismail, A.M.; Cirvilleri, G.; Yaseen, T.; Epifani, F.; Perrone, G.; Polizzi, G. Characterisation of *Colletotrichum* species causing anthracnose disease of mango in Italy. *J. Plant Pathol.* **2015**, *97*, 167–171.
- Ismail, A.M.; Cirvilleri, G.; Polizzi, G. Characterisation and pathogenicity of *Pestalotiopsis uvicola* and *Pestalotiopsis clavispora* causing grey leaf spot of mango (*Mangifera indica* L.) in Italy. *Eur. J. Plant Pathol.* **2013**, *135*, 619–625. [[CrossRef](#)]
- Ahmed, Y.; Cirvilleri, G.; D’Onghia, A.M.; Yaseen, T. First report of Verticillium wilt of Mango (*Mangifera indica*) caused by *Verticillium dahliae* in Italy. *Plant Dis.* **2014**, *98*, 1156. [[CrossRef](#)]
- Trantas, E.A.; Mpalantinaki, E.; Pagoulatou, M.; Markakis, E.; Sarris, P.F.; Ververidis, F.; Goumas, D.E. First report of bacterial apical necrosis of mango caused by *Pseudomonas syringae* pv. *syringae* in Greece. *Plant Dis.* **2017**, *101*, 1541. [[CrossRef](#)]
- Torta, L.; Lo Piccolo, S.; Burruano, S.; Lo Cantore, P.; Iacobellis, N.S. Necrosi apicale del mango (*Mangifera indica* L.) causata da *Pseudomonas syringae* pv. *syringae* van Hall in Sicilia. *Info. Fitopat.* **2003**, *11*, 44–46.
- Aiello, A.; Ferrante, P.; Vitale, A.; Polizzi, G.; Scortichini, M.; Cirvilleri, G. Characterisation of *Pseudomonas syringae* pv. *syringae* isolated from mango in Sicily and occurrence of copper-resistant strains. *J. Plant Pathol.* **2015**, *97*, 273–282.
- Cazorla, F.M.; Tores, J.A.; Olalla, L.; Perez-García, A.; Farre, J.M.; de Vicente, A. Bacterial apical necrosis of mango in southern Spain: A disease caused by *Pseudomonas syringae* pv. *syringae*. *Phytopathology* **1998**, *88*, 614–620. [[CrossRef](#)] [[PubMed](#)]
- Huang, X.; Subhadrabandhu, S.; Mitra, S.K.; Ben-Arie, R.; Stern, R.A. Origin, History, Production and Processing. In *Litchi and Longan. Botany, Production and Uses*; Menzel, C.M., Waite, G.K., Eds.; CABI Publishing: Wallingford, UK, 2005; pp. 1–23.
- Ye, W.; Wang, Y.; Shen, D.; Li, D.; Pu, T.; Jiang, Z.; Zhang, Z.; Zheng, X.; Tyler, B.M.; Wang, Y. Sequencing of the litchi downy blight pathogen reveals it is a *Phytophthora* species with downy mildew-like characteristics. *Mol. Plant-Microbe Interact.* **2016**, *29*, 11. [[CrossRef](#)] [[PubMed](#)]
- Ling, J.F.; Song, X.B.; Xi, P.G.; Cheng, B.P.; Cui, Y.P.; Chen, X.; Peng, A.T.; Jiang, Z.D.; Zhang, L.H. Identification of *Colletotrichum siamense* causing litchi pepper spot disease in mainland China. *Plant Pathol.* **2019**, *68*, 1533–1542. [[CrossRef](#)]
- Anderson, J.M.; Aitken, E.A.B.; Dann, E.K.; Coates, L.M. Morphological and molecular diversity of *Colletotrichum* spp. causing pepper spot and anthracnose of lychee (*Litchi chinensis*) in Australia. *Plant Pathol.* **2013**, *62*, 279–288. [[CrossRef](#)]
- Kumar, V.; Anal, A.K.D.; Rai, S.; Nath, V. Leaf, panicle and fruit blight of litchi (*Litchi chinensis*) caused by *Alternaria alternata* in Bihar state, India. *Can. J. Plant Pathol.* **2018**, *40*, 84–89. [[CrossRef](#)]

20. White, T.J.; Bruns, T.; Lee, S.; Taylor, J.W. Amplification and direct sequencing of fungal ribosomal RNA genes for phylogenetics. In *PCR Protocols: A Guide to Methods and Applications*; Innis, M.A., Gelfand, D.H., Sninsky, J.J., White, T.J., Eds.; Academic Press: San Diego, CA, USA, 1990; pp. 315–322.
21. Carbone, I.; Kohn, L.M. A method for designing primer sets for speciation studies in filamentous ascomycetes. *Mycologia* **1999**, *91*, 553–556. [[CrossRef](#)]
22. Glass, N.L.; Donaldson, G.C. Development of primer sets designed for use with the PCR to amplify conserved genes from filamentous ascomycetes. *Appl. Environ. Microb.* **1995**, *61*, 1323–1330. [[CrossRef](#)]
23. Kumar, S.; Stecher, G.; Li, M.; Niyaz, C.; Tamura, K. MEGA X: Molecular evolutionary genetics analysis across computing platforms. *Mol. Biol. Evol.* **2018**, *35*, 1547–1549. [[CrossRef](#)]
24. Katoh, K.; Standley, D.M. MAFFT multiple sequence alignment software version 7: Improvements in performance and usability. *Mol. Biol. Evol.* **2013**, *30*, 772–780. [[CrossRef](#)] [[PubMed](#)]
25. Kumar, S.; Stecher, G.; Tamura, K. MEGA7: Molecular Evolutionary Genetics Analysis Version 7.0 for Bigger Datasets. *Mol. Biol. Evol.* **2016**, *33*, 1870–1874. [[CrossRef](#)] [[PubMed](#)]
26. Marin-Felix, Y.; Groenewald, J.Z.; Cai, L.; Chen, Q.; Marincowitz, S.; Barnes, I.; Bensch, K.; Braun, U.; Camporesi, E.; Damm, U.; et al. Genera of phytopathogenic fungi: GOPHY 1. *Stud. Mycol.* **2017**, *86*, 99–216. [[CrossRef](#)] [[PubMed](#)]
27. Marin-Felix, Y.; Hernández-Restrepo, M.; Wingfield, M.J.; Akulov, A.; Carnegie, A.J.; Cheewangkoon, R.; Gramaje, D.; Groenewald, J.Z.; Guarnaccia, V.; Halleen, F.; et al. Genera of phytopathogenic fungi: GOPHY2. *Stud. Mycol.* **2019**, *92*, 47–133. [[CrossRef](#)] [[PubMed](#)]
28. Nylander, J.A.A. *MrModeltest v. 2. Program Distributed by the Author*; Uppsala Evolutionary Biology Centre Uppsala University: Uppsala, Sweden, 2004.
29. Ronquist, F.; Teslenko, M.; Van der Mark, P.; Ayres, D.L.; Darling, A.; Höhna, S.; Larget, B.; Liu, L.; Suchard, M.A.; Huelsenbeck, J.P. MrBayes 3.2: Efficient Bayesian phylogenetic inference and model choice across a large model space. *Systematic Biol.* **2012**, *61*, 539–542. [[CrossRef](#)] [[PubMed](#)]
30. Phillips, A.J.; Alves, A.; Abdollahzadeh, J.; Slippers, B.; Wingfield, M.J.; Groenewald, J.Z.; Crous, P.W. The Botryosphaeriaceae: Genera and species known from culture. *Stud. Mycol.* **2013**, *76*, 51–167. [[CrossRef](#)]
31. Santos, J.M.; Phillips, A.J.L. Resolving the complex of *Diaporthe* (*Phomopsis*) species occurring on *Foeniculum vulgare* in Portugal. *Fungal Divers.* **2009**, *34*, 111–125.
32. Turco, E.; Marianelli, L.; Vizzuso, C.; Ragazzi, A.; Gini, R.; Selleri, B.; Tucci, R. First report of *Botryosphaeria dothidea* on sycamore, red oak, and english oak in North western Italy. *Plant Dis.* **2006**, *90*, 1106. [[CrossRef](#)]
33. Carlucci, A.; Lops, F.; Raimondo, M.L.; Gentile, V.; Mucci, M.; Frisullo, S. The *Botryosphaeria* species from vineyards of Apulia. *Phytopathol. Mediterr.* **2009**, *48*, 180.
34. Carlucci, A.; Cibelli, F.; Lops, F.; Raimondo, M.L. Characterisation of Botryosphaeriaceae species as causal agents of trunk diseases on grapevines. *Plant Dis.* **2015**, *99*, 1678–1688. [[CrossRef](#)]
35. Deidda, A.; Buffa, F.; Linaldeddu, B.T.; Pinna, C.; Scanu, B.; Deiana, V.; Satta, A.; Franceschini, A.; Floris, I. Emerging pests and diseases threaten *Eucalyptus camaldulensis* plantations in Sardinia, Italy. *Forest* **2016**, *9*, 883–891. [[CrossRef](#)]
36. Gusella, G.; Lawrence, D.P.; Aiello, D.; Luo, Y.; Polizzi, G.; Michailides, T. Etiology of Botryosphaeria Panicle and Shoot Blight of Pistachio (*Pistacia vera*) caused by Botryosphaeriaceae in Italy. *Plant Dis.* **2021**. [[CrossRef](#)] [[PubMed](#)]
37. Fiorenza, A.; Aiello, D.; Costanzo, M.B.; Gusella, G.; Polizzi, G. A New Disease for Europe of *Ficus microcarpa* Caused by Botryosphaeriaceae Species. *Plants* **2022**, *11*, 727. [[CrossRef](#)] [[PubMed](#)]
38. Lombard, L.; Van Leeuwen, G.C.M.; Guarnaccia, V.; Polizzi, G.; Van Rijswijk, P.C.; Rosendahl, K.C.H.M.; Gabler, J.; Crous, P.W. *Diaporthe* species associated with *Vaccinium*, with specific reference to Europe. *Phytopathol. Mediterr.* **2014**, *53*, 287–299.
39. Guarnaccia, V.; Crous, P.W. Emerging citrus diseases in Europe caused by species of *Diaporthe*. *IMA Fungus* **2017**, *8*, 317–334. [[CrossRef](#)] [[PubMed](#)]
40. Guarnaccia, V.; Martino, I.; Tabone, G.; Brondino, L.; Gullino, M.L. Fungal pathogens associated with stem blight and dieback of blueberry in northern Italy. *Phytopathol. Mediterr.* **2020**, *59*, 229–245.
41. Guarnaccia, V.; Vitale, A.; Cirvilleri, G.; Aiello, D.; Susca, A.; Epifani, F.; Perrone, G.; Polizzi, G. Characterisation and pathogenicity of fungal species associated with branch cankers and stem-end rot of avocado in Italy. *Eur. J. Plant Pathol.* **2016**, *146*, 963–976. [[CrossRef](#)]
42. Bezerra, J.D.P.; Crous, P.W.; Aiello, D.; Gullino, M.L.; Polizzi, G.; Guarnaccia, V. Genetic Diversity and Pathogenicity of Botryosphaeriaceae Species Associated with Symptomatic Citrus Plants in Europe. *Plants* **2021**, *10*, 492. [[CrossRef](#)]
43. Burruano, S.; Mondello, V.; Conigliaro, G.; Alfonzo, A.; Spagnolo, A.; Mugnai, L. Grapevine decline in Italy caused by *Lasiodiplodia theobromae*. *Phytopathol. Mediterr.* **2008**, *47*, 132–136.
44. Garibaldi, A.; Bertetti, D.; Amatulli, M.T.; Cardinale, J.; Gullino, M.L. First report of postharvest fruit rot in avocado (*Persea americana*) caused by *Lasiodiplodia theobromae* in Italy. *Plant Dis.* **2012**, *96*, 460. [[CrossRef](#)]
45. Aiello, D.; Gusella, G.; Fiorenza, A.; Guarnaccia, V.; Polizzi, G. Identification of *Neofusicoccum parvum* causing Canker and Twig Blight on *Ficus carica* in Italy. *Phytopathol. Mediterr.* **2020**, *59*, 213–218. [[CrossRef](#)]
46. Lorenzini, M.; Zapparoli, G. *Diaporthe rudis* associated with berry rot of postharvest grapes in Italy. *Plant Dis.* **2019**, *103*, 1030. [[CrossRef](#)]

47. Ploetz, R.C. The major diseases of mango: Strategies and potential for sustainable management. *Acta Hort.* **2004**, *645*, 137–150. [[CrossRef](#)]
48. Ploetz, R.C.; Benschler, D.; Vázquez, A.; Colls, A.; Nagel, J.; Schaffer, B. A re-examination of mango decline in Florida. *Plant Dis.* **1996**, *80*, 664–668. [[CrossRef](#)]
49. Slippers, B.; Johnson, G.I.; Crous, P.W.; Coutinho, T.A.; Wingfield, B.D.; Wingfield, M.J. Phylogenetic and Morphological Re-Evaluation of the *Botryosphaeria* Species Causing Diseases of *Mangifera indica*. *Mycologia* **2005**, *97*, 99–110. [[CrossRef](#)]
50. Johnson, G.I. Status of mango postharvest disease management R&D: Options and solutions for the Australian mango industry. *Hortic. Aust.* **2008**, *4*, 1–130.
51. de Oliveira Costa, V.S.; Michereff, S.J.; Martins, R.B.; Gava, C.A.T.; Mizubuti, E.S.G.; Camara, M.P.S. Species of Botryosphaeriaceae associated on mango in Brazil. *Eur. J. Plant Pathol.* **2010**, *127*, 509–519. [[CrossRef](#)]
52. Sakalidis, M.L.; Ray, J.D.; Lanoiselet, V.; Hardy, G.E.S.; Burgess, T.I. Pathogenic Botryosphaeriaceae associated with *Mangifera indica* in the Kimberley Region of Western Australia. *Eur. J. Plant Pathol.* **2011**, *130*, 379–391. [[CrossRef](#)]
53. Smith, H.; Wingfield, M.J.; Crous, P.W.; Coutinho, T.A. *Sphaeropsis sapinea* and *Botryosphaeria dothidea* endophytic in *Pinus* spp. and *Eucalyptus* spp. in South Africa. *S. Afr. J. Bot.* **1996**, *62*, 86–88. [[CrossRef](#)]
54. Smith, H.; Wingfield, M.J.; Petrini, O. *Botryosphaeria dothidea* endophytic in *Eucalyptus grandis* and *Eucalyptus nitens* in South Africa. *For. Ecol. Manag.* **1996**, *89*, 189–195. [[CrossRef](#)]
55. Stanosz, G.R.; Smith, D.R.; Albers, A.J. Surveys for asymptomatic persistence of *Sphaeropsis sapinea* on or in stems of red pine seedlings from seven Great Lakes region nurseries. *For. Pathol.* **2005**, *35*, 233–244. [[CrossRef](#)]
56. Lavalle, C.; Micale, F.; Houston, T.D.; Camia, A.; Hiederer, R.; Lazar, C.; Conte, C.; Amatulli, G.; Genovese, G. Climate change in Europe. 3. Impact on agriculture and forestry. A review. *Agron. Sustain. Dev.* **2009**, *29*, 433–446. [[CrossRef](#)]
57. Sturrock, R.N.; Frankel, S.J.; Brown, A.V.; Hennon, P.E.; Kliejunas, J.T.; Lewis, K.J.; Worrall, J.J.; Woods, A.J. Climate change and forest diseases. *Plant Pathol.* **2011**, *60*, 133–149. [[CrossRef](#)]
58. Ma, Z.; Morgan, D.P.; Michailides, T.J. Effects of water stress on Botryosphaeria blight of pistachio caused by *Botryosphaeria dothidea*. *Plant Dis.* **2001**, *85*, 745–749. [[CrossRef](#)]
59. Brown, E.A.; Hendrix, F.F. Pathogenicity and histopathology of *Botryosphaeria dothidea* on apple stems. *Phytopathology* **1981**, *71*, 375–379. [[CrossRef](#)]
60. Blodgett, J.T.; Kruger, E.L.; Stanosz, G.R. Effects of moderate water stress on disease development by *Sphaeropsis sapinea* on red pine. *Phytopathology* **1997**, *87*, 422–428. [[CrossRef](#)]
61. Blodgett, J.T.; Kruger, E.L.; Stanosz, G.R. *Sphaeropsis sapinea* and water stress in a red pine plantation in central Wisconsin. *Phytopathology* **1997**, *87*, 429–434. [[CrossRef](#)]
62. Paoletti, E.; Danti, R.; Strati, S. Pre- and post-inoculation water stress affects *Sphaeropsis sapinea* canker length in *Pinus halepensis*. *For. Pathol.* **2001**, *31*, 209–218. [[CrossRef](#)]
63. Udayanga, D.; Liu, X.; McKenzie, E.; Chukeatirote, E.; Bahkali, A.; Hyde, K.D. The genus *Phomopsis*: Biology, applications, species concepts and names of common phytopathogens. *Fungal Divers.* **2011**, *50*, 189–225. [[CrossRef](#)]
64. Lim, L.; Mohd, M.H.; Zakaria, L. Identification and pathogenicity of *Diaporthe* species associated with stem-end rot of mango (*Mangifera indica* L.). *Eur. J. Plant Pathol.* **2019**, *155*, 687–696. [[CrossRef](#)]
65. Serrato-Diaz, L.M.; Rivera-Vargas, L.I.; French-Monar, R.D. First report of *Diaporthe pseudomangiferae* causing inflorescence rot, rachis canker and flower abortion on mango. *Plant Dis.* **2014**, *98*, 1004. [[CrossRef](#)] [[PubMed](#)]
66. Ajitomi, A.; Minoshima, A.; Takushi, T.; Truong, H.H.; Ooshiro, A.; Yamashiro, M.; Arasaki, C.; Hirooka, Y. First report of mango (*Mangifera indica*) stem-end rot caused by two *Diaporthe* species and their susceptibility to procymidone. *J. Gen. Plant Pathol.* **2020**, *86*, 237–244. [[CrossRef](#)]
67. Santos, J.M.; Vrandecic, K.; Cosic, J.; Duvnjak, T.; Phillips, A.J.L. Resolving the *Diaporthe* species occurring on soybean in Croatia. *Persoonia* **2011**, *27*, 9–19. [[CrossRef](#)] [[PubMed](#)]
68. Mcmillan, J.R.R.T. Diseases of *Litchi chinensis* in south Florida. *Proc. Fla. State Hort. Soc.* **1994**, *107*, 360–361.