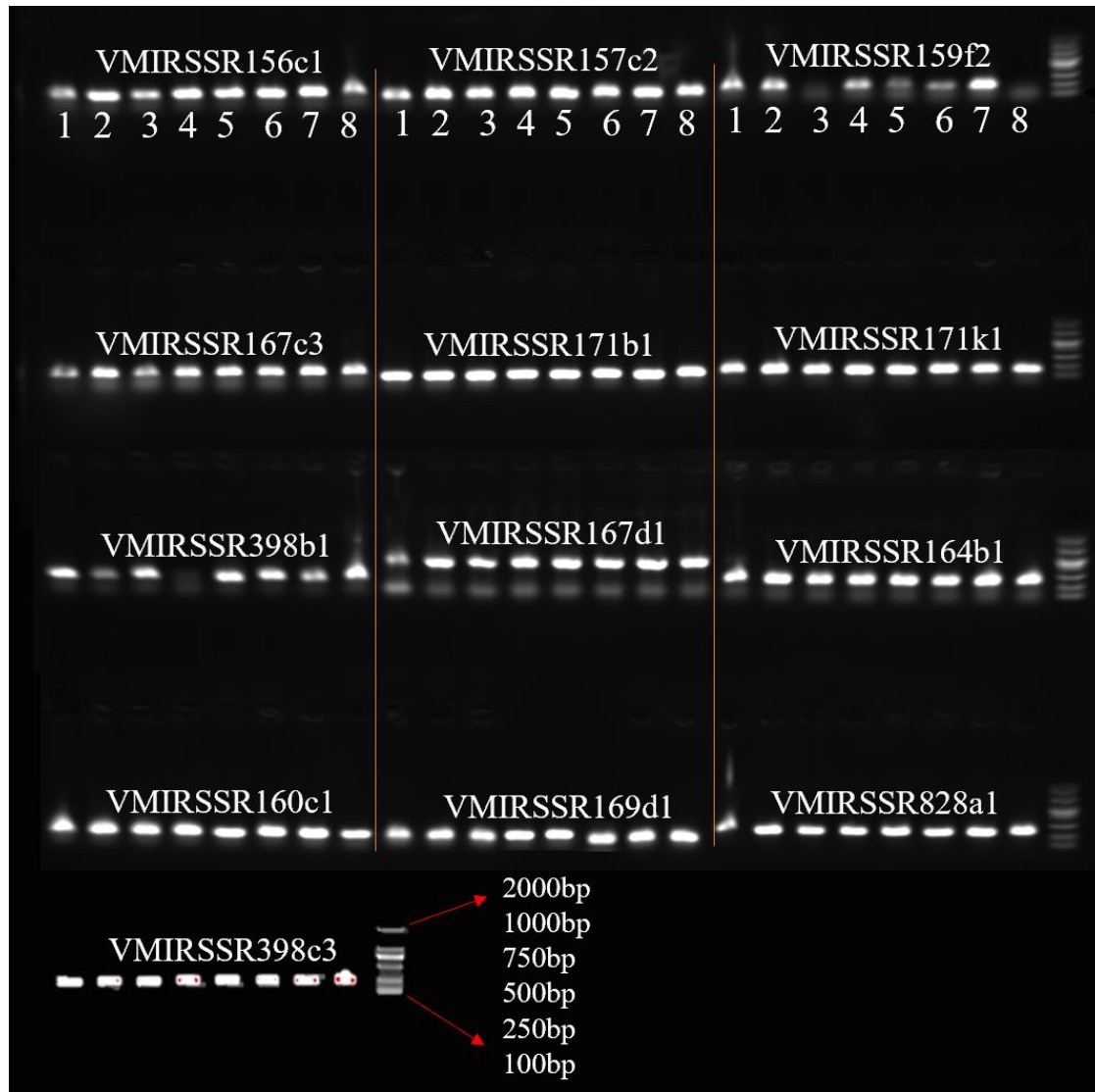


## Supplemental Fig. S1

Pri-miRNAs mediate the grape response to high temperature stress in grape tissue culture plantlets. RT-qPCR results indicated that pri-miRNA was directly involved in heat stress. CK, representing the control group (0 h); Con, representing the high temperature stress treatment time (1 h). The line chart shows that SD has three biological replicates. Values represent means  $\pm$  SE (n = 3). Significant differences were determined by a one-tailed student's t-test (\*P < 0.05; \*\*P < 0.01; \*\*\*P < 0.001).





### Supplemental Fig. S3

Gel images were showing as revealed by novel miRNA-SSR markers. Assaying eight pomegranate genotypes with the markers miRNA-SSR (VMIRSSRNAs) on 1 % metaphor gel, L, DNA mass ladder. Lanes 1–8, eight sets of grape genotypes as mentioned in materials and methods.