

SUPPLEMENTARY MATERIAL

A Novel Family of Triangular Co^{II}₂Ln^{III} and Co^{II}₂Y^{III} Clusters by the Employment of Di-2-Pyridyl Ketone

Constantinos G. Efthymiou¹, Áine Ní Fhuaráin¹, Júlia Mayans², Anastasios Tasiopoulos³, Spyros P. Perlepes⁴ and Constantina Papatriantafyllopoulou^{1,*}

¹ SSPC, Synthesis and Solid State Pharmaceutical Centre, Ireland; School of Chemistry, National University of Ireland Galway, University Road, H91 TK33, Galway, Ireland; dinosef@yahoo.com (C.E.); A.NIFHUARAIN1@nuigalway.ie (A.F.)

² Departament de Química Inorgànica i Orgànica, Secció Inorgànica and Institut de Nanociència i Nanotecnologia (IN2UB), Universitat de Barcelona, Martí i Franquès 1-11, 08028 Barcelona, Spain; julia.mayans@qi.ub.edu (J.M.)

³ Department of Chemistry, University of Cyprus, 1678 Nicosia, Cyprus; atasio@ucy.ac.cy (A.T.)

⁴ Department of Chemistry, University of Patras, 26504 Patras, Greece; perlepes@patreas.upatras.gr (S.P.P)

* Correspondence: constantina.papatriantafyllopo@nuigalway.ie; Tel.: +353-91-493462

‡ This paper is dedicated to Professor Masahiro Yamashita, a leading and inspiring Scientist on Molecular Magnetism

Table S1. Crystallographic data for complex **1**

Parameter	1
Empirical formula	C ₅₂ H ₅₂ ClCo ₂ Gd _{1.50} N _{11.50} O _{23.50}
Formula weight	1603.23
Crystal system	monoclinic
Space group	<i>C</i> 2/ <i>c</i>
<i>a</i> (Å)	12.0962(4)
<i>b</i> (Å)	21.8620(10)
<i>c</i> (Å)	52.1883(14)
β (°)	93.813(4)°
<i>V</i> (Å ³)	13770.5(9)
<i>Z</i>	8
ρ_{calc} (g cm ⁻³)	1.547
Radiation, λ (Å)	0.71073
μ (mm ⁻¹)	2.020
Temperature (K)	100(2)
Measd/independent	27084/ 11743

reflns

Parameters refined	828
GoF (on F^2)	1.052
R_1^a ($I > 2\sigma(I)$)	0.1690
wR_2^b ($I > 2\sigma(I)$)	0.2184
$(\Delta\rho)_{\max}/(\Delta\rho)_{\min}$ ($e \text{ \AA}^{-3}$)	0.233 / -0.342

^a $R_1 = \Sigma(|F_o| - |F_c|) / \Sigma(|F_o|)$.

^b $wR_2 = \{\Sigma[w(F_o^2 - F_c^2)^2] / \Sigma[w(F_o^2)^2]\}^{1/2}$.

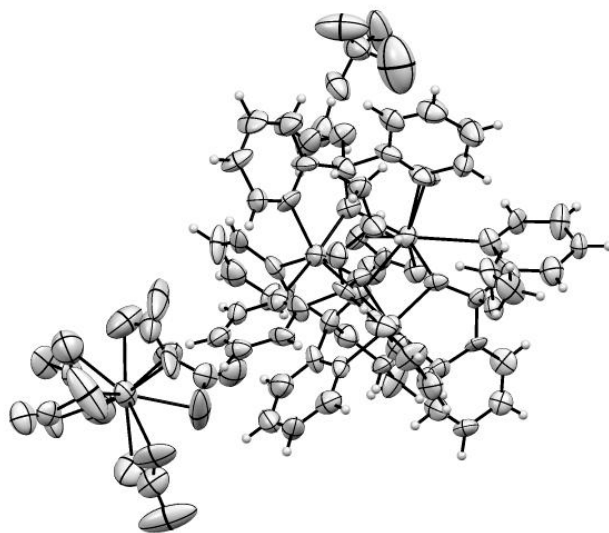


Figure S1. Representation of the ellipsoid plot for **1**.

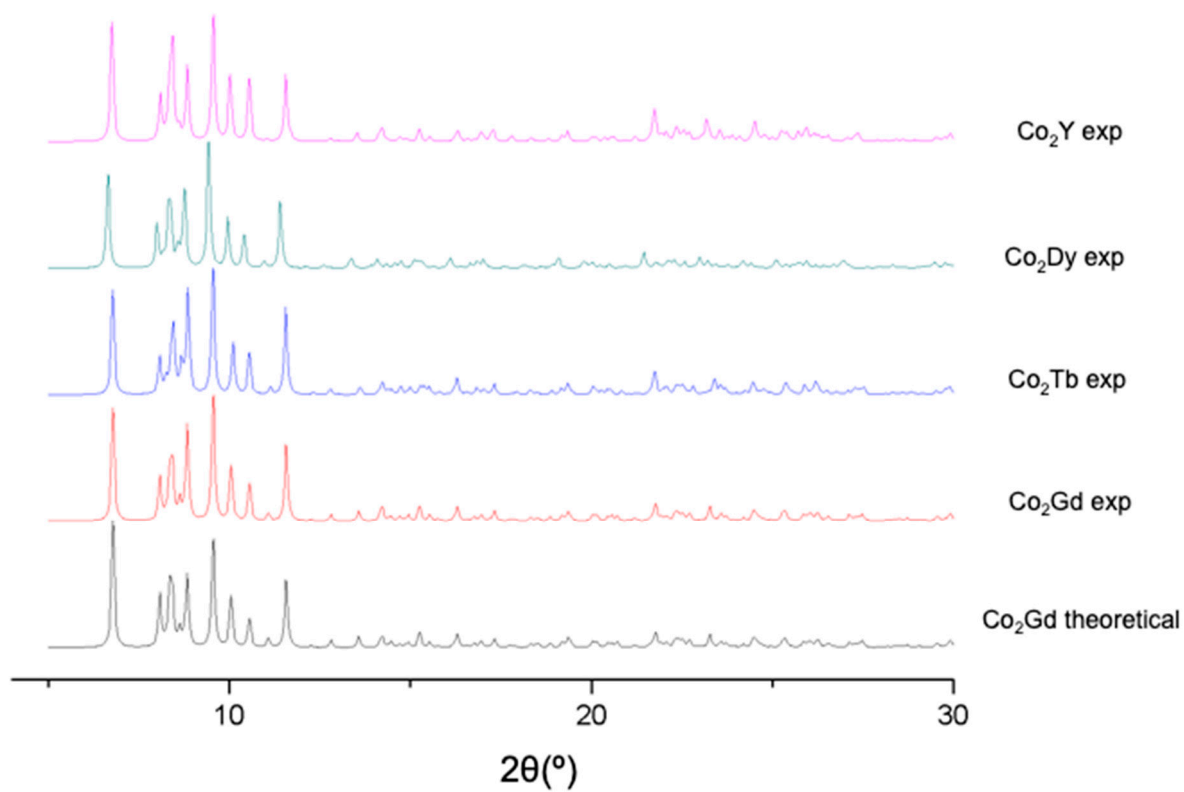


Figure S2. Theoretical and experimental pXRD patterns for **1-4**.

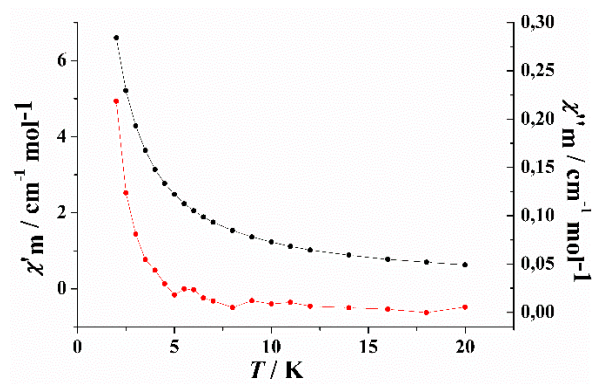


Figure S3. Representation of χ' (black line) and χ'' (red line) for **2** at 1000 Hz.