

Supplementary Material for

Water Diffusion Modulates the CEST Effect on Tb(III)-Mesoporous Silica Probes

Fabio Carniato ^{1,*}, Giuseppe Ferrauto ², Mónica Muñoz-Úbeda ¹ and Lorenzo Tei ¹

¹ Department of Science and Innovation Technology, University of Eastern Piedmont, Via T. Michel 11, 15121 Alessandria, Italy; monicamubeda@gmail.com (M.M.U.); lorenzo.tei@uniupo.it (L.T.)

² Department of Molecular Biotechnology and Health Sciences, University of Torino, Via Nizza 52, 10126 Torino, Italy; giuseppe.ferrauto@unito.it

* Correspondence: fabio.carniato@uniupo.it

Figures

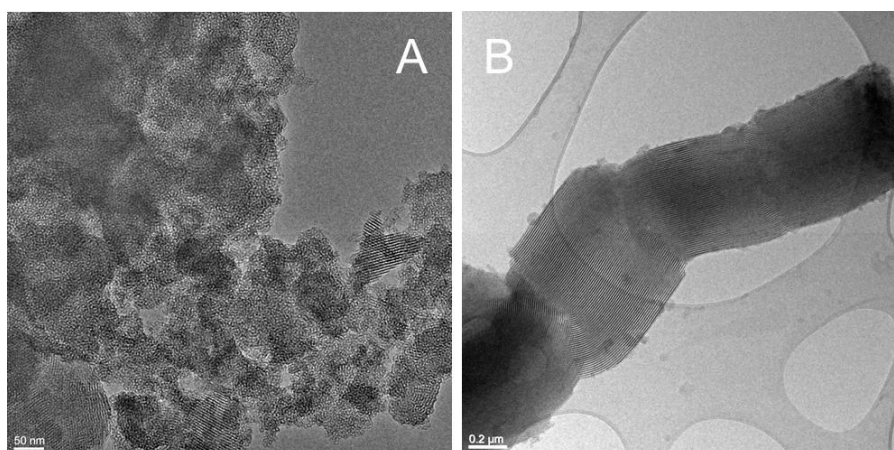


Figure S1. TEM micrographs at low magnifications of MCM-41 (A) and SBA-15 (B).

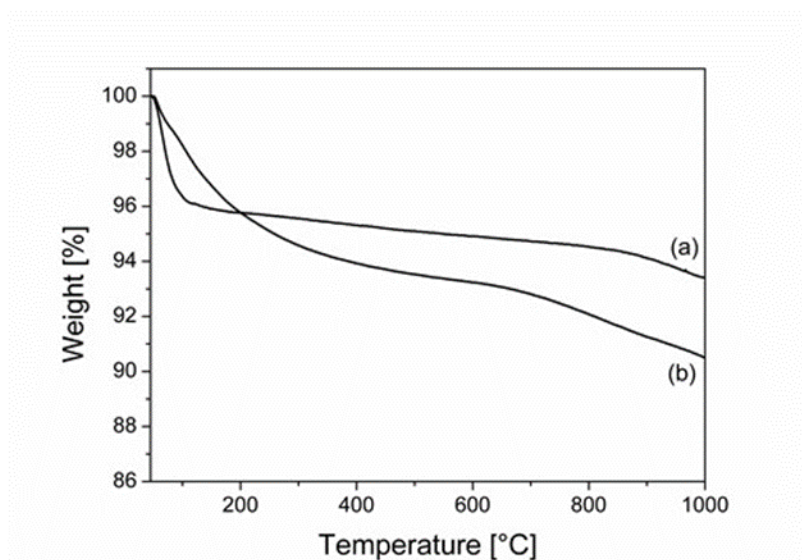


Figure S2. Thermogravimetric profiles collected under argon flow for MCM-41 (a) and SBA-15 (b).

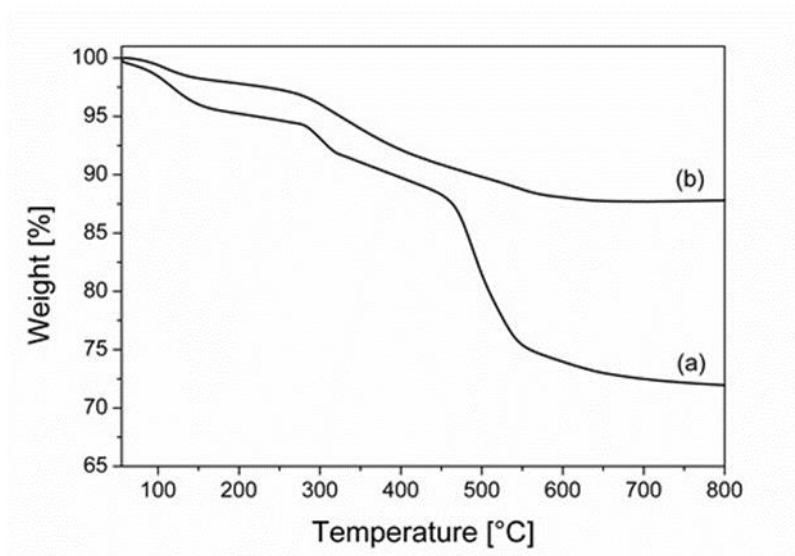


Figure S3. Thermogravimetric profiles collected under oxygen flow for NH₂-MCM-41 (a) and NH₂-SBA-15 (b).

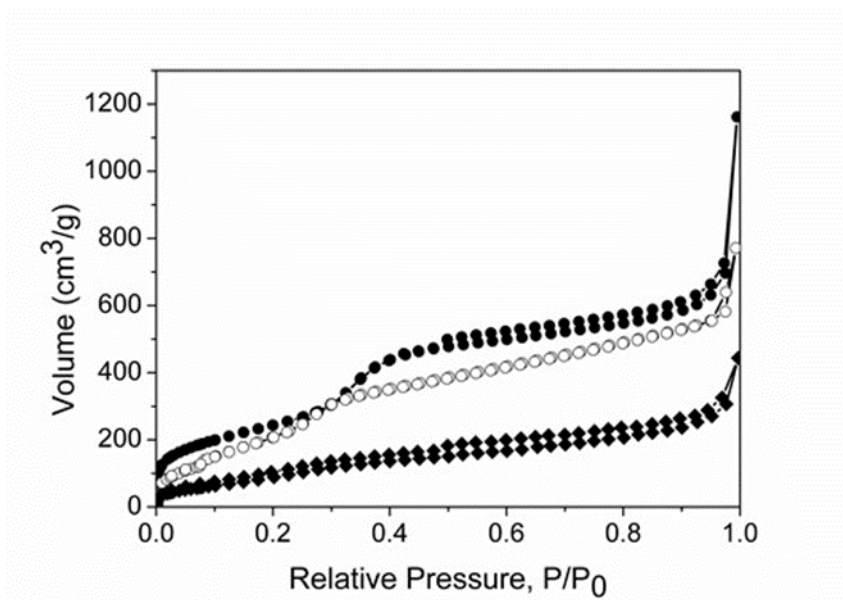


Figure S4. N₂ adsorption/desorption isotherms at 77 K of MCM-41 (-●-), NH₂-MCM-41 (-○-) and TbDO₃A-MCM-41 (-◆-).

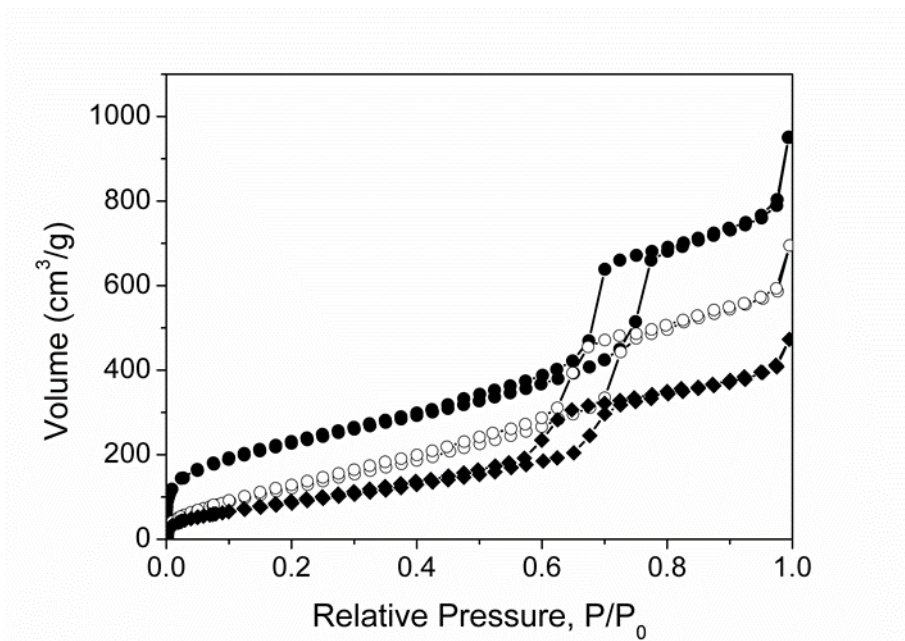


Figure S5. N₂ adsorption/desorption isotherms at 77 K of SBA-15 (●-●), NH₂-SBA-15 (○-○) and TbDO3A-SBA-15 (◆-◆).

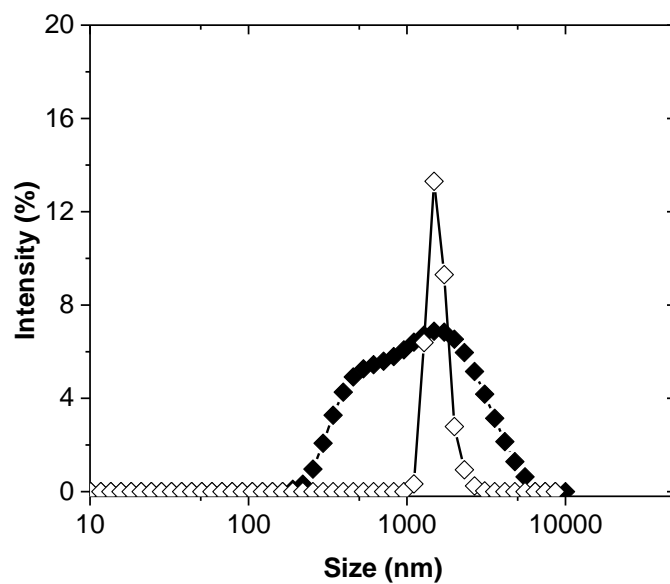


Figure S6. DLS analysis of pegylated TbDO3A-SBA-15 (◆) and TbDO3A-MCM-41 (◇) in PBS buffer solution at 298 K (20 mg/mL).

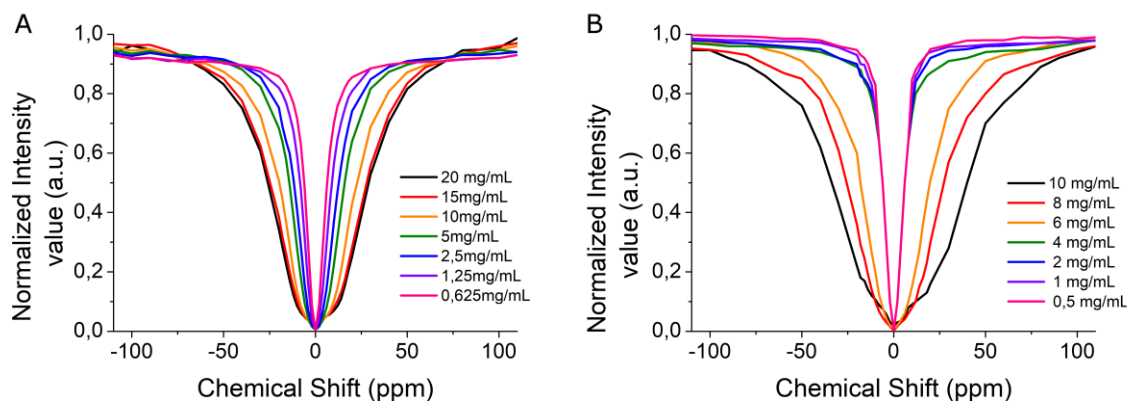


Figure S7. Z-spectra of TbDO3A-MCM-41 (A) and of TbDO3A-SBA-15 (B) at variable concentration of MSNs (pH=7.0-7.1, $B_1=24 \mu\text{T}$).

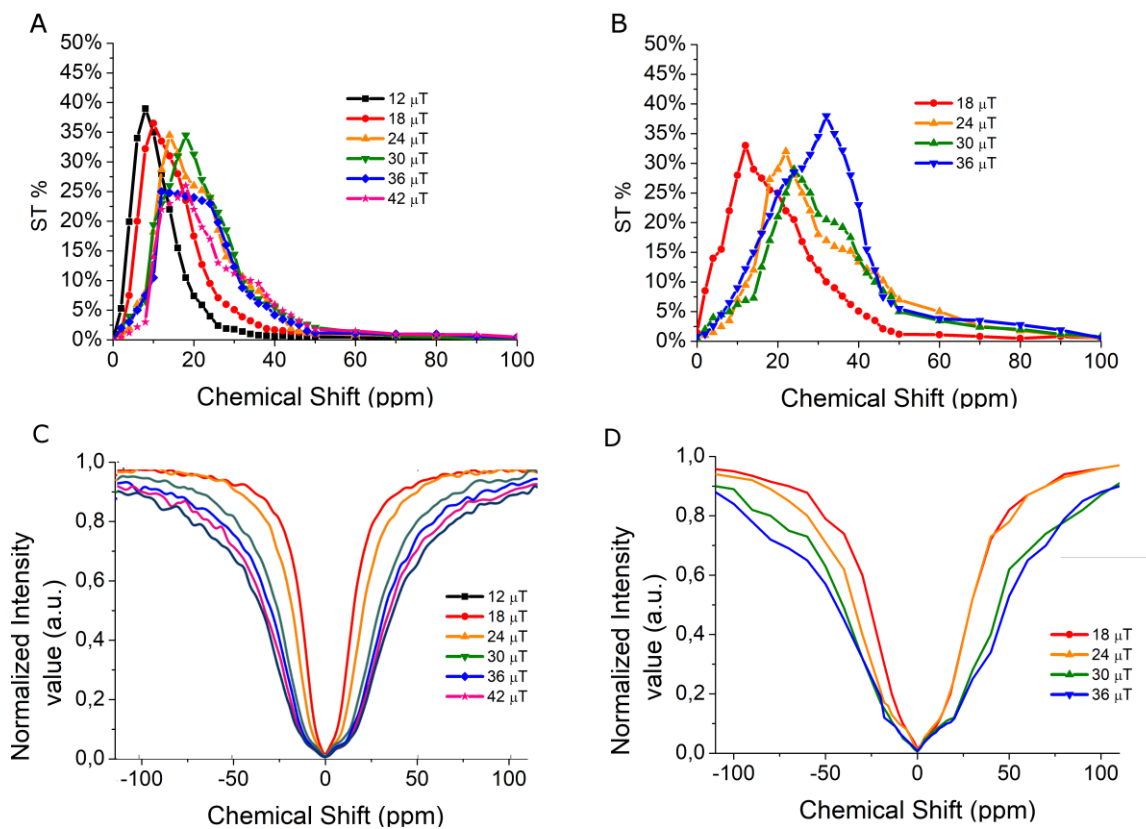


Figure S8. (A,C) ST%- and Z- spectra of TbDO3A-MCM-41 (pH=7.01, [MSNs]= 20 mg/mL). (B,D) ST%- and Z- spectra of TbDO3A-SBA-15 (pH=7.1, [MSNs]= 10 mg/mL).

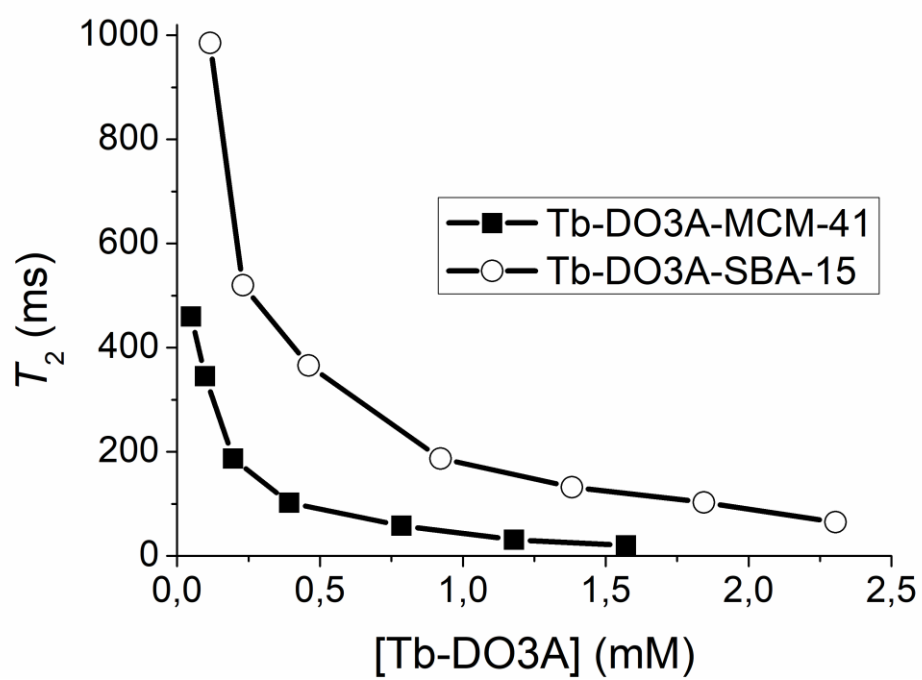


Figure S9. T_2 measurements of TbDO3A-MCM-41 and TbDO3A-SBA-15 MSNs at variable concentration.