

Figure S1. XPS spectra of the C1s photoemission lines for a) 1:0, b) 10:1, c) 5:1, d) 3:1, e) 1:1, f) 1:3, g) 1:5, h) 1:10, and i) 0:1 for the EC:EMC ratio with 1M LiPF₆. All spectra were calibrated with the contaminant hydrocarbon at 284.9 eV and background-corrected using a Shirley background.

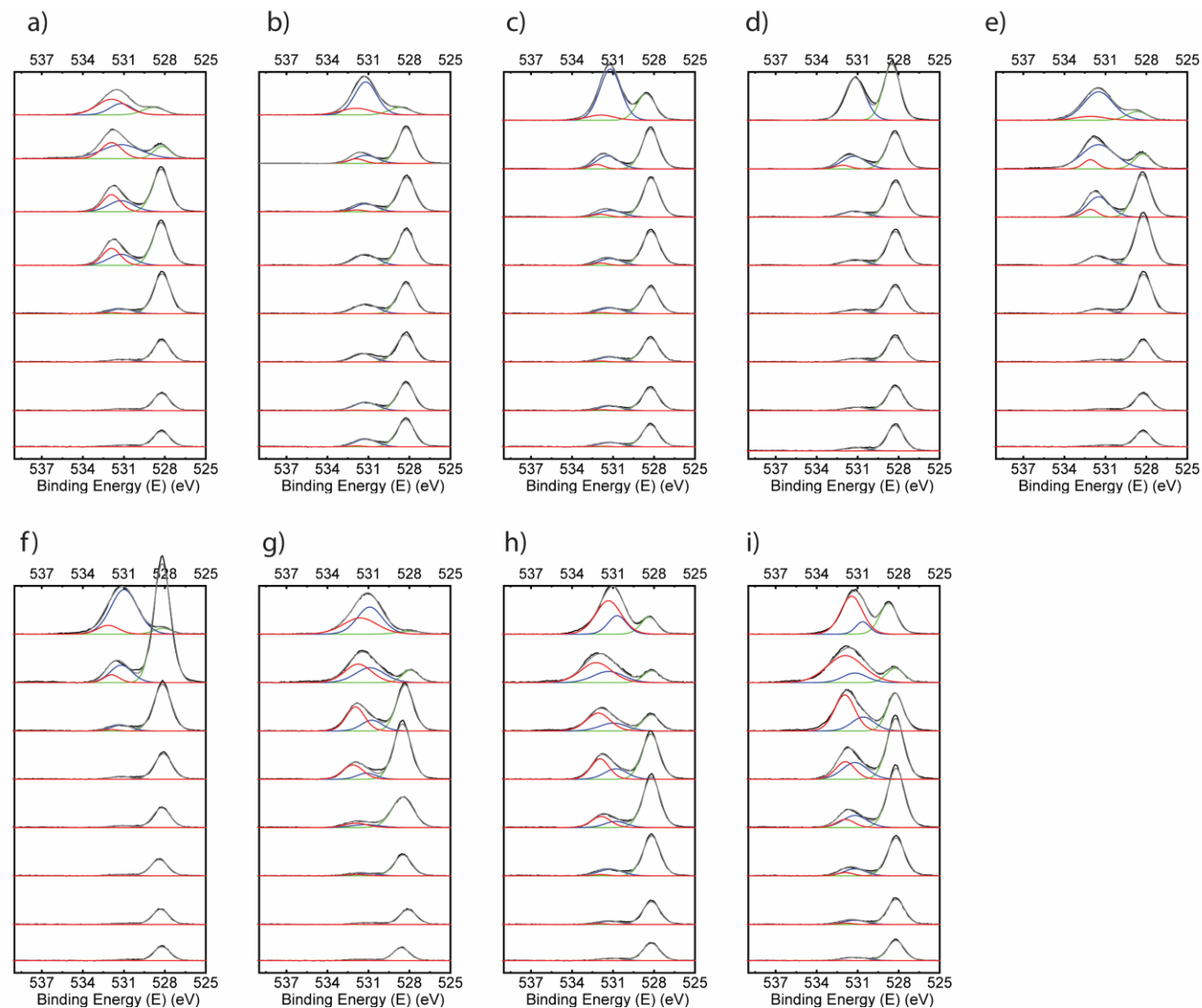


Figure S2. XPS spectra of the O1s photoemission lines for a) 1:0, b) 10:1, c) 5:1, d) 3:1, e) 1:1, f) 1:3, g) 1:5, h) 1:10, and i) 0:1 for the EC:EMC ratio with 1M LiPF₆. All spectra were calibrated with the contaminant hydrocarbon at 284.9 eV and background-corrected using a Shirley background.