

Supplementary

The Influence of $\text{Li}_4\text{Ti}_5\text{O}_{12}$ Preparation Method on Lithium-Ion Capacitor Performance

Taofeek Akintola ^{1,2}, Annadanesh Shellikeri ^{1,2}, Tawakalt Akintola ^{3,4} and Jim P. Zheng ^{1,2,5,*}

¹ Department of Electrical and Computer Engineering, Florida A&M University-Florida State University, Tallahassee, FL 32310-6046, USA; taofeek1.akintola@fam.u.edu (T.A.); ahs07e@my.fsu.edu (A.S.)

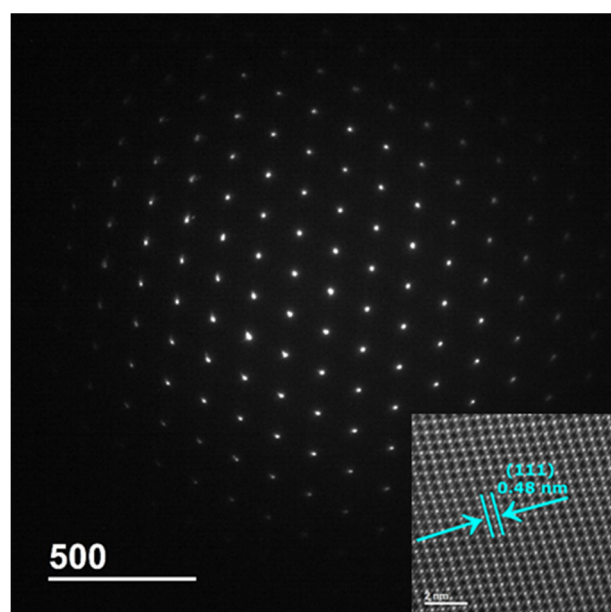
² Aero-Propulsion, Mechatronics and Energy (AME) Center, Florida State University, Tallahassee, FL 32310, USA

³ Department of Industrial and Manufacturing Engineering, Florida A&M University-Florida State University, Tallahassee, FL 32310-6046, USA; tawakalt1.akintola@fam.u.edu

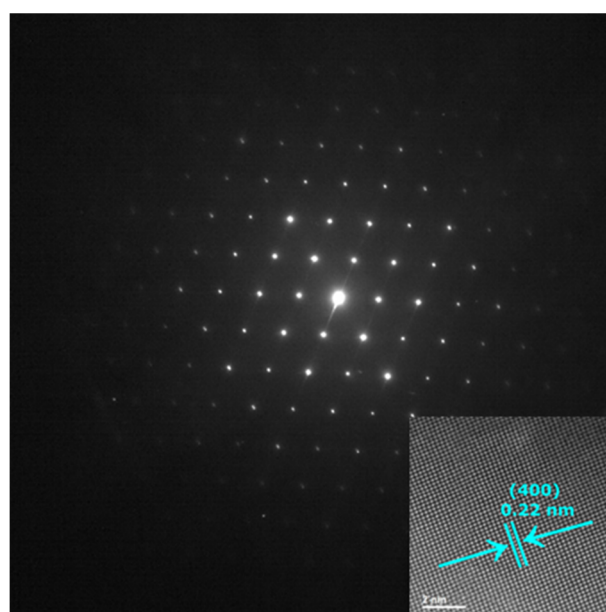
⁴ High-Performance Materials Institute, Tallahassee, FL 32310, USA

⁵ Department of Electrical Engineering, University of Buffalo, The State University of New York, Buffalo, NY 14260, USA

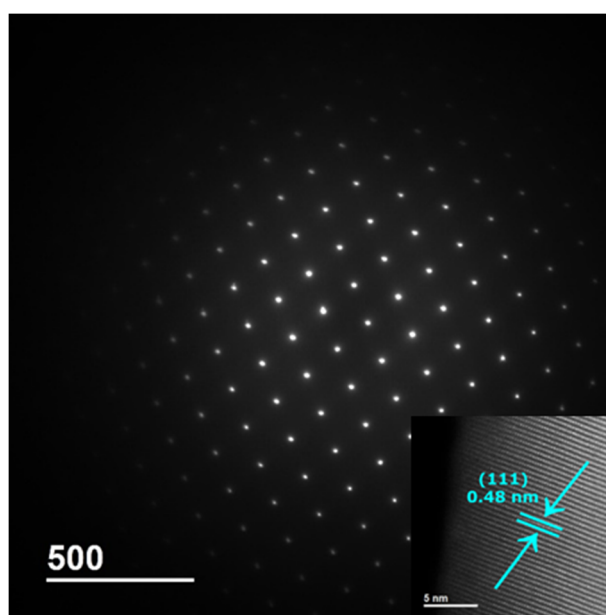
* Correspondence: jzheng@buffalo.edu



(a)

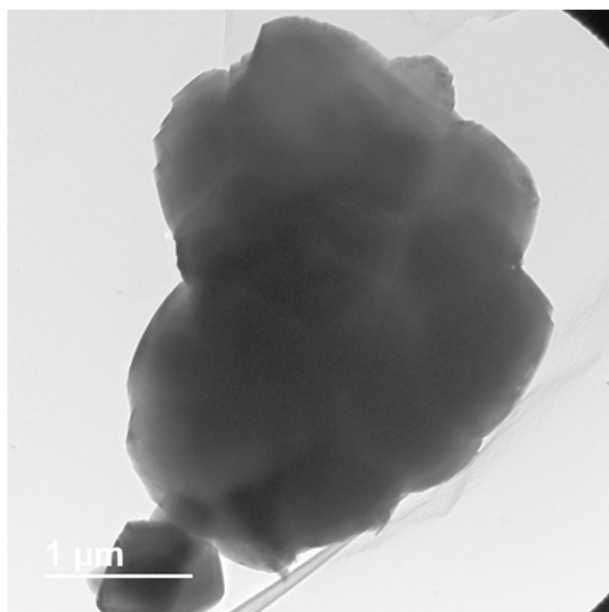


(b)

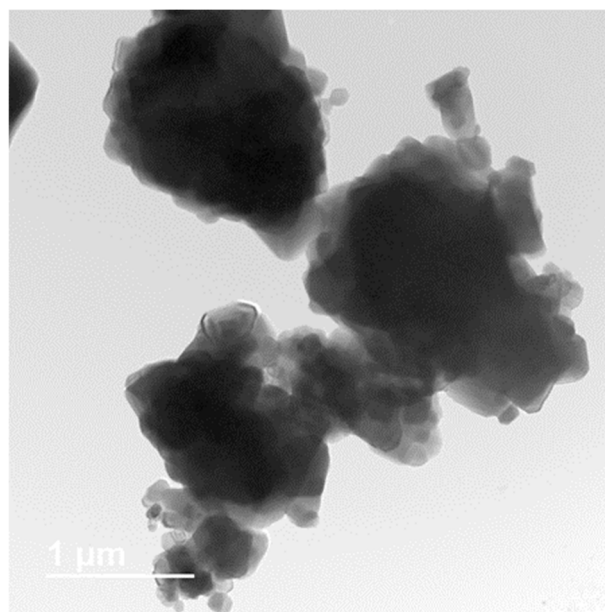


(c)

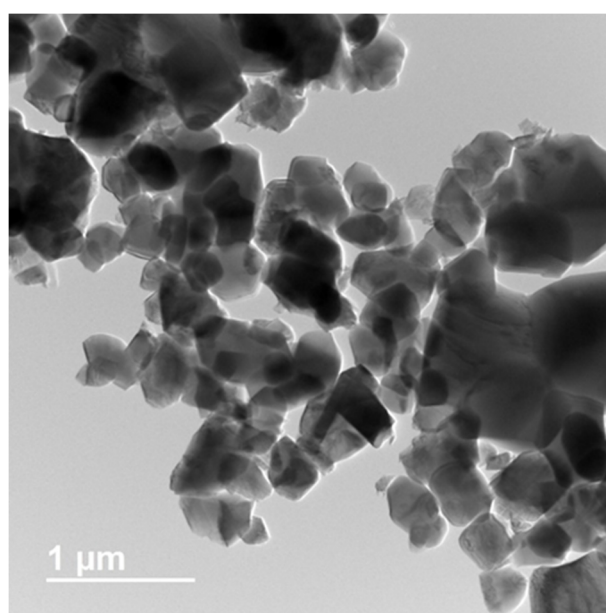
Figure S1. TEM diffraction of a single crystallite of (a) SG-NA, (b) SG-BM, and (c) SG-S samples. (inset STEM image).



(a)



(b)



(c)

Figure S2. TEM images of the synthesized LTO samples: (a) SG-NA, (b) SG-BM, and (c) SG-S.

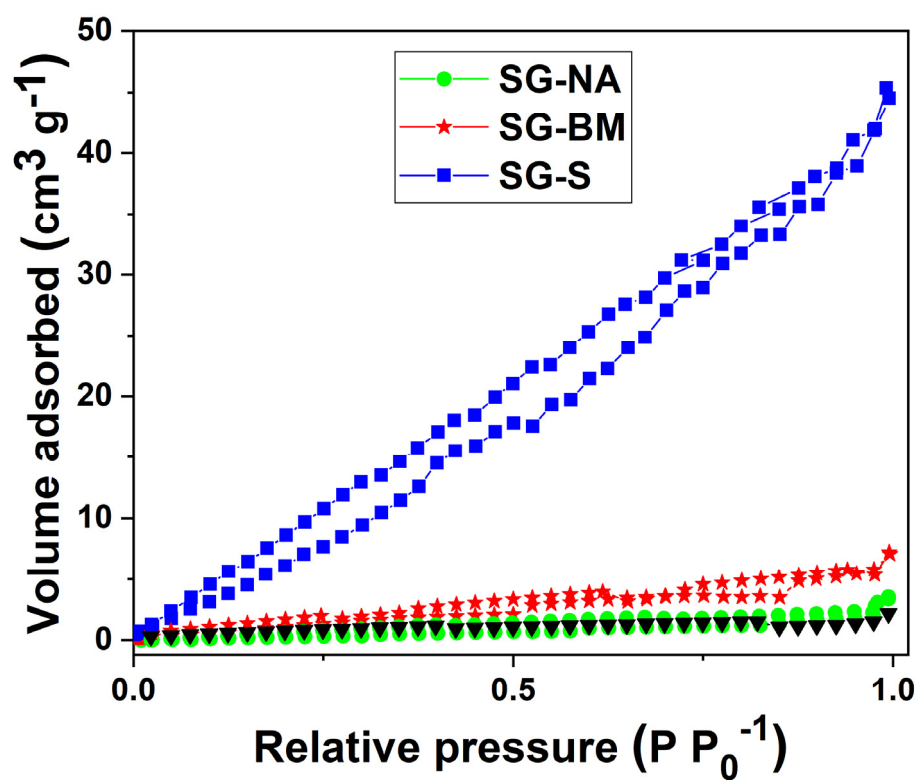


Figure S3. Nitrogen adsorption-desorption isotherm of the synthesized LTO samples.

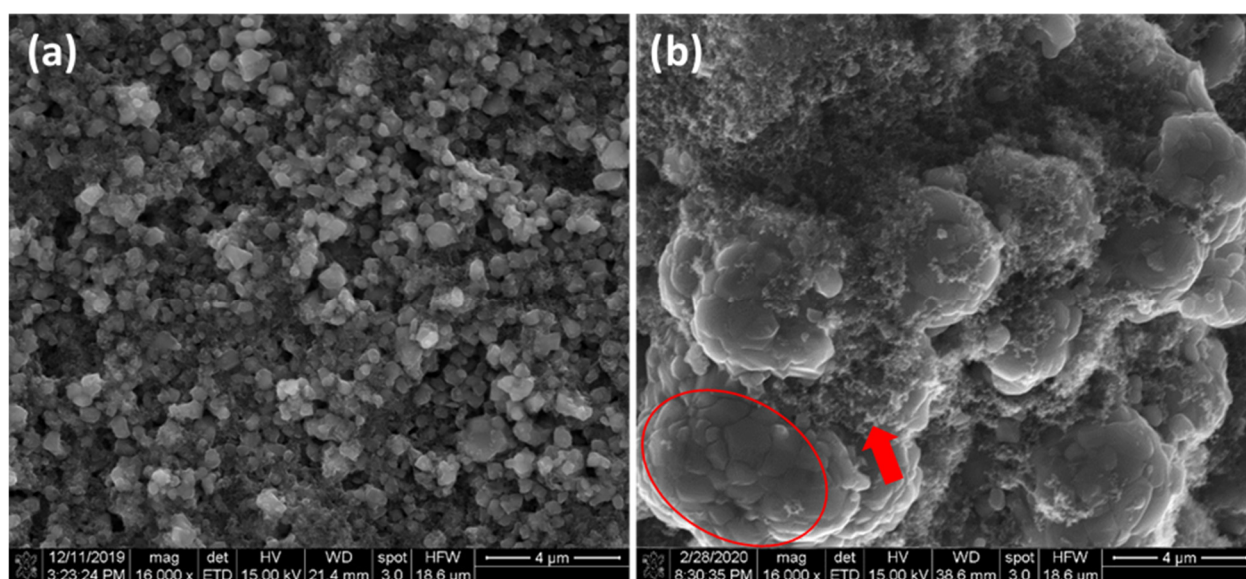


Figure S4. SEM image of the fabricated LTO anode electrodes: (a) SG-S, (b) SG-NA. Red circle indicates active material with no contact with the red arrow (carbon black).

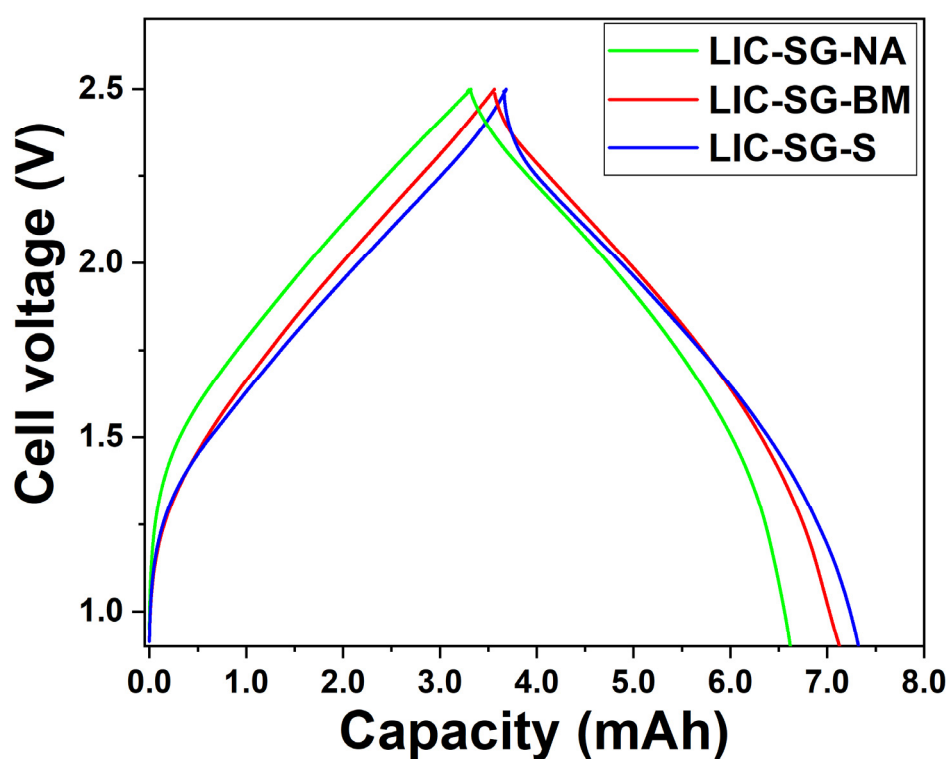


Figure S5. Voltage profile of LIC full cell balanced with a cathode to anode capacity ratio of 1.

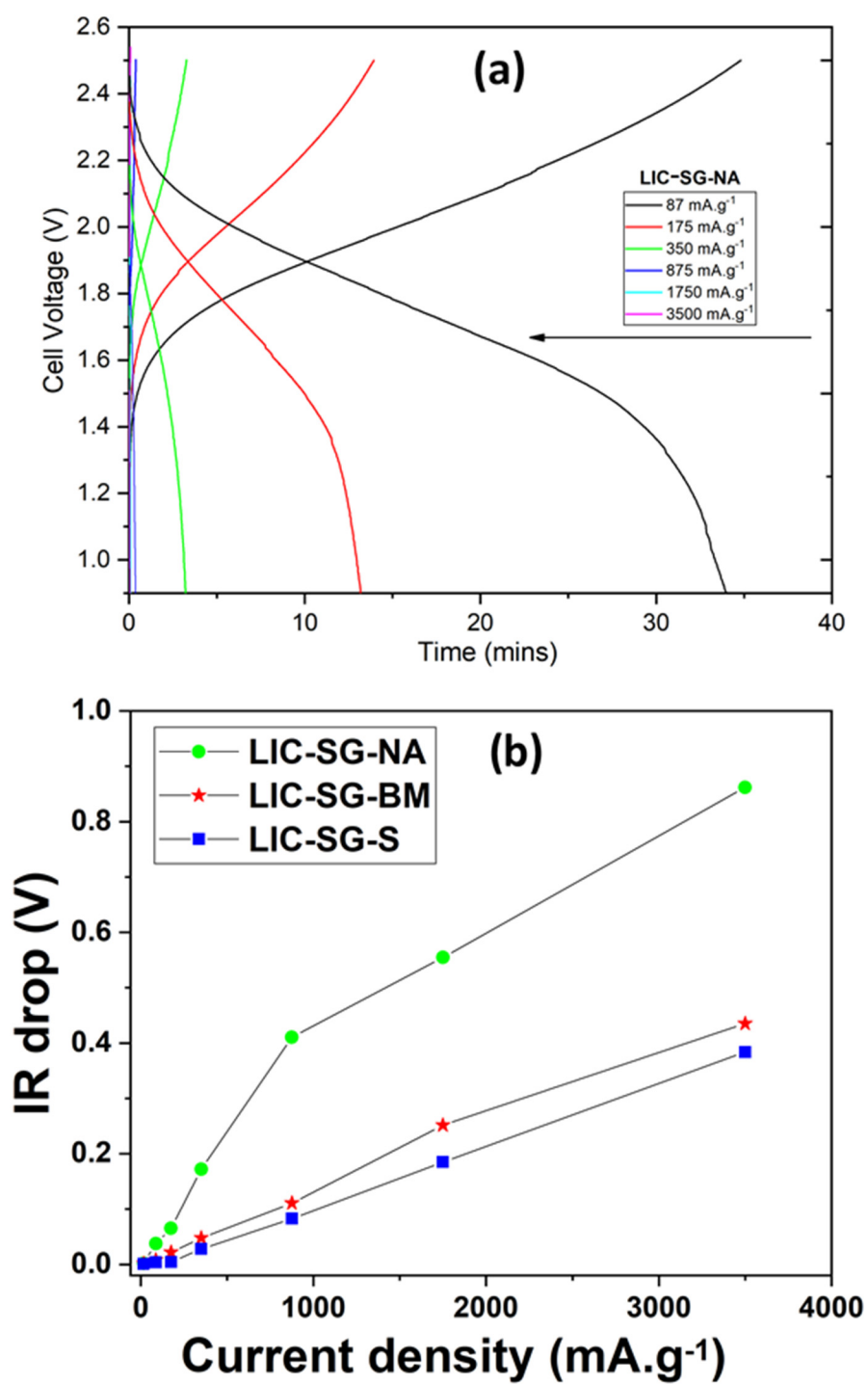


Figure S6. (a) Rate performance of the LIC cell with SG-NA anode, (b) IR drops of LIC cells.