

Supplementary material

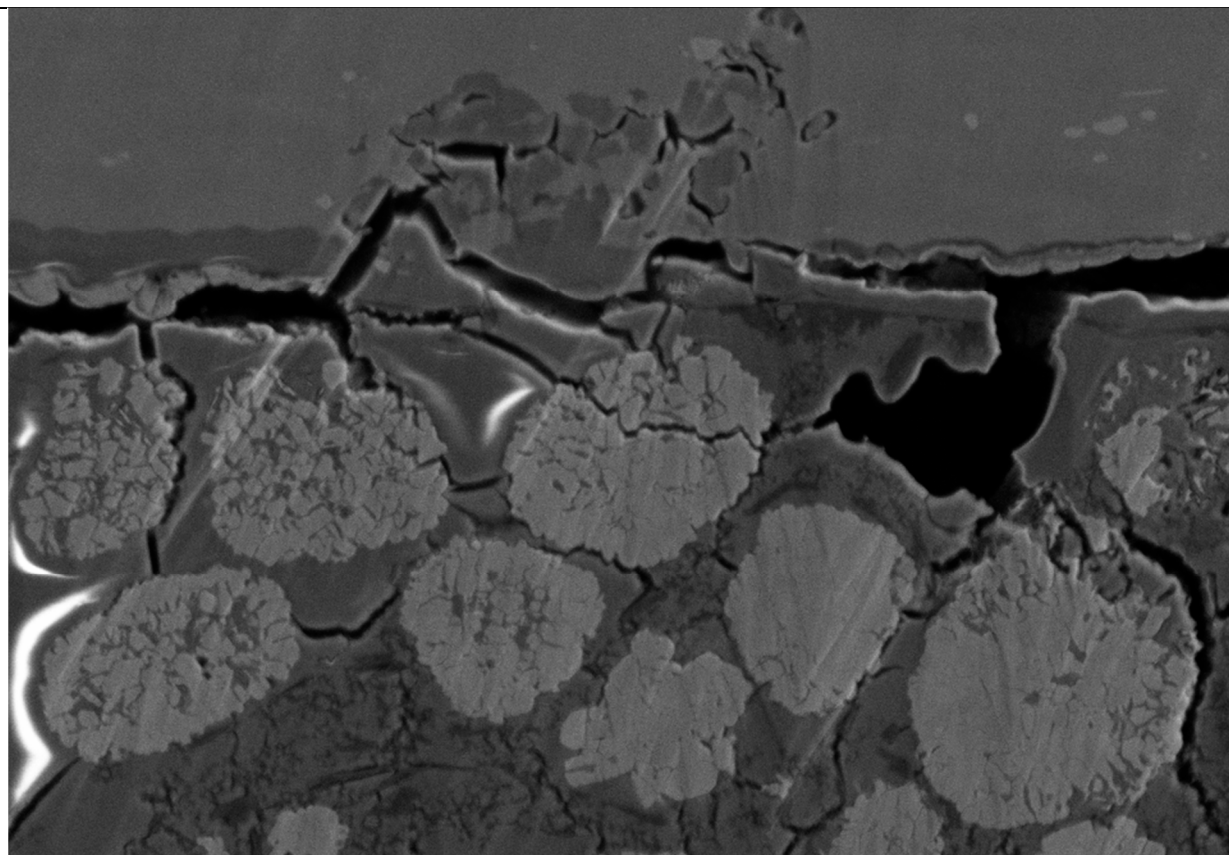


Figure S1. Current collector corrosion observed in earlier samples, promoting addition of electrolyte additive.

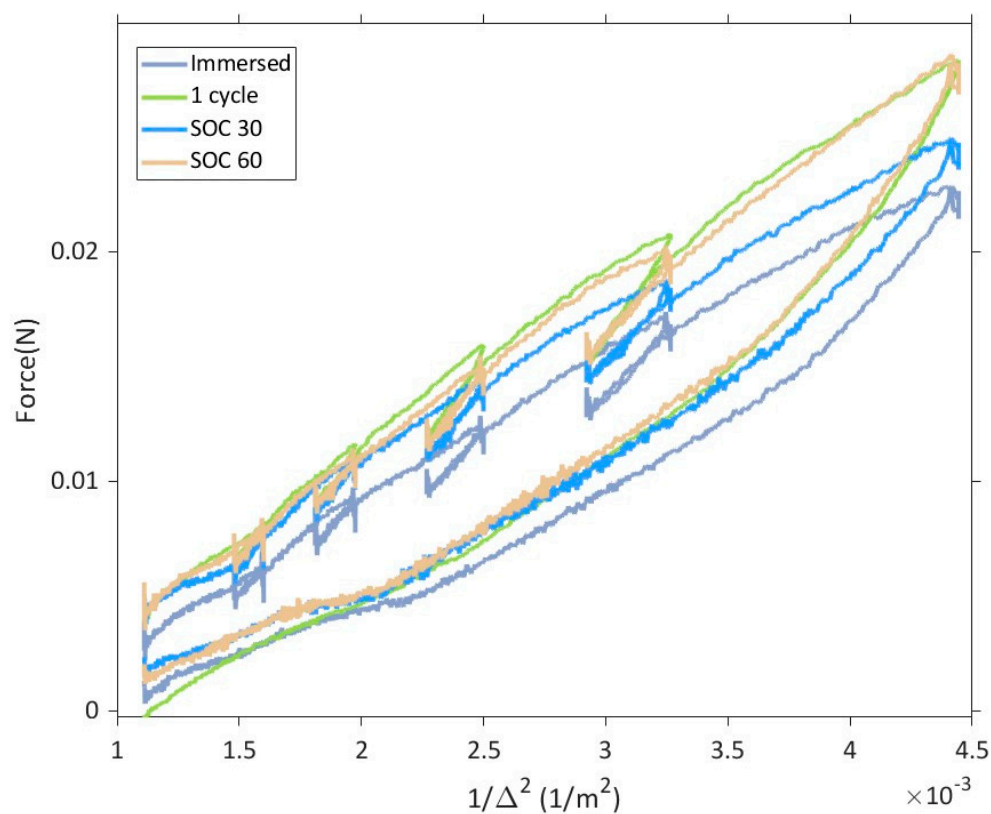
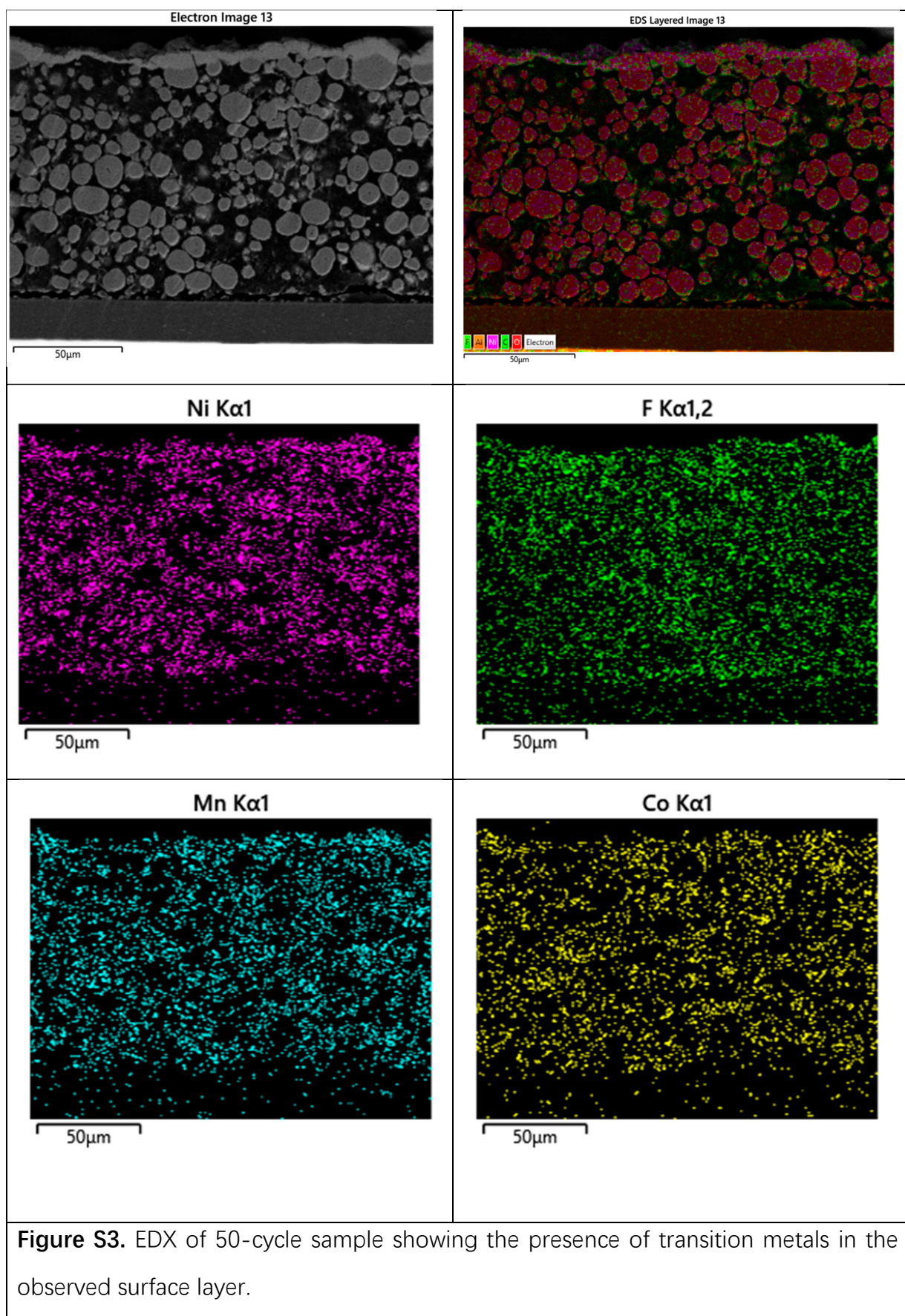


Figure S2. Force vs. $1/\Delta^2$ plot for samples subjected to different state-of-charge after the first cycle.

Specification of samples	Measured thickness of the active layer(μm) (Average of 3 samples)
Samples harvested from cells subjected to SOC 30% and dried overnight	118
Samples harvested from cells subjected to SOC 60% and dried overnight	119



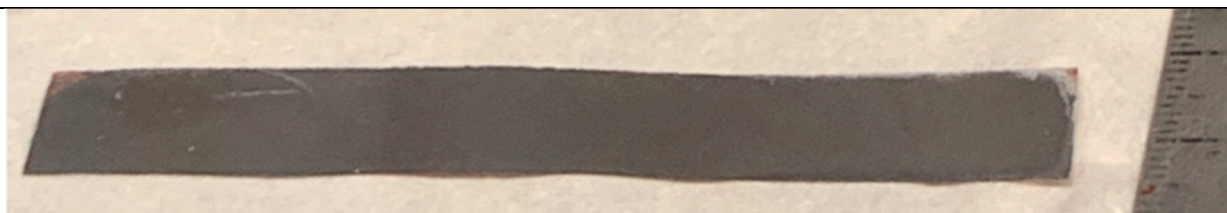


Figure S4. Image of the negative counter electrode after disassembly in the glovebox. No discoloration indicative of lithium plating was observed.