

Supplementary Material

Table S1. Distribution of the sample according to territorial aggregations.

indicators		Level of completed studies (aged 25 or over)				Self-perceived health of people aged 16 and over				Rate of risk of poverty 60% median - Total CAT				Social structure ESEC (9+1) People aged 16 and over			
		Without higher education		Higher education		Rest		Good or very good		Not at risk		Risk of poverty		Qualified (ESEC=1,2,3)		Rest of the population (ESEC>3)	
		population	Sample	population	Sample	population	Sample	population	Sample	population	Sample	population	Sample	population	Sample	population	Sample
Spatial planning areas	Metropolità	2,432,879	2506	1,055,038	1069	831,467	910	2,732,555	2729	3,703,620	4197	932,457	1170	1,117,805	1207	2,506,924	2492
	Comarques Gironines	416,058	594	127,503	168	141,481	215	424,010	572	551,935	828	189,964	251	131,268	188	439,616	609
	Camp de Tarragona	276,824	457	102,356	155	101,198	186	298,920	442	380,718	648	137,937	211	95,155	156	309,106	483
	Terres de l'Ebre	126,382	260	18,551	47	42,549	99	100,966	203	124,924	275	66,707	138	22,623	57	134,740	266
	Ponent i Alt Pirineu i Aran	248,049	525	83,672	164	110,394	205	227,424	469	345,627	788	97,584	195	79,088	171	275,828	554
	Comarques Centrals	241,163	550	62,914	150	80,563	204	237,595	504	332,053	757	73,435	208	54,768	135	262,803	580
	Penedès	311,230	495	118,836	155	108,024	174	360,702	503	449,618	719	153,038	219	129,627	182	330,552	494
Population size	Up to 5000 inhabitants	468,077	915	124,508	234	167,434	342	440,774	792	611,333	1223	178,986	369	124,590	241	499,740	942
	From 5001 to 10,000 inhabitants	348,549	788	124,828	258	117,268	285	369,762	778	523,587	1189	122,364	311	128,231	278	369,981	811
	From 10,001 to 50,000 inhabitants	1,150,566	1449	384,362	450	390,815	514	1,220,249	1441	1,571,442	2088	526,478	685	423,485	521	1,203,193	1468
	From 50,001 to 100,000 inhabits	542,106	640	208,060	245	189,774	233	618,191	691	854,507	1065	201,788	232	224,126	270	562,947	646
	More than 100,000 inhabits	775,471	876	225,829	266	246,341	304	759,287	845	1,007,455	1300	326,232	415	236,475	304	819,807	891
	Barcelona	767,817	719	501,282	455	304,043	315	973,912	875	1,320,173	1347	295,275	380	493,428	482	803,898	720
Degree of urbanization	Densely populated area	3,244,948	3654	1,327,754	1428	1,118,724	1345	3,607,557	3852	4,793,405	5798	1,294,266	1638	1,386,574	1586	3,386,192	3682
	Semi-urban or intermediate area	424,675	867	143,007	258	139,775	309	443,630	832	599,375	1218	219,061	449	143,127	272	457,225	896
	Sparsely populated area	382,963	866	98,109	222	157,177	339	330,986	738	495,717	1196	137,794	305	100,634	238	416,150	900
Segregation	Vulnerable setting	421,400	532	75,864	93	140,429	200	380,768	442	462,374	657	214,438	301	70,403	102	459,565	559
	Non-vulnerable setting	3,438,141	4544	1,288,007	1537	1,188,404	1650	3,671,073	4519	4,963,586	6849	1,352,129	1957	1,352,602	1720	3,595,675	4592
	Well-off setting	193,045	311	204,999	278	86,842	143	330,332	461	462,536	706	84,554	134	207,330	274	204,327	327
Catalonia		4,052,586	5387	1,568,870	1908	1,415,675	1993	4,382,174	5422	5,888,496	8212	1,651,122	2392	1,630,335	2096	4,259,567	5478

Note: The effective sample size of ECVHP2011 is 4235 households (sample units) distributed in 529 census tracts and from which a sample of 10,604 individuals and 8000 aged 16 and over has been obtained. Sampling errors for Catalonia as a whole are $\pm 1\%$ for individuals and $\pm 1.5\%$ for households. Source: In-house construction based on the ECVHP, 2011.

Table S2. Spearman's correlation according to territorial aggregations.

	Higher education and Self-perceived health (good or very good)	Higher education and overall life satisfaction	Higher education and not at risk of poverty	Higher education and qualified (ESEC = 1,2,3)	Self-perceived health (good or very good) and overall life satisfaction	Self-perceived health (good or very good) and not at risk of poverty	Self-perceived health (good or very good) and qualified (ESEC = 1,2,3)	Overall life satisfaction and not at risk of poverty	Overall life satisfaction and qualified (ESEC = 1,2,3)	Qualified (ESEC = 1,2,3) and not at risk of poverty
Territorial setting	0.679	-0.179	0.286	0.964	0.464	0.107	0.821	0.393	0.000	0.214
Population size	0.943	0.257	0.714	0.943	0.029	0.600	0.886	0.429	0.143	0.486
Degree of urbanization	1.000	-1.000	0.500	1.000	-1.000	0.500	1.000	-0.500	-1.000	0.500
Segregation	1.000	1.000	1.000	1.000	1.000	1.000	1.000	1.000	1.000	1.000

Source: In-house construction based on the ECVHP, 2011.

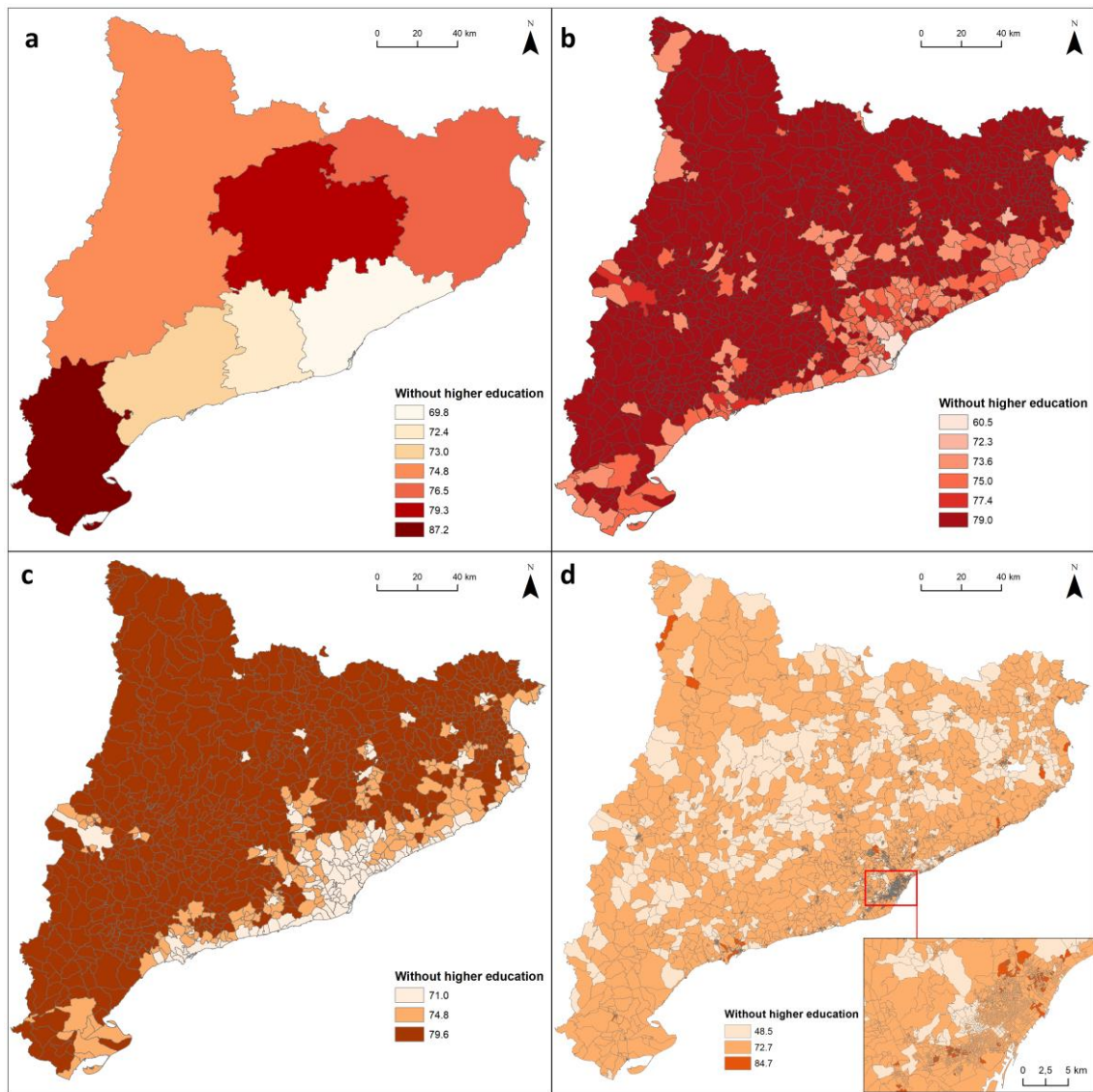


Figure S1. Percentage of population (aged 25 or over) without higher education according to Territorial settings, Catalonia. (a)Planning settings; (b)Population size; (c) Urban/rural character; (d) Residential segregation. Source: In-house construction based on the ECVHP, 2011.

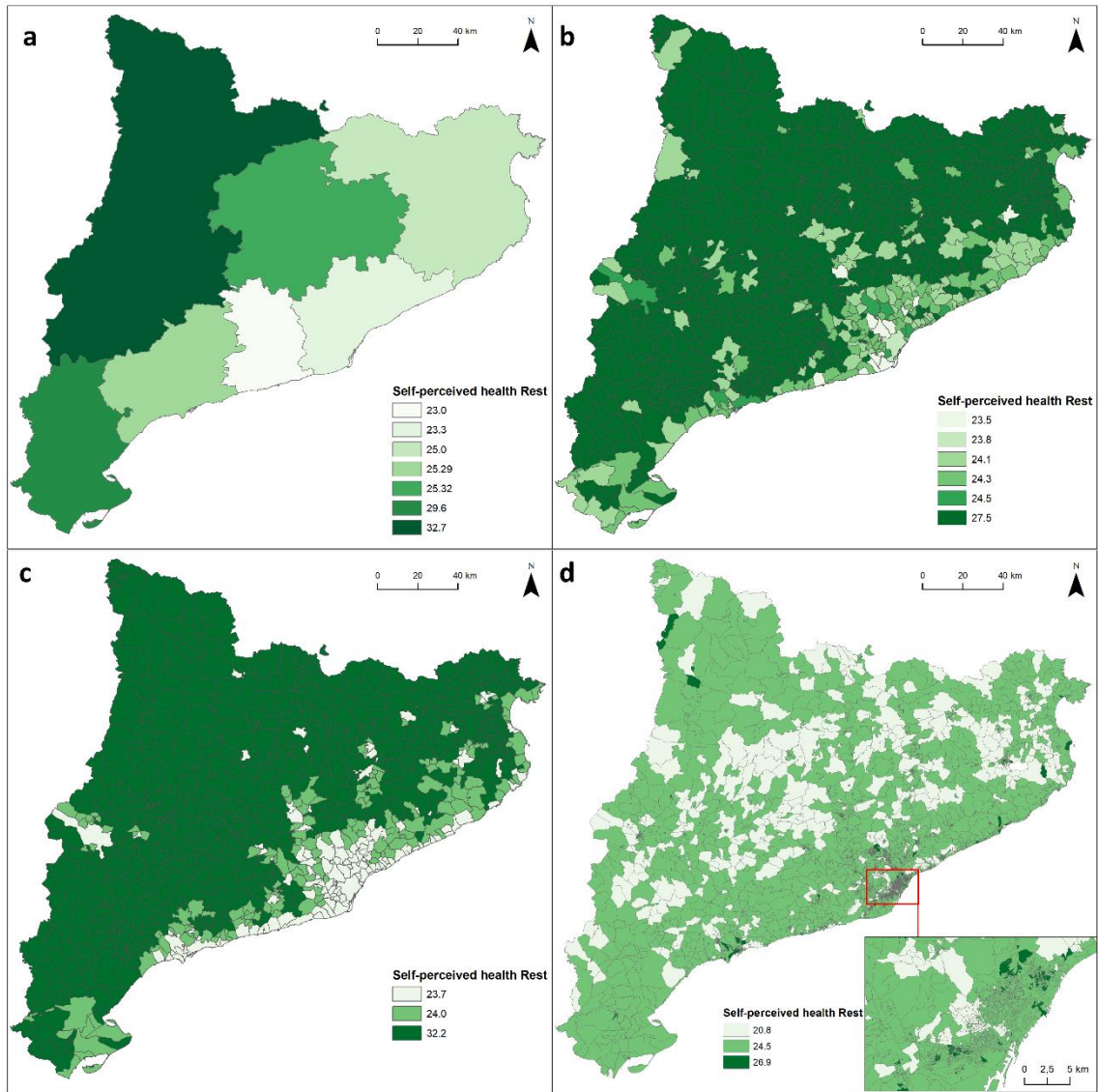


Figure S2. Percentage of population (aged 16 and over) with self-perceived health no good according to Territorial settings, Catalonia. (a)Planning settings; (b)Population size; (c) Urban/rural character; (d) Residential segregation. Source: In-house construction based on the ECVHP, 2011.

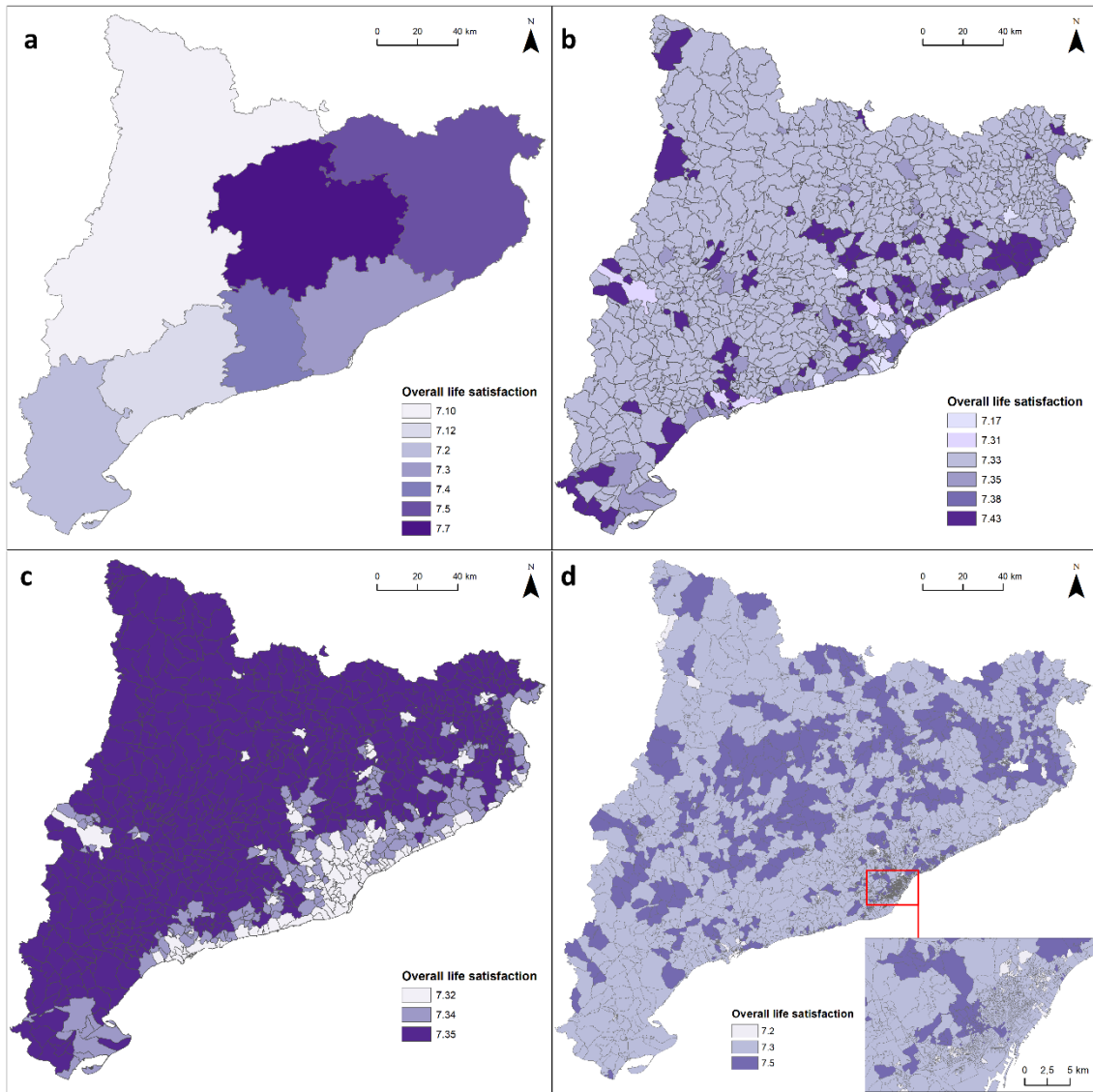


Figure S3. Overall life satisfaction of people (aged 16 and over) according to Territorial settings, Catalonia. (a) Planning settings; (b) Population size; (c) Urban/rural character; (d) Residential segregation. Source: In-house construction based on the ECVHP, 2011.

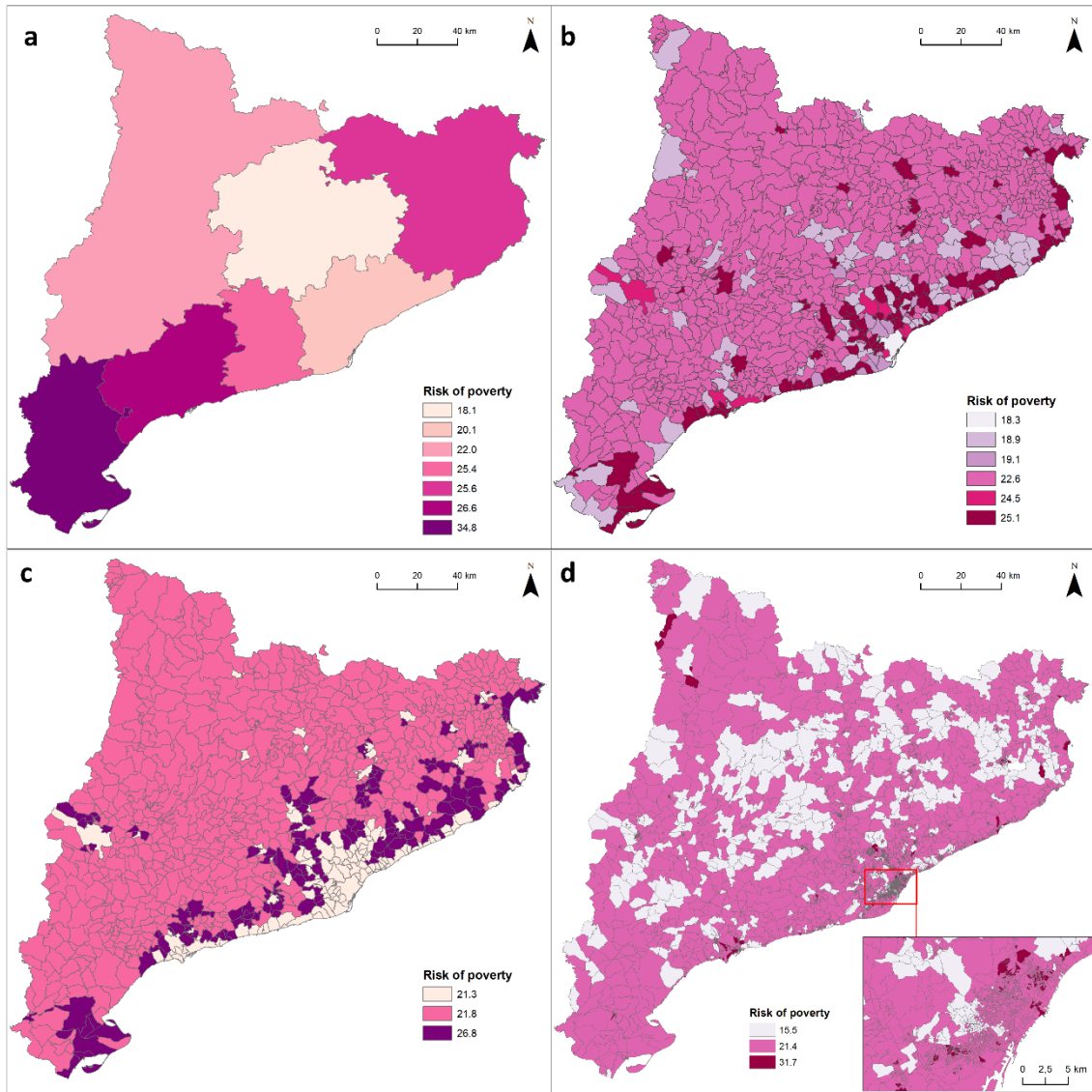


Figure S4. Percentage of population risk of poverty (60% median) according to Territorial settings, Catalonia. (a)Planning settings; (b)Population size; (c) Urban/rural character; (d) Residential segregation. Source: In-house construction based on the ECVHP, 2011.

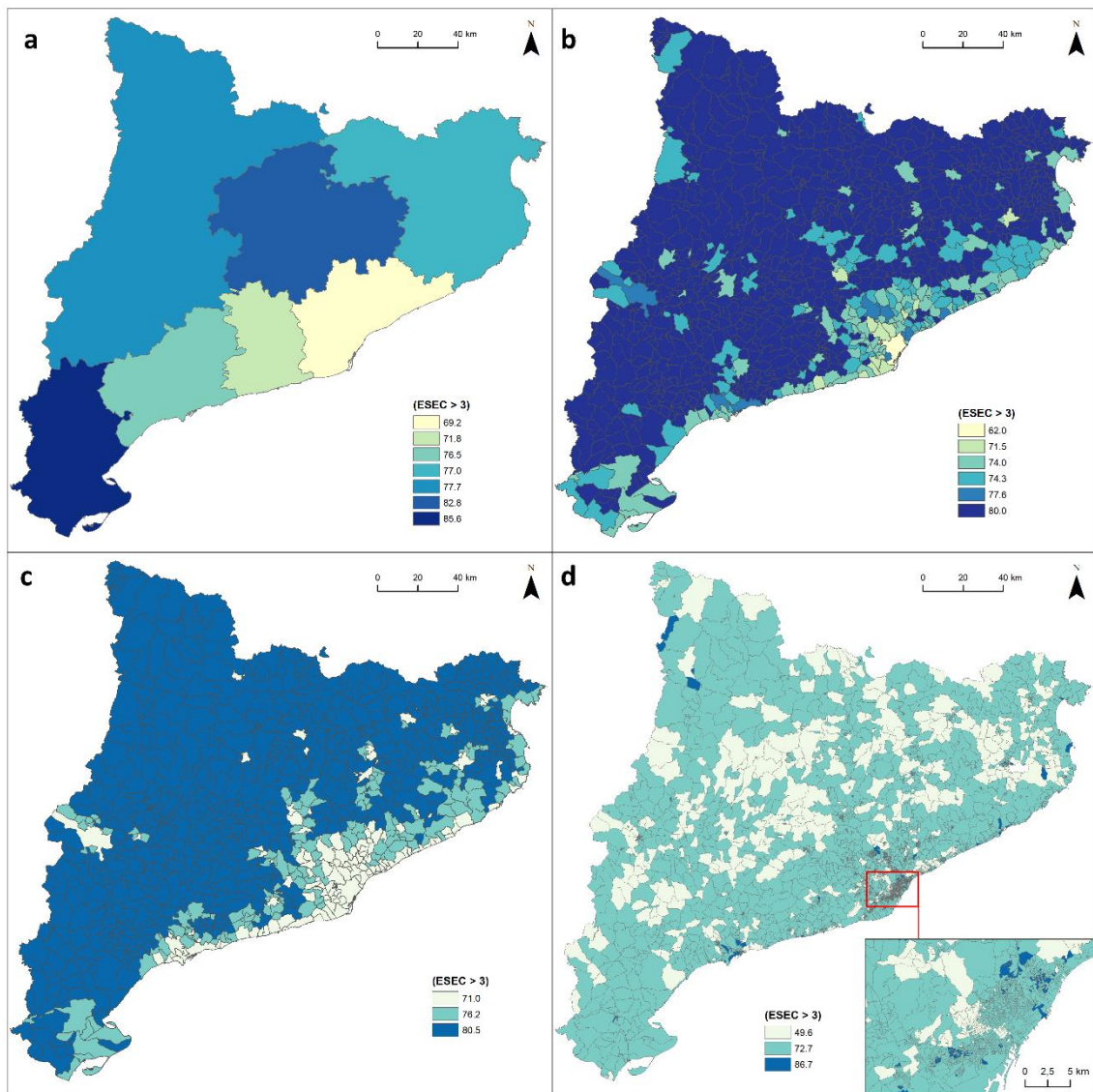


Figure S5. Percentage of population (aged 16 and over) social structure no qualified (ESEC > 3) according to Territorial settings, Catalonia. (a)Planning settings; (b)Population size; (c) Urban/rural character; (d) Residential segregation. Source: In-house construction based on the ECVHP, 2011.