



Supplementary Materials

Article

Predictive Risk Mapping of Schistosomiasis in Madagascar Using Ecological Niche Modeling and Precision Mapping

Mark A. Deka

Centers for Disease Control and Prevention (CDC), 4770 Buford Hwy NE, Atlanta, GA 30341, USA;
pmu5@cdc.gov

Table of Contents

Image S1: Environmental variable response plots

Table S1: Occurrence locations (n = 231)

Image S1: Environmental variable response plots.

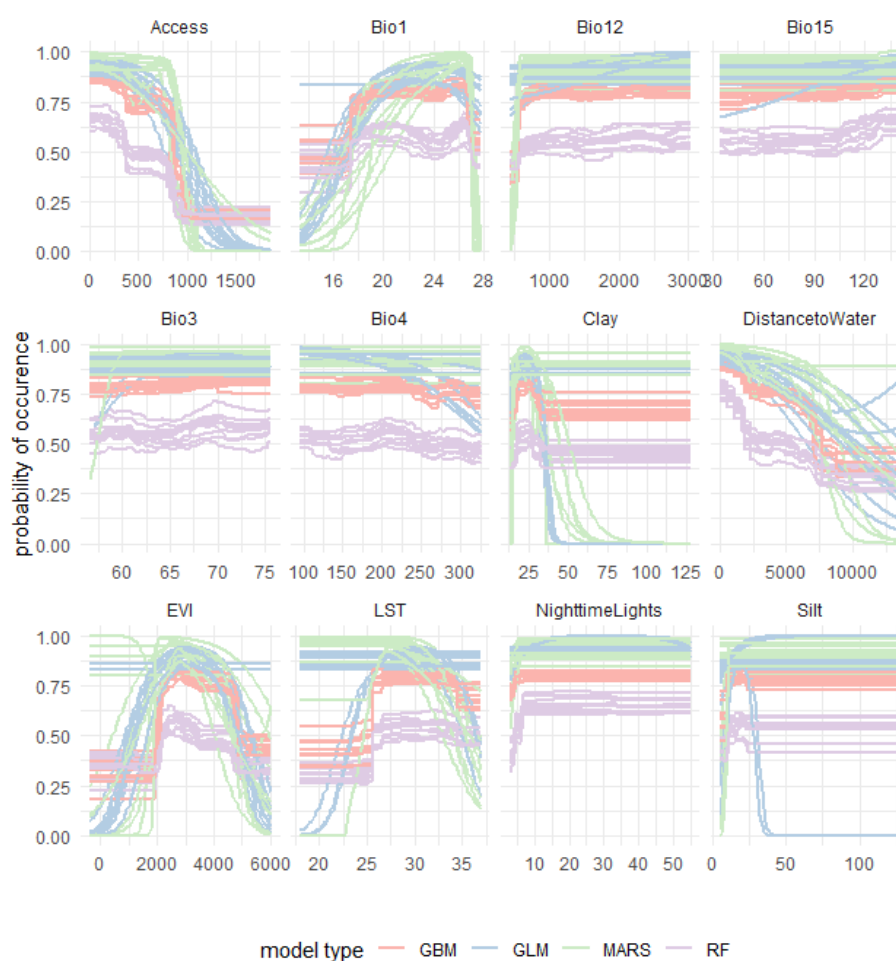


Table S1. Occurrence locations (n = 231).

Source	Year	Species	Longitude	Latitude
GBIF.org (11 November 2021) GBIF Occurrence Download https://doi.org/10.15468/dl.rmpbet .	NA	<i>Bulinus forskalii</i>	48.25899	-13.31421
GBIF.org (11 November 2021) GBIF Occurrence Download https://doi.org/10.15468/dl.rmpbet .	NA	<i>Bulinus forskalii</i>	48.25899	-13.31421
GBIF.org (11 November 2021) GBIF Occurrence Download https://doi.org/10.15468/dl.rmpbet .	1921	<i>Bulinus forskalii</i>	48.25899	-13.31421
GBIF.org (11 November 2021) GBIF Occurrence Download https://doi.org/10.15468/dl.rmpbet .	NA	<i>Bulinus forskalii</i>	48.25899	-13.31421
GBIF.org (11 November 2021) GBIF Occurrence Download https://doi.org/10.15468/dl.rmpbet .	NA	<i>Bulinus forskalii</i>	48.25899	-13.31421
GBIF.org (11 November 2021) GBIF Occurrence Download https://doi.org/10.15468/dl.rmpbet .	1921	<i>Bulinus forskalii</i>	48.25899	-13.31421
GBIF.org (11 November 2021) GBIF Occurrence Download https://doi.org/10.15468/dl.rmpbet .	1998	<i>Bulinus liratus</i>	48.75384 7	-14.5473
GBIF.org (11 November 2021) GBIF Occurrence Download https://doi.org/10.15468/dl.rmpbet .	1998	<i>Bulinus obtusispira</i>	49.04363 2	-13.193417
GBIF.org (11 November 2021) GBIF Occurrence Download https://doi.org/10.15468/dl.rmpbet .	1997	<i>Bulinus bavayi</i>	44.80220 3	-23.560516
GBIF.org (11 November 2021) GBIF Occurrence Download https://doi.org/10.15468/dl.rmpbet .	1998	<i>Bulinus truncatus</i>	44.713	-24.665417
GBIF.org (11 November 2021) GBIF Occurrence Download https://doi.org/10.15468/dl.rmpbet .	1997	<i>Bulinus truncatus</i>	48.66018 3	-14.66555
GBIF.org (11 November 2021) GBIF Occurrence Download https://doi.org/10.15468/dl.rmpbet .	1997	<i>Bulinus liratus</i>	44.80220 3	-23.560516
GBIF.org (11 November 2021) GBIF Occurrence Download https://doi.org/10.15468/dl.rmpbet .	2008	<i>Bulinus africanus</i>	47.33252	-23.20214
GBIF.org (11 November 2021) GBIF Occurrence Download https://doi.org/10.15468/dl.rmpbet .	1997	<i>Bulinus liratus</i>	44.52076 7	-23.4906
GBIF.org (11 November 2021) GBIF Occurrence Download https://doi.org/10.15468/dl.rmpbet .	1997	<i>Bulinus truncatus</i>	44.52076 7	-23.4906
GBIF.org (11 November 2021) GBIF Occurrence Download https://doi.org/10.15468/dl.rmpbet .	2008	<i>Bulinus truncatus</i>	45.66405	-24.2064
GBIF.org (11 November 2021) GBIF Occurrence Download https://doi.org/10.15468/dl.ntsbnv .	NA	<i>Biomphalaria pfeifferi</i>	47	-20
GBIF.org (11 November 2021) GBIF Occurrence Download https://doi.org/10.15468/dl.ntsbnv .	NA	<i>Biomphalaria pfeifferi</i>	48.40343 5	-14.899761
Clinical findings in female genital schistosomiasis in Madagascar	1997	<i>S. haematobium</i>	45.48300 2	-19.615
Ultrasonographical assessment of morbidity in schistosomiasis mansoni in Madagascar: a community-based study in a rural population	1993	<i>S. mansoni</i>	45.93299 9	-19.082001
Ultrasonographical assessment of morbidity in schistosomiasis mansoni in Madagascar: a community-based study in a rural population	1993	<i>S. mansoni</i>	45.812	-18.905001

Bilan parasitologique d'une population du nord ouest de Madagascar avant travaux d'aménagement hydraulique pour l'extension d'un complexe sucrier (Ambilobe). / Parasitological status of a population of north-western Madagascar before the construction of	1981	S. haematobium	48.84999 8	-13.083
Bilan parasitologique d'une population du nord ouest de Madagascar avant travaux d'aménagement hydraulique pour l'extension d'un complexe sucrier (Ambilobe). / Parasitological status of a population of north-western Madagascar before the construction of	1981	S. haematobium	49.05099 9	-13.194
Bilan parasitologique d'une population du nord ouest de Madagascar avant travaux d'aménagement hydraulique pour l'extension d'un complexe sucrier (Ambilobe). / Parasitological status of a population of north-western Madagascar before the construction of	1981	S. haematobium	48.86600 1	-13.335
Bilan parasitologique d'une population du nord ouest de Madagascar avant travaux d'aménagement hydraulique pour l'extension d'un complexe sucrier (Ambilobe). / Parasitological status of a population of north-western Madagascar before the construction of	1981	S. haematobium	48.88299 9	-13.116
Sexual behavior and sexually transmitted infections in men living in rural Madagascar: implications for HIV transmission	1998	S. haematobium	46.09899 9	-22.365999
Sexual behavior and sexually transmitted infections in men living in rural Madagascar: implications for HIV transmission	1998	S. haematobium	43.6833	-23.3167
Sero-epidemiological study of intestinal schistosomiasis at Ampefy (Itasy Lake, Madagascar)	1983	S. mansoni	46.73329 9	-19.049999
Study of schistosomiasis in the Lake Aloatra region - the "rice granary" of Madagascar	1982	S. mansoni	48.39899 8	-17.9
Study of schistosomiasis in the Lake Aloatra region - the "rice granary" of Madagascar	1982	S. mansoni	48.49599 8	-17.406
Study of schistosomiasis in the Lake Aloatra region - the "rice granary" of Madagascar	1982	S. mansoni	48.51670 1	-17.616699
Study of schistosomiasis in the Lake Aloatra region - the "rice granary" of Madagascar	1982	S. mansoni	48.5	-17.632999
Study of schistosomiasis in the Lake Aloatra region - the "rice granary" of Madagascar	1982	S. mansoni	48.43299 9	-17.750999
Study of schistosomiasis in the Lake Aloatra region - the "rice granary" of Madagascar	1982	S. mansoni	48.63330 1	-17.3333
Study of schistosomiasis in the Lake Aloatra region - the "rice granary" of Madagascar	1982	S. mansoni	48.42900 1	-17.514999
Schistosoma mansoni in schoolchildren in a Madagascan highland school assessed by PCR and sedimentation microscopy and Bayesian estimation of sensitivities and specificities	2012	S. mansoni	47.155	-20.5235
Schistosoma mansoni in schoolchildren in a Madagascan highland school assessed by PCR and sedimentation microscopy and Bayesian estimation of sensitivities and specificities	2012	S. mansoni	47.155	-20.5235

Parasitic co-infections: does <i>Ascaris lumbricoides</i> protect against <i>Plasmodium falciparum</i> infection?	1997	<i>S. mansoni</i>	46.54999 9	-19.383301
Morbidity of schistosomiasis <i>mansoni</i> in the highlands of Madagascar and comparison of current sonographical classification systems	1994	<i>S. mansoni</i>	46.833	-20.549
Worms, wells, and water in western Madagascar	1987	<i>S. haematobium</i>	44.632	-20.282
Lot quality assurance sampling for screening communities hyperendemic for <i>Schistosoma mansoni</i>	1998	<i>S. mansoni</i>	46.31600 2	-22.233
Lot quality assurance sampling for screening communities hyperendemic for <i>Schistosoma mansoni</i>	1998	<i>S. mansoni</i>	46.08200 1	-22.333
Lot quality assurance sampling for screening communities hyperendemic for <i>Schistosoma mansoni</i>	1998	<i>S. mansoni</i>	46.36600 1	-22.049999
Lot quality assurance sampling for screening communities hyperendemic for <i>Schistosoma mansoni</i>	1998	<i>S. mansoni</i>	45.799	-22.615999
Lot quality assurance sampling for screening communities hyperendemic for <i>Schistosoma mansoni</i>	1998	<i>S. mansoni</i>	46.08330 2	-22.35
Lot quality assurance sampling for screening communities hyperendemic for <i>Schistosoma mansoni</i>	1998	<i>S. mansoni</i>	46.23199 8	-22.316
Lot quality assurance sampling for screening communities hyperendemic for <i>Schistosoma mansoni</i>	1998	<i>S. mansoni</i>	46.4333	-23.450001
Lot quality assurance sampling for screening communities hyperendemic for <i>Schistosoma mansoni</i>	1998	<i>S. mansoni</i>	46.48300 2	-22.6
Lot quality assurance sampling for screening communities hyperendemic for <i>Schistosoma mansoni</i>	1998	<i>S. mansoni</i>	46.28300 1	-22.499001
Lot quality assurance sampling for screening communities hyperendemic for <i>Schistosoma mansoni</i>	1998	<i>S. mansoni</i>	46.368	-22.573
Lot quality assurance sampling for screening communities hyperendemic for <i>Schistosoma mansoni</i>	1998	<i>S. mansoni</i>	46.11500 2	-22.450001
Lot quality assurance sampling for screening communities hyperendemic for <i>Schistosoma mansoni</i>	1998	<i>S. mansoni</i>	45.6833	-22.0833
Lot quality assurance sampling for screening communities hyperendemic for <i>Schistosoma mansoni</i>	1998	<i>S. mansoni</i>	46.583	-22.483999
Lot quality assurance sampling for screening communities hyperendemic for <i>Schistosoma mansoni</i>	1998	<i>S. mansoni</i>	46.368	-22.211
Lot quality assurance sampling for screening communities hyperendemic for <i>Schistosoma mansoni</i>	1998	<i>S. mansoni</i>	45.75	-22.516001
Lot quality assurance sampling for screening communities hyperendemic for <i>Schistosoma mansoni</i>	1998	<i>S. mansoni</i>	46.166	-22.35
Lot quality assurance sampling for screening communities hyperendemic for <i>Schistosoma mansoni</i>	1998	<i>S. mansoni</i>	46.09899 9	-22.431999
Lot quality assurance sampling for screening communities hyperendemic for <i>Schistosoma mansoni</i>	1998	<i>S. mansoni</i>	46.15000 2	-22.316
Lot quality assurance sampling for screening communities hyperendemic for <i>Schistosoma mansoni</i>	1998	<i>S. mansoni</i>	46.09899 9	-22.431999
Lot quality assurance sampling for screening communities hyperendemic for <i>Schistosoma mansoni</i>	1998	<i>S. mansoni</i>	46.15000 2	-22.316
Lot quality assurance sampling for screening communities hyperendemic for <i>Schistosoma mansoni</i>	1998	<i>S. mansoni</i>	45.75	-22.516001

Lot quality assurance sampling for screening communities hyperendemic for <i>Schistosoma mansoni</i>	1998	<i>S. mansoni</i>	46.15000 2	-22.466
Lot quality assurance sampling for screening communities hyperendemic for <i>Schistosoma mansoni</i>	1998	<i>S. mansoni</i>	45.99900 1	-22.433001
Lot quality assurance sampling for screening communities hyperendemic for <i>Schistosoma mansoni</i>	1998	<i>S. mansoni</i>	46.49900 1	-22.632999
Lot quality assurance sampling for screening communities hyperendemic for <i>Schistosoma mansoni</i>	1998	<i>S. mansoni</i>	46.09899 9	-22.367001
Lot quality assurance sampling for screening communities hyperendemic for <i>Schistosoma mansoni</i>	1998	<i>S. mansoni</i>	45.99900 1	-22.532
Lot quality assurance sampling for screening communities hyperendemic for <i>Schistosoma mansoni</i>	1998	<i>S. mansoni</i>	46.15000 2	-22.466
Lot quality assurance sampling for screening communities hyperendemic for <i>Schistosoma mansoni</i>	1998	<i>S. mansoni</i>	46.49900 1	-22.533001
Lot quality assurance sampling for screening communities hyperendemic for <i>Schistosoma mansoni</i>	1998	<i>S. mansoni</i>	45.73329 9	-22.6833
Lot quality assurance sampling for screening communities hyperendemic for <i>Schistosoma mansoni</i>	1998	<i>S. mansoni</i>	46.11669 9	-22.75
Lot quality assurance sampling for screening communities hyperendemic for <i>Schistosoma mansoni</i>	1998	<i>S. mansoni</i>	46.28329 8	-22.483299
Lot quality assurance sampling for screening communities hyperendemic for <i>Schistosoma mansoni</i>	1998	<i>S. mansoni</i>	46.09899 9	-22.4
Ultrasonographical assessment of morbidity in <i>Schistosoma mansoni</i> infections in Madagascar according to two classifications: Cairo/WHO and Managil-Hannover staging-systems	1996	<i>S. mansoni</i>	46.73329 9	-19.049999
Ultrasonographical assessment of morbidity in <i>Schistosoma mansoni</i> infections in Madagascar according to two classifications: Cairo/WHO and Managil-Hannover staging-systems	1996	<i>S. mansoni</i>	46.78200 2	-18.85
Potential spread of <i>Schistosoma mansoni</i> in Antananarivo and suburbs according to present epidemiological data	1994	<i>S. mansoni</i>	47.083	-19.365999
Potential spread of <i>Schistosoma mansoni</i> in Antananarivo and suburbs according to present epidemiological data	1994	<i>S. mansoni</i>	47.01599 9	-17.916
Potential spread of <i>Schistosoma mansoni</i> in Antananarivo and suburbs according to present epidemiological data	1994	<i>S. mansoni</i>	47.5	-18.931999
Potential spread of <i>Schistosoma mansoni</i> in Antananarivo and suburbs according to present epidemiological data	1994	<i>S. mansoni</i>	47.5	-18.931999
Potential spread of <i>Schistosoma mansoni</i> in Antananarivo and suburbs according to present epidemiological data	1994	<i>S. mansoni</i>	47.56600 2	-18.948
Potential spread of <i>Schistosoma mansoni</i> in Antananarivo and suburbs according to present epidemiological data	1994	<i>S. mansoni</i>	47.083	-18.283001

Potential spread of <i>Schistosoma mansoni</i> in Antananarivo and suburbs according to present epidemiological data	1994	<i>S. mansoni</i>	46.84999 8	-18.8333
Potential spread of <i>Schistosoma mansoni</i> in Antananarivo and suburbs according to present epidemiological data	1994	<i>S. mansoni</i>	47.01599 9	-17.916
Potential spread of <i>Schistosoma mansoni</i> in Antananarivo and suburbs according to present epidemiological data	1994	<i>S. mansoni</i>	47.5	-18.716
Potential spread of <i>Schistosoma mansoni</i> in Antananarivo and suburbs according to present epidemiological data	1994	<i>S. mansoni</i>	47.53300 1	-18.931999
Potential spread of <i>Schistosoma mansoni</i> in Antananarivo and suburbs according to present epidemiological data	1994	<i>S. mansoni</i>	47.53300 1	-18.931999
Potential spread of <i>Schistosoma mansoni</i> in Antananarivo and suburbs according to present epidemiological data	1994	<i>S. mansoni</i>	47.5	-18.899
Potential spread of <i>Schistosoma mansoni</i> in Antananarivo and suburbs according to present epidemiological data	1994	<i>S. haematobium</i>	46.84999 8	-18.8333
Potential spread of <i>Schistosoma mansoni</i> in Antananarivo and suburbs according to present epidemiological data	1994	<i>S. mansoni</i>	46.84999 8	-18.8333
Potential spread of <i>Schistosoma mansoni</i> in Antananarivo and suburbs according to present epidemiological data	1994	<i>S. mansoni</i>	47.56600 2	-18.999001
Potential spread of <i>Schistosoma mansoni</i> in Antananarivo and suburbs according to present epidemiological data	1994	<i>S. mansoni</i>	47.48300 2	-18.216
Potential spread of <i>Schistosoma mansoni</i> in Antananarivo and suburbs according to present epidemiological data	1994	<i>S. mansoni</i>	47.549	-18.85
Potential spread of <i>Schistosoma mansoni</i> in Antananarivo and suburbs according to present epidemiological data	1994	<i>S. mansoni</i>	47.53390 1	-18.8904
Potential spread of <i>Schistosoma mansoni</i> in Antananarivo and suburbs according to present epidemiological data	1994	<i>S. mansoni</i>	47.53300 1	-18.833
Reagent strips: their interest for <i>Schistosoma haematobium</i> mass screening in Madagascar	1994	<i>S. haematobium</i>	45.48300 2	-19.615
<i>Schistosoma haematobium</i> infection in western Madagascar: morbidity determined by ultrasonography	1994	<i>S. haematobium</i>	45.48300 2	-19.615
Geographic differences in hepatosplenic complications of schistosomiasis mansoni and explanatory factors of morbidity	1997	<i>S. mansoni</i>	46.28329 8	-22.483299
Geographic differences in hepatosplenic complications of schistosomiasis mansoni and explanatory factors of morbidity	1997	<i>S. mansoni</i>	46.368	-22.211

Geographic differences in hepatosplenic complications of schistosomiasis mansoni and explanatory factors of morbidity	1997	<i>S. mansoni</i>	46.36600 1	-22.049999
Identification of communities endemic for urinary bilharziosis by the "Lot Quality Assurance Sampling" method in Madagascar	2000	<i>S. haematobium</i>	46.70000 1	-16.166
Identification of communities endemic for urinary bilharziosis by the "Lot Quality Assurance Sampling" method in Madagascar	2000	<i>S. haematobium</i>	45.59299 9	-20.349001
Identification of communities endemic for urinary bilharziosis by the "Lot Quality Assurance Sampling" method in Madagascar	2000	<i>S. haematobium</i>	45.59299 9	-20.349001
Identification of communities endemic for urinary bilharziosis by the "Lot Quality Assurance Sampling" method in Madagascar	2000	<i>S. haematobium</i>	45.59299 9	-20.349001
Validation of questionnaire methods to identify Schistosoma haematobium bilharziasis hyperendemic zones in Madagascar	1999	<i>S. haematobium</i>	43.659	-22.179001
Validation of questionnaire methods to identify Schistosoma haematobium bilharziasis hyperendemic zones in Madagascar	1999	<i>S. haematobium</i>	44.53599 9	-24.813
Validation of questionnaire methods to identify Schistosoma haematobium bilharziasis hyperendemic zones in Madagascar	1999	<i>S. haematobium</i>	44.81600 2	-23.716
Validation of questionnaire methods to identify Schistosoma haematobium bilharziasis hyperendemic zones in Madagascar	1999	<i>S. haematobium</i>	44.81600 2	-24.499001
Validation of questionnaire methods to identify Schistosoma haematobium bilharziasis hyperendemic zones in Madagascar	1999	<i>S. haematobium</i>	45.16500 1	-25.183001
Validation of questionnaire methods to identify Schistosoma haematobium bilharziasis hyperendemic zones in Madagascar	1999	<i>S. haematobium</i>	44.74499 9	-24.698999
Validation of questionnaire methods to identify Schistosoma haematobium bilharziasis hyperendemic zones in Madagascar	1999	<i>S. haematobium</i>	44.40000 2	-20.1667
Validation of questionnaire methods to identify Schistosoma haematobium bilharziasis hyperendemic zones in Madagascar	1999	<i>S. haematobium</i>	44.4333	-20.1833
Validation of questionnaire methods to identify Schistosoma haematobium bilharziasis hyperendemic zones in Madagascar	1999	<i>S. haematobium</i>	44.76499 9	-24.65
Validation of questionnaire methods to identify Schistosoma haematobium bilharziasis hyperendemic zones in Madagascar	1999	<i>S. haematobium</i>	43.61669 9	-22.25
Validation of questionnaire methods to identify Schistosoma haematobium bilharziasis hyperendemic zones in Madagascar	1999	<i>S. haematobium</i>	44.0667	-23.733299

Validation of questionnaire methods to identify <i>Schistosoma haematobium</i> bilharziasis hyperendemic zones in Madagascar	1999	<i>S. haematobium</i>	43.681999 9	-22.282
Validation of questionnaire methods to identify <i>Schistosoma haematobium</i> bilharziasis hyperendemic zones in Madagascar	1999	<i>S. haematobium</i>	43.83330 2	-22.1667
WHO. Atlas of the Global Distribution of Schistosomiasis - Madagascar - Mauritius. (1987)	1956	<i>S. mansoni</i>	49.39667 8	-18.16201
WHO. Atlas of the Global Distribution of Schistosomiasis - Madagascar - Mauritius. (1987)	1971	<i>S. haematobium</i>	46.3261	-15.705726
WHO. Atlas of the Global Distribution of Schistosomiasis - Madagascar - Mauritius. (1987)	1956	<i>S. haematobium</i>	46.69222 9	-15.481616
WHO. Atlas of the Global Distribution of Schistosomiasis - Madagascar - Mauritius. (1987)	1956	<i>S. haematobium</i>	46.24069 2	-15.762139
WHO. Atlas of the Global Distribution of Schistosomiasis - Madagascar - Mauritius. (1987)	1956	<i>S. haematobium</i>	44.86761 6	-16.348874
WHO. Atlas of the Global Distribution of Schistosomiasis - Madagascar - Mauritius. (1987)	1956	<i>S. haematobium</i>	44.48581 3	-16.743123
WHO. Atlas of the Global Distribution of Schistosomiasis - Madagascar - Mauritius. (1987)	1956	<i>S. haematobium</i>	45.10344 5	-16.971656
WHO. Atlas of the Global Distribution of Schistosomiasis - Madagascar - Mauritius. (1987)	1956	<i>S. haematobium</i>	43.95664	-17.51135
WHO. Atlas of the Global Distribution of Schistosomiasis - Madagascar - Mauritius. (1987)	1957	<i>S. haematobium</i>	44.03084 5	-18.056023
WHO. Atlas of the Global Distribution of Schistosomiasis - Madagascar - Mauritius. (1987)	1956	<i>S. haematobium</i>	44.31612 6	-18.566662
WHO. Atlas of the Global Distribution of Schistosomiasis - Madagascar - Mauritius. (1987)	1956	<i>S. haematobium</i>	44.34268 6	-19.026085
WHO. Atlas of the Global Distribution of Schistosomiasis - Madagascar - Mauritius. (1987)	1956	<i>S. haematobium</i>	44.92772 4	-17.821386
WHO. Atlas of the Global Distribution of Schistosomiasis - Madagascar - Mauritius. (1987)	1957	<i>S. haematobium</i>	45.25602 3	-18.546364
WHO. Atlas of the Global Distribution of Schistosomiasis - Madagascar - Mauritius. (1987)	1952	<i>S. haematobium</i>	44.62393	-18.673742
WHO. Atlas of the Global Distribution of Schistosomiasis - Madagascar - Mauritius. (1987)	1973	<i>S. haematobium</i>	44.54296	-19.699319
WHO. Atlas of the Global Distribution of Schistosomiasis - Madagascar - Mauritius. (1987)	1956	<i>S. haematobium</i>	44.68878 1	-19.705983
WHO. Atlas of the Global Distribution of Schistosomiasis - Madagascar - Mauritius. (1987)	1950	<i>S. haematobium</i>	44.96328 2	-19.72856
WHO. Atlas of the Global Distribution of Schistosomiasis - Madagascar - Mauritius. (1987)	1956	<i>S. haematobium</i>	44.50377 4	-20.328885
WHO. Atlas of the Global Distribution of Schistosomiasis - Madagascar - Mauritius. (1987)	1961	<i>S. haematobium</i>	44.36060 3	-20.577678
WHO. Atlas of the Global Distribution of Schistosomiasis - Madagascar - Mauritius. (1987)	1956	<i>S. haematobium</i>	45.05279 2	-20.411643
WHO. Atlas of the Global Distribution of Schistosomiasis - Madagascar - Mauritius. (1987)	1956	<i>S. haematobium</i>	44.92903 6	-21.051182
WHO. Atlas of the Global Distribution of Schistosomiasis - Madagascar - Mauritius. (1987)	1952	<i>S. haematobium</i>	43.60127 4	-21.322382

WHO. Atlas of the Global Distribution of Schistosomiasis - Madagascar - Mauritius. (1987)	1957	S. haematobium	43.88936 4	-21.714482
WHO. Atlas of the Global Distribution of Schistosomiasis - Madagascar - Mauritius. (1987)	1956	S. haematobium	45.06501 4	-22.172659
WHO. Atlas of the Global Distribution of Schistosomiasis - Madagascar - Mauritius. (1987)	1957	S. haematobium	43.76105 6	-23.547822
WHO. Atlas of the Global Distribution of Schistosomiasis - Madagascar - Mauritius. (1987)	1950	S. haematobium	44.68199 9	-22.650675
WHO. Atlas of the Global Distribution of Schistosomiasis - Madagascar - Mauritius. (1987)	1951	S. haematobium	48.08403 9	-14.204835
WHO. Atlas of the Global Distribution of Schistosomiasis - Madagascar - Mauritius. (1987)	1973	S. haematobium	49.64809 -14.655774	
WHO. Atlas of the Global Distribution of Schistosomiasis - Madagascar - Mauritius. (1987)	1965	S. haematobium	49.94736 4	-13.860145
WHO. Atlas of the Global Distribution of Schistosomiasis - Madagascar - Mauritius. (1987)	1965	S. haematobium	49.66129 9	-13.20527
WHO. Atlas of the Global Distribution of Schistosomiasis - Madagascar - Mauritius. (1987)	1976	S. haematobium	49.23443 3	-13.156635
WHO. Atlas of the Global Distribution of Schistosomiasis - Madagascar - Mauritius. (1987)	1955	S. haematobium	49.01558 7	-13.047098
WHO. Atlas of the Global Distribution of Schistosomiasis - Madagascar - Mauritius. (1987)	1958	S. haematobium	48.27459 6	-13.39859
WHO. Atlas of the Global Distribution of Schistosomiasis - Madagascar - Mauritius. (1987)	1950	S. haematobium	47.39557 6	-15.121899
WHO. Atlas of the Global Distribution of Schistosomiasis - Madagascar - Mauritius. (1987)	1952	S. haematobium	47.73895 6	-14.605437
WHO. Atlas of the Global Distribution of Schistosomiasis - Madagascar - Mauritius. (1987)	1965	S. haematobium	47.71141 4	-14.405327
WHO. Atlas of the Global Distribution of Schistosomiasis - Madagascar - Mauritius. (1987)	1976	S. haematobium	48.82315 7	-13.550206
WHO. Atlas of the Global Distribution of Schistosomiasis - Madagascar - Mauritius. (1987)	1956	S. haematobium	48.75048 8	-14.542363
WHO. Atlas of the Global Distribution of Schistosomiasis - Madagascar - Mauritius. (1987)	1957	S. haematobium	48.54612 -15.041382	
WHO. Atlas of the Global Distribution of Schistosomiasis - Madagascar - Mauritius. (1987)	1956	S. haematobium	48.53577 4	-15.741076
WHO. Atlas of the Global Distribution of Schistosomiasis - Madagascar - Mauritius. (1987)	1956	S. haematobium	47.73528 3	-15.934238
WHO. Atlas of the Global Distribution of Schistosomiasis - Madagascar - Mauritius. (1987)	1958	S. haematobium	47.99281 2	-14.882714
WHO. Atlas of the Global Distribution of Schistosomiasis - Madagascar - Mauritius. (1987)	1956	S. haematobium	47.91856 2	-15.544481
WHO. Atlas of the Global Distribution of Schistosomiasis - Madagascar - Mauritius. (1987)	1956	S. haematobium	46.95688 8	-17.305317
WHO. Atlas of the Global Distribution of Schistosomiasis - Madagascar - Mauritius. (1987)	1956	S. haematobium	47.65102 2	-16.797774
WHO. Atlas of the Global Distribution of Schistosomiasis - Madagascar - Mauritius. (1987)	1954	S. mansoni	49.45466 7	-17.489337
WHO. Atlas of the Global Distribution of Schistosomiasis - Madagascar - Mauritius. (1987)	1957	S. mansoni	49.13917 5	-17.432439

WHO. Atlas of the Global Distribution of Schistosomiasis - Madagascar - Mauritius. (1987)	1956	<i>S. mansoni</i>	46.812301	-25.027343
WHO. Atlas of the Global Distribution of Schistosomiasis - Madagascar - Mauritius. (1987)	1955	<i>S. mansoni</i>	46.687384	-25.05382
WHO. Atlas of the Global Distribution of Schistosomiasis - Madagascar - Mauritius. (1987)	1955	<i>S. mansoni</i>	46.965085	-24.569246
WHO. Atlas of the Global Distribution of Schistosomiasis - Madagascar - Mauritius. (1987)	1955	<i>S. mansoni</i>	47.547207	-23.798909
WHO. Atlas of the Global Distribution of Schistosomiasis - Madagascar - Mauritius. (1987)	1954	<i>S. mansoni</i>	46.971859	-24.020175
WHO. Atlas of the Global Distribution of Schistosomiasis - Madagascar - Mauritius. (1987)	1971	<i>S. mansoni</i>	47.597946	-23.339606
WHO. Atlas of the Global Distribution of Schistosomiasis - Madagascar - Mauritius. (1987)	1955	<i>S. mansoni</i>	45.061314	-25.174255
WHO. Atlas of the Global Distribution of Schistosomiasis - Madagascar - Mauritius. (1987)	1950	<i>S. mansoni</i>	46.079448	-24.072031
WHO. Atlas of the Global Distribution of Schistosomiasis - Madagascar - Mauritius. (1987)	1955	<i>S. mansoni</i>	46.476443	-24.604196
WHO. Atlas of the Global Distribution of Schistosomiasis - Madagascar - Mauritius. (1987)	1955	<i>S. mansoni</i>	45.595353	-24.673199
WHO. Atlas of the Global Distribution of Schistosomiasis - Madagascar - Mauritius. (1987)	1955	<i>S. mansoni</i>	45.302332	-24.558602
WHO. Atlas of the Global Distribution of Schistosomiasis - Madagascar - Mauritius. (1987)	1975	<i>S. mansoni</i>	44.362292	-23.818446
WHO. Atlas of the Global Distribution of Schistosomiasis - Madagascar - Mauritius. (1987)	1955	<i>S. mansoni</i>	46.091328	-25.17356
WHO. Atlas of the Global Distribution of Schistosomiasis - Madagascar - Mauritius. (1987)	1953	<i>S. mansoni</i>	45.012415	-23.545244
WHO. Atlas of the Global Distribution of Schistosomiasis - Madagascar - Mauritius. (1987)	1968	<i>S. mansoni</i>	49.001243	-18.470049
WHO. Atlas of the Global Distribution of Schistosomiasis - Madagascar - Mauritius. (1987)	1961	<i>S. mansoni</i>	48.976676	-19.330777
WHO. Atlas of the Global Distribution of Schistosomiasis - Madagascar - Mauritius. (1987)	1961	<i>S. mansoni</i>	48.80693	-19.893801
WHO. Atlas of the Global Distribution of Schistosomiasis - Madagascar - Mauritius. (1987)	1959	<i>S. mansoni</i>	49.415774	-17.660979
WHO. Atlas of the Global Distribution of Schistosomiasis - Madagascar - Mauritius. (1987)	1957	<i>S. mansoni</i>	47.034079	-22.500241
WHO. Atlas of the Global Distribution of Schistosomiasis - Madagascar - Mauritius. (1987)	1954	<i>S. mansoni</i>	48.147637	-21.229374
WHO. Atlas of the Global Distribution of Schistosomiasis - Madagascar - Mauritius. (1987)	1954	<i>S. mansoni</i>	48.345482	-21.23837
WHO. Atlas of the Global Distribution of Schistosomiasis - Madagascar - Mauritius. (1987)	1953	<i>S. mansoni</i>	48.479514	-20.773606
WHO. Atlas of the Global Distribution of Schistosomiasis - Madagascar - Mauritius. (1987)	1957	<i>S. mansoni</i>	48.600427	-18.900622
WHO. Atlas of the Global Distribution of Schistosomiasis - Madagascar - Mauritius. (1987)	1951	<i>S. mansoni</i>	47.400828	-20.307152
WHO. Atlas of the Global Distribution of Schistosomiasis - Madagascar - Mauritius. (1987)	1935	<i>S. mansoni</i>	48.322593	-20.597505

WHO. Atlas of the Global Distribution of Schistosomiasis - Madagascar - Mauritius. (1987)	1955	<i>S. mansoni</i>	47.041834	-21.556506
WHO. Atlas of the Global Distribution of Schistosomiasis - Madagascar - Mauritius. (1987)	1955	<i>S. mansoni</i>	44.635148	-22.090054
WHO. Atlas of the Global Distribution of Schistosomiasis - Madagascar - Mauritius. (1987)	1955	<i>S. mansoni</i>	44.857337	-21.37432
WHO. Atlas of the Global Distribution of Schistosomiasis - Madagascar - Mauritius. (1987)	1955	<i>S. mansoni</i>	45.954758	-20.532126
WHO. Atlas of the Global Distribution of Schistosomiasis - Madagascar - Mauritius. (1987)	1956	<i>S. mansoni</i>	47.553352	-17.034229
WHO. Atlas of the Global Distribution of Schistosomiasis - Madagascar - Mauritius. (1987)	1957	<i>S. mansoni</i>	48.802676	-19.57594
WHO. Atlas of the Global Distribution of Schistosomiasis - Madagascar - Mauritius. (1987)	1956	<i>S. mansoni</i>	46.914577	-20.380735
High burden of Schistosoma mansoni infection in school-aged children in Marolambo District, Madagascar	2017	Human Case	48.099899	-20.116435
High burden of Schistosoma mansoni infection in school-aged children in Marolambo District, Madagascar	2017	Human Case	47.940974	-20.578717
Serology- and Blood-PCR-Based Screening for Schistosomiasis in Pregnant Women in Madagascar—A Cross-Sectional Study and Test Comparison Approach	2021	Human Case	46.049136	-18.76977
Sawyer, S. G. (2013). Schistosomiasis (Bilharzia) in Madagascar: A Case Study of a Neglected Tropical Disease.	2013	Human Case	44.279857	-20.294073
Usefulness of environmental DNA for detecting Schistosoma mansoni occurrence sites in Madagascar	2018	Human Case	46.964915	-17.453877
Clinical findings in female genital schistosomiasis in Madagascar	1998	Human Case	44.459261	-21.70056
Semen quality in Schistosoma haematobium infected men in Madagascar	2009	Human Case	48.928219	-13.090937
The first cases of bovine schistosomiasis in Madagascar	1972	Animal Case	47.103564	-21.452462
Gynecological Manifestations, Histopathological Findings, and Schistosoma-Specific Polymerase Chain Reaction Results Among Women with Schistosoma haematobium Infection: A Cross-sectional Study in Madagascar	2015	Human Case	45.456016	-19.529578
Sexual Behavior and Sexually Transmitted Infections in Men Living in Rural Madagascar	2003	Human Case	47.035557	-19.847871
Sexual Behavior and Sexually Transmitted Infections in Men Living in Rural Madagascar	2003	Human Case	46.09153	-22.374414
An Isolated Focus of Intestinal Schistosomiasis in Madagascar.	1952	Human Case	48.835307	-15.850427
An Isolated Focus of Intestinal Schistosomiasis in Madagascar.	1952	Human Case	47.198984	-19.415002
WHO. Atlas of the Global Distribution of Schistosomiasis - Madagascar - Mauritius. (1987)	1971	<i>S. mansoni</i>	47.527049	-23.267175
WHO. Atlas of the Global Distribution of Schistosomiasis - Madagascar - Mauritius. (1987)	1953	<i>S. mansoni</i>	47.317439	-23.482813

WHO. Atlas of the Global Distribution of Schistosomiasis - Madagascar - Mauritius. (1987)	1957	<i>S. mansoni</i>	46.95795 6	-22.711437
WHO. Atlas of the Global Distribution of Schistosomiasis - Madagascar - Mauritius. (1987)	1953	<i>S. mansoni</i>	47.29477 2	-22.657318
WHO. Atlas of the Global Distribution of Schistosomiasis - Madagascar - Mauritius. (1987)	1955	<i>S. mansoni</i>	47.58935 1	-22.536765
WHO. Atlas of the Global Distribution of Schistosomiasis - Madagascar - Mauritius. (1987)	1953	<i>S. mansoni</i>	47.47583 2	-22.189739
WHO. Atlas of the Global Distribution of Schistosomiasis - Madagascar - Mauritius. (1987)	1954	<i>S. mansoni</i>	47.82823 8	-22.364933
WHO. Atlas of the Global Distribution of Schistosomiasis - Madagascar - Mauritius. (1987)	1955	<i>S. mansoni</i>	47.72136	-22.101609
WHO. Atlas of the Global Distribution of Schistosomiasis - Madagascar - Mauritius. (1987)	1957	<i>S. mansoni</i>	47.89467 8	-21.597646
WHO. Atlas of the Global Distribution of Schistosomiasis - Madagascar - Mauritius. (1987)	1955	<i>S. mansoni</i>	47.73184	-20.988238
WHO. Atlas of the Global Distribution of Schistosomiasis - Madagascar - Mauritius. (1987)	1935	<i>S. mansoni</i>	48.18157 9	-20.510791
WHO. Atlas of the Global Distribution of Schistosomiasis - Madagascar - Mauritius. (1987)	1959	<i>S. mansoni</i>	47.56558	-20.678543
WHO. Atlas of the Global Distribution of Schistosomiasis - Madagascar - Mauritius. (1987)	1961	<i>S. mansoni</i>	48.78155 1	-19.65841
WHO. Atlas of the Global Distribution of Schistosomiasis - Madagascar - Mauritius. (1987)	1959	<i>S. mansoni</i>	48.83658	-18.537703
WHO. Atlas of the Global Distribution of Schistosomiasis - Madagascar - Mauritius. (1987)	1959	<i>S. mansoni</i>	48.47032 1	-20.058293
WHO. Atlas of the Global Distribution of Schistosomiasis - Madagascar - Mauritius. (1987)	1956	<i>S. haematobium</i>	48.83704 7	-16.171871
WHO. Atlas of the Global Distribution of Schistosomiasis - Madagascar - Mauritius. (1987)	1956	<i>S. haematobium</i>	47.73042 5	-17.63386
WHO. Atlas of the Global Distribution of Schistosomiasis - Madagascar - Mauritius. (1987)	1957	<i>S. haematobium</i>	46.54143 1	-16.439454
WHO. Atlas of the Global Distribution of Schistosomiasis - Madagascar - Mauritius. (1987)	1956	<i>S. haematobium</i>	45.85663 5	-16.016655
WHO. Atlas of the Global Distribution of Schistosomiasis - Madagascar - Mauritius. (1987)	1951	<i>S. haematobium</i>	50.14286 7	-15.009571
WHO. Atlas of the Global Distribution of Schistosomiasis - Madagascar - Mauritius. (1987)	1951	<i>S. haematobium</i>	47.87207 9	-14.964814
WHO. Atlas of the Global Distribution of Schistosomiasis - Madagascar - Mauritius. (1987)	1956	<i>S. haematobium</i>	45.56528 5	-16.580413
WHO. Atlas of the Global Distribution of Schistosomiasis - Madagascar - Mauritius. (1987)	1956	<i>S. haematobium</i>	46.12064 6	-16.257579
WHO. Atlas of the Global Distribution of Schistosomiasis - Madagascar - Mauritius. (1987)	1959	<i>S. mansoni</i>	44.79016 3	-23.880787