

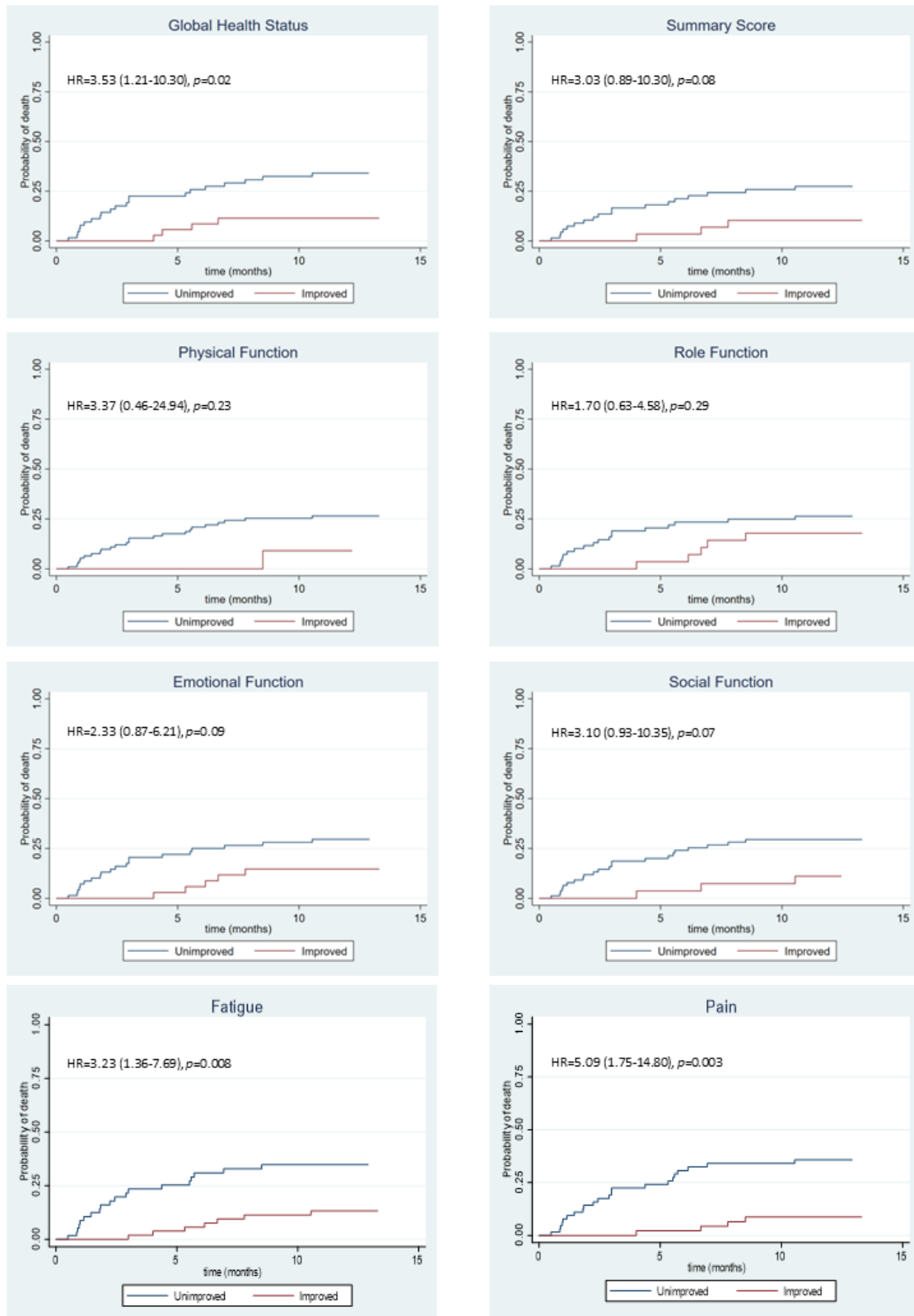
Supplementary Material

Supplementary Table S1. Association of baseline QOL, baseline thresholds for clinical importance and minimum important difference (baseline to month 3) with survival, unadjusted for treatment arm nor visceral KS status.

QOL Domains	Baseline QOL				Thresholds for clinical importance (baseline)				Minimum important difference (baseline to month 3)			
	n	QOL scores Quartiles (IQR)	HR (95% CI)	p	Above TCI n (%)	Below TCI n (%)	HR (95% CI)	p	Improved n (%)	Unimproved n (%)	HR (95% CI)	p
Global health score	31	1.Qu (0-41.67)	3.01 (0.67-13.57)	0.15	No TCI available for global health score				35 (35)	65 (65)	3.53 (1.21-10.30)	*0.02
	33	2.Qu (>41.67-50)	1.28 (0.26-6.32)	0.77								
	22	3.Qu (>50-66.67)	2.20 (0.44-10.92)	0.33								
	14	4.Qu (>66.67-100)	ref.									
Summary score	25	1.Qu (17.91-61.03)	2.97 (0.60-14.73)	0.18	No TCI available for summary score				29 (30)	69 (70)	3.03 (0.89-10.30)	0.08
	24	2.Qu (>61.03-75.15)	3.24 (0.65-16.07)	0.15								
	25	3.Qu (>71.15-87.74)	3.23 (0.67-15.59)	0.14								
	24	4.Qu (>87.74-100)	ref.									
Physical functioning	59	1.Qu (66.67-86.67)	2.79 (0.82-9.51)	0.10	89 (85)	16 (15)	2.44 (0.97-6.12)	0.06	11 (10)	94 (90)	3.37 (0.46-24.94)	0.23
	20	2.Qu (>86.67-93.33)	2.11 (0.50-8.84)	0.31								
	26	3.Qu (>93.33-100)	ref.									
Role functioning	36	1.Qu (0-33.33)	1.79 (0.48-6.61)	0.38	53 (53)	47 (47)	1.60 (0.70-3.64)	0.27	29 (29)	71 (71)	1.70 (0.63-4.58)	0.29
	34	2.Qu (>33.33-66.67)	2.01 (0.55-7.30)	0.29								
	10	3.Qu (>66.67-83.33)	0.62 (0.06-6.00)	0.68								

	20	4.Qu (>83.33-100)	ref.									
Emotional functioning	29	1.Qu (0-50)	0.86 (0.24-3.06)	0.822	61 (58)	44 (42)	1.12 (0.51-2.48)	0.777	34 (32)	71 (68)	2.33 (0.87-6.21)	0.09
	30	2.Qu (>50-75)	1.49 (0.47-4.74)	0.500								
	29	3.Qu (>75-91.67)	0.71 (0.19-2.64)	0.611								
	17	4.Qu (>91.67-100)	ref.									
Social functioning	35	1.Qu (0-33.33)	2.26 (0.85-6.01)	0.100	57 (54)	48 (46)	1.69 (0.77-3.72)	0.119	27 (26)	78 (74)	3.10 (0.93-10.35)	0.07
	38	2.Qu (>33.33-83.33)	1.00 (0.34-2.98)	1.000								
	32	3.Qu (>83.33-100)	ref.									
Fatigue	31	1.Qu (0-11.11)	0.65 (0.22-1.95)	0.444	53 (51)	51 (49)	1.0 (0.45-2.22)	1.000	53 (62)	33 (38)	3.34 (1.38-8.05)	*0.007
	32	2.Qu (>11.11-44.44)	0.95 (0.35-2.54)	0.911								
	15	3.Qu (>44.44-61.11)	0.42 (0.09-2.04)	0.288								
	26	4.Qu (>61.11-100)	ref.									
Pain	36	1.Qu (0-16.67)	0.91 (0.30-2.70)	0.866	69 (66)	36 (34)	1.10 (0.49-2.50)	0.822	46 (53)	40 (47)	5.46 (1.87-15.93)	*0.002
	30	2.Qu (>16.67-50)	0.69 (0.21-2.27)	0.555								
	20	3.Qu (>50-83.33)	0.86 (0.25-2.97)	0.811								
	19	4.Qu (>83.33-100)	ref.									

QOL: quality of life, HR: hazard ratio, IQR: interquartile range, CI: confidence interval, TCI: thresholds for clinical importance, MID: minimum important difference, ref: reference, * Statistically significant at 0.05 level. Physical and social functioning are categorised into tertiles due to a lack of data variability. QOL scores below the TCI for functional domains or above the TCI for symptom domains indicate clinically relevant problems or symptoms. An increase in the QOL score of 10 points or more for GHS and the functional domains and less than 10 or more for the symptom domains is considered clinically meaningful.



Supplementary Figure S1. Kaplan Meier survival curves between patients who demonstrated a minimum important difference in QOL scores from baseline to month 3 and those who did not, for each QOL domain, unadjusted for treatment arm nor KS visceral status.