

Figure 1: Nonparametric incidence estimations in Stages 1-4 (1a-1d, respectively), depending on the age, computed with the bootstrap bandwidth (solid blue line) and with the smoothed bootstrap bandwidth (dashed blue line). The green line represents the Parzen-Rosenblatt kernel density estimations of the covariate age, using Sheather and Jones' plug-in bandwidth.

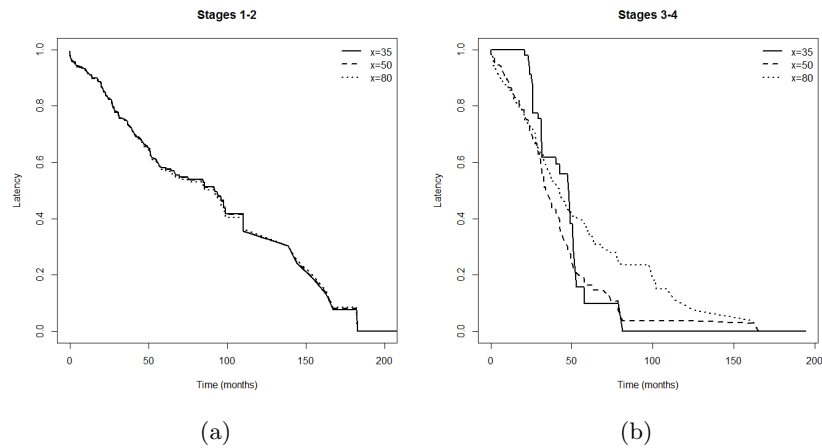


Figure 2: Latency estimation for patients in Stages 1-2 (2a) and 3-4 (2b) with ages 35 (solid line), 50 (dashed line) and 80 (dotted line), computed using the nonparametric estimator with the bootstrap bandwidth.