



Figure S3 (Supplementary data): Franz cell assembly for *in vitro* diffusion study of voriconazole: (1) Franz cell diffusion system; (2) Water bath; (3) Magnetic stirrer

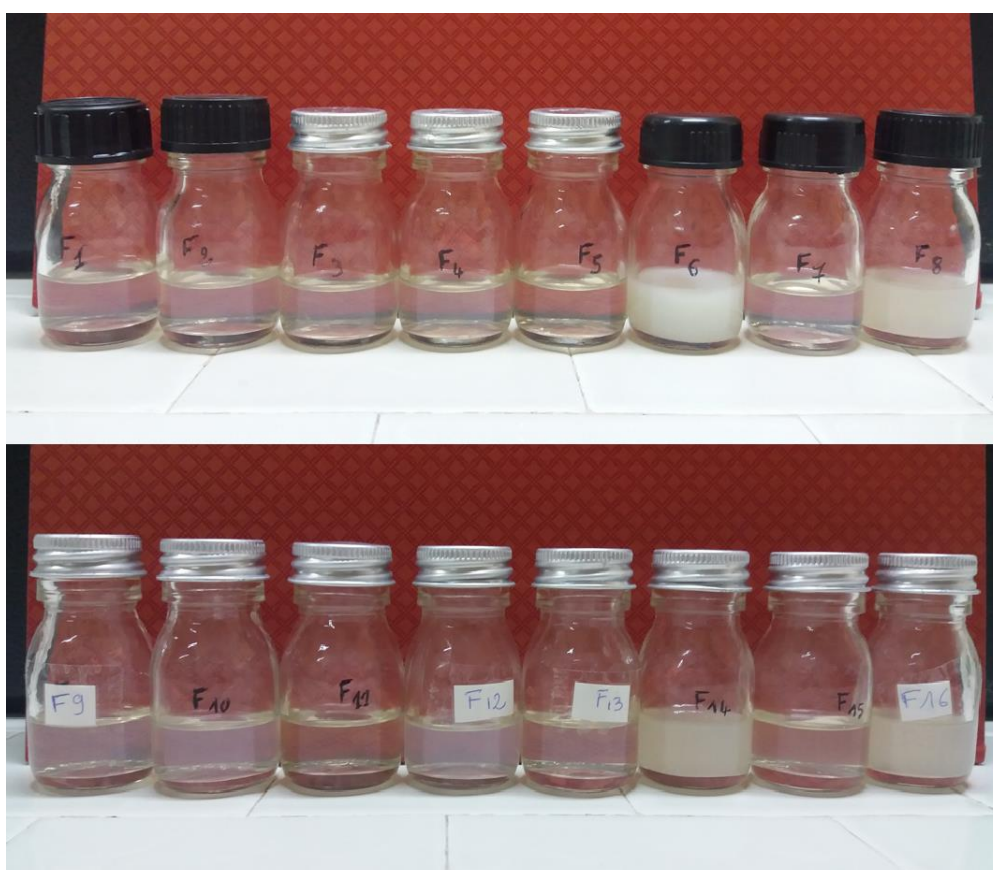


Figure S4 (Supplementary data): Macroscopic aspect of the sixteen runs generated by Design-Expert® Software



Figure S5 (Supplementary data): Macroscopic aspect of the optimal VCZ-loaded nanoemulsion with a translucent appearance and a bluish brightness

Table S1 (Supplementary data): Summary of the results of statistical analyses for response Y1 (Droplet size) – Design-Expert® software

Mathematical models	Sequential p-value	Lack of fit p-value	Std. Dev.	R ²	Adjusted R ²	Predicted R ²	PRESS	
Linear	0,0023	0,0001	6,67	0,6071	0,5467	0,2232	1144,86	
Quadratic	0,0002	0,0023	3,00	0,9391	0,9086	0,5716	631,37	
Special cubic	0,0190	0,0059	2,29	0,9680	0,9467	0,5929	599,97	
Cubic	0,0009	0,2460	0,7714	0,9976	0,9939	0,8972	151,45	Suggested

Table S2 (Supplementary data): Summary of the results of statistical analyses for response Y2 (PDI) – Design-Expert® software

Mathematical models	Sequential p-value	Lack of fit p-value	Std. Dev.	R ²	Adjusted R ²	Predicted R ²	PRESS	
Linear	0,0046	0,0006	0,1090	0,5633	0,4961	0,2013	0,2826	
Quadratic	< 0.0001	0,0413	0,0358	0,9638	0,9457	0,7917	0,0737	
Special cubic	0,0170	0,1076	0,0270	0,9814	0,9690	0,8172	0,0647	
Cubic	0,0413	0,3849	0,0174	0,9949	0,9871	0,8614	0,0490	Suggested