

Supplementary data

Synergistic effect of sono-photocatalysis on the degradation of rhodamine B dye using BiFeO₃ nanoparticles synthesized via a modified combustion method

Anel I. Robles-Cortes¹, Daniel Flores-Ramírez¹, Lissette Medina-de la Rosa², Denisse F. González-Ramírez¹, José Ortiz-Landeros^{3,*} and Issis C. Romero-Ibarra^{1,*}

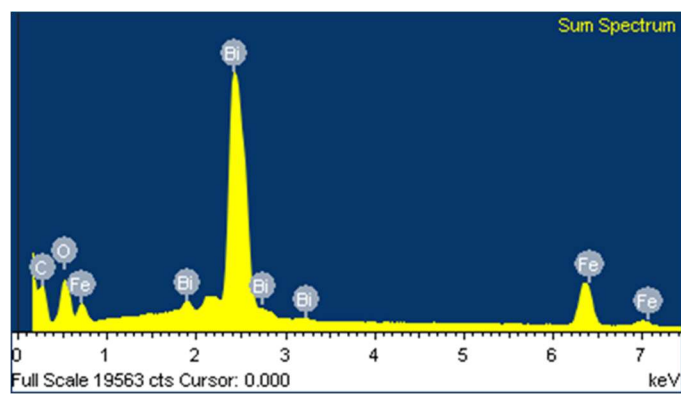
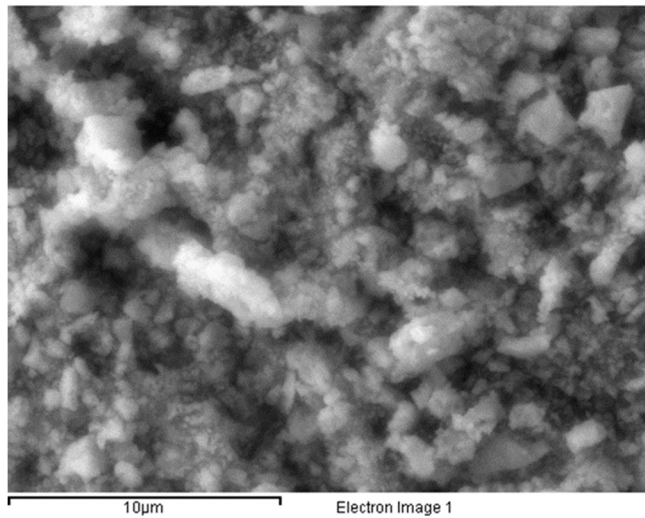
¹ Instituto Politécnico Nacional, Unidad Profesional Interdisciplinaria en Ingeniería y Tecnologías Avanzadas, IPN Avenue, Mexico City 07340, Mexico; aroblesc2100@alumno.ipn.mx (A.I.R.-C.); dfloresr1000@alumno.ipn.mx (D.F.-R.); denisse_amr@hotmail.com (D.F.G.-R.)

² Instituto Politécnico Nacional, Escuela Superior de Ingeniería Química e Industrias Extractivas, Departamento de Ingeniería Química Industrial, UPALM-Zacatenco, IPN Avenue, Mexico City 07738, Mexico; lmedinad1800@alumno.ipn.mx

³ Instituto Politécnico Nacional, Escuela Superior de Ingeniería Química e Industrias Extractivas, Departamento de Ingeniería en Metalurgia y Materiales, UPALM-Zacatenco, IPN Avenue, Mexico City 07738, Mexico

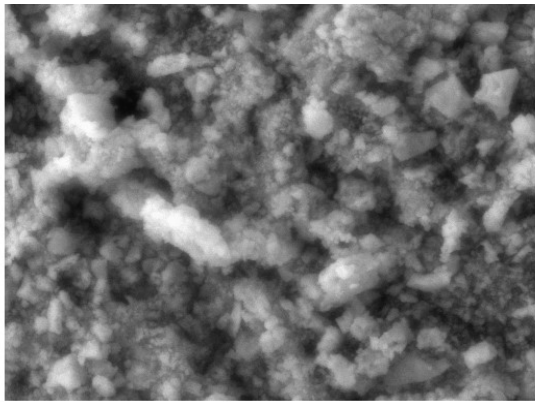
* Correspondence: jortizla@ipn.mx (J.O.-L.); iromero@ipn.mx (I.C.R.-I.);
Tel.: +52-5557296000 Ext. 54267 (J.O.-L.); +52-5557296000 Ext. 56918 (I.C.R.-I.)

SEM-EDS analysis BiFeO₃ catalyst (S1)

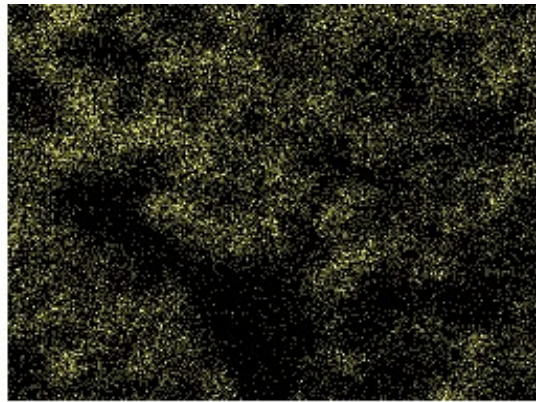


Element	Weight%	Atomic%
C K	16.23	48.72
O K	15.52	34.98
Fe K	9.57	6.18
Bi M	58.68	10.13
Totals	100.00	

EDS MAPPING (S1)



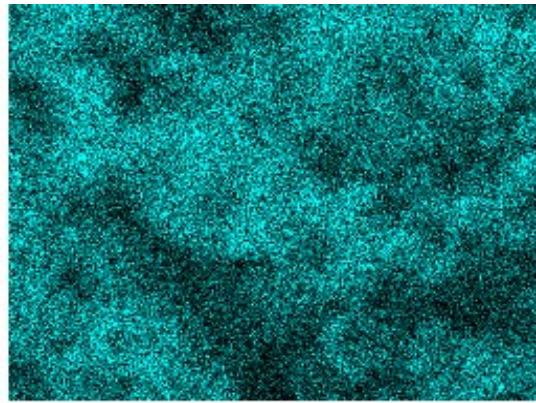
Electron Image 1



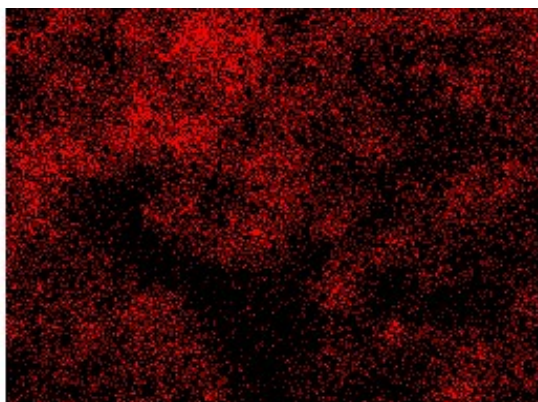
O Ka1



Fe Ka1



Bi Ma1



C Ka1_2