

Kolden and Abatzoglou Supplemental material

Table S1. Number of hectares on the landscape associated with each combination of fire types and total fires over time. NK = Non-katabatic conditions, SA = Santa Ana winds present, SUN = Sundowner winds present.

Total Fires	Non-katabatic	NK + SA	NK + SUN	Santa Ana	Sundowner	SA + SUN	ALL 3	Grand Total
1	854,328			391,022	7,094			1,252,444
2	222,364	223,457	11,643	165,187	356	2,806		625,812
3	36,527	119,490	278	55,222		11	2,999	214,527
4	7,497	48,174		26,770			2	82,443
5	1,517	15,889		11,116				28,522
6	437	5,861		2,342				8,640
7	298	1,396		756				2,449
8	131	469		2				602
9	40	84						125
10	6	28						34
Grand Total	1,123,144	414,848	11,921	652,417	7,450	2,817	3,001	2,215,598

Figure S1. Highest frequency of non-katabatic wind fires is clustered around major interstates and highways, particularly at mountain passes.

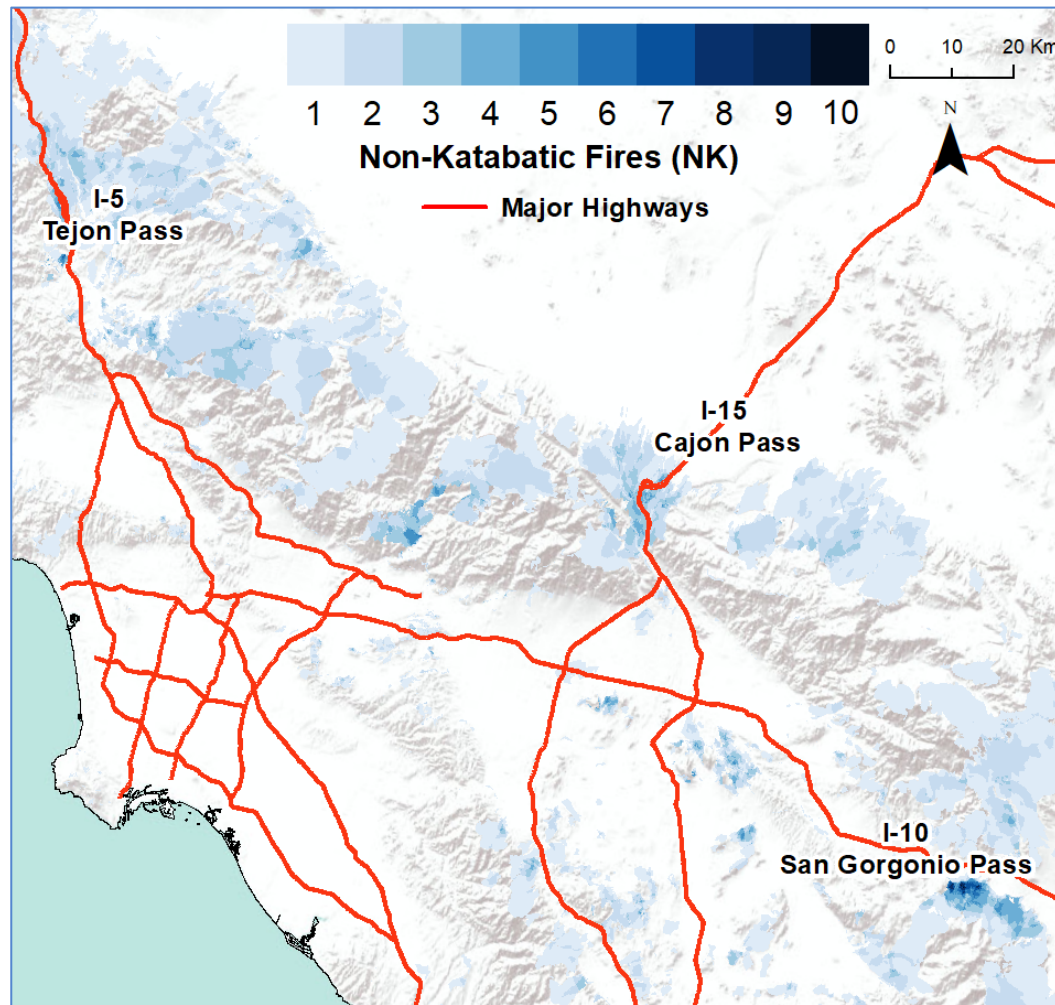


Figure S2. Year of previous fire prior to the 2017 Thomas Fire (legend shows colors for start of a given decade).

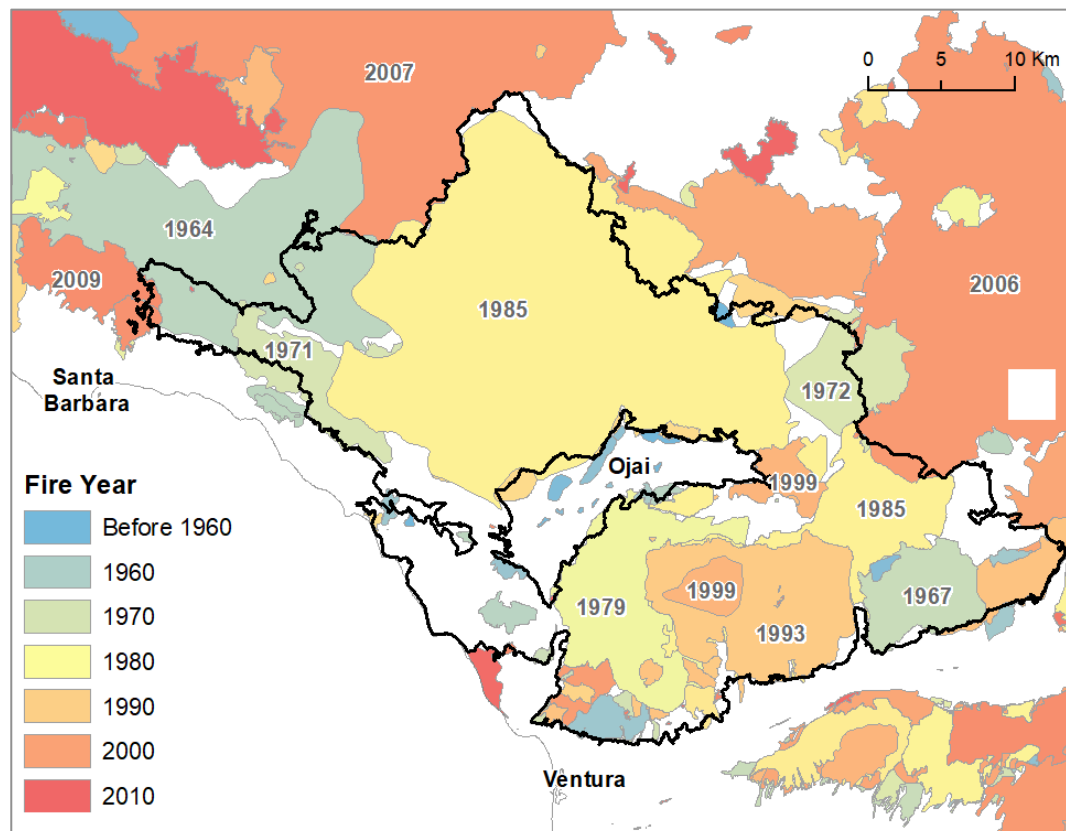


Figure S3. Percent of extreme fire danger days defined by the Burning Index exceeding the 95th percentile that occurred between September 15 and March 14. The red line denotes the inland penetration of coastal low clouds as delineated by [30].

