

Supplementary Materials

# Soil and Tree Nutrient Status of High Elevation Mixed Red Spruce (*Picea rubens* Sarg.) and Broadleaf Deciduous Forests

Philip M. Crim <sup>1,2\*</sup>, Louis M. McDonald <sup>3</sup> and Jonathan R. Cumming <sup>2</sup>

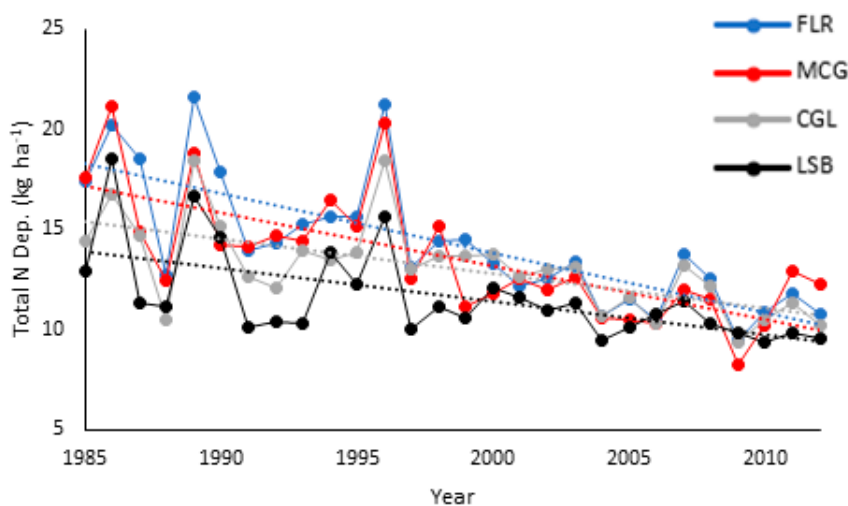
<sup>1</sup> Department of Physical and Natural Sciences, The College of Saint Rose, Albany, NY 12203, USA

<sup>2</sup> Department of Biology, West Virginia University, Morgantown, WV 26506, USA; jcumming@wvu.edu

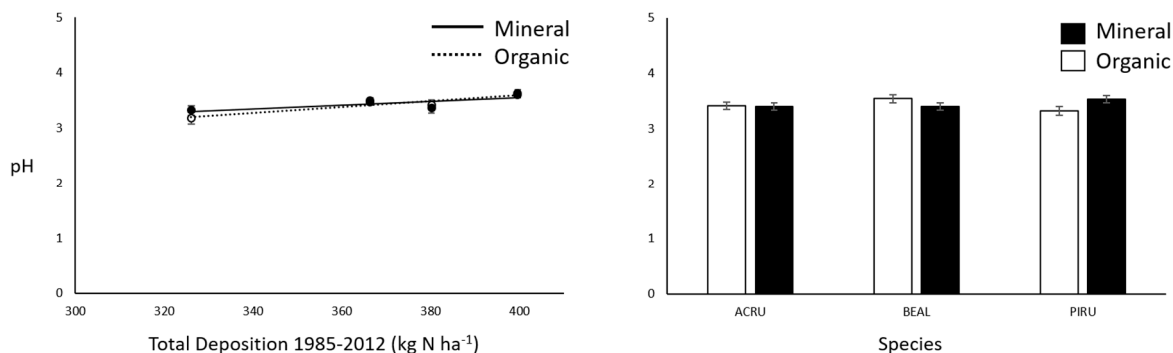
<sup>3</sup> Division of Plant and Soil Sciences, West Virginia University, Morgantown, WV 26506, USA; lmmcdonald@mail.wvu.edu

\* Correspondence: pcrim@strose.edu; Tel.: +1-518-454-2910

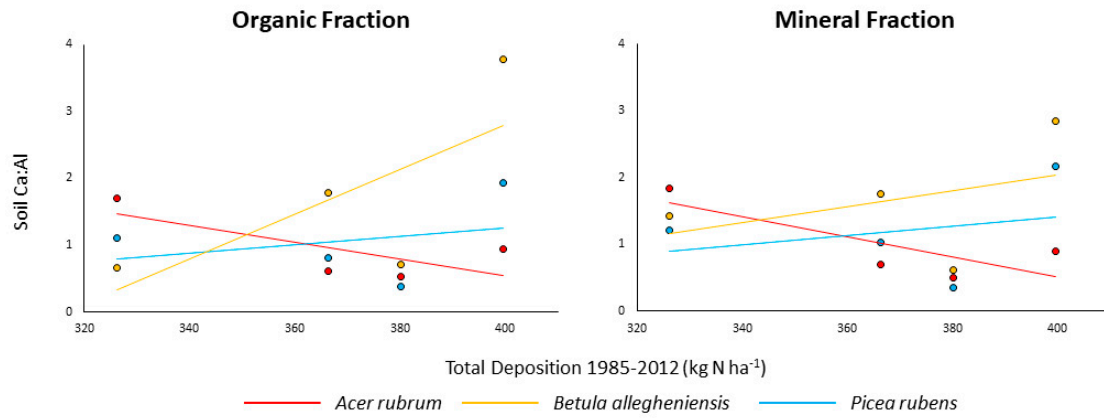
Received: 5 September 2019; Accepted: 9 December 2019; Published: 11 December 2019



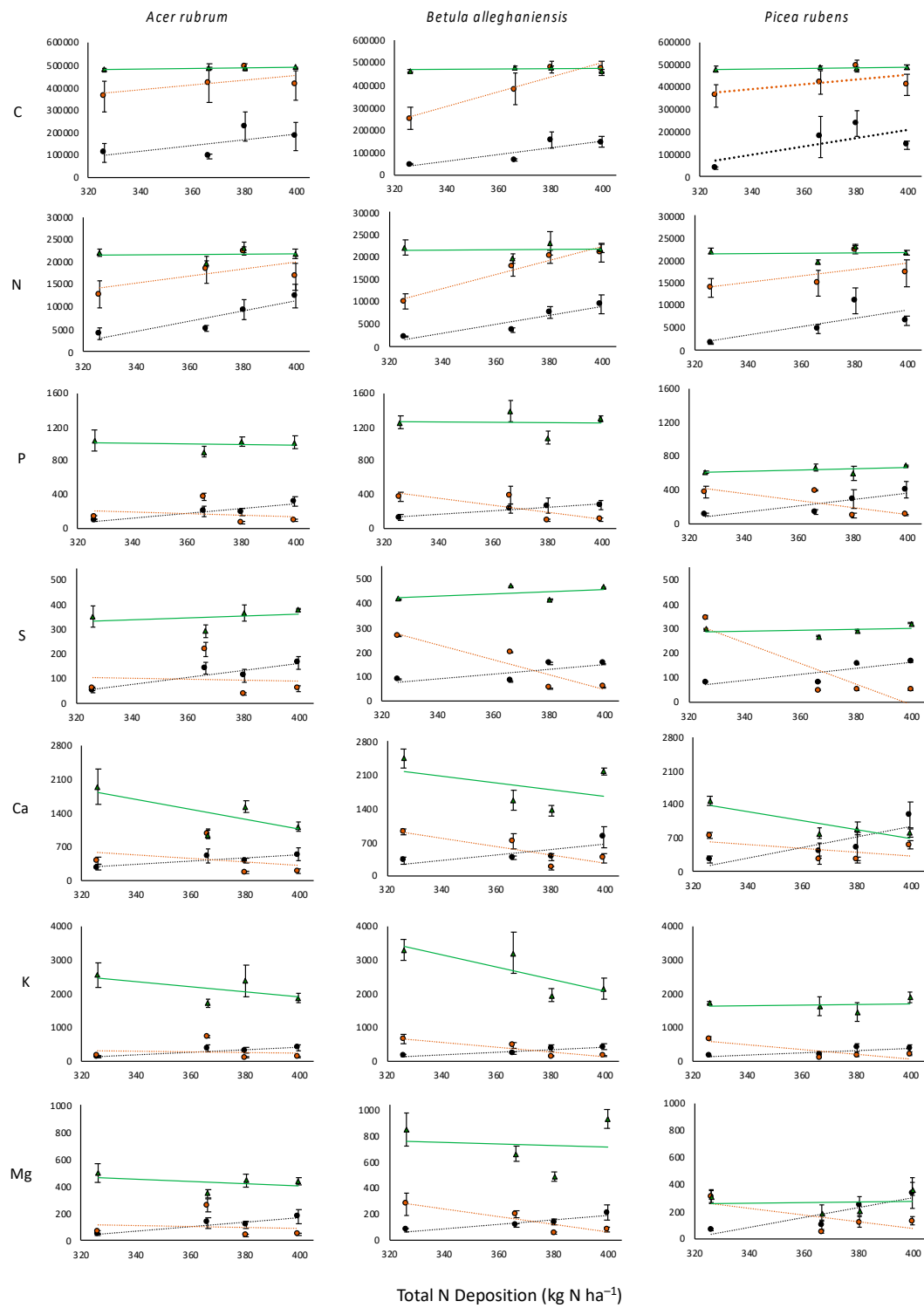
**Figure S1.** Annual variation in total N deposition from 1985–2012 at Flat Ridge (FLR), McGowan Mountain (MCG), Cranberry Glades (CGL), and Little Spruce Bog (LSB).



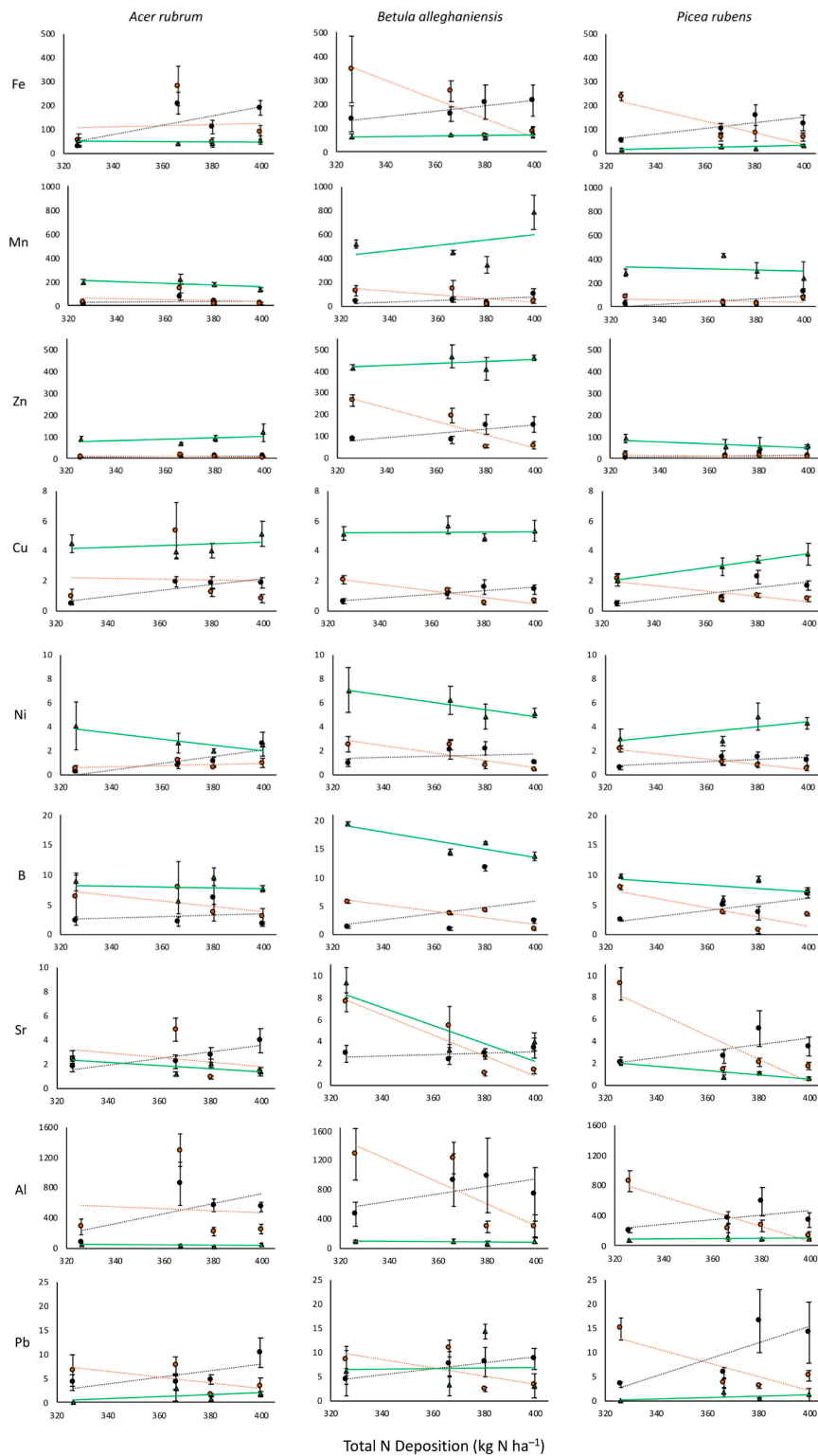
**Figure S2.** Soil pH as functions of soil fraction and N deposition (left) and overstory tree species (right).



**Figure S3.** Soil Ca:Al molar ratios by N deposition and overstory tree species for organic (left) and mineral (right) fractions.



**Figure S4a.** Soil macro-element concentrations in foliage, and both organic and mineral soil fractions (mg g<sup>-1</sup>) by forest tree species and modeled estimates of historic N deposition.



**Figure S4b.** Soil micro-element concentrations in foliage, and both organic and mineral soil fractions (mg g<sup>-1</sup>) by forest tree species and modeled estimates of historic N deposition.