

Supporting Information

Max Ernst's *Woman, Old Man, and Flower* (1923–24): a painting in four states revealed by technical imaging

Ana Martins, Ellen Davis and Talia Kwartler

The David Booth Conservation Department, The Museum of Modern Art, 11 W 53rd Street, New York, 10019 NY, USA

Figure S1: Elemental distribution maps obtained by MAXRF for the most abundant chemical elements: Zn, Pb, Fe, Cu, As, Cr, Ca and Co.





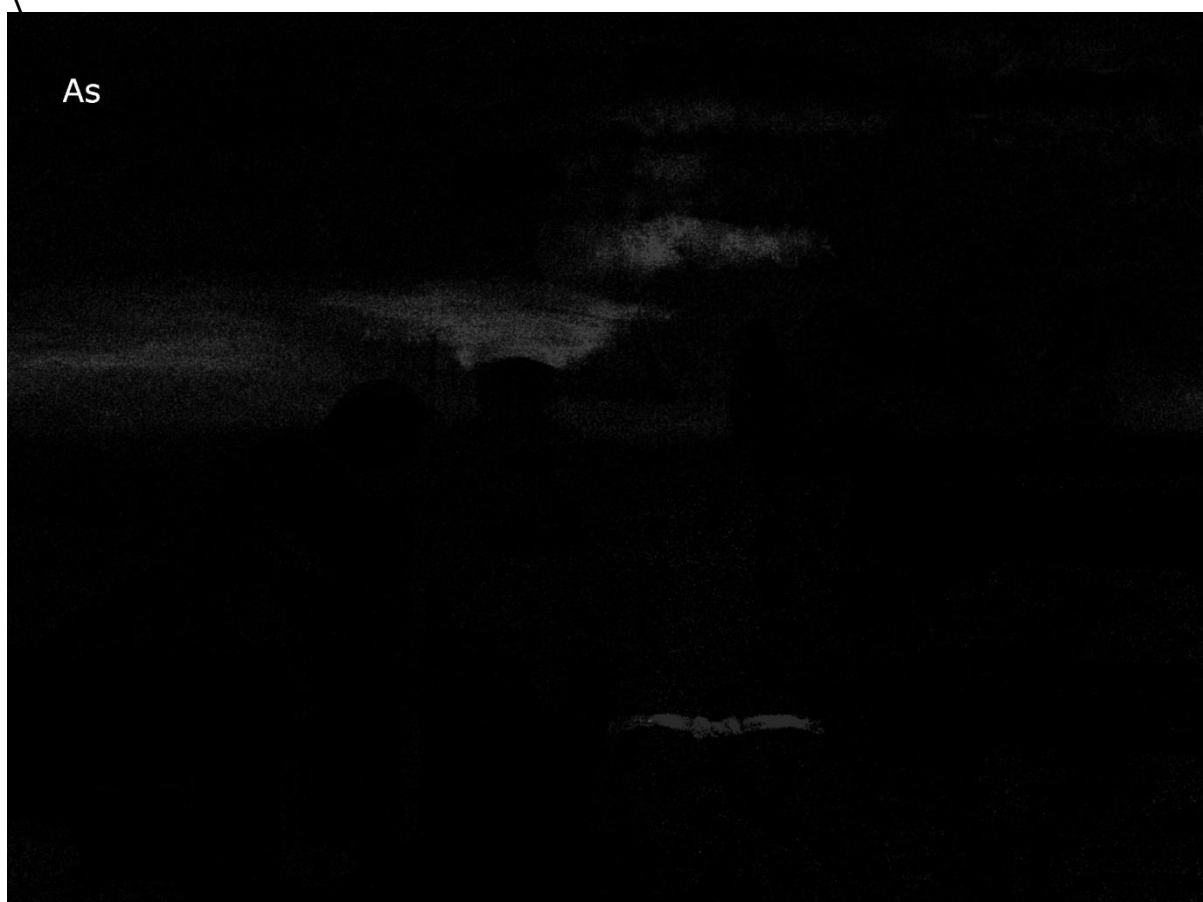


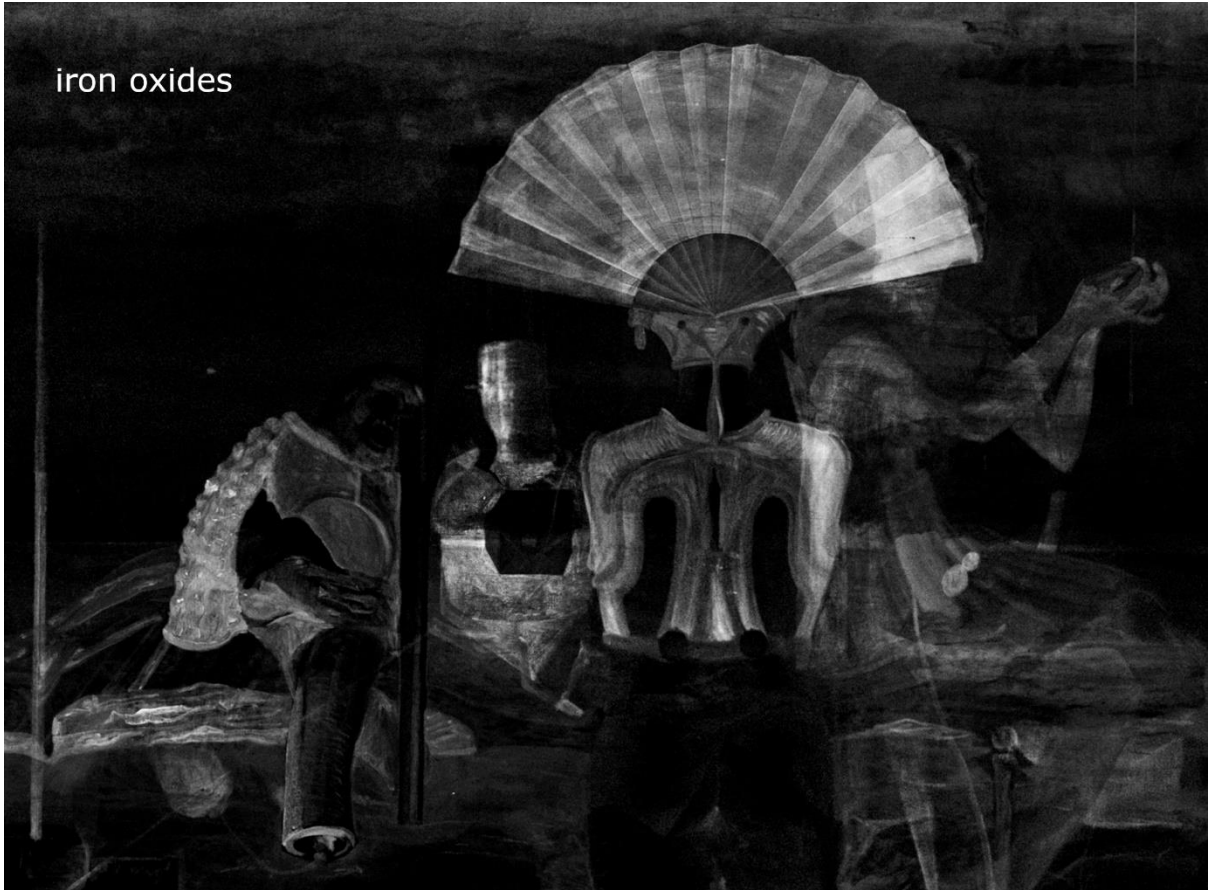




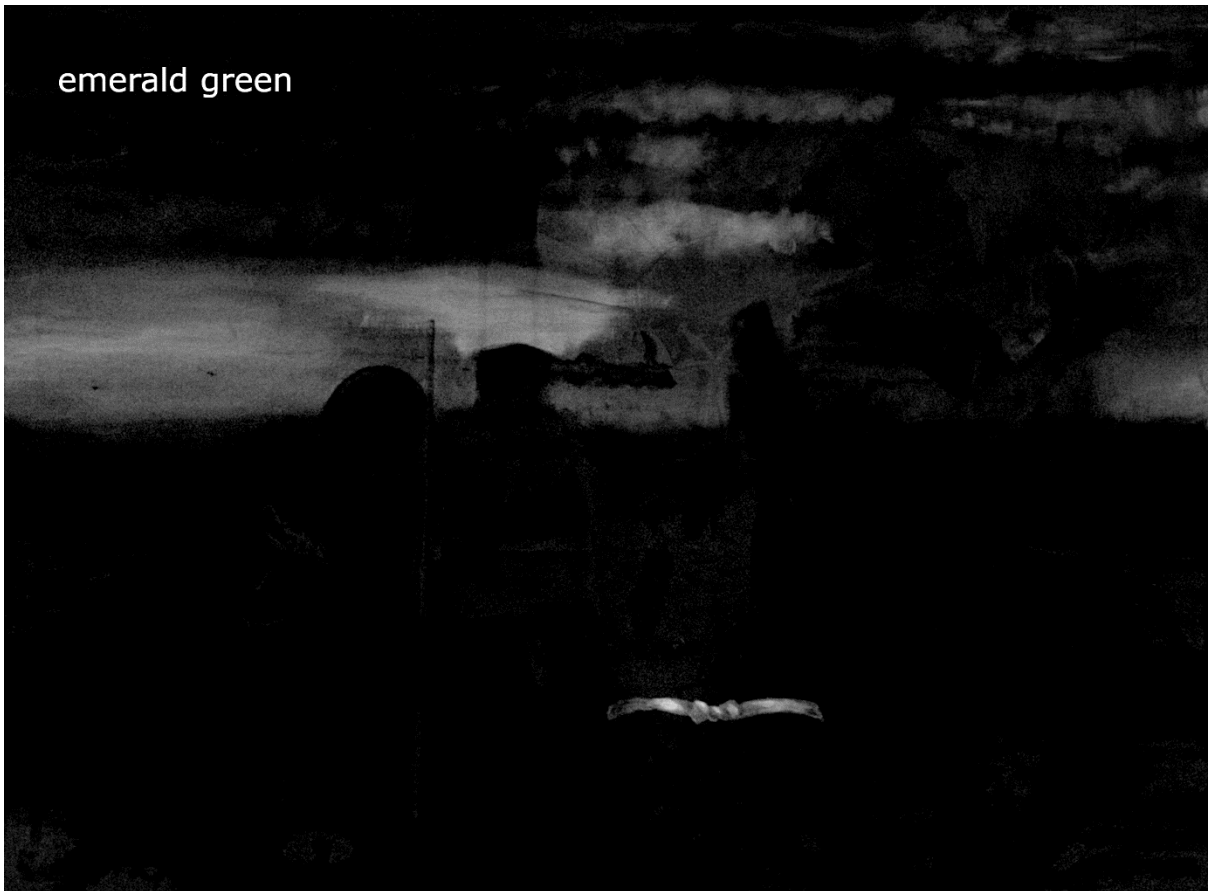
Figure S2: Selection of pigment distribution maps obtained by MCR-ALS processing of the MAXRF data: zinc white, lead white, iron oxides, emerald green, bone black, chromium based green, cobalt blue, cadmium yellow, cadmium red and vermillion.



iron oxides



emerald green



bone black
(and conservation intervention)

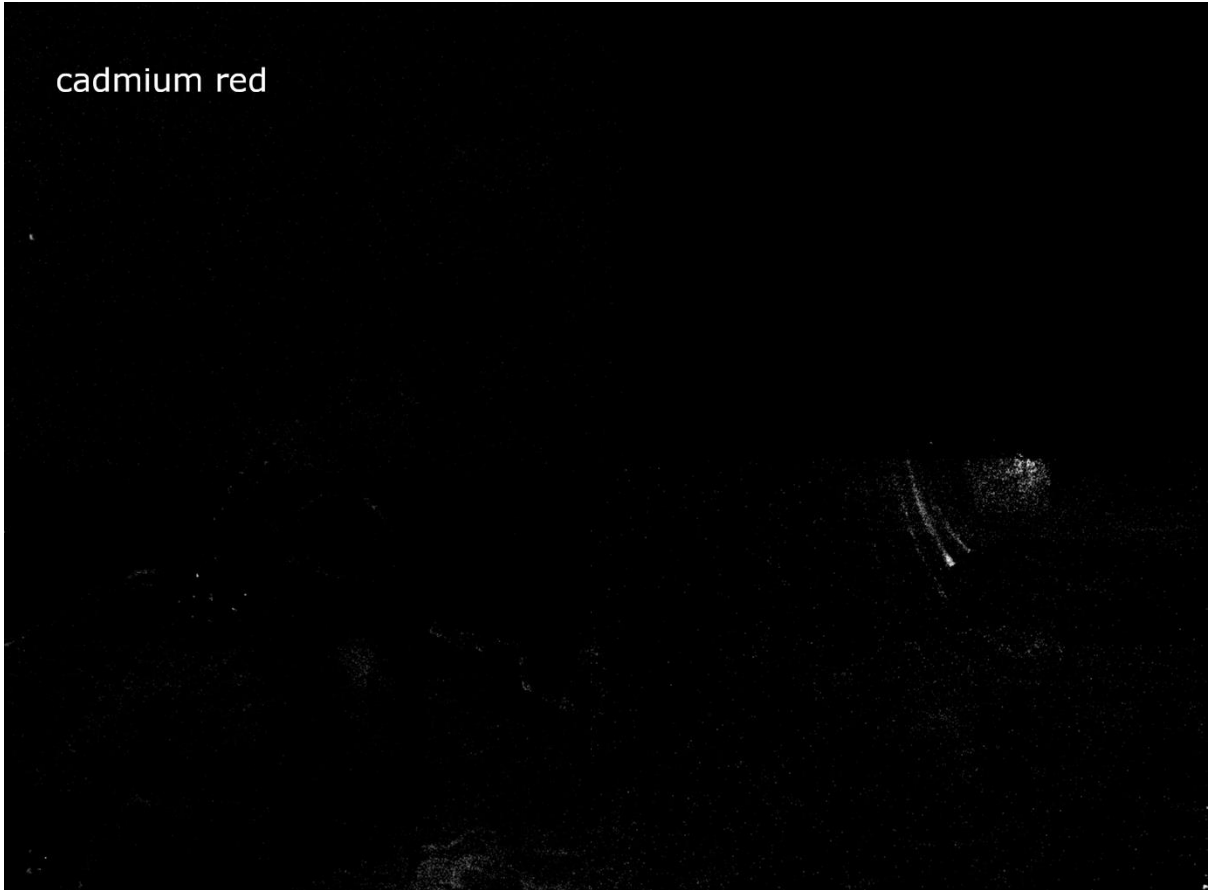


chrome based green





cadmium red



vermilion

