

SUPPLEMENTARY MATERIALS

A new unnatural amino acid derived from the modification of 4'-(p-tolyl)-2,2':6',2''-terpyridine and its mixed ligand complexes with ruthenium: synthesis, characterization, and photophysical properties.

Konstantinos Ypsilantis^a, Antonia Garypidou^a, Andreas Gikas^a, Alexandros Kiapekos^a, Jhon C. Plakatouras and Achilleas Garoufis^{a,b*}

^a Department of Chemistry, University of Ioannina, GR-45110 Ioannina, Greece.

^b University Research Centre of Ioannina (URCI), Institute of Materials Science and Computing, Ioannina, Greece.

TABLE OF CONTENTS

FIGURE S1: ¹H NMR spectrum of (**4**) with proton assignments in dmso-d₆ at 298K.

FIGURE S2: ¹H NMR spectrum of (**5**) with proton assignments in dmso-d₆ at 298K.

FIGURE S3: ¹H NMR spectrum of (**6**) with proton assignments in dmso-d₆ at 298K.

FIGURE S4: ¹H NMR spectrum of (**7**) with proton assignments in dmso-d₆ at 298K.

FIGURE S5: ¹H NMR spectrum of (**8**) with proton assignments in dmso-d₆ at 298K.

FIGURE S6: ¹H NMR spectrum of (**9**) with proton assignments in dmso-d₆ at 298K.

FIGURE S7: ¹H NMR spectrum of (**10**) with proton assignments in dmso-d₆ at 298K.

FIGURE S8: ¹H NMR spectrum of (**11**) with proton assignments in dmso-d₆ at 298K.

FIGURE S9: High-resolution ESI MS spectrum of (**4**).

FIGURE S10: High-resolution ESI MS spectrum of (**5**). Inset the calculated and the experimental (A) and the calculated (B) isotopic patterns of the cation.

FIGURE S11: High-resolution ESI MS spectrum of (**6**).

FIGURE S12: High-resolution ESI MS spectrum of (**7**). Inset the calculated and the experimental (A) and the calculated (B) isotopic patterns of the cation.

FIGURE S13: High-resolution ESI MS spectrum of (**8**). Inset the calculated and the experimental (A) and the calculated (B) isotopic patterns of the cation.

FIGURE S14: High-resolution ESI MS spectrum of (**9**). Inset the calculated and the experimental (A) and the calculated (B) isotopic patterns of the cation.

FIGURE S15: High-resolution ESI MS spectrum of (**10**).

FIGURE S16: High-resolution ESI MS spectrum of (**11**).

FIGURE S17. Normalized UV spectra of (**1**) and (**2**) in acetonitrile.

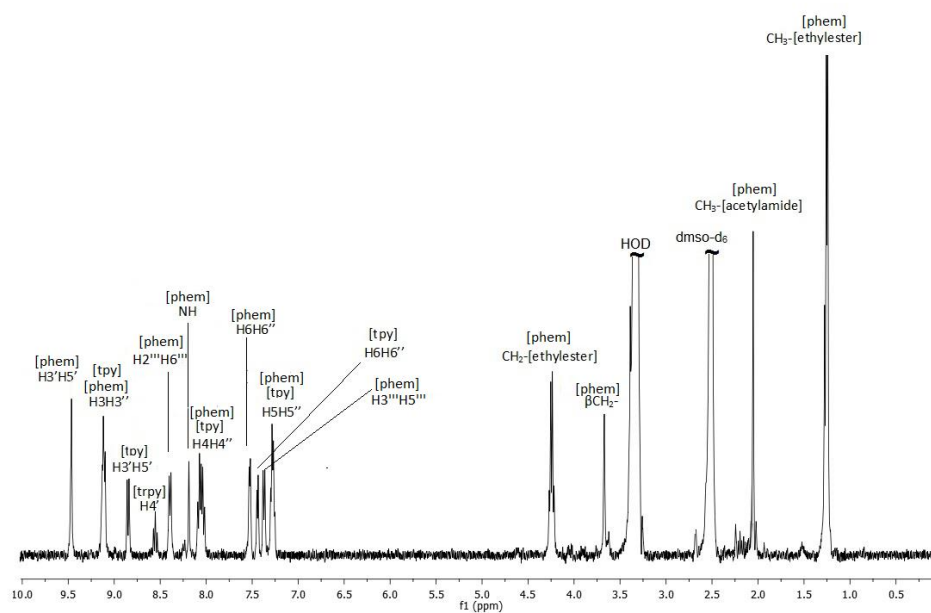


FIGURE S1: ^1H NMR spectrum of (**4**) with proton assignments in dmsO-d_6 at 298K.

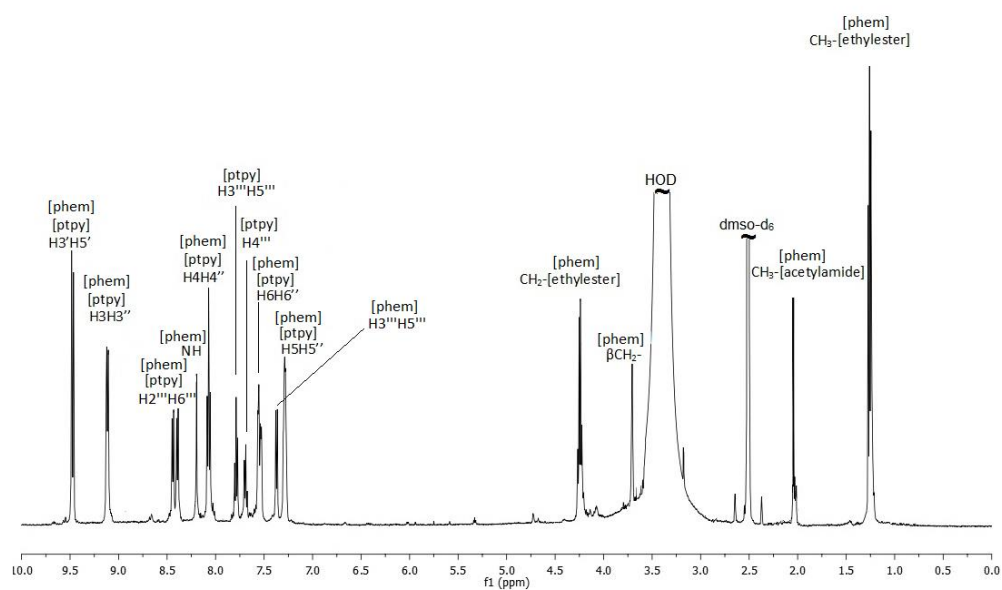


FIGURE S2: ^1H NMR spectrum of (**5**) with proton assignments in dmsO-d_6 at 298K.

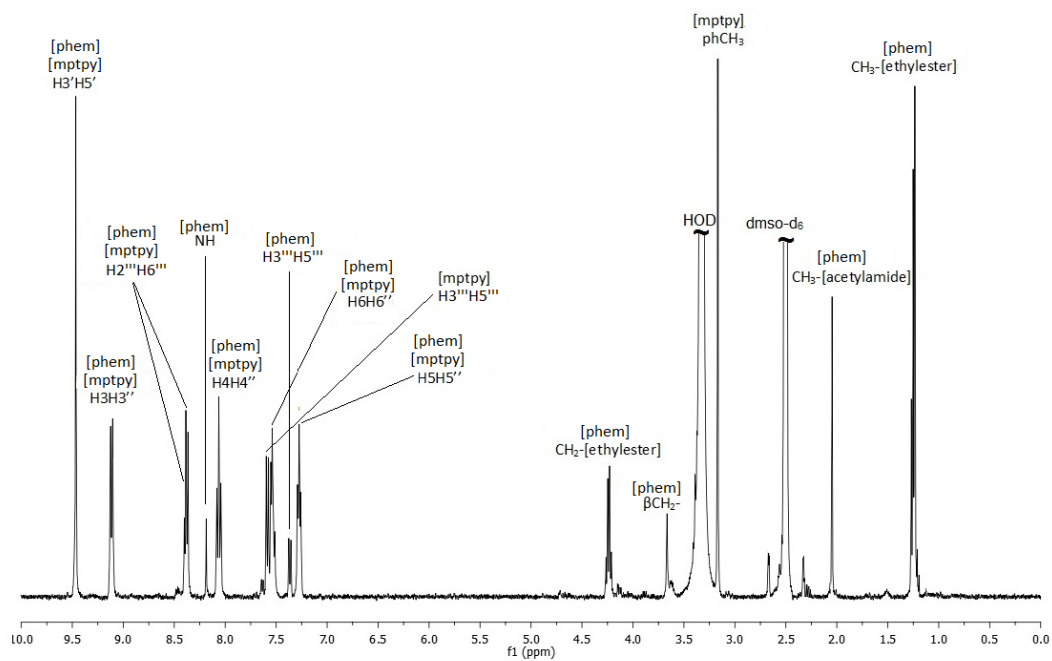


FIGURE S3: ^1H NMR spectrum of (6) with proton assignments in dms0-d_6 at 298K.

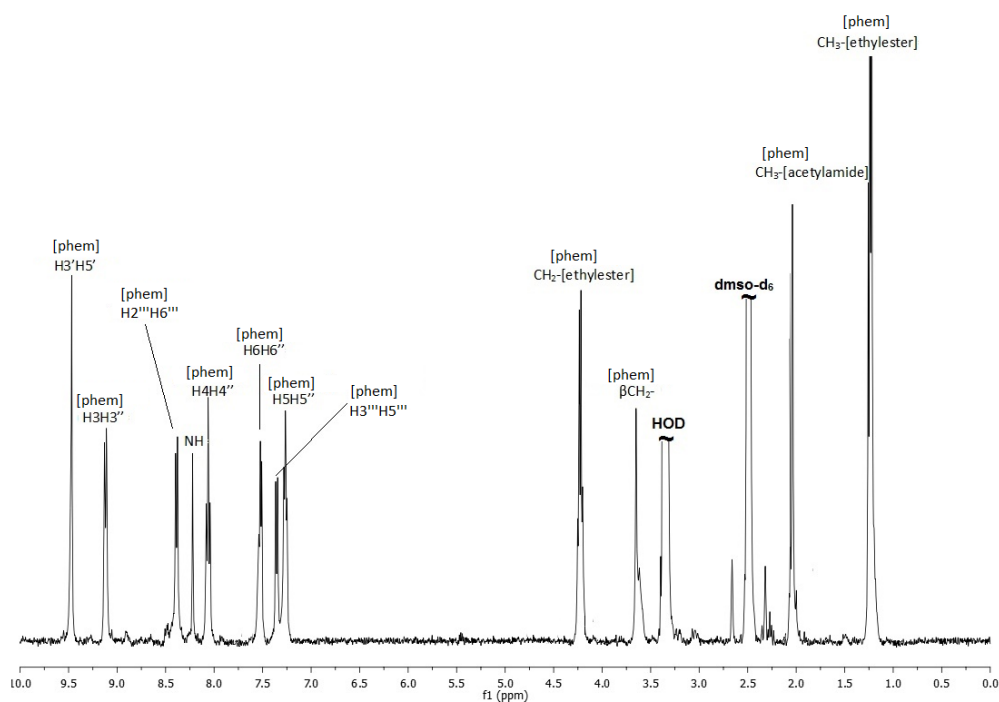


FIGURE S4: ^1H NMR spectrum of (7) with proton assignments in dms0-d_6 at 298K.

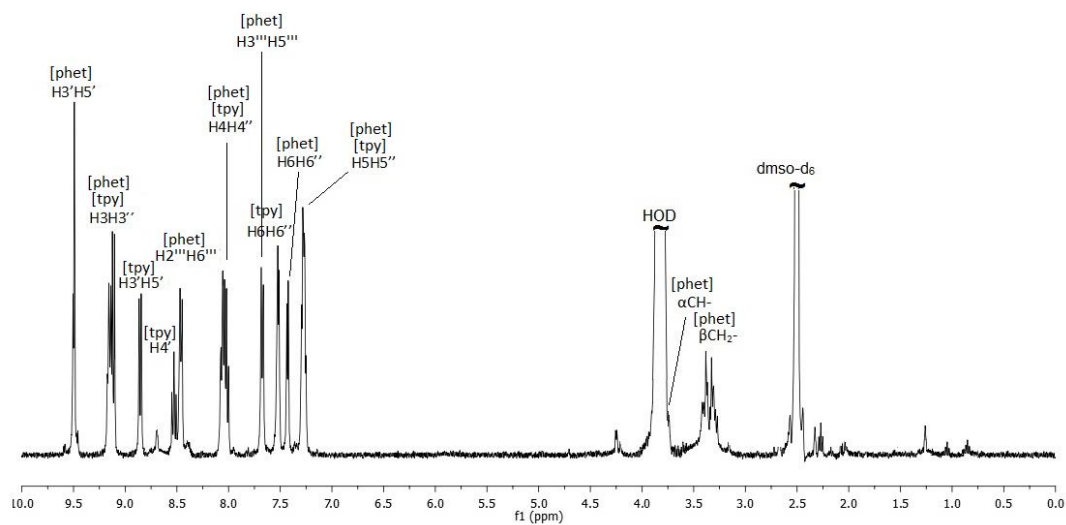


FIGURE S5: ^1H NMR spectrum of (8) with proton assignments in dms0-d_6 at 298K.

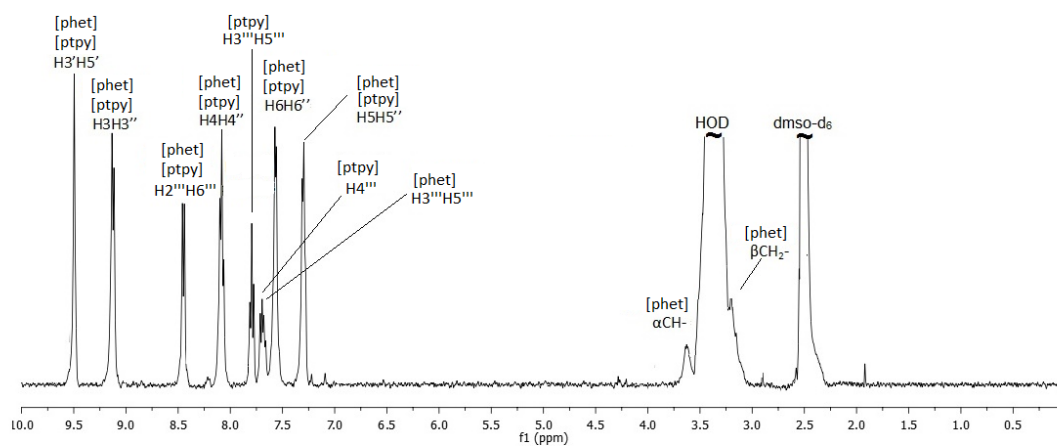


FIGURE S6: ^1H NMR spectrum of (9) with proton assignments in dms0-d_6 at 298K.

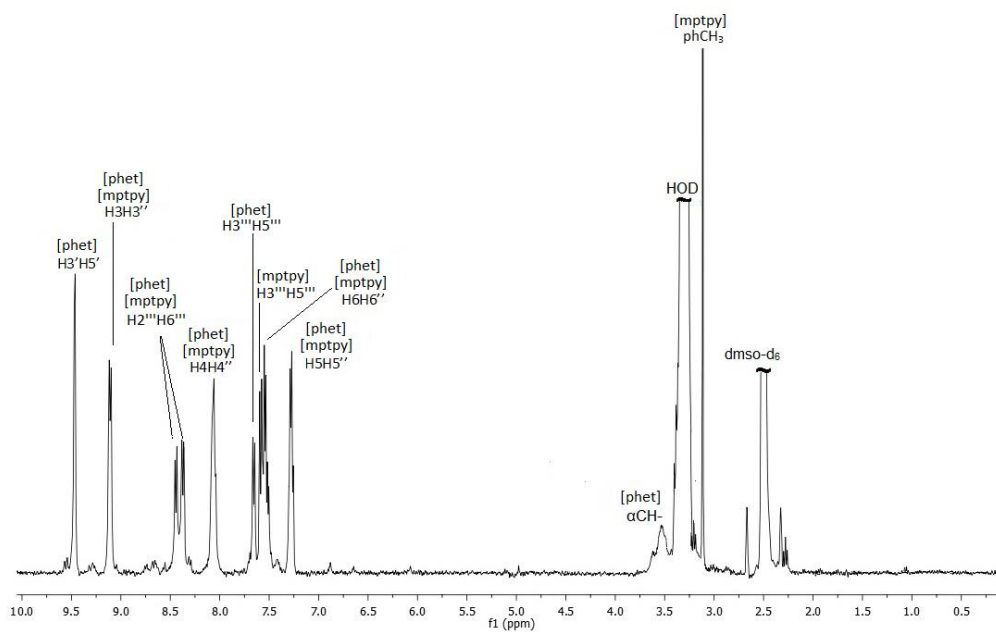


FIGURE S7: ^1H NMR spectrum of (**10**) with proton assignments in dms0-d_6 at 298K.

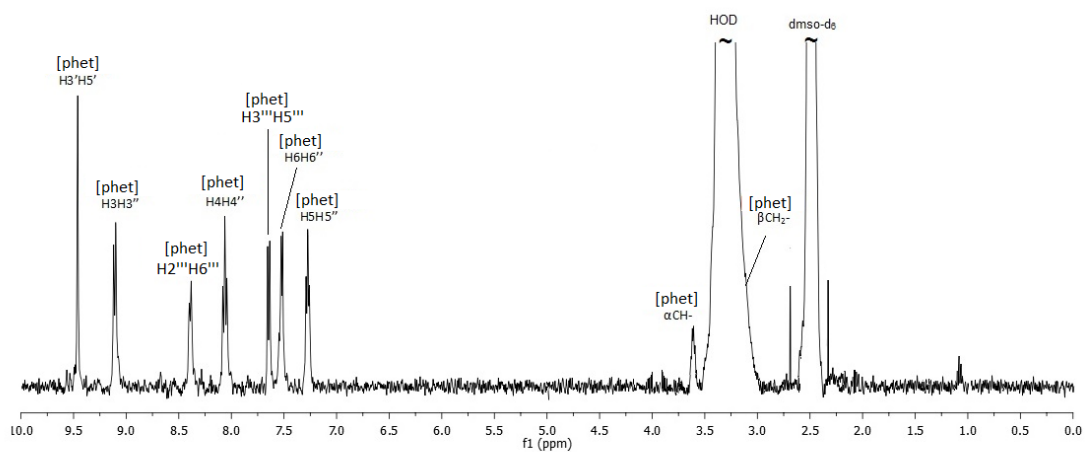


FIGURE S8: ^1H NMR spectrum of (**11**) with proton assignments in dms0-d_6 at 298K.

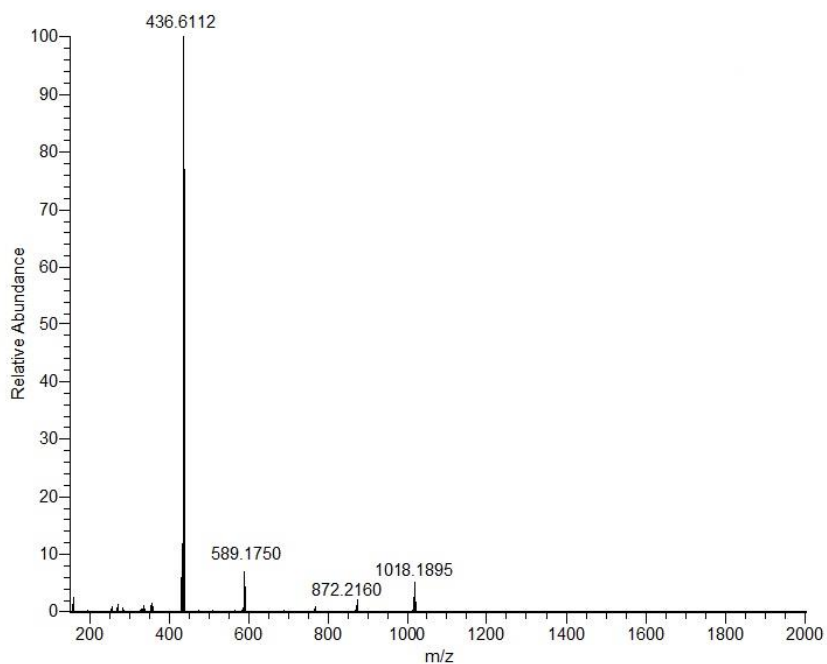


FIGURE S9: High-resolution ESI MS spectrum of (4).

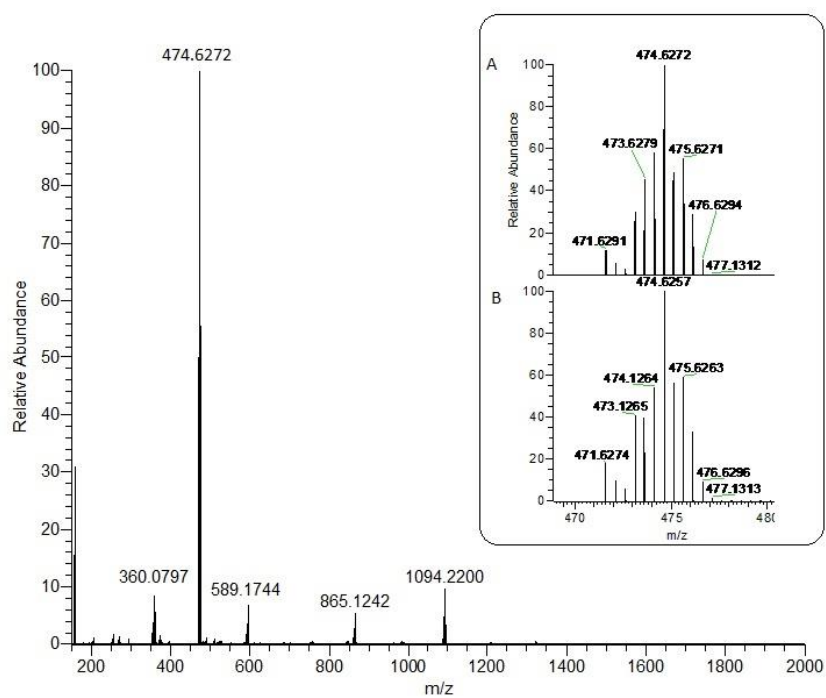


FIGURE S10: High-resolution ESI MS spectrum of (5). Inset the calculated and the experimental (A) and the calculated (B) isotopic patterns of the cation.

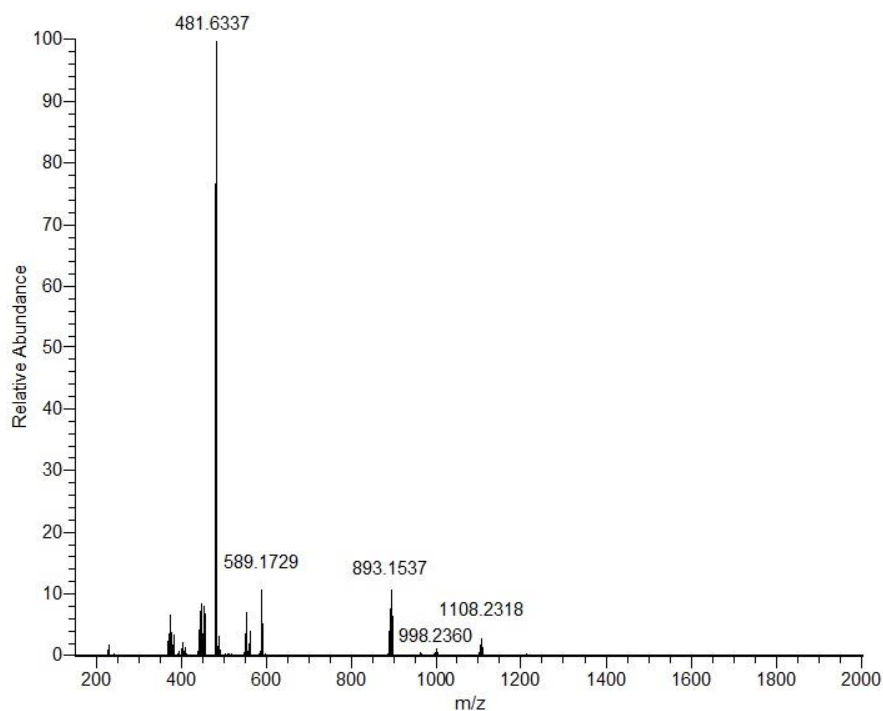


FIGURE S11: High-resolution ESI MS spectrum of (6).

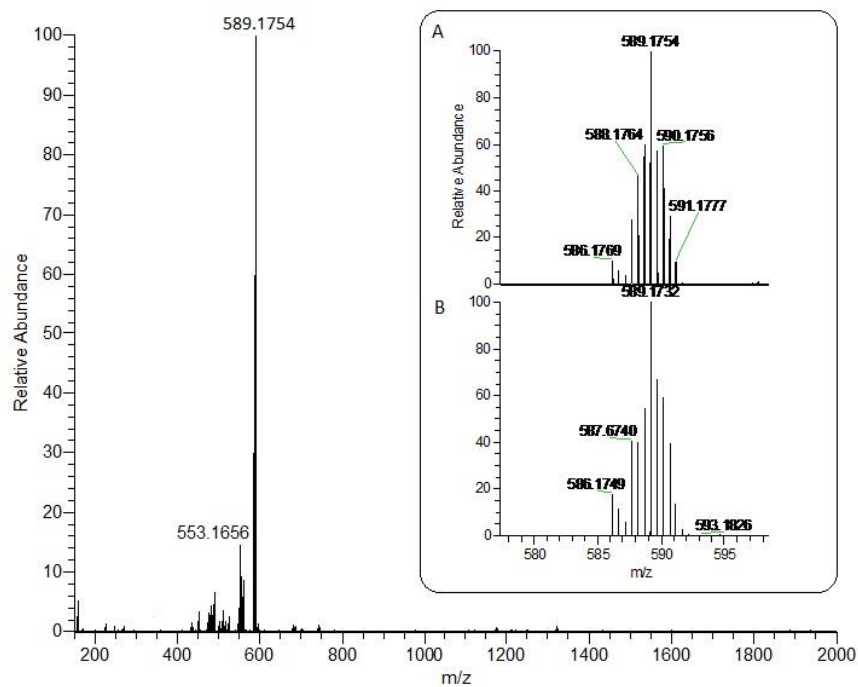


FIGURE S12: High-resolution ESI MS spectrum of (7). Inset the calculated and the experimental (A) and the calculated (B) isotopic patterns of the cation.

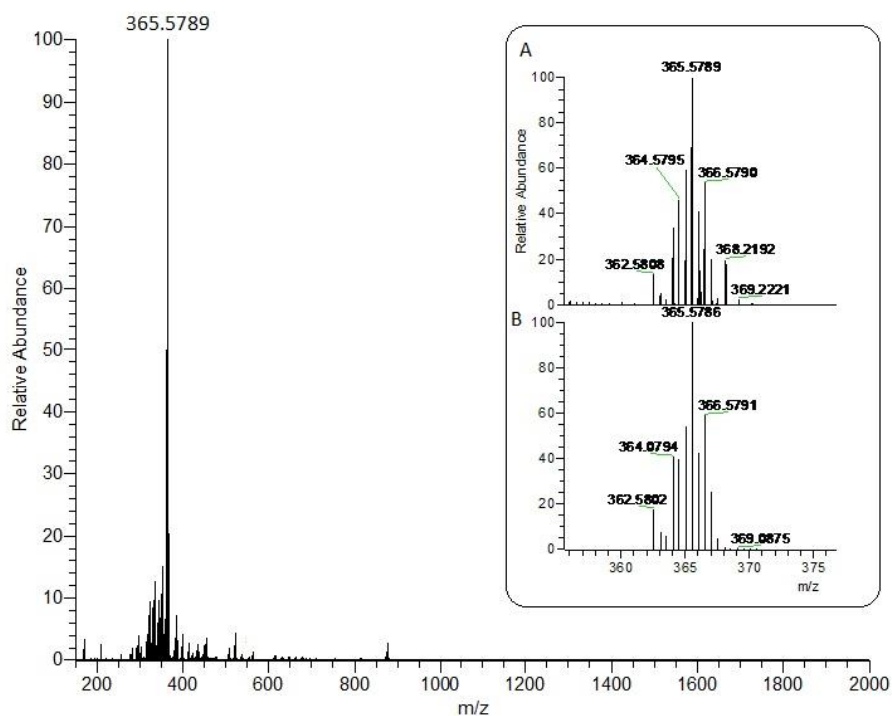


FIGURE S13: High-resolution ESI MS spectrum of (**8**). Inset the calculated and the experimental (A) and the calculated (B) isotopic patterns of the cation.

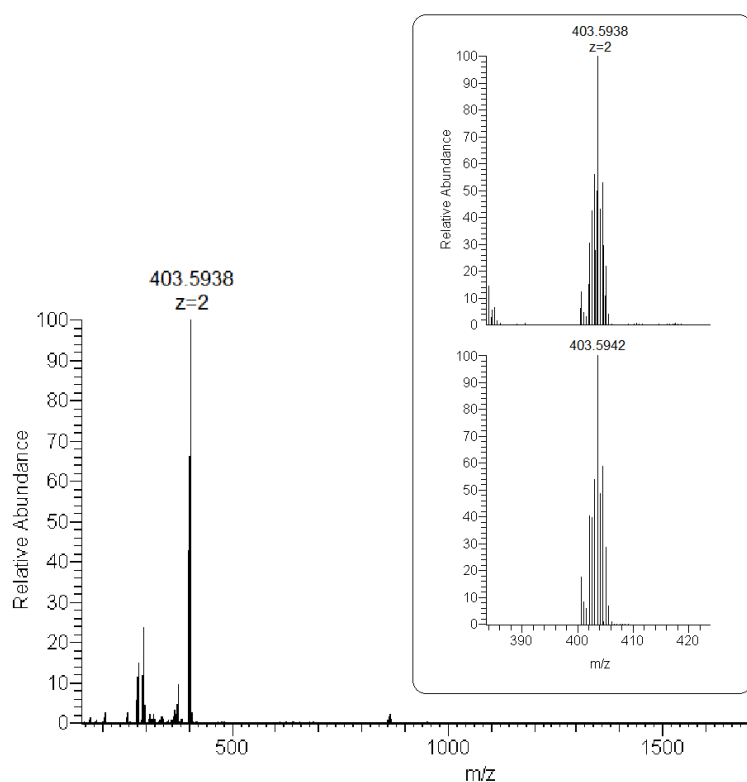


FIGURE S14: High-resolution ESI MS spectrum of (**9**). Inset the calculated and the experimental (A) and the calculated (B) isotopic patterns of the cation.

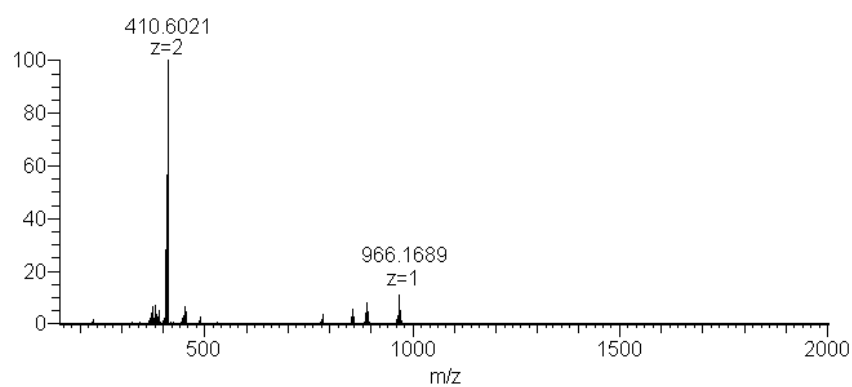


FIGURE S15: High-resolution ESI MS spectrum of (10).

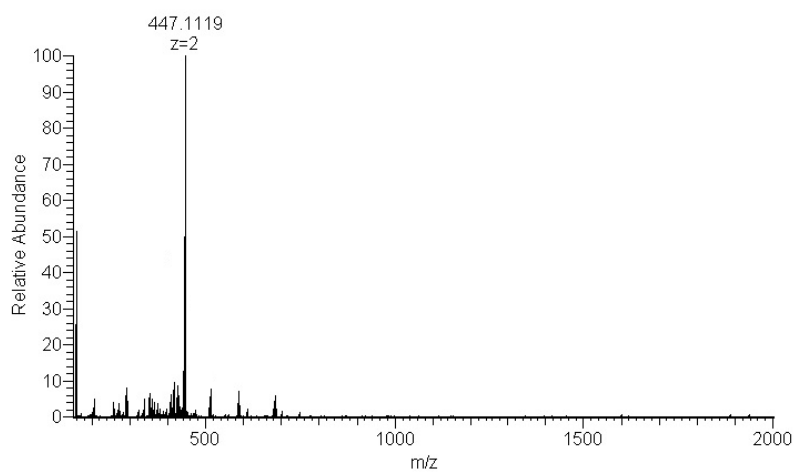


FIGURE S16: High-resolution ESI MS spectrum of (11).

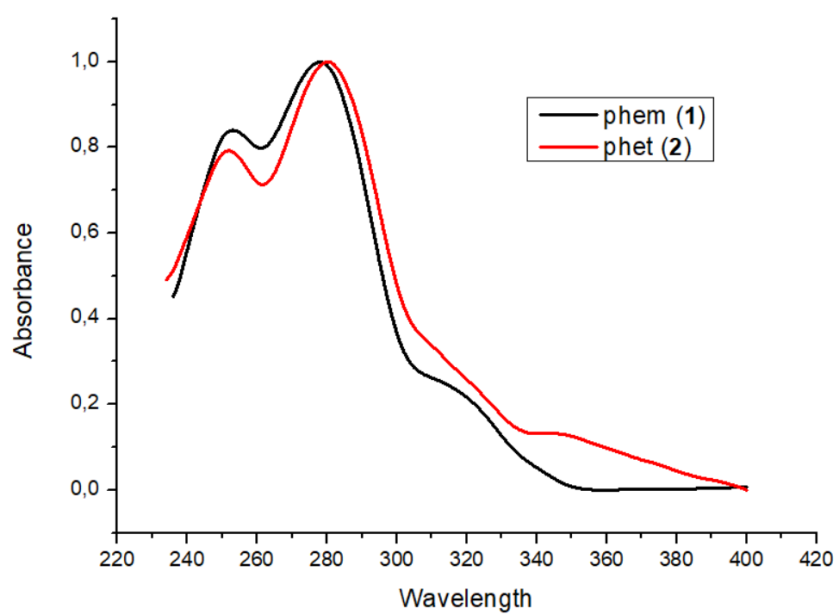


FIGURE S17. Normalized UV spectra of **(1)** and **(2)** in acetonitrile.