

# The Effects of Elevated Temperatures on the Reproductive Biology of a Mediterranean Coral, *Oculina patagonica*

Tamar Shemesh <sup>1,†</sup>, Shani Levy <sup>2,†</sup>, Abigail Einbinder <sup>3</sup>, Itai Kolsky <sup>1,4</sup>, Jessica Bellworthy <sup>1</sup> and Tali Mass <sup>1,4,\*</sup>

<sup>1</sup> Department of Marine Biology, The Leon H. Charney School of Marine Sciences, University of Haifa, Haifa 3103301, Israel; tamarpalti@gmail.com (T.S.); itaikolsky@gmail.com (I.K.); jhbellworthy@gmail.com (J.B.)

<sup>2</sup> Centre for Genomic Regulation (CRG), Barcelona Institute of Science and Technology (BIST), 08028 Barcelona, Spain; levyshani78@gmail.com

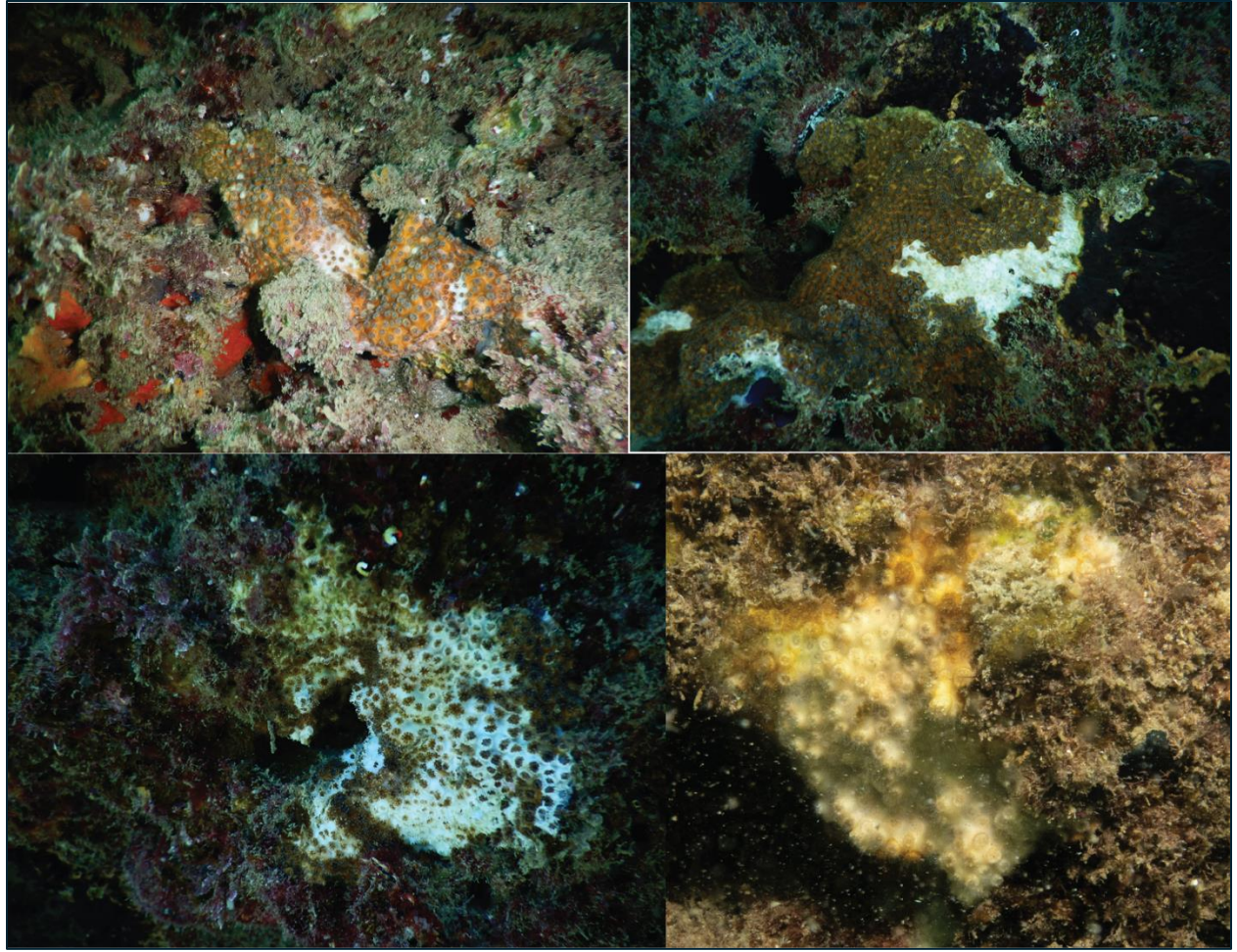
<sup>3</sup> Marine Mariculture Department, Ramot-Yam High School, Meevot-Yam Youth Village, Michmoret 4029600, Israel; abigaileinbinder@gmail.com

<sup>4</sup> Morris Kahn Marine Research Station, The Leon H. Charney School of Marine Sciences, University of Haifa, Haifa 3780400, Israel

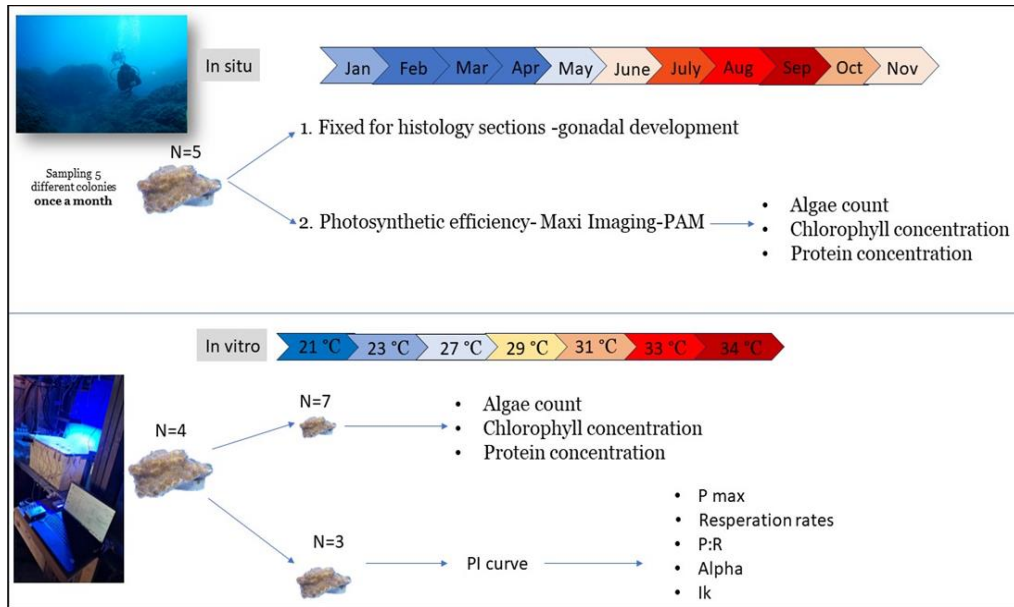
\* Correspondence: tmass@univ.haifa.ac.il

† These authors contributed equally to this work.

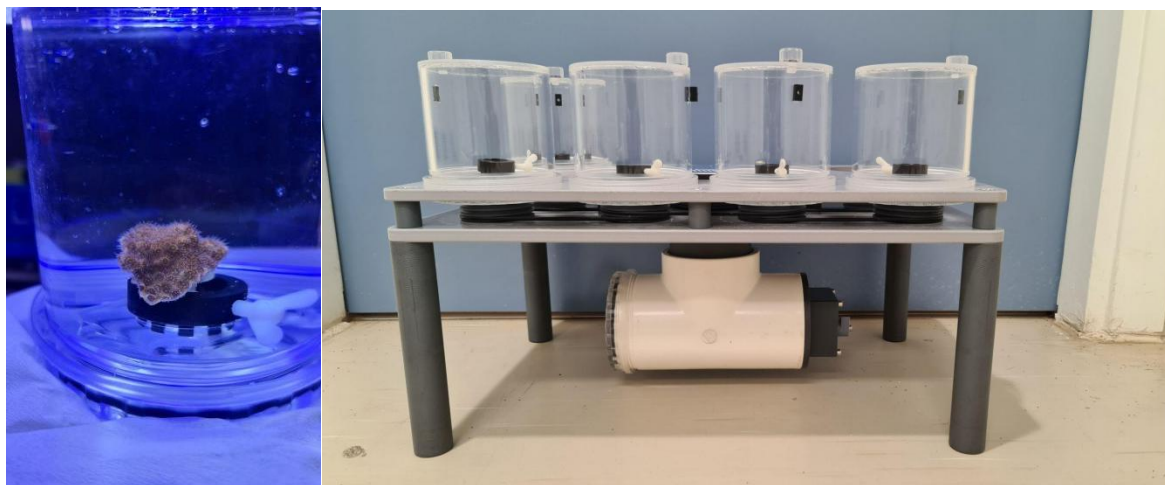
## Supplement Figures



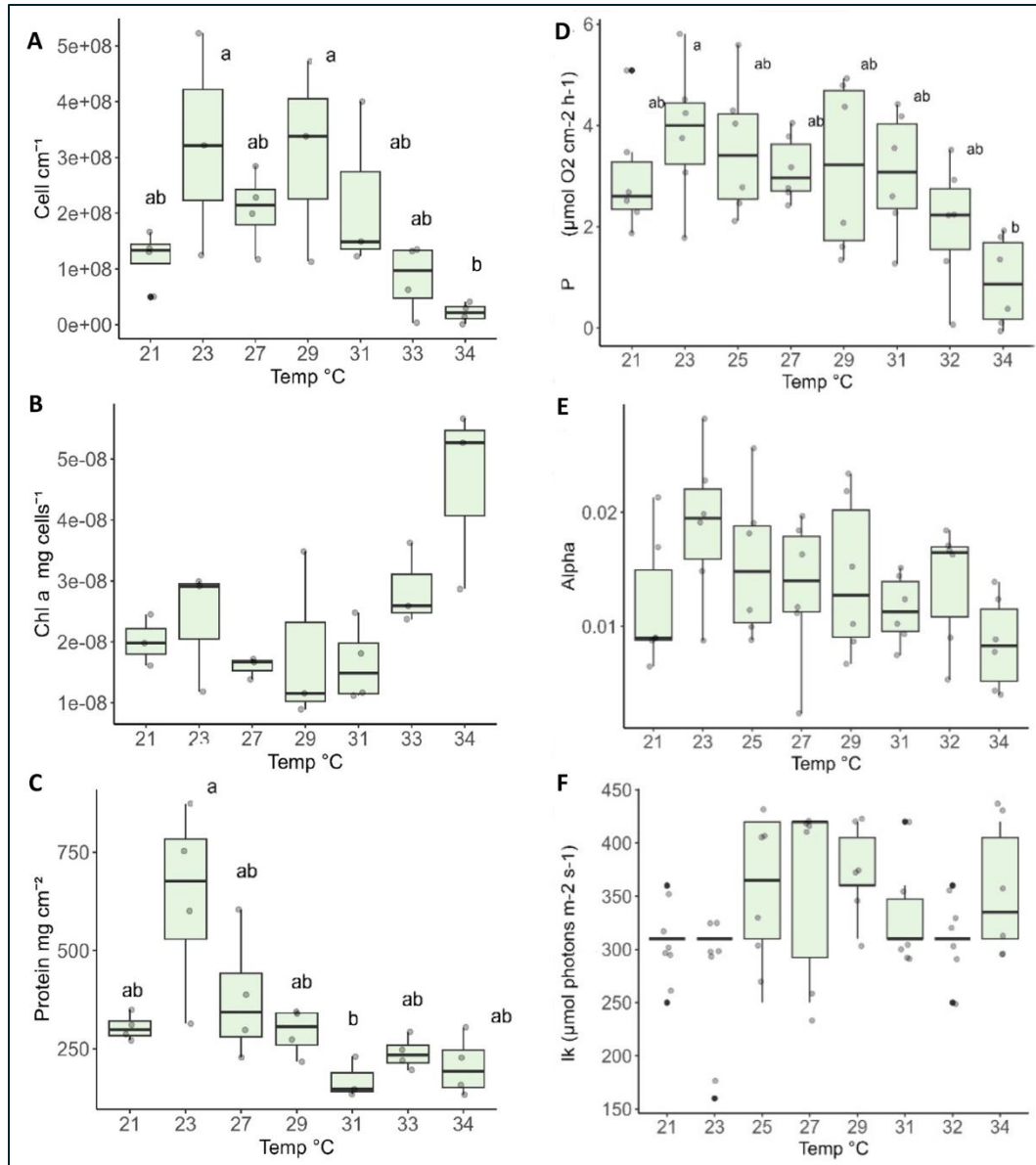
**Figure S1.** Seasonal bleaching *Oculina patagonica* at 4-6 m depth during June-August.



**Figure S2.** Experimental design: the experiment from the sea (in situ) throughout the year (top) and the thermal tolerance experiment in the laboratory (in vitro) (bottom).



**Figure S3.** Respiration chambers: An *Oculina patagonica* fragment is mounted inside one sealed chamber; in the groove below the fragment, there is a space for a magnetic stirrer (left). A respirometer stand with 8 identical sealed chambers is inserted on an underwater stirring table (AIMS) (right).



**Figure S4.** Physiological analyses of *O. patagonica* thermal stress experiment (A-C). **(A)** Algal cells density per skeletal surface area. **(B)** Chlorophyll concentration per algal cell. **(C)** Protein concentration per skeletal surface area. Thermal stress experiment photosynthesis performance parameters (D-F). **(D)** Photosynthesis at 250 PAR ( $\mu\text{mol O}_2 \text{ m}^{-2} \text{ h}^{-1}$ ). **(E)** Photosynthetic efficiency at light limiting irradiances. **(F)** Saturating irradiance ( $\mu\text{mol m}^{-2} \text{ s}^{-1}$ ). Horizontal black lines within boxes are median values, and box limits represent first and third quartiles. Whiskers represent 1.5 times the interquartile range. Round black points are individual sample data. Different lower-case letters indicate statistically significant differences between temperatures (adjusted  $p < 0.05$ ). Lower-case letters are absent from graphs where there are no statistically significant differences between temperatures.