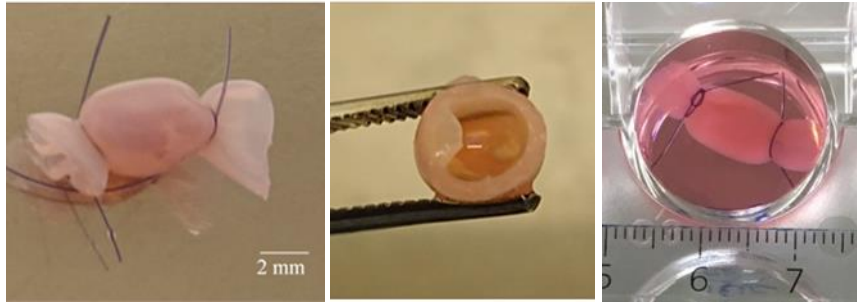
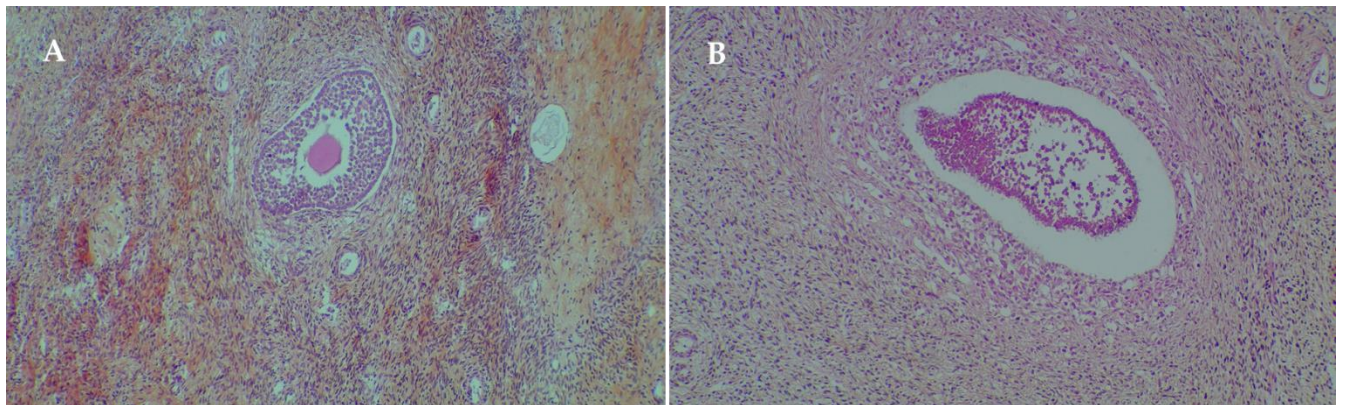


# A New Bioreactor to Promote Human Follicular Growth with or without Activin A in Transgender Men

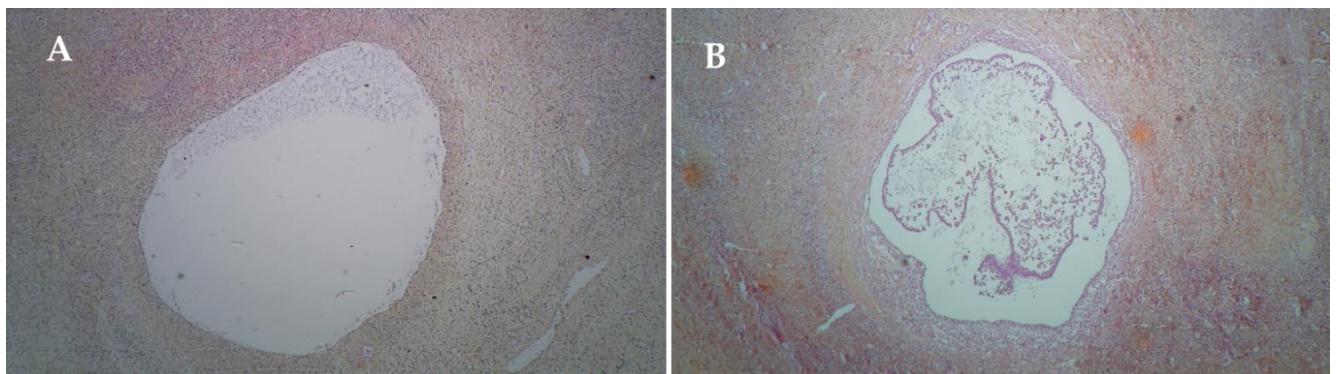
## Supplementary files



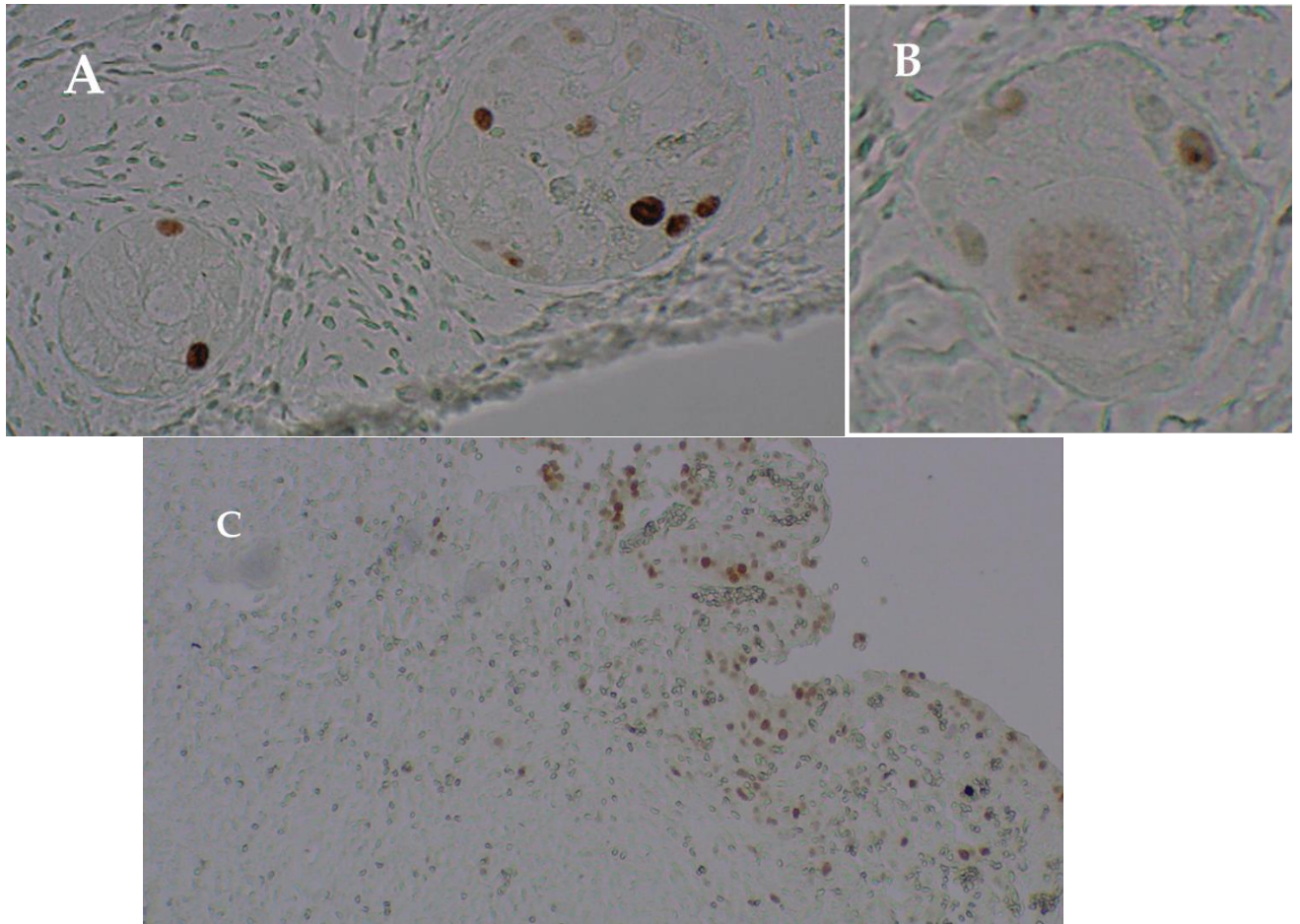
**Figure S1: Chitosan bioreactor.** From left to right: i) bioreactor containing ovarian tissue and tied at each end with suture thread; ii) cross-section of the bioreactor showing the inner cavity and wall; iii) culture well with bioreactor in culture medium. *Photographs published in a previous article [12].*



**Figure S2: Secondary follicles after 22 days of culture.** Slices colored with hematoxylin-eosin-safran at magnification \*400. A: intact follicle, ovarian tissue cultured in 3D structure. B: altered follicle (cells detachment), ovarian tissue cultured without.



**Figure S3: Tertiary follicles after 22 days of culture.** Slices colored with hematoxylin-eosin-safran at magnification \*400. A: intact follicle, ovarian tissue cultured in 3D structure. B: altered follicle (cells detachment), ovarian tissue cultured in 3D structure.



**Figure S4: Ki67 immunostaining.** A: Slice at day 22 of culture (magnification \*400). B: Slices at day 20 of culture (follicular cells and an oocyte were positive – magnification \*400). C: Slices at day 22 of culture, positive stromal cells (magnification \*100). Positive (proliferating) cells have a brown color.