

Figure S1. GC-MS identification map of PLs. (a). 1200W, (b). 1400W, (c). 1600W, (d). 1800W, (e). 2000W, (f). 2200W, (g). 2400W.

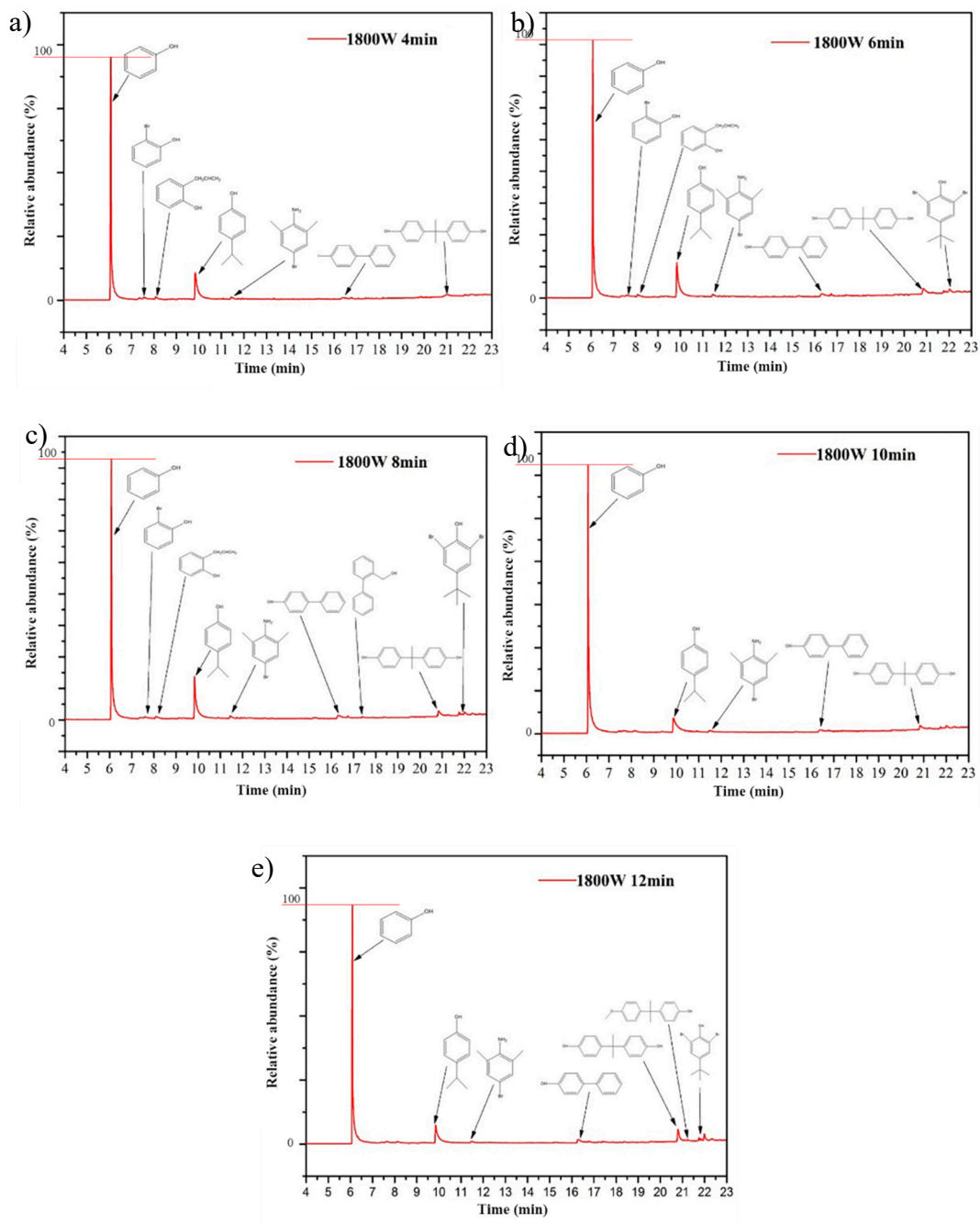


Figure S2. GC-MS pattern of the PLs for 4-12 min. (a). 4 min, (b). 6 min, (c). 8 min, (d). 10 min, (e). 12min.

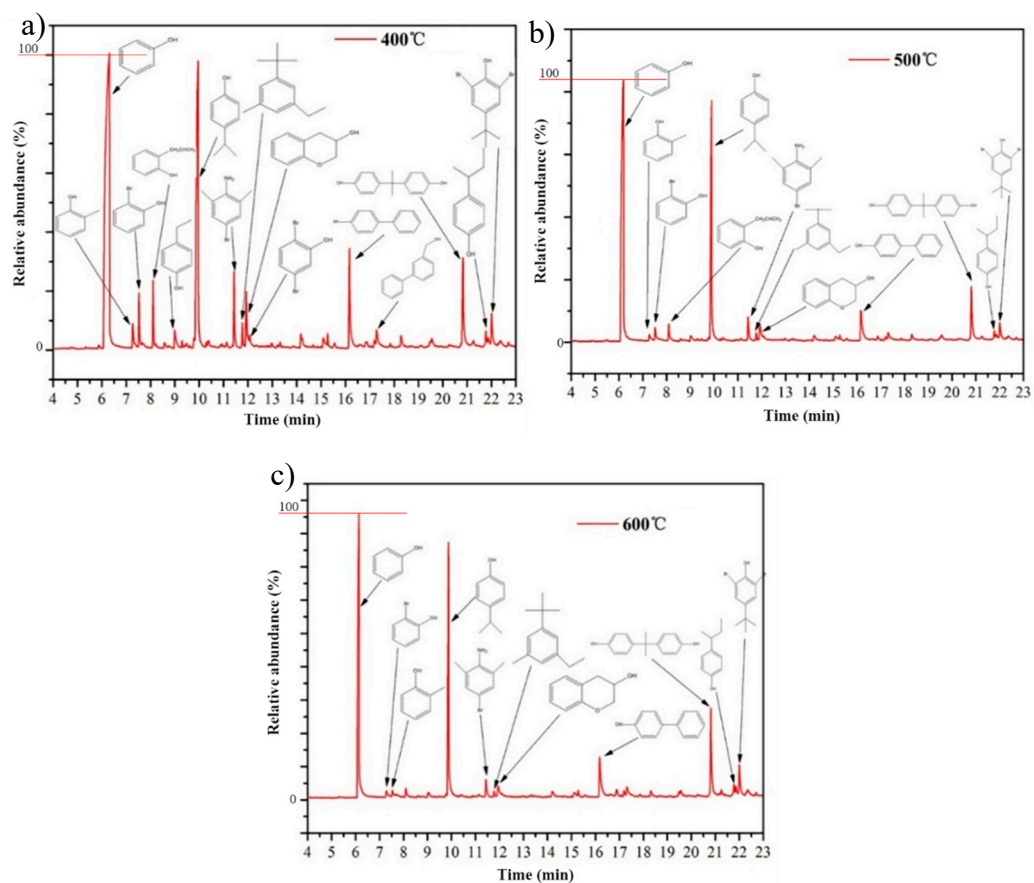


Figure S3. GC-MS spectrum of PLs at 400-600°C in tube furnace. (a). 400°C, (b). 500°C, (c). 600°C.