

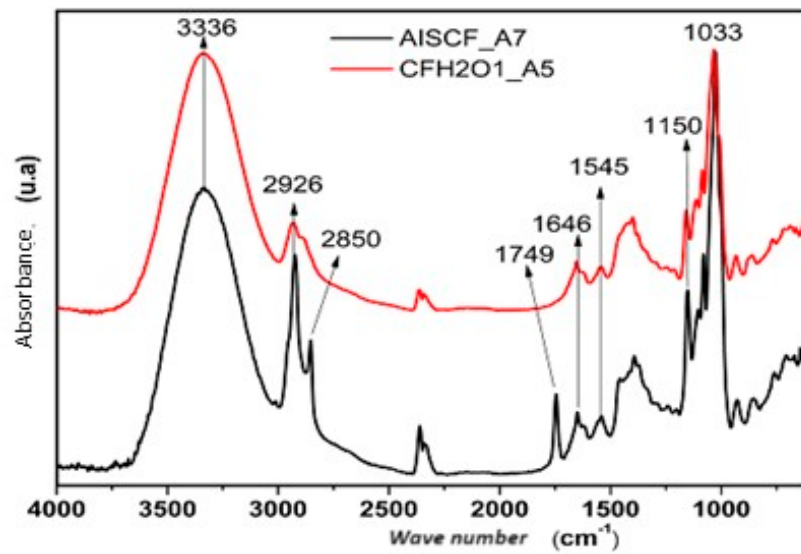
**Table S1.** Biodegradable film composition ingredients.

Ingredients	Formulation	
	FF	SFF
Starch (g)	48	48
Potassium Sorbate (g)	3.2	3.2
Glycerol (g)	14.4	14.4
Sugarcane fibre (g)	0	2
Distilled water (mL)	1.60	1.60

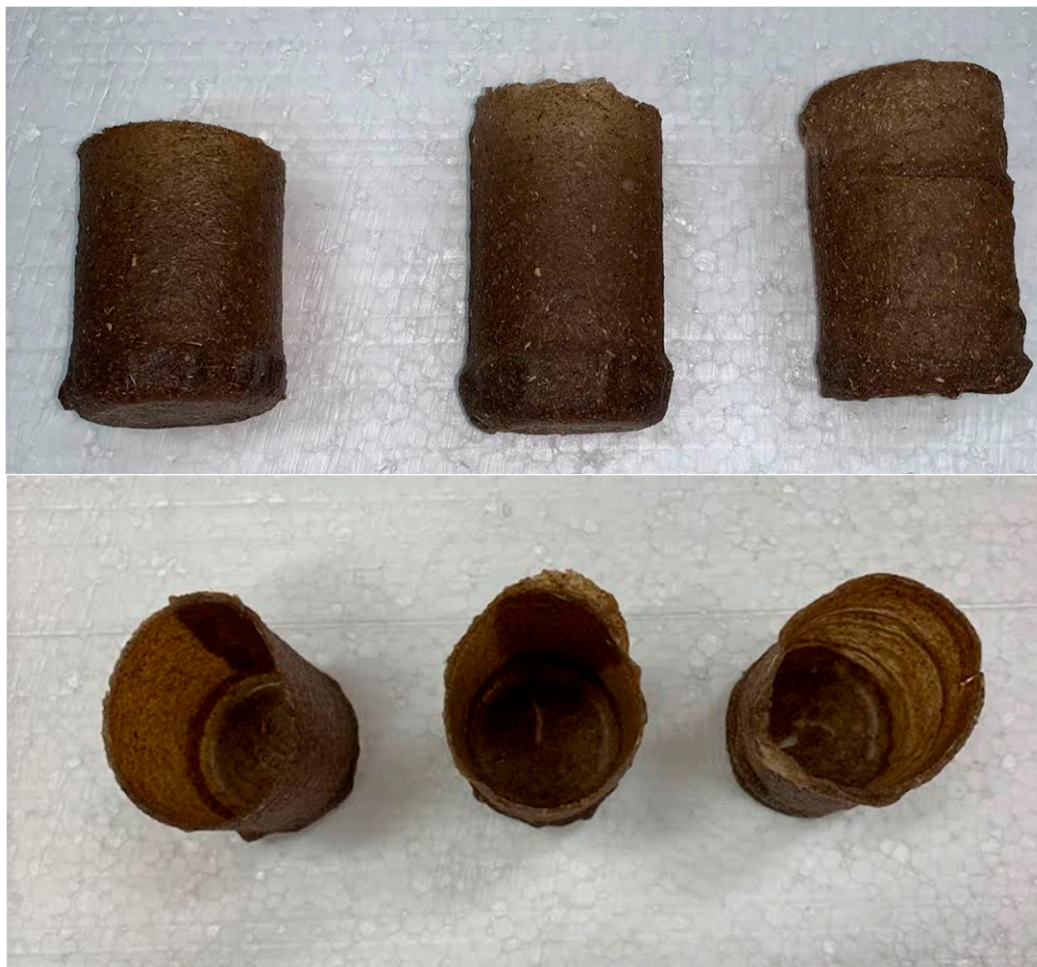
FF: Fiberless Film, SFF: Sugarcane Fiber Film.



**Figure S1.** Filmogenic solution deposited in trays after gelatinization for drying in an oven. Source: Authors, 2022.



**Figure S2.** Absorption spectra FTIR- of synthesized biodegradable films. Control film without the addition of fiber, Film with the addition of sugarcane fiber in the structure.  
Source: Author, 2022.



**Figure S3.** Packaging for Plant Seedlings with Sugarcane Fiber Film.



**Figure S4.** Biodegradability test of soil films. Source: Author, 2022.