

Figure S1. Monthly mean values of PM_{10} and $PM_{2.5}$ [μgm^{-3}] August 2017: (a) and (c) BgCWFS_mod; (b) and (d) BgCWFS_sat.

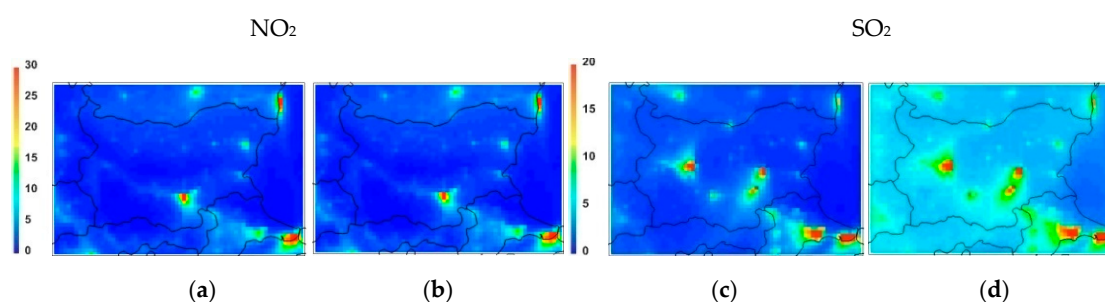


Figure S2. Monthly mean values of NO_2 and SO_2 [μgm^{-3}], August 2017: (a) and (c) BgCWFS_mod; (b) and (d) BgCWFS_sat.

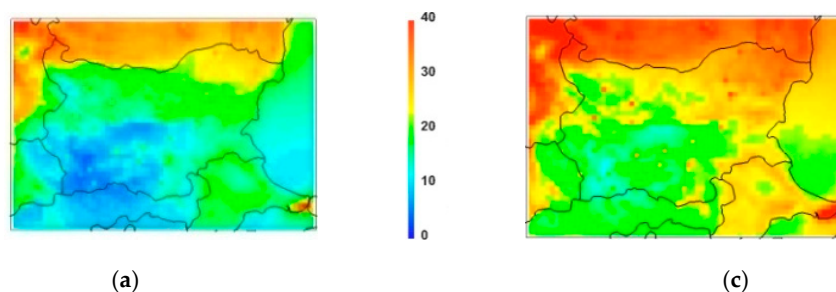


Figure S3. Monthly mean values of $PM_{2.5}$ [μgm^{-3}], February 2019: (a) BgCWFS_mod; (b) BgCWFS_sat.

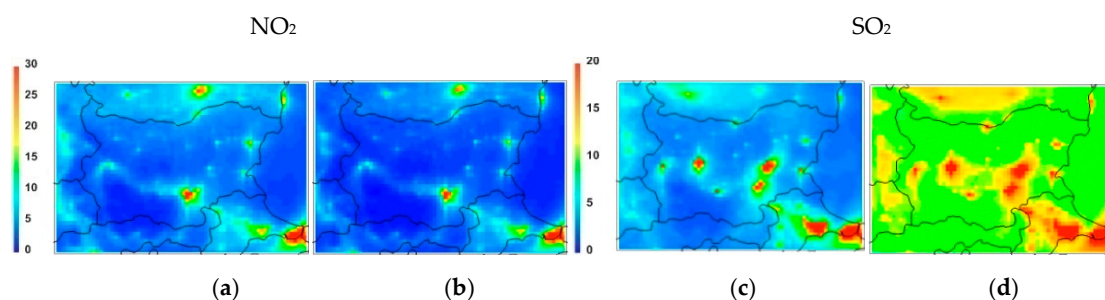


Figure S4. Monthly mean values of NO_2 and SO_2 [μgm^{-3}], February 2019: (a) and (c) BgCWFS_mod; (b) and (d) BgCWFS_sat.

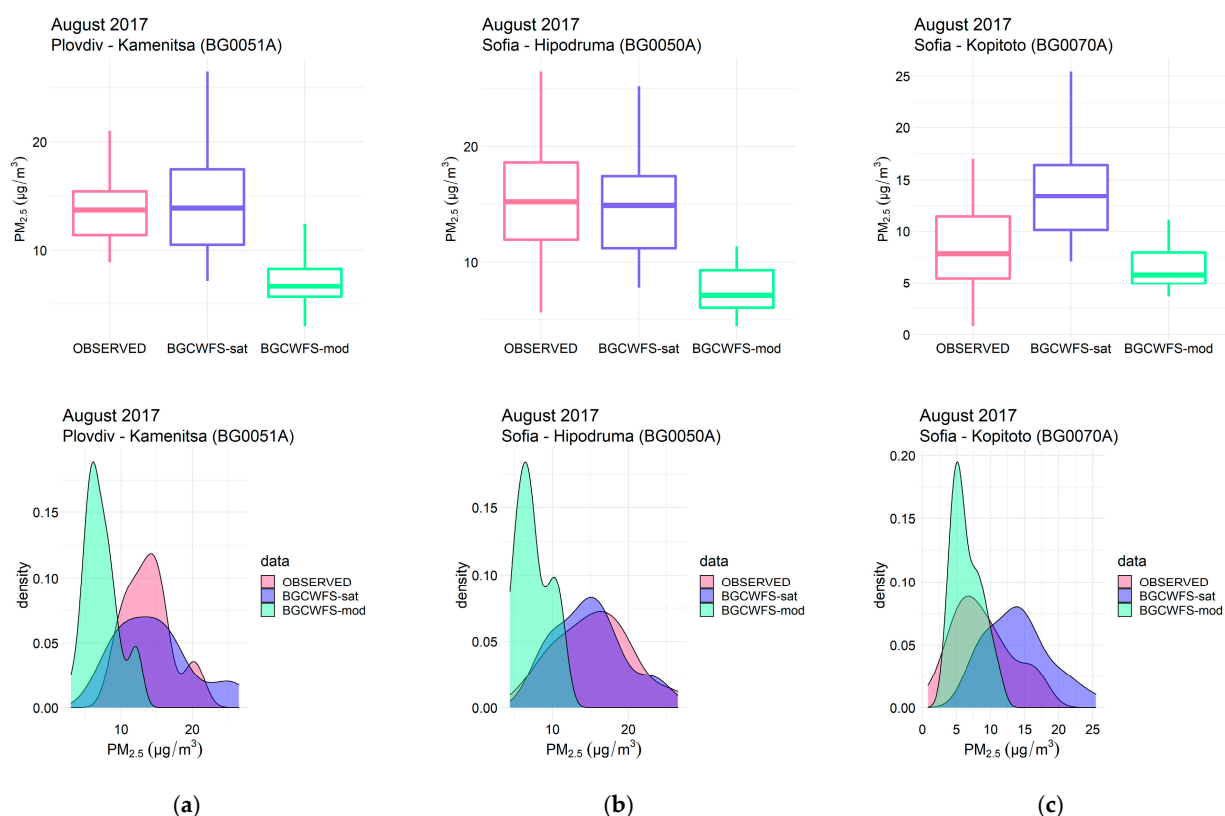


Figure S5. PM_{2.5} in August 2017 - observed, BgCWFS_sat and BgCWFS_mod at 3 selected stations: (a) Plovdiv-Kamenitza (BG0051A); (b) Sofia-Hipodruma (BG0050A); and (c) Sofia-Kopitoto (BG0070A); top panels - boxplots show minimum, maximum, 25th, 50th and 75th percentiles, bottom panels – kernel density estimations of the density distribution functions

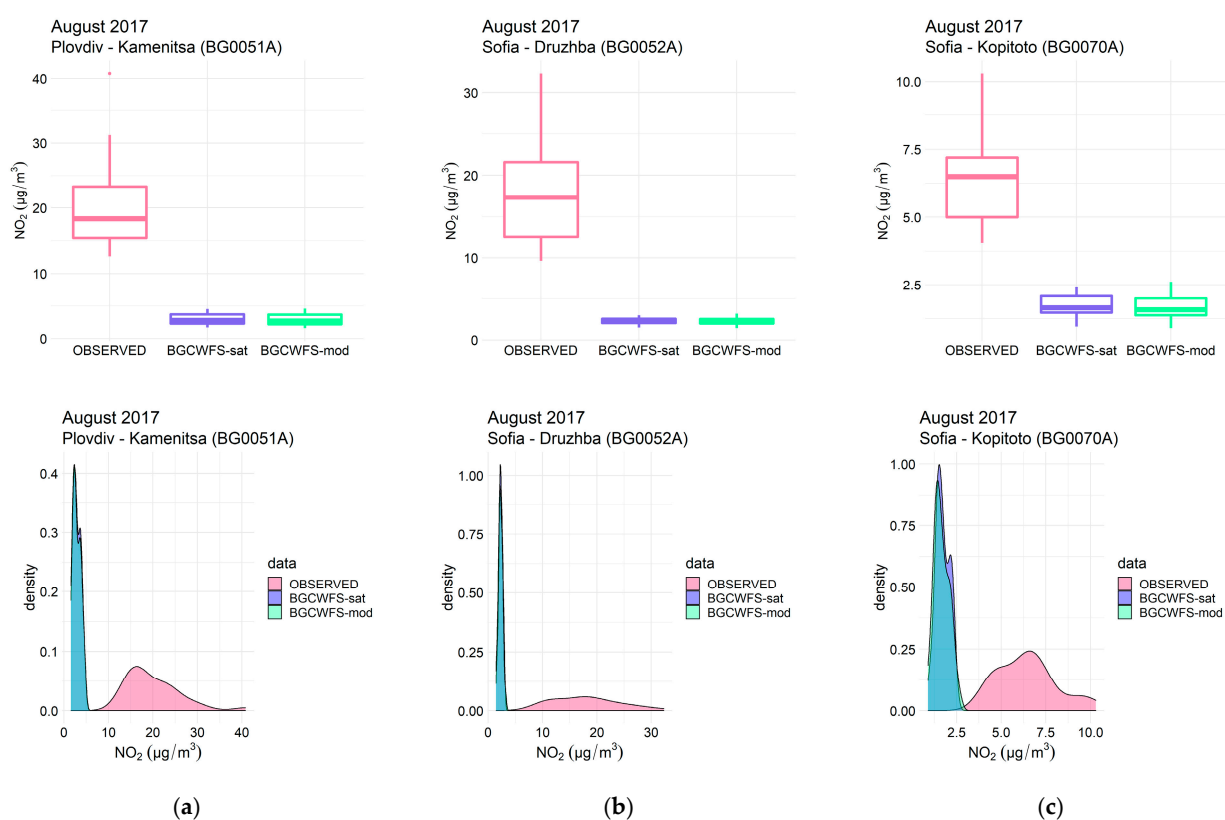


Figure S6. NO₂ in August 2017 - observed, BgCWFS_sat and BgCWFS_mod at 3 selected stations: (a) Plovdiv-Kamenitza (BG0051A); (b) Sofia-Druzhba (BG0052A); and (c) Sofia-Kopitoto (BG0070A); top panels - boxplots show minimum, maximum, 25th, 50th and 75th percentiles, bottom panels – kernel density estimations of the density distribution functions

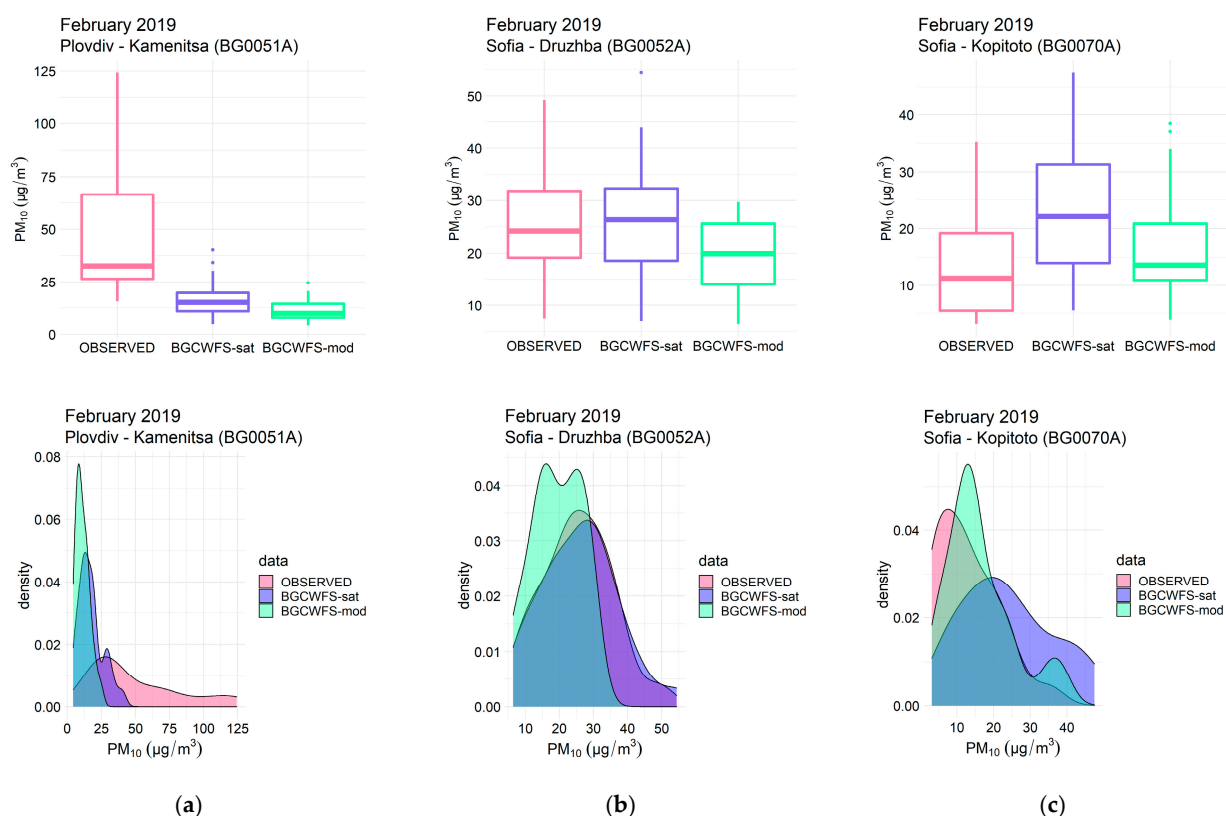
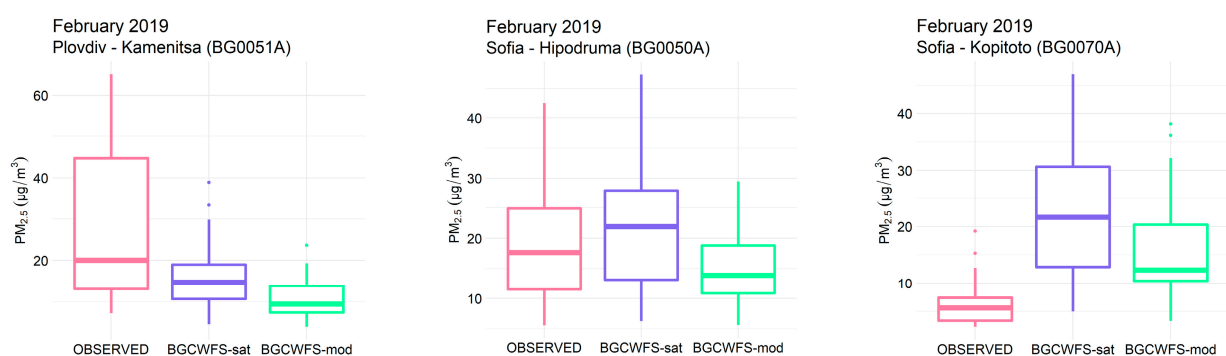


Figure S7. PM₁₀ in February 2019 - observed, BgCWFS_sat and BgCWFS_mod at 3 selected stations: (a) Plovdiv-Kamenitza (BG0051A); (b) Sofia Druzhba (BG0052A); and (c) Sofia-Kopitoto (BG0070A); top panels - boxplots show minimum, maximum, 25th, 50th and 75th percentiles, bottom panels – kernel density estimations of the density distribution functions



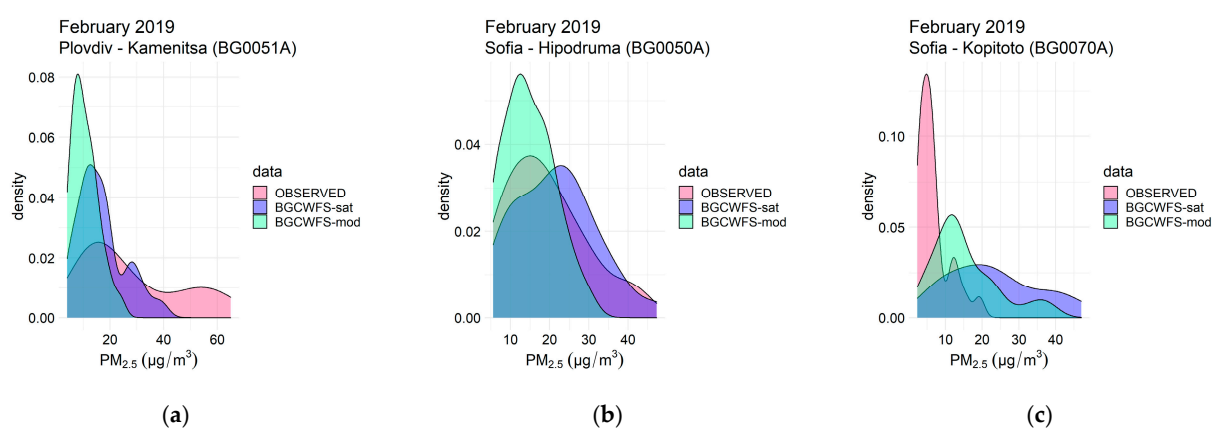


Figure S8. $PM_{2.5}$ in February 2019 - observed, BgCWFS_sat and BgCWFS_mod at 3 selected stations: (a) Plovdiv-Kamenitza (BG0051A); (b) Sofia-Hipodruma (BG0050A); and (c) Sofia-Kopitoto (BG0070A); top panels - boxplots show minimum, maximum, 25th, 50th and 75th percentiles, bottom panels – kernel density estimations of the density distribution functions

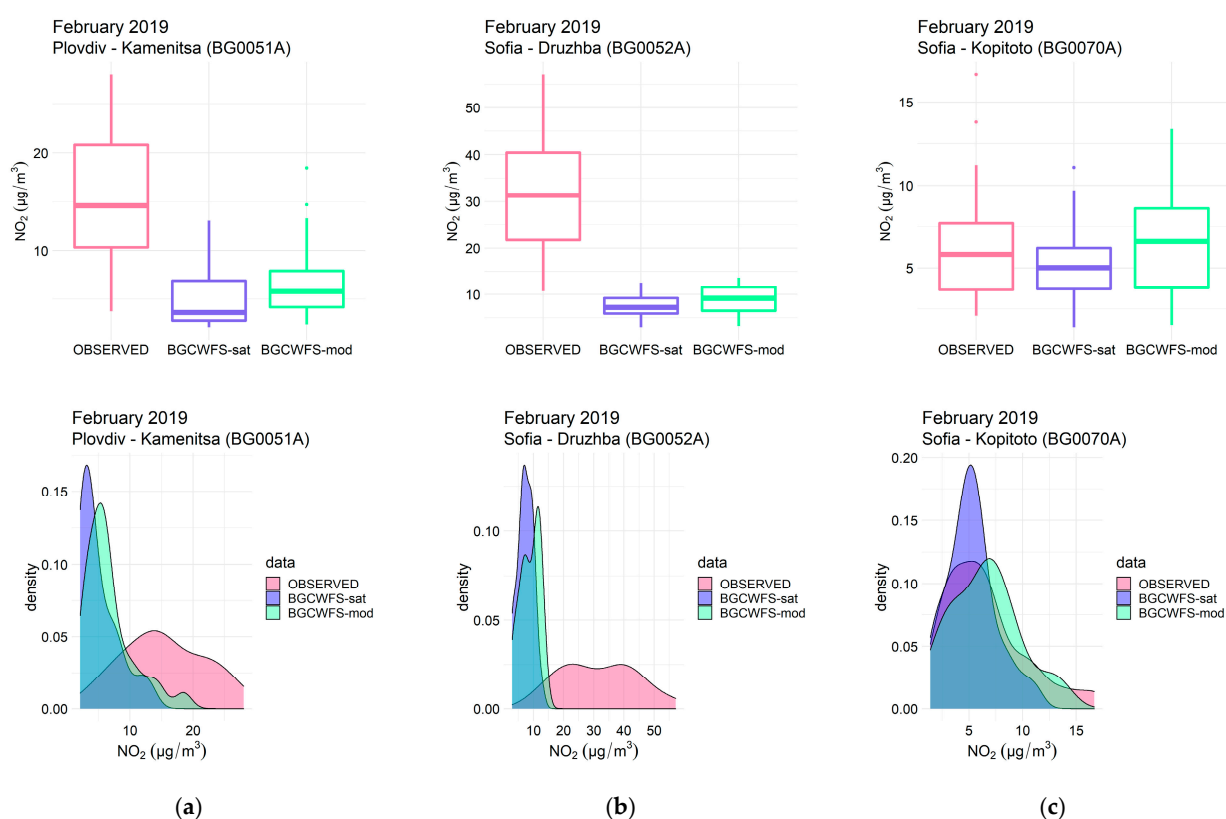


Figure S9. NO_2 in February 2019 - observed, BgCWFS_sat and BgCWFS_mod at 3 selected stations: (a) Plovdiv-Kamenitza (BG0051A); (b) Sofia-Druzhba (BG0052A); and (c) Sofia-Kopitoto (BG0070A); top panels - boxplots show minimum, maximum, 25th, 50th and 75th percentiles, bottom panels – kernel density estimations of the density distribution functions

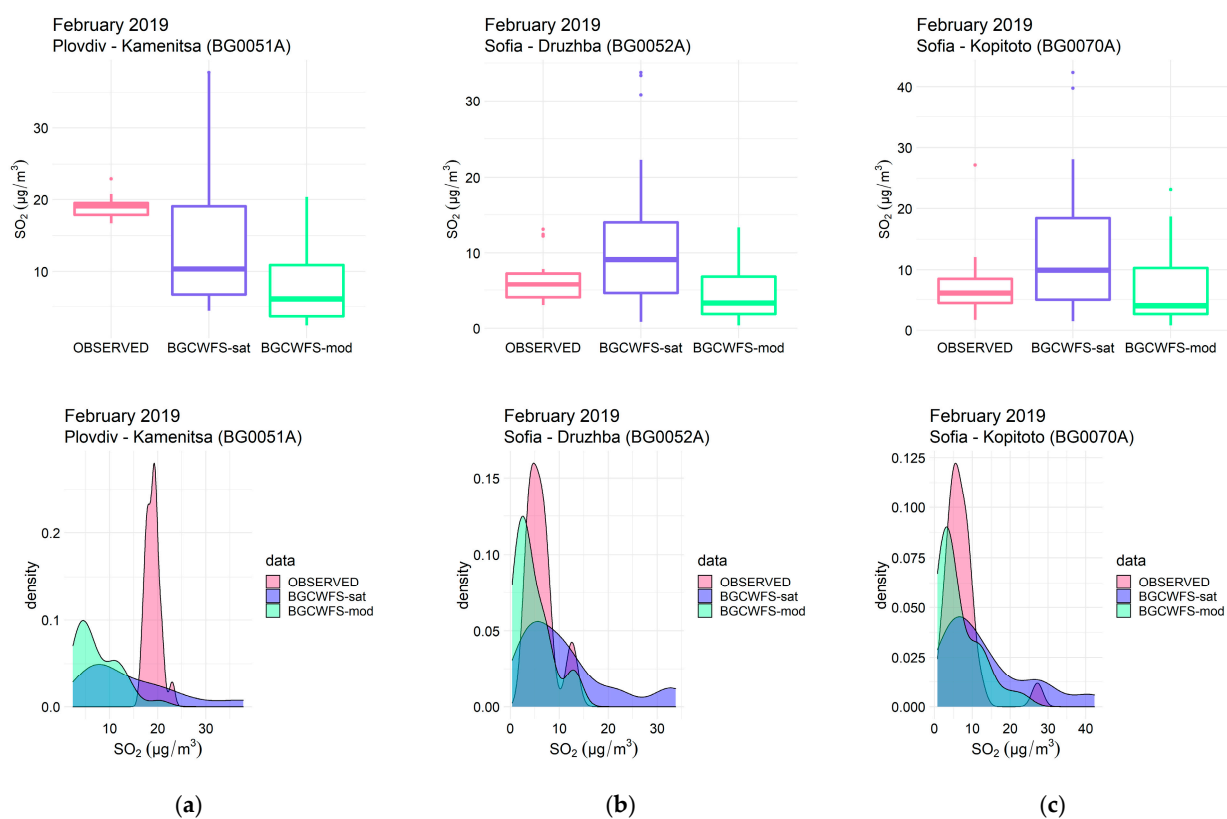


Figure S10. SO₂ in February 2019 - observed, BgCWFS_sat and BgCWFS_mod at 3 selected stations: **(a)** Plovdiv-Kamenitza (BG0051A); **(b)** Sofia-Druzhba (BG0052A); and **(c)** Sofia-Kopitoto (BG0070A); top panels - boxplots show minimum, maximum, 25th, 50th and 75th percentiles, bottom panels – kernel density estimations of the density distribution functions