

Supplementary Material S4: Home range polygons of Greater Spotted Eagle, Indian Spotted Eagle, Tawny Eagle, Western Marsh Harrier Male, and Pallid Harrier Female. Home ranges were calculated in their breeding and non-breeding ranges.

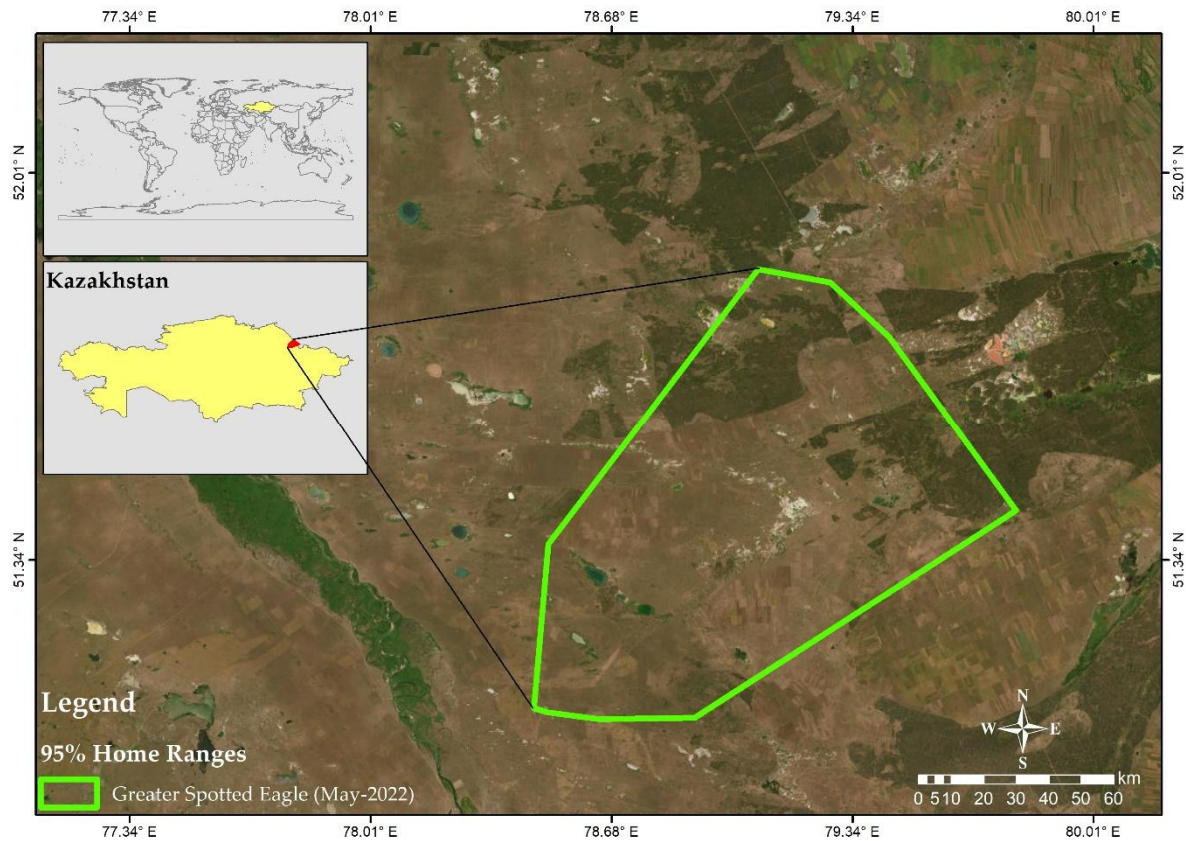


Figure S4.1 Home range of Greater Spotted Eagle calculated from May 2022 to August 2022 in Kazakhstan.

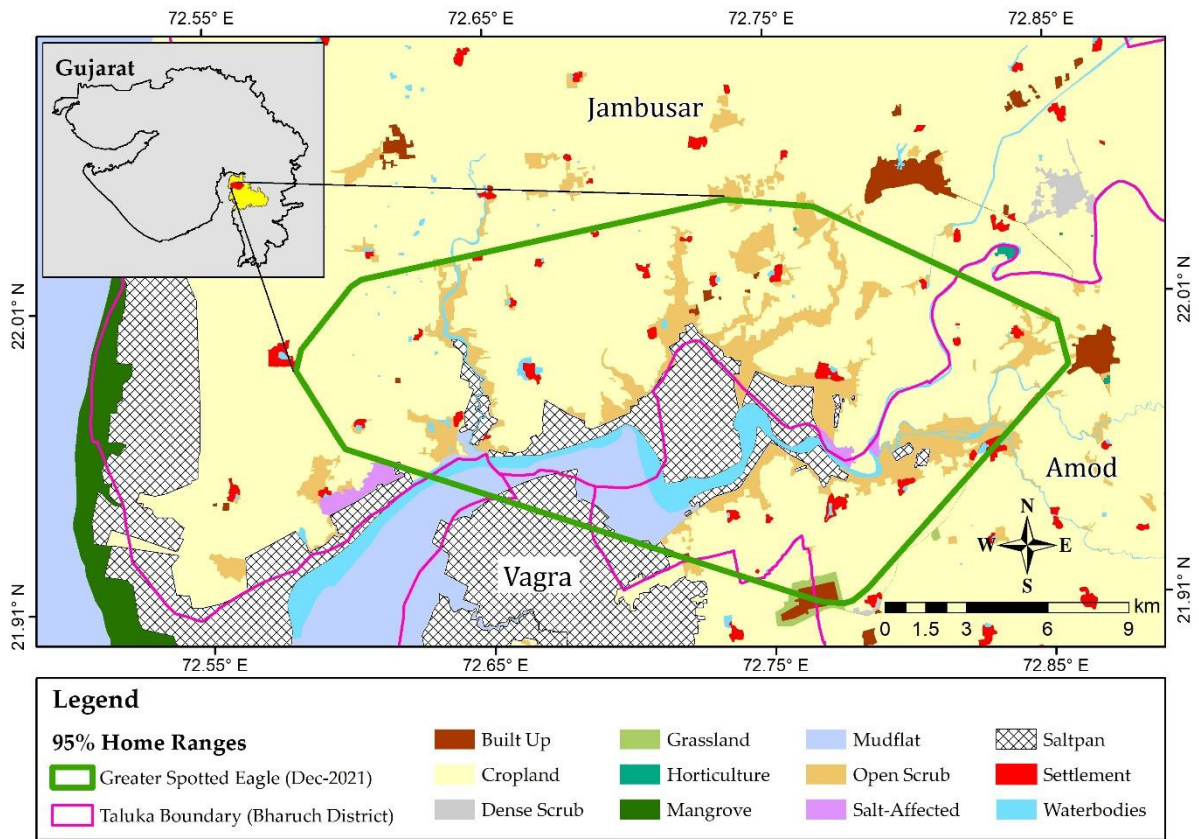


Figure S4.2 Home range of Greater Spotted Eagle calculated from December 2021 to April 2022 in Gujarat, India.

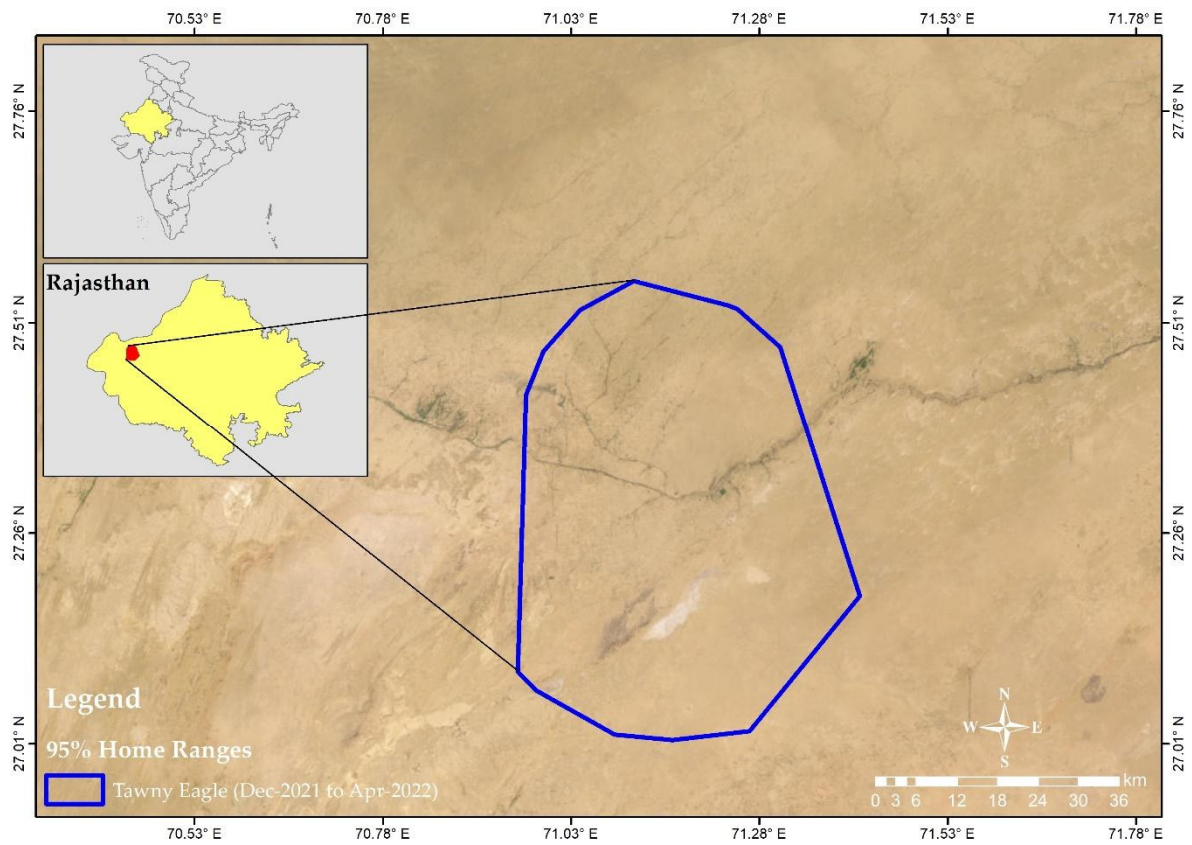


Figure S4.3 Home range of Tawny Eagle calculated from December 2021 to April 2022 in Rajasthan, India.

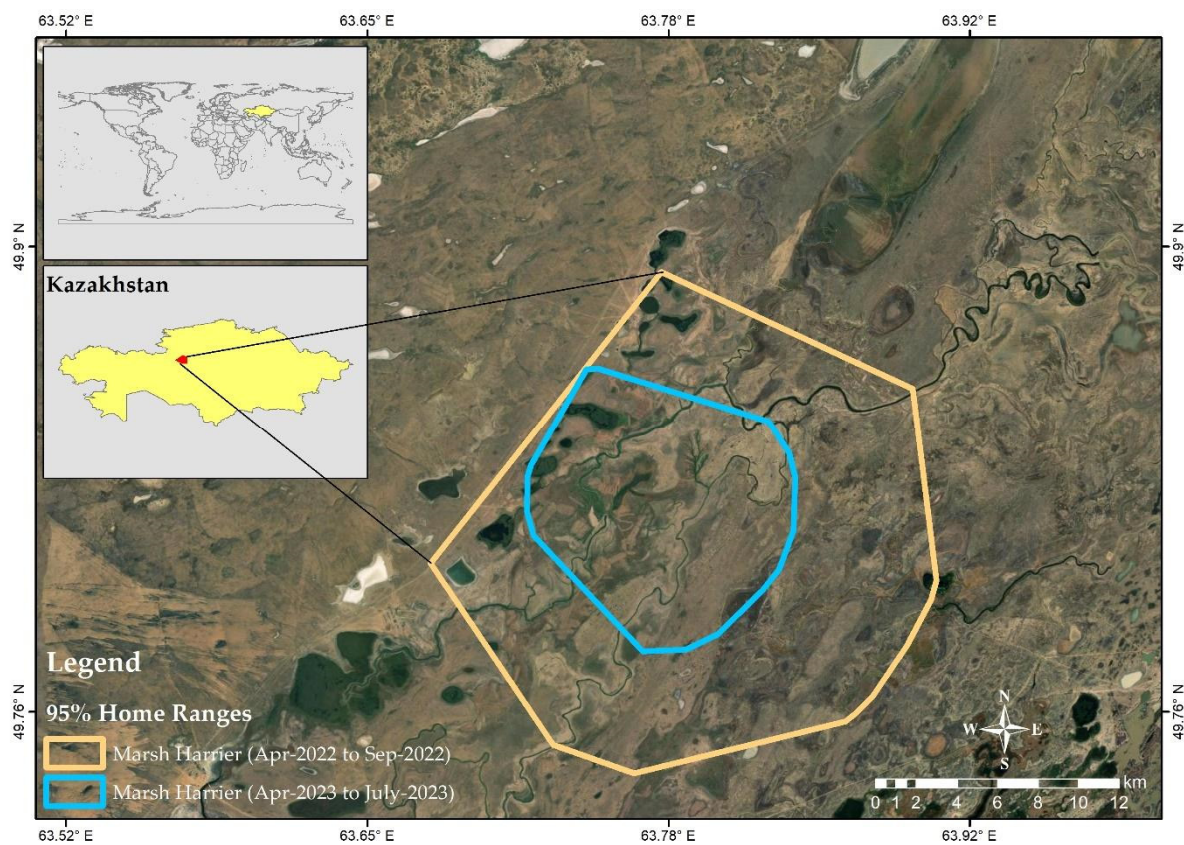


Figure S4.4 Home range of Western Marsh Harrier Male, calculated from April 2022 to September 2022 and April 2023 to July 2023 in central Kazakhstan.

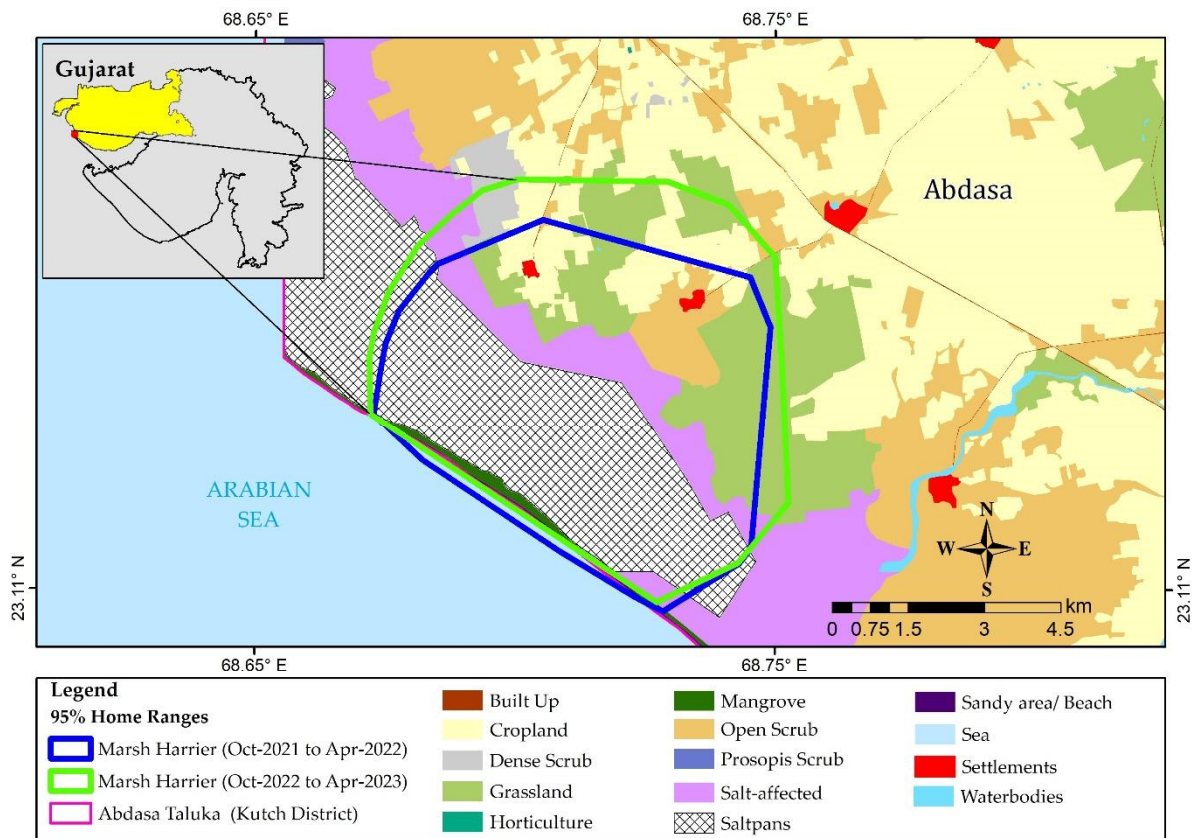


Figure S4.5 Home range of Western Marsh Harrier Male calculated from October 2021 to April 2022 and October 2022 to April 2023 in Gujarat, India.

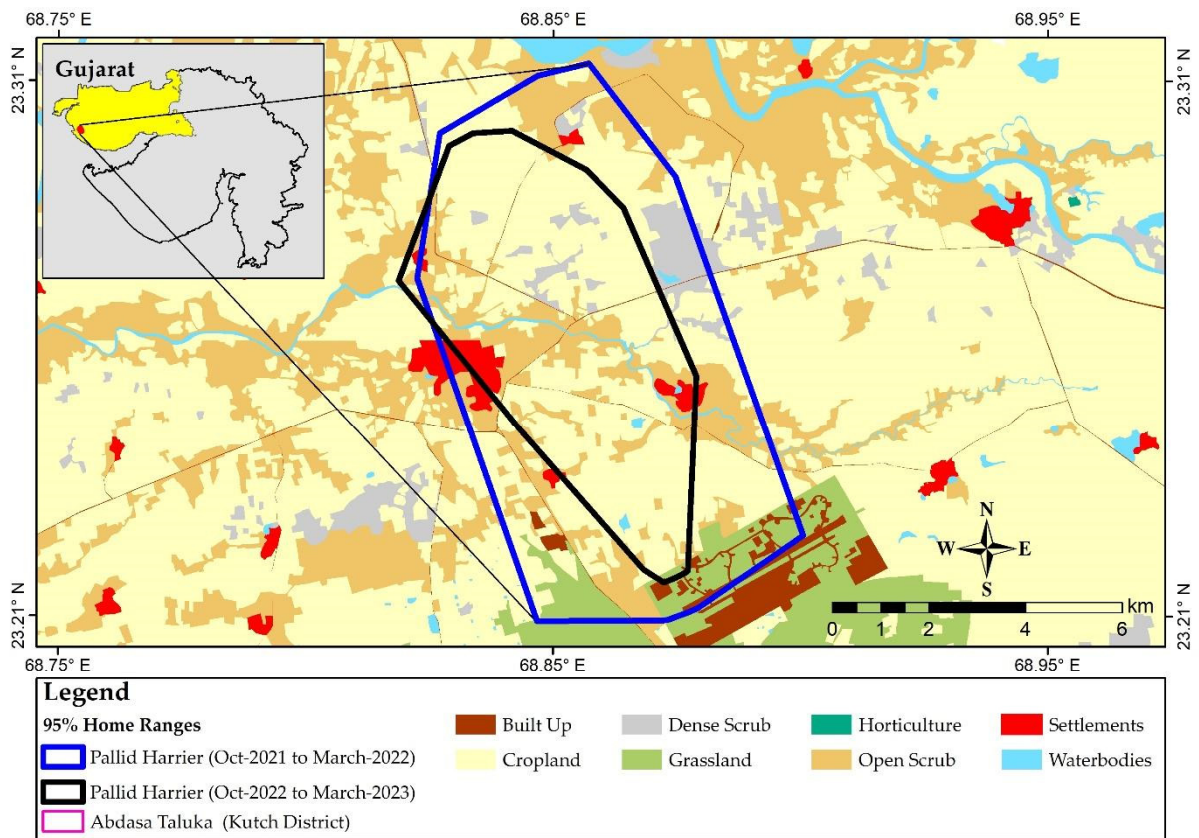


Figure S4.6 Home range of Pallid Harrier Female, calculated from October 2021 to March 2022 and October 2022 to March 2023 in Gujarat, India.

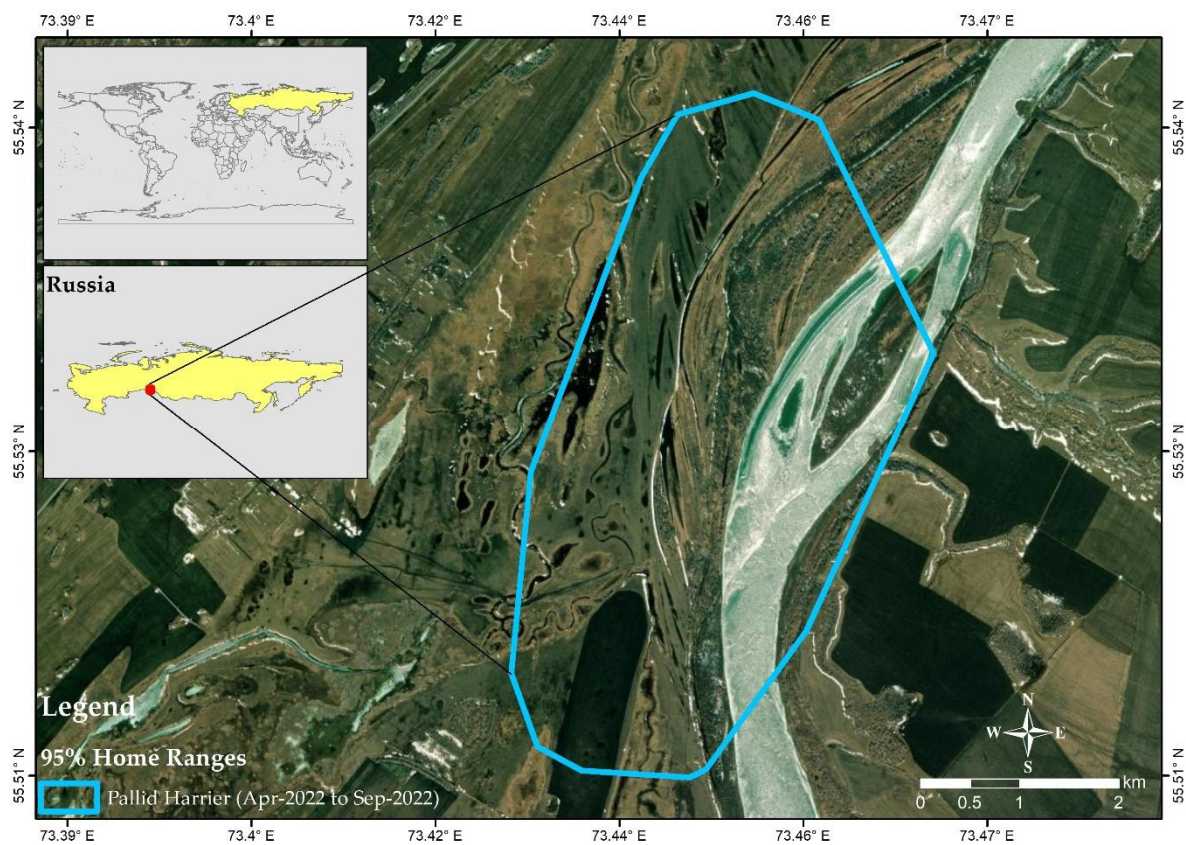


Figure S4.7 Home range of Pallid Harrier Female calculated from April 2022 to September 2022 in Russia.

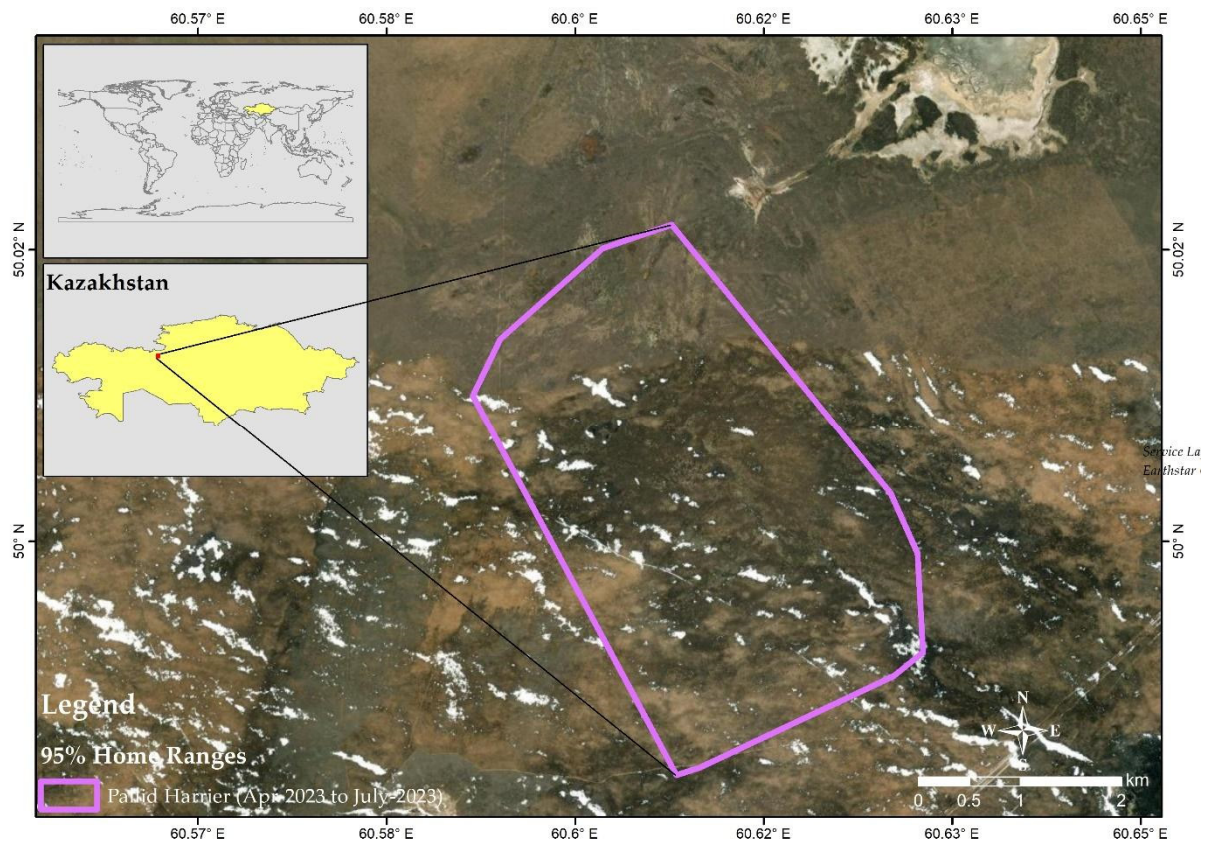


Figure S4.8 Home range of Pallid Harrier Female calculated from April 2023 to July 2023 in Kazakhstan.

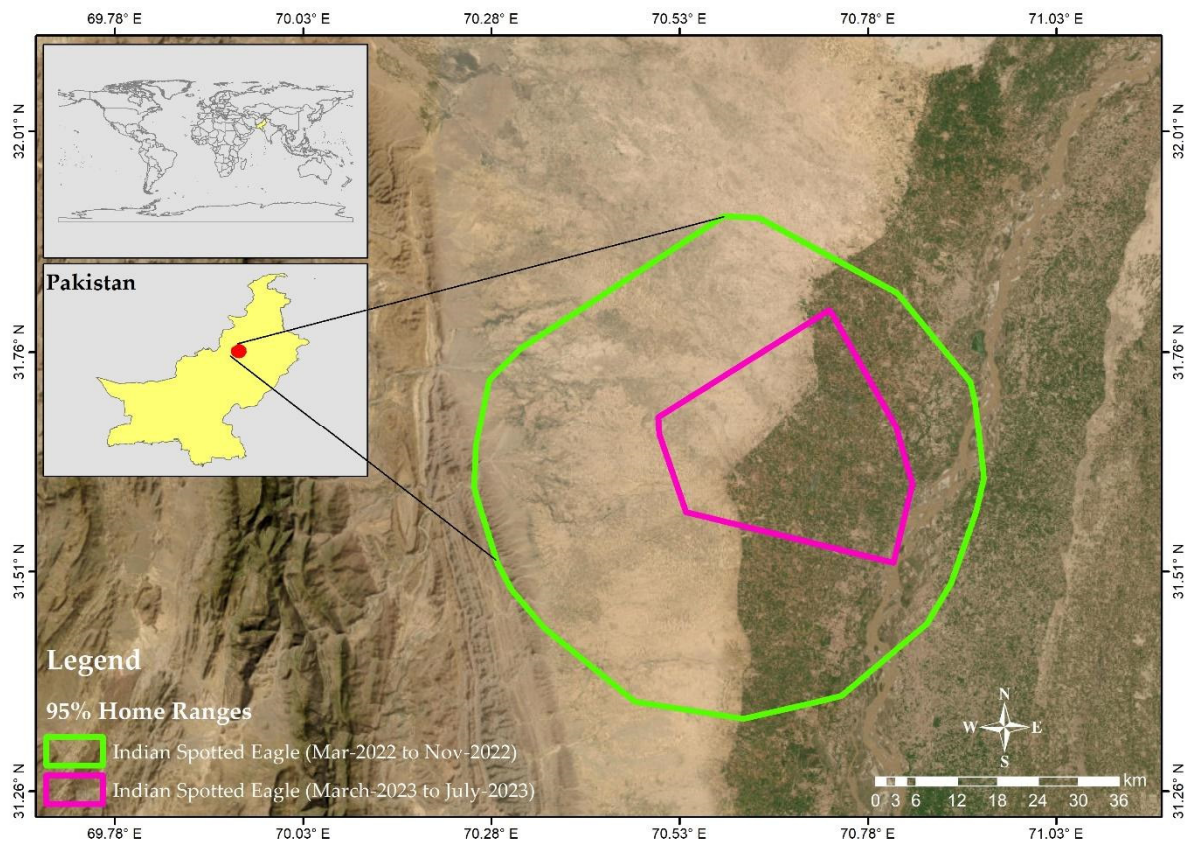


Figure S4.9 Home range of Indian Spotted Eagle, calculated from March 2022 to November 2022 and March 2023 to July 2023 in Pakistan.

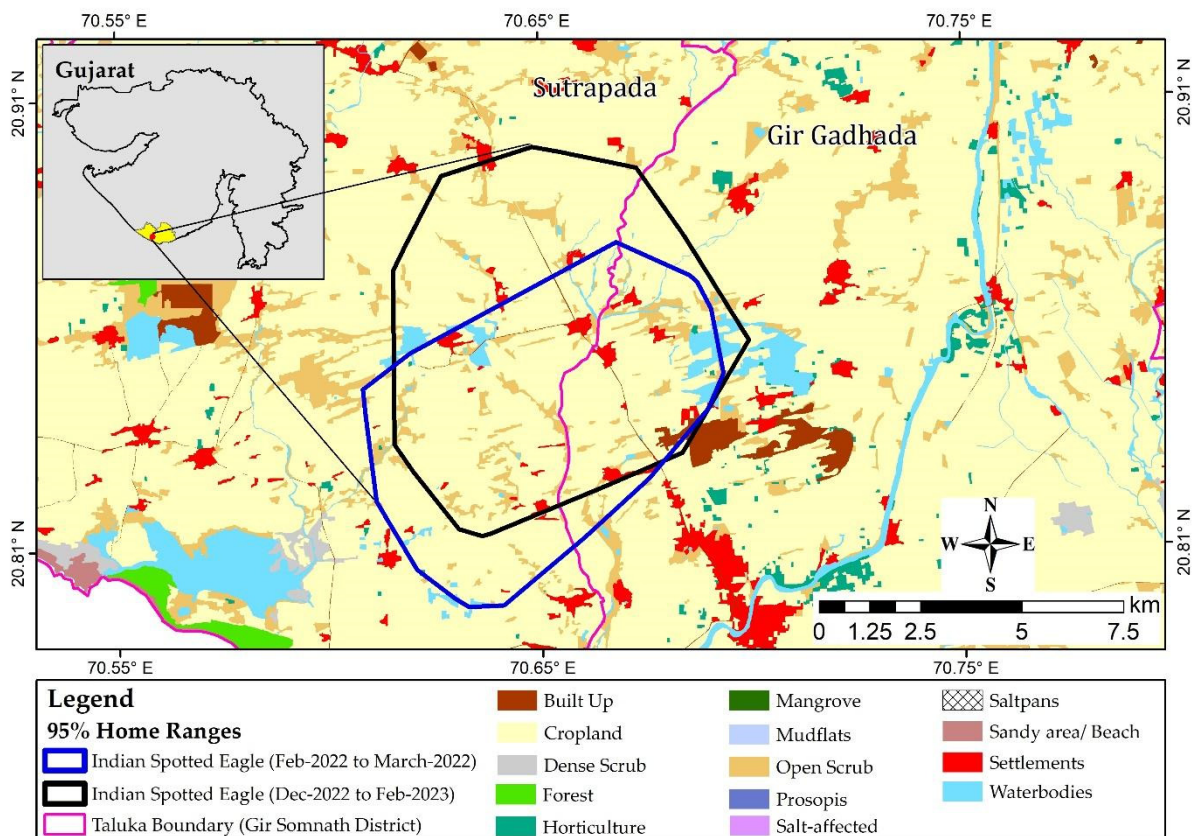


Figure S4.10 Home range of Indian Spotted Eagle, calculated from February 2022 to March 2022 and December 2022 to February 2023 in India.