

Supplementary material

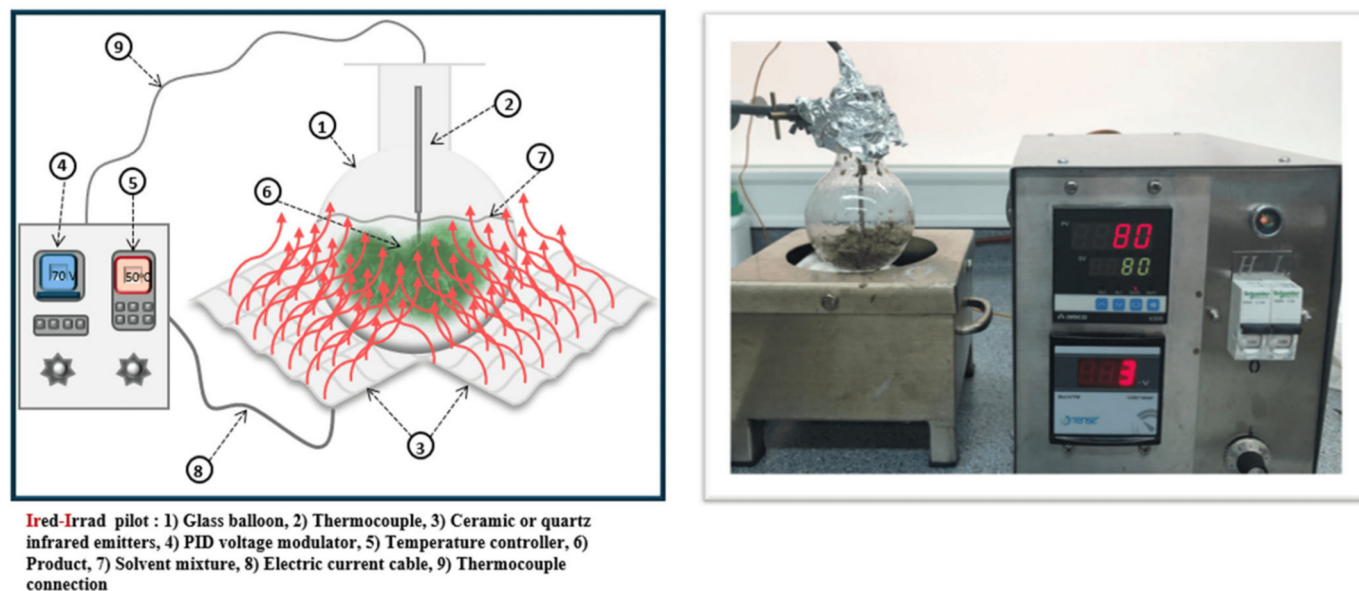


Figure S1: Infrared-assisted extraction system: schematic and experimental setup.

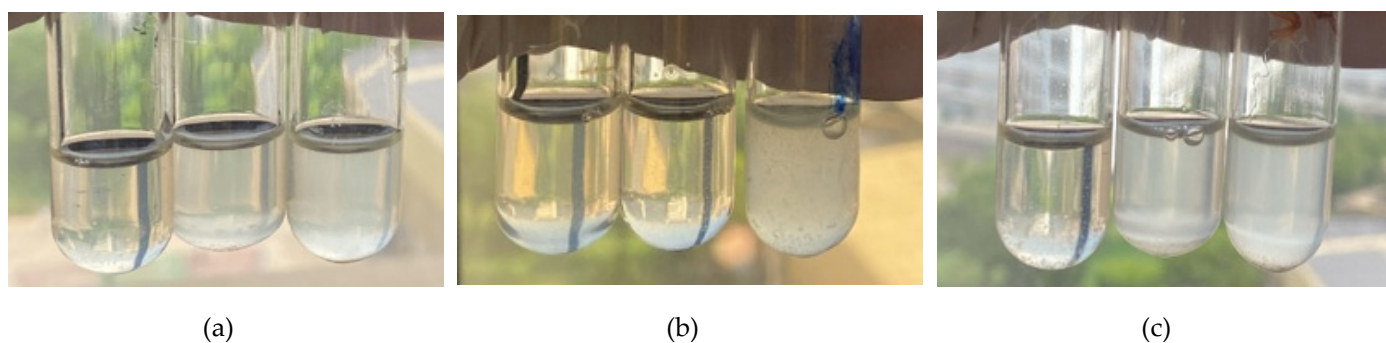


Figure S2: MIC of WB and IR kiwi peel extracts: (a) WB extract on *B. cereus*, (b) IR extract on *B. cereus*, and (c) IR extract on *S. aureus*. The tubes show the concentration series of each extract, with clear solutions indicating the MIC, or the lowest concentration where bacterial growth is visibly inhibited.

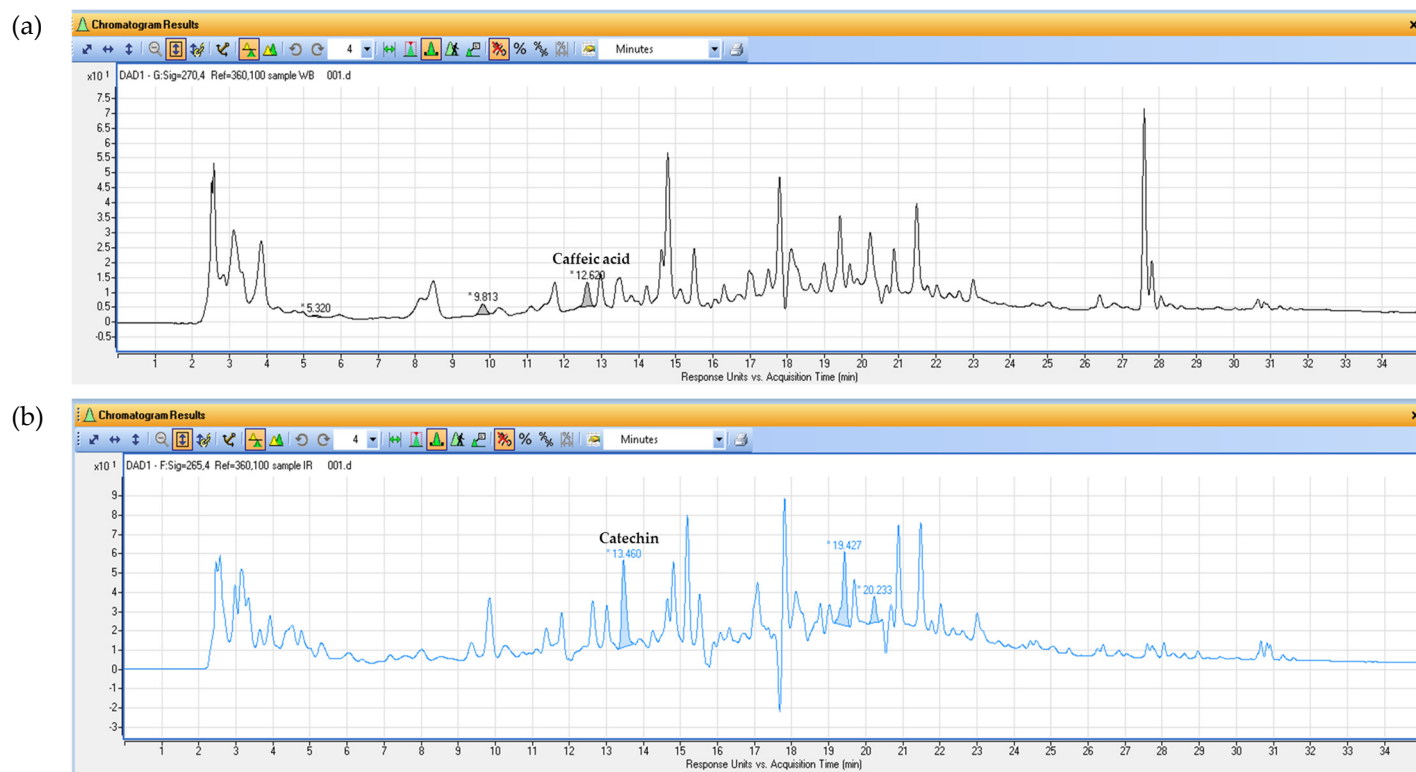


Figure S3: HPLC chromatograms of the (a) WB and (b) IR kiwi peel extracts.