

Supplementary Material

First Report of the Parasitic Nematode *Pseudoterranova* spp. Found in Mediterranean Monk Seal (*Monachus monachus*) in Greece: Conservation Implications

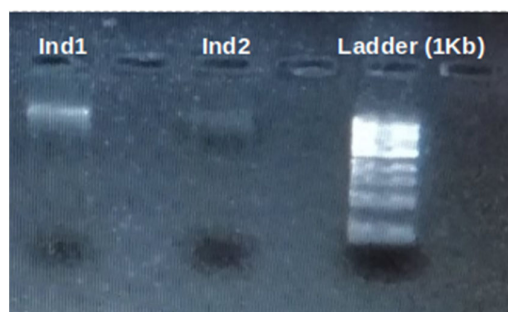


Figure S1. DNA extraction of the two individuals (Ind1 and Ind2) using the standard phenol/chloroform protocol. The Ladder is at 1Kb per lane.

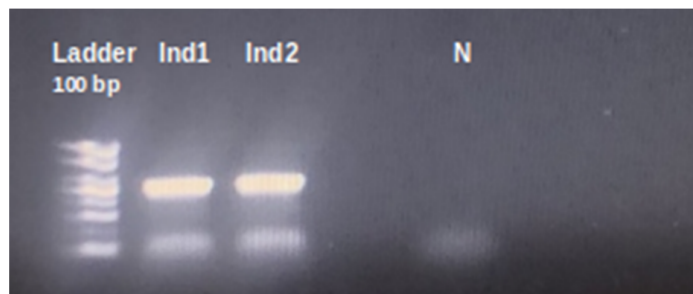


Figure S2. PCR of the 585bp amplified product of the Cytochrome oxidase subunit I gene for the two individuals (Ind1 and Ind2) including a negative control (N). The Ladder is at 100 bp per lane.