

Supplementary Information for:

**Probing the Local Polarity in Biocompatible Nanocarriers with Solvatofluorochromism of a 4-Carbazole-1,8-Naphthalimide Dye**

**Ana M. Diniz <sup>1,2</sup>, Rui P. R. Cruz <sup>1</sup>, and João Avó <sup>1,2,\*</sup>**

<sup>1</sup> IBB—Institute for Bioengineering and Biosciences and Department of Bioengineering, Instituto Superior Técnico, Universidade de Lisboa, Av. Rovisco Pais, 1049-001 Lisboa, Portugal

<sup>2</sup> Associate Laboratory i4HB—Institute for Health and Bioeconomy at Instituto Superior Técnico, Universidade de Lisboa, Av. Rovisco Pais, 1049-001 Lisboa, Portugal

\* Correspondence: joao.avo@tecnico.ulisboa.pt

NMR and mass spectra for compounds **1-3**

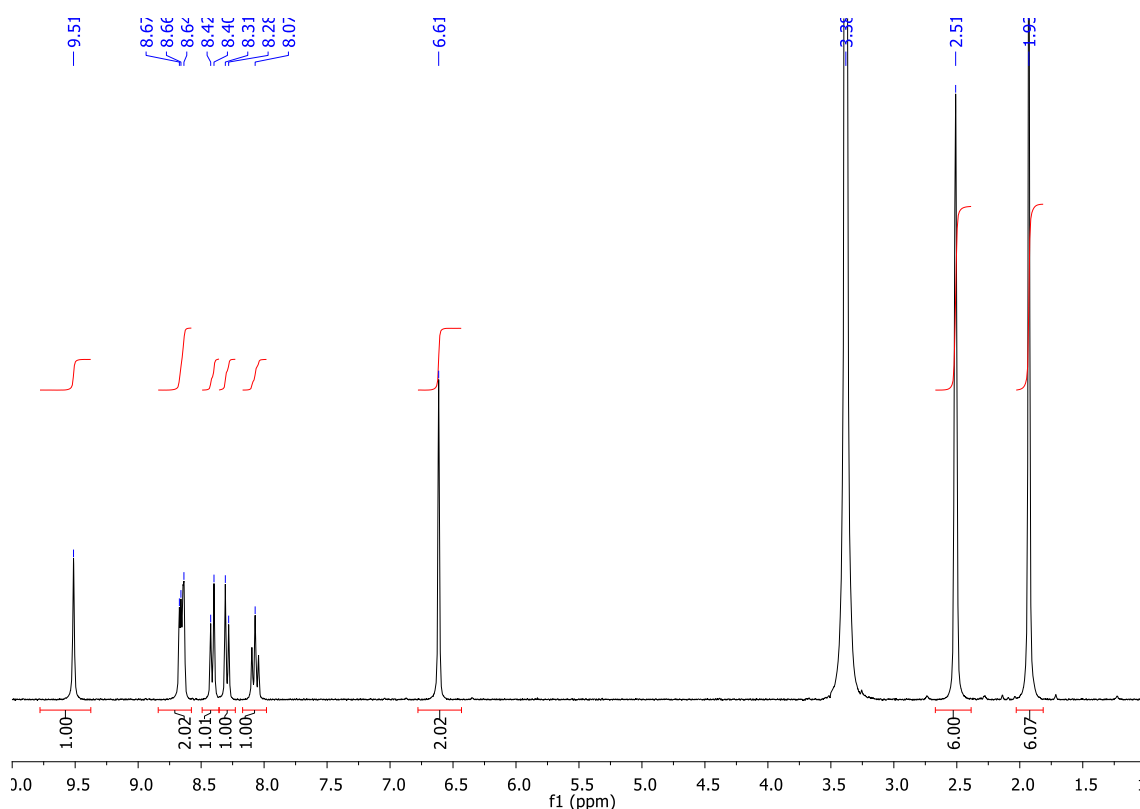


Figure S1 - <sup>1</sup>H NMR spectra for **1** in DMSO-d<sub>6</sub>.

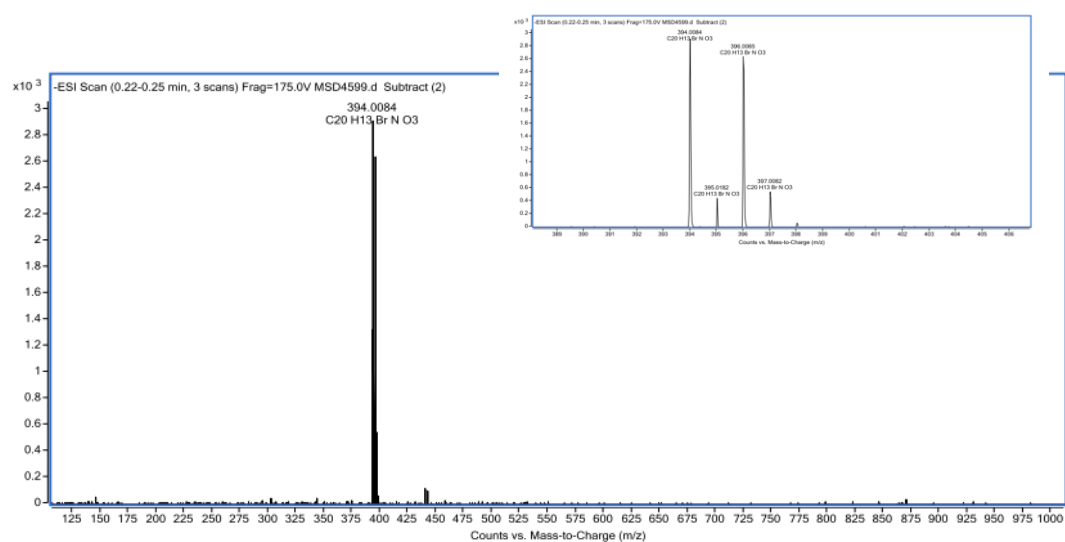


Figure S2 – Mass Spectra for **1**. Inset shows [M-H]<sup>-</sup> isotope pattern.

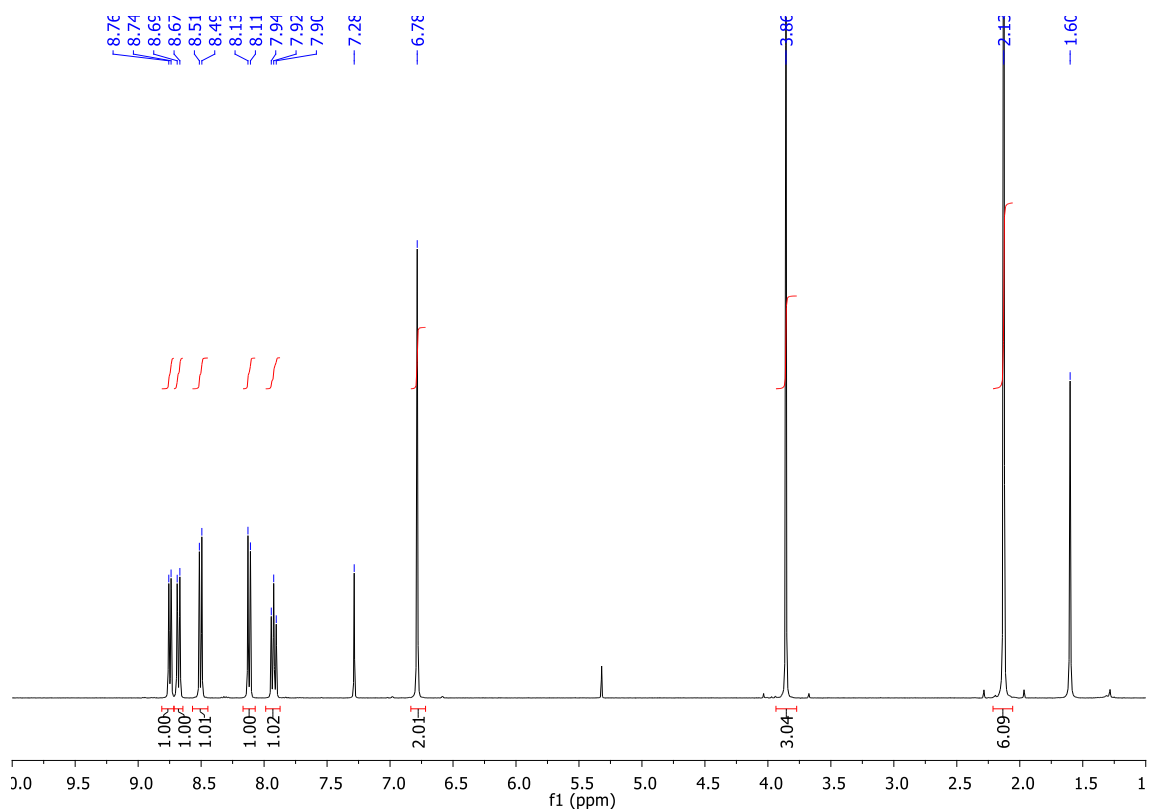


Figure S3 - <sup>1</sup>H NMR spectra for **2** in CDCl<sub>3</sub>

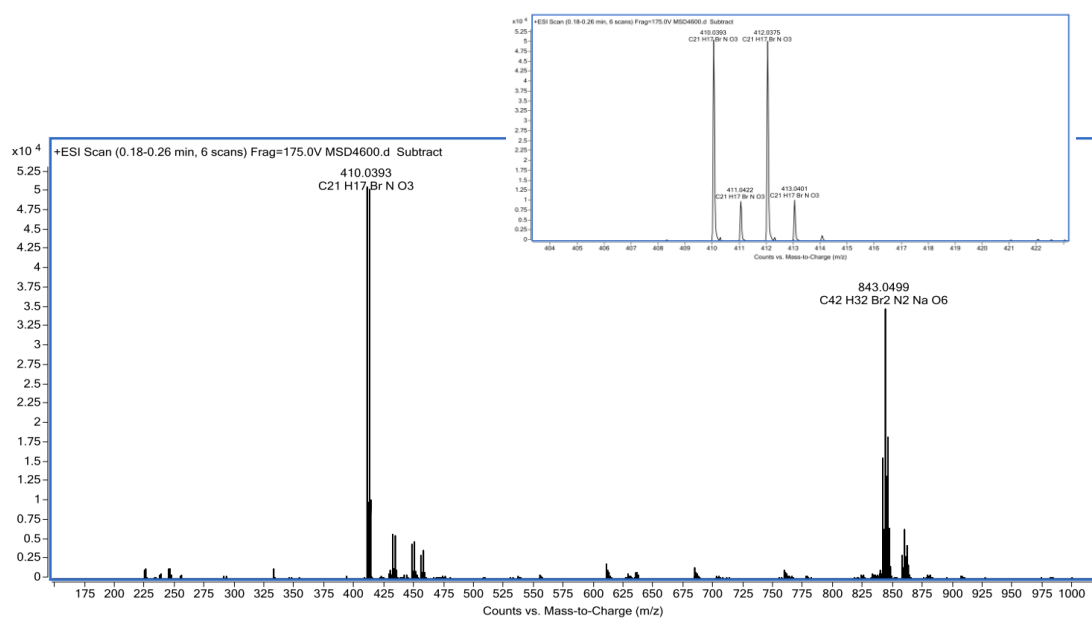


Figure S4 - Mass Spectra for **2**. Inset shows [M+H]<sup>+</sup> isotope pattern

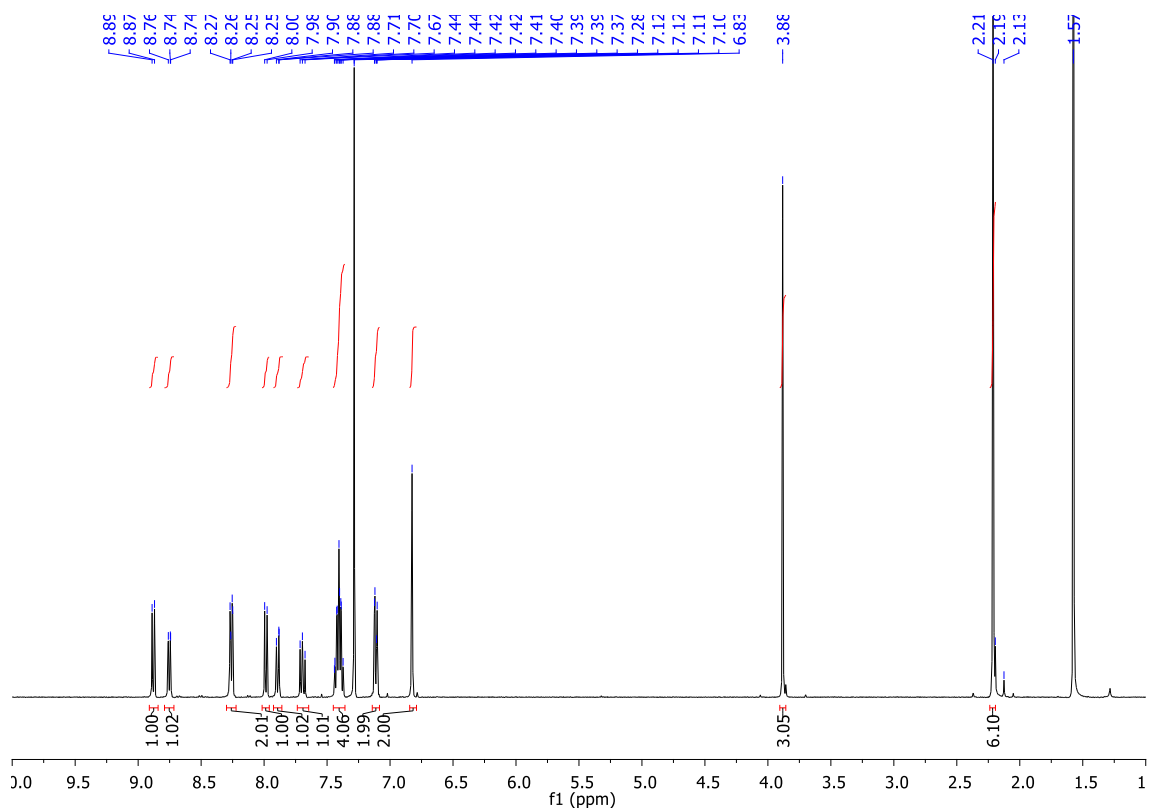


Figure S5 - <sup>1</sup>H NMR spectra for **3** in CDCl<sub>3</sub>

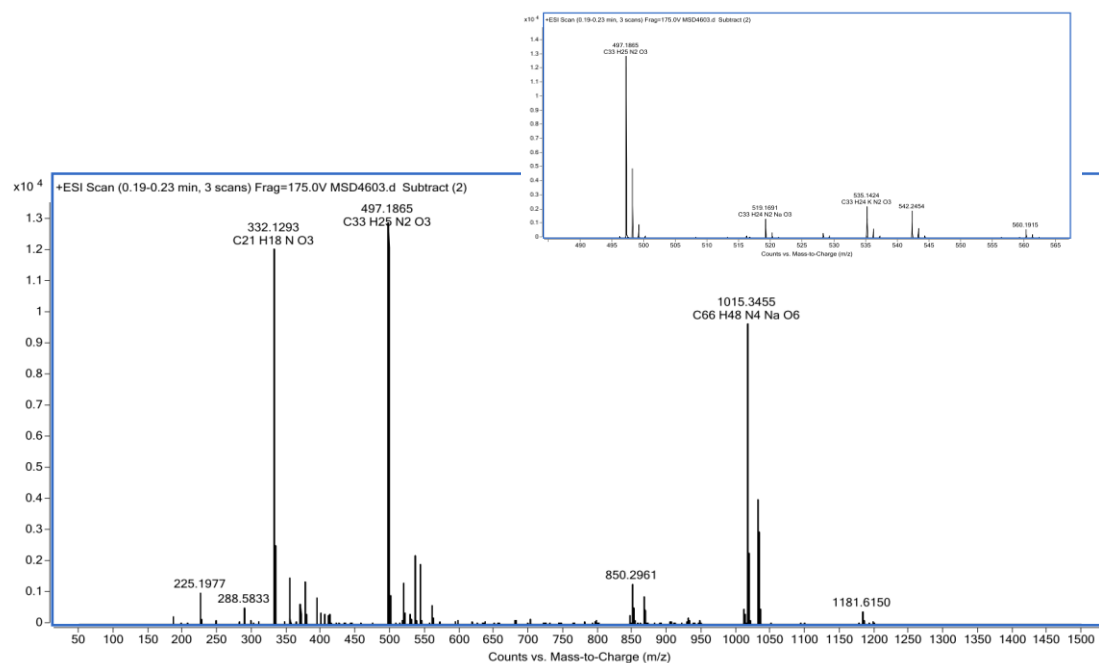


Figure S6 - Mass Spectra for 3. Inset shows [M+H]<sup>+</sup>, [M+Na]<sup>+</sup> and [M+K]<sup>+</sup> isotope pattern