

Figure S1. a-f): The dynamic simulation for HEV vaccine construct-TLR2 docked complex.

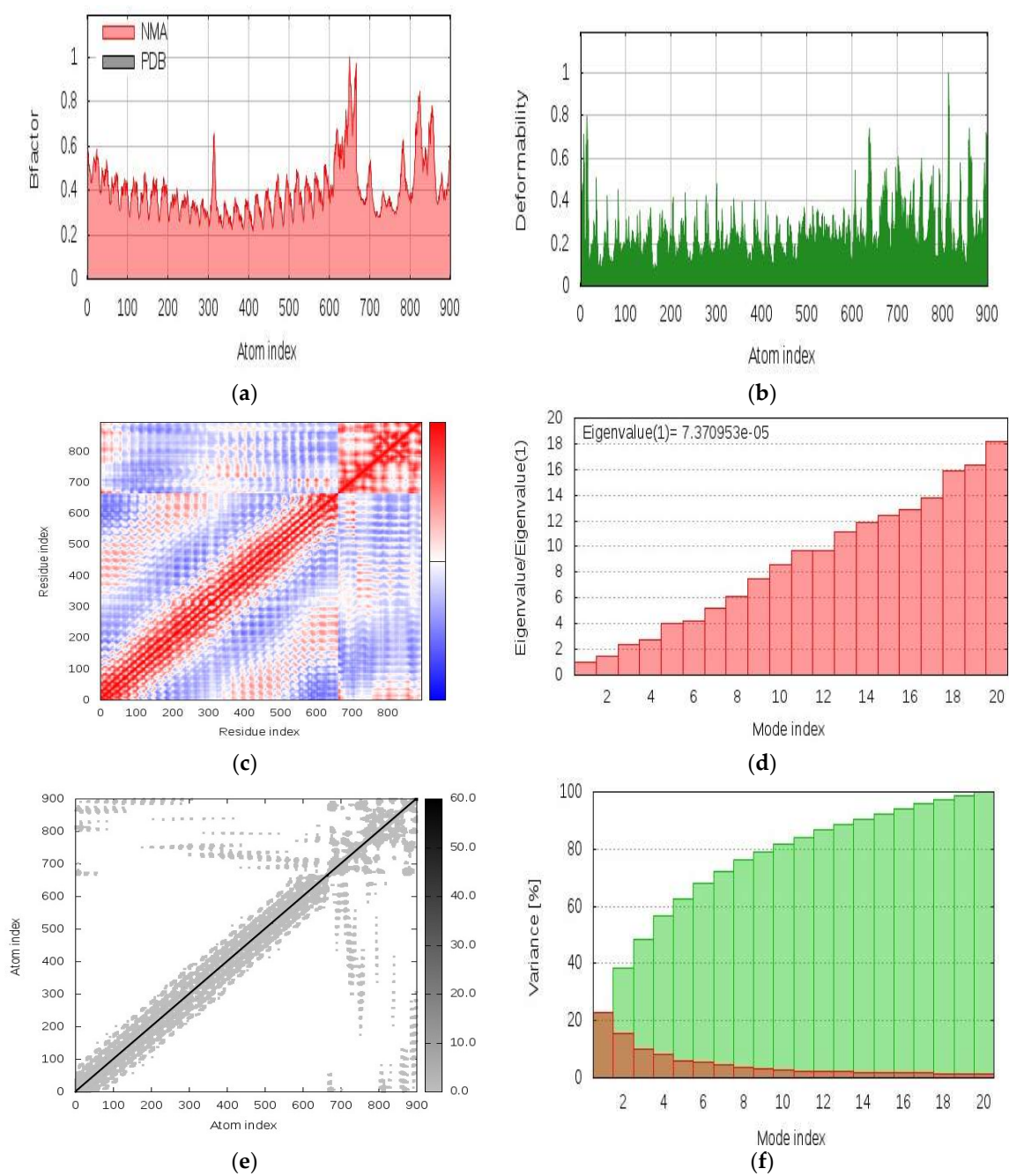


Figure S2. a-f): The dynamic simulation for HEV vaccine construct-TLR3 docked complex.

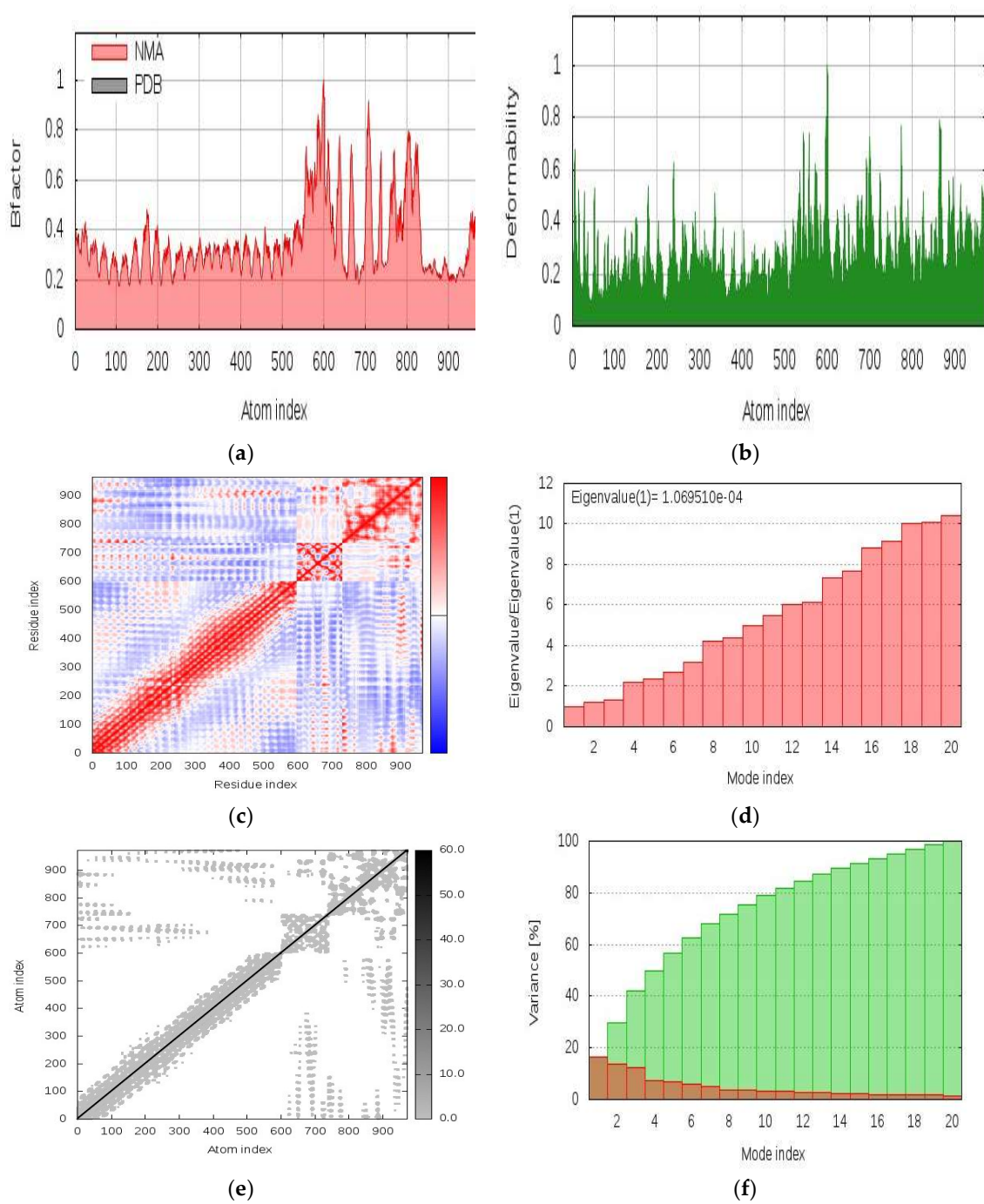


Figure S3. a-f): The dynamic simulation for HEV vaccine construct-TLR4 docked complex.

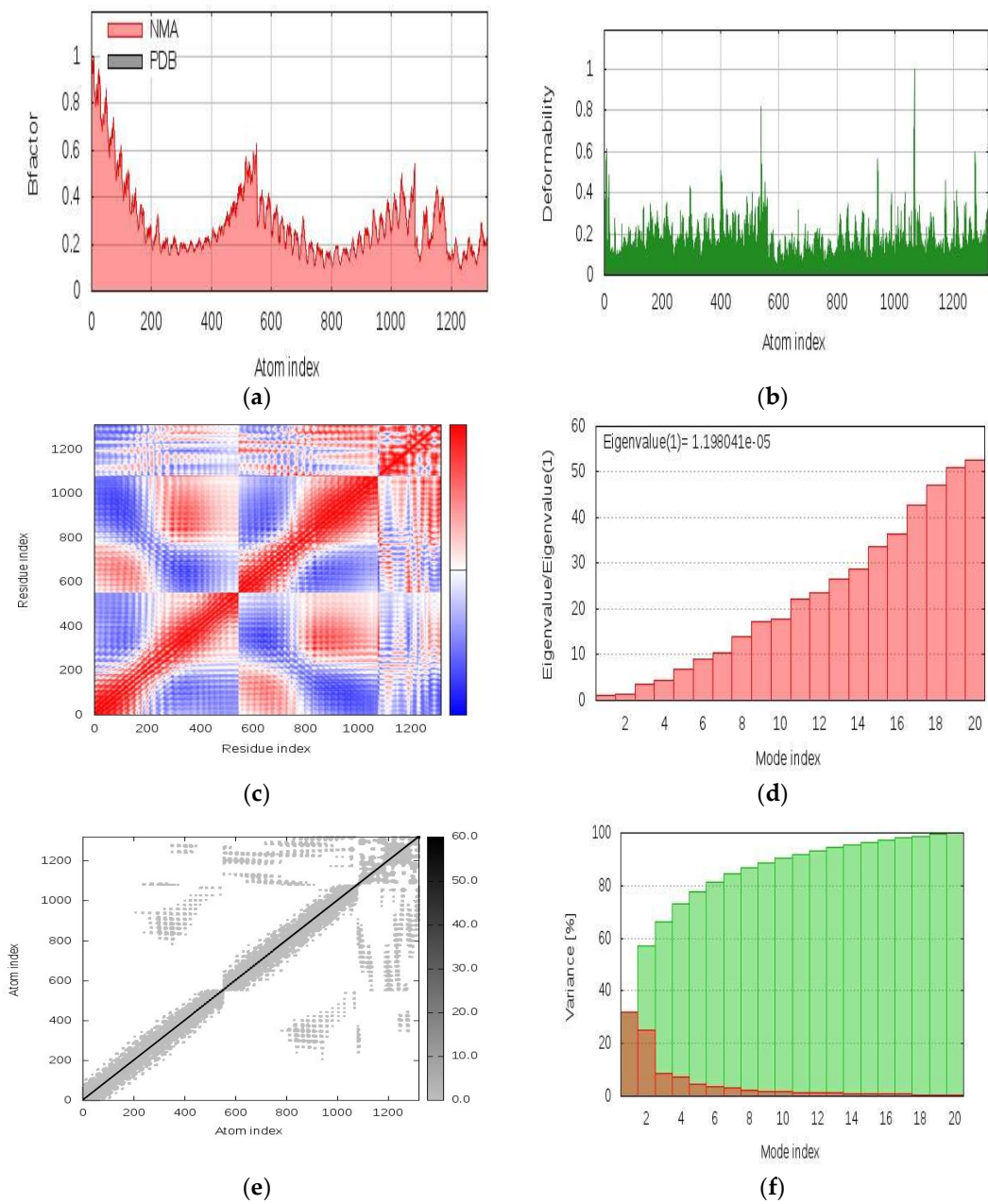
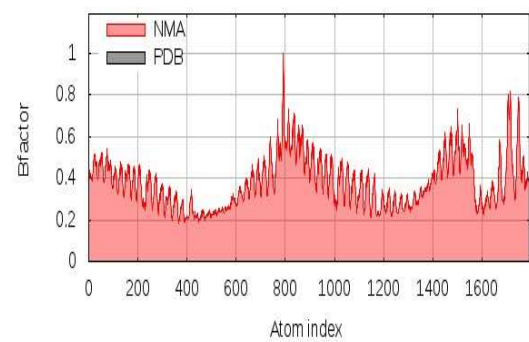
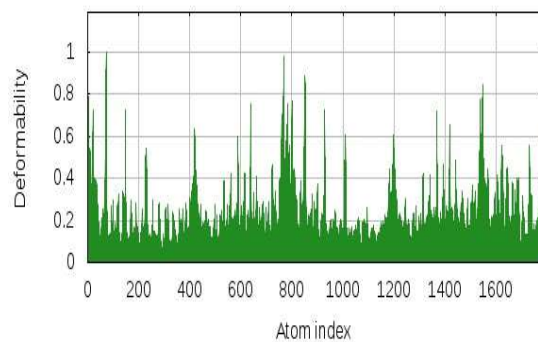


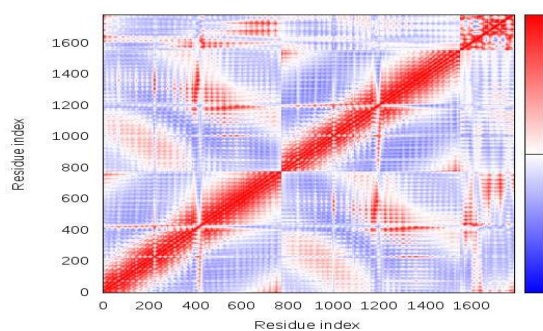
Figure S4. a-f): The dynamic simulation for HEV vaccine construct-TLR6 docked complex.



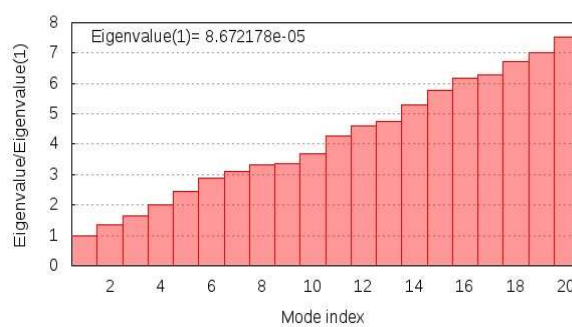
(a)



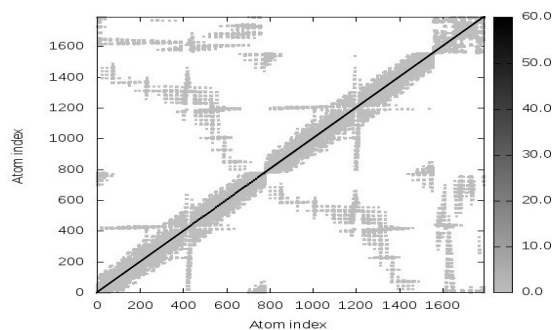
(b)



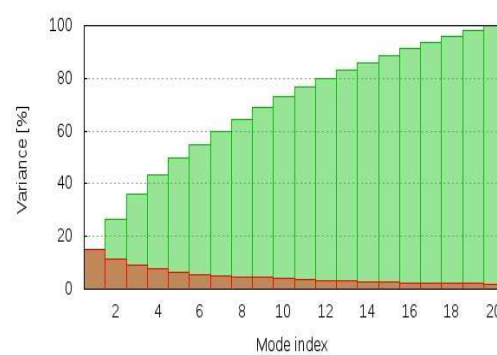
(c)



(d)



(e)



(f)

Figure S5. a-f): The dynamic simulation for HEV vaccine construct-TLR8 docked complex.

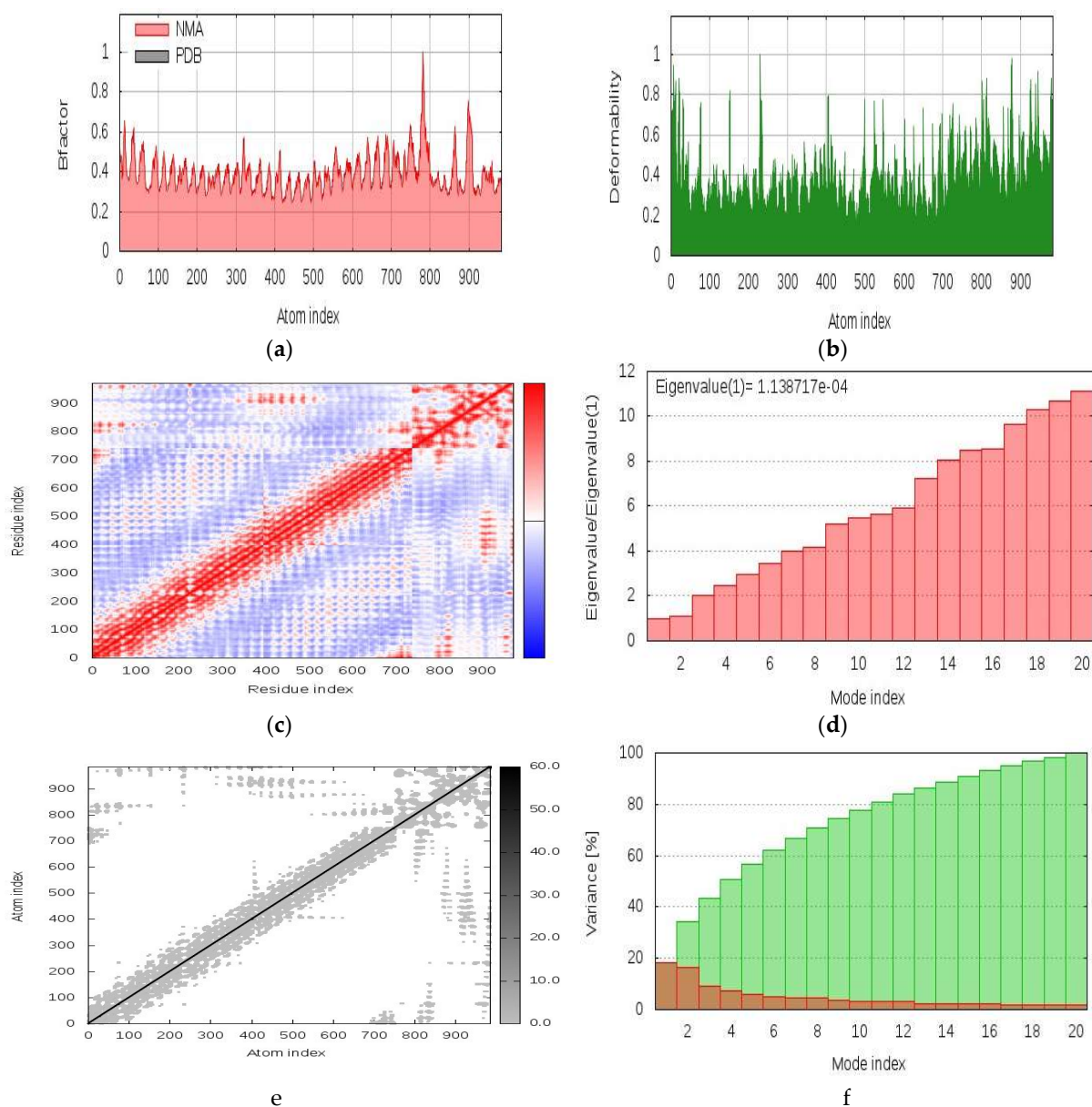


Figure S6. a-f): The dynamic simulation for HEV vaccine construct-TLR9 docked complex.