

Supplementary data to ‘Thermodynamic Analysis of the Steam Reforming of Acetone by the minimization of Gibbs Free Energy (GFE)’

Joshua O. Ighalo^{1,2*}, Faith Uchechukwu Onyema¹, Victor E. Ojukwu¹, Johnbosco C. Egbueri³

¹Department of Chemical Engineering, Nnamdi Azikiwe University, P. M. B. 5025, Awka, Nigeria

²Tim Taylor Department of Chemical Engineering, Kansas State University, Manhattan, KS 66506, USA

³Department of Geology, Chukwuemeka Odumegwu Ojukwu University, Uli, Nigeria

*Corresponding author, Email address: oshea.ighalo@yahoo.com ; jo.ighalo@unizik.edu.ng

Data

The screenshot displays the Aspen Plus V8.8 - aspenONE software interface. The 'Components - Specifications' window is open, showing a table of selected components. The table has four columns: Component ID, Type, Component name, and Alias. The components listed are WATER, ACETO-01, CARBO-01, CO, CH4, and H2, all of which are 'Conventional' types. The interface also shows a sidebar with various toolbars and a search bar at the top right.

Component ID	Type	Component name	Alias
WATER	Conventional	WATER	H2O
ACETO-01	Conventional	ACETONE	C3H6O-1
CARBO-01	Conventional	CARBON-DIOXIDE	CO2
CO	Conventional	CARBON-MONOXIDE	CO
CH4	Conventional	METHANE	CH4
H2	Conventional	HYDROGEN	H2

Figure S1. Component list used in the study.

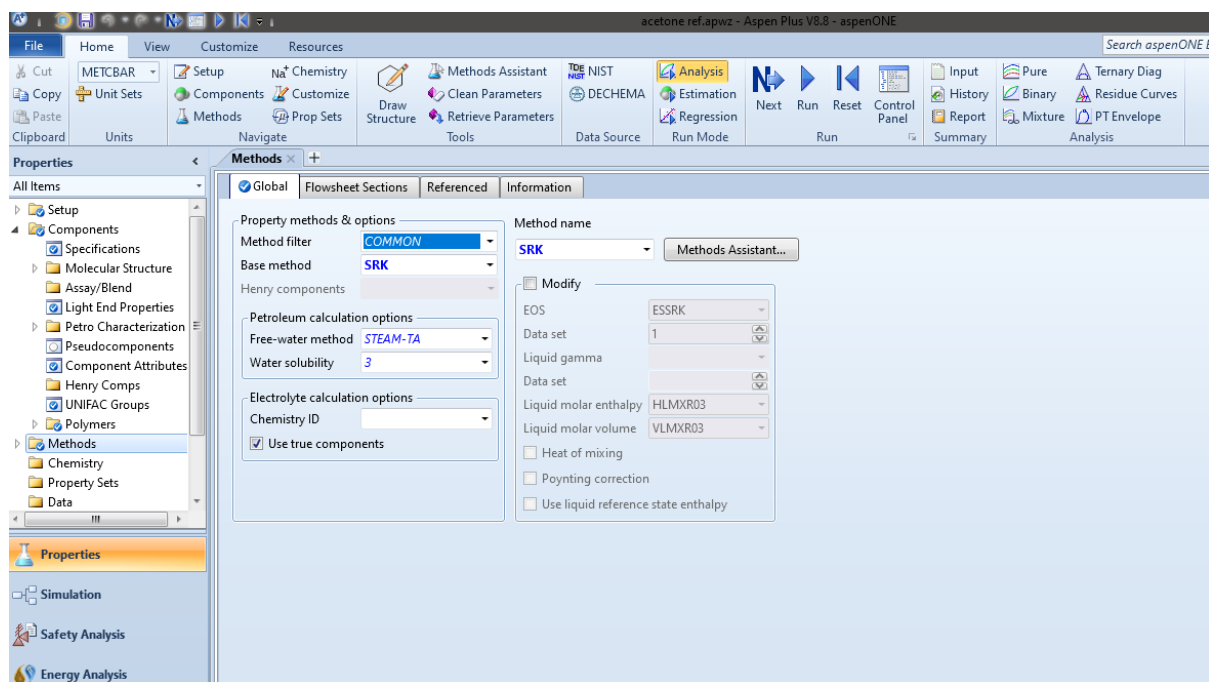


Figure S2. Thermodynamic property method for the analysis.

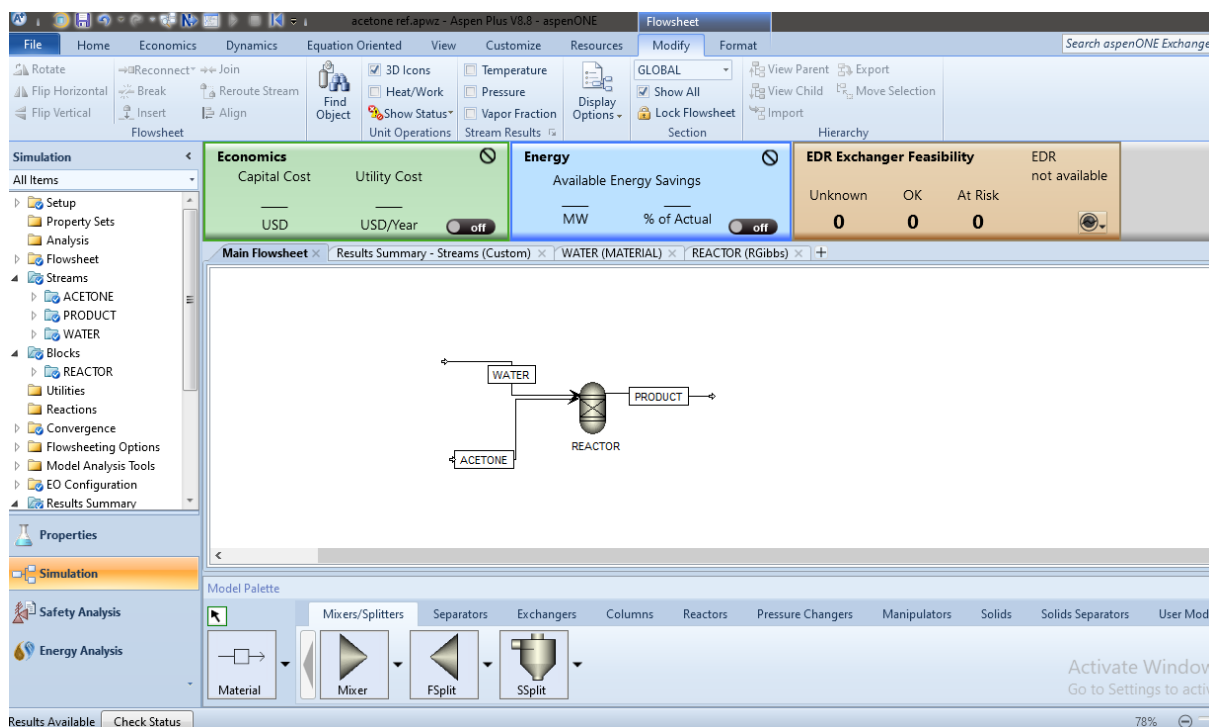


Figure S3. Aspen Plus flowsheet of the analysis.