

Supplementary Materials

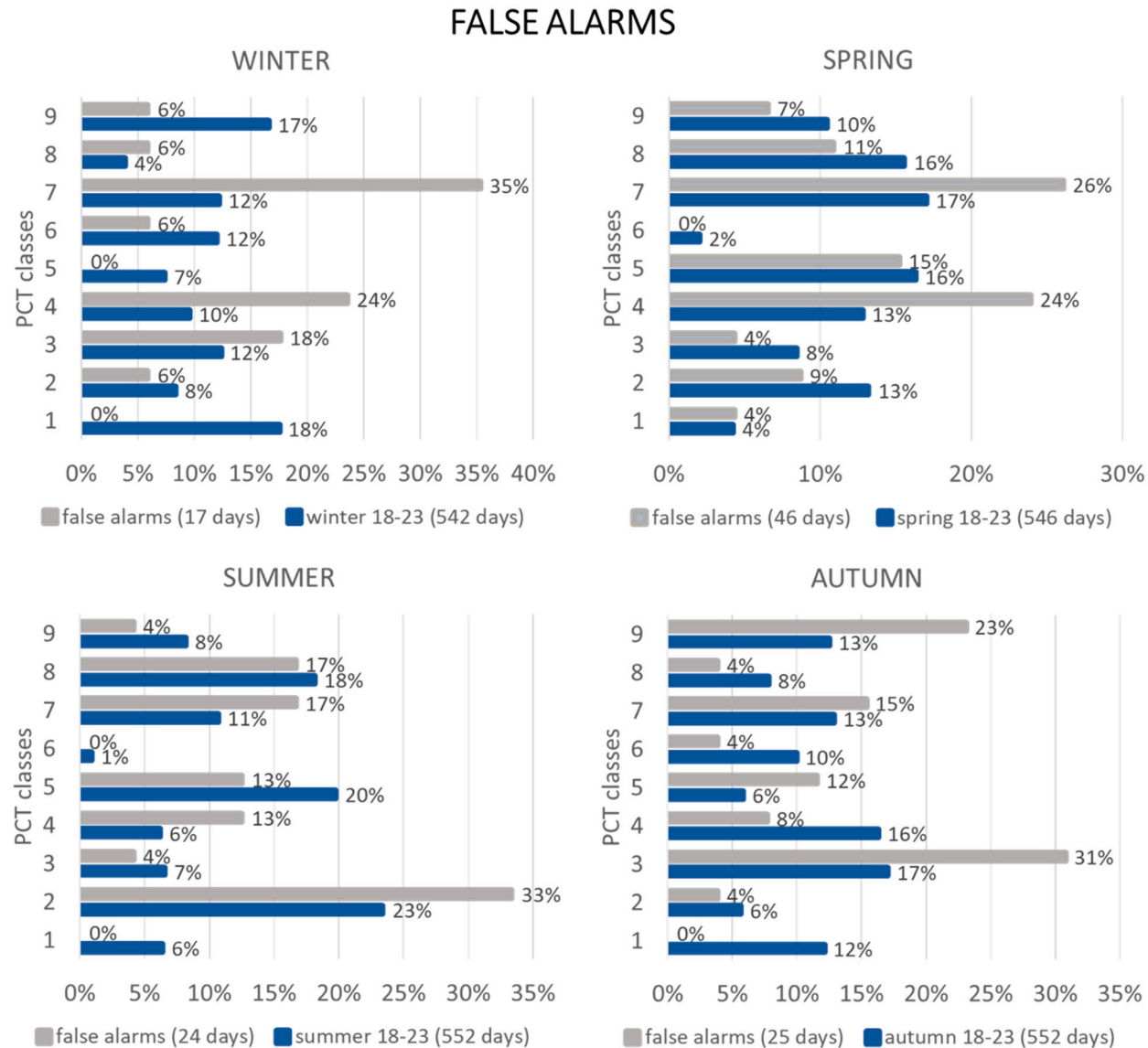


Figure S1. Frequency of occurrence of PCT classes in the six-year period 2018-2023 (blue) or for false alarms (grey), on a seasonal basis.

MISSED ALARMS

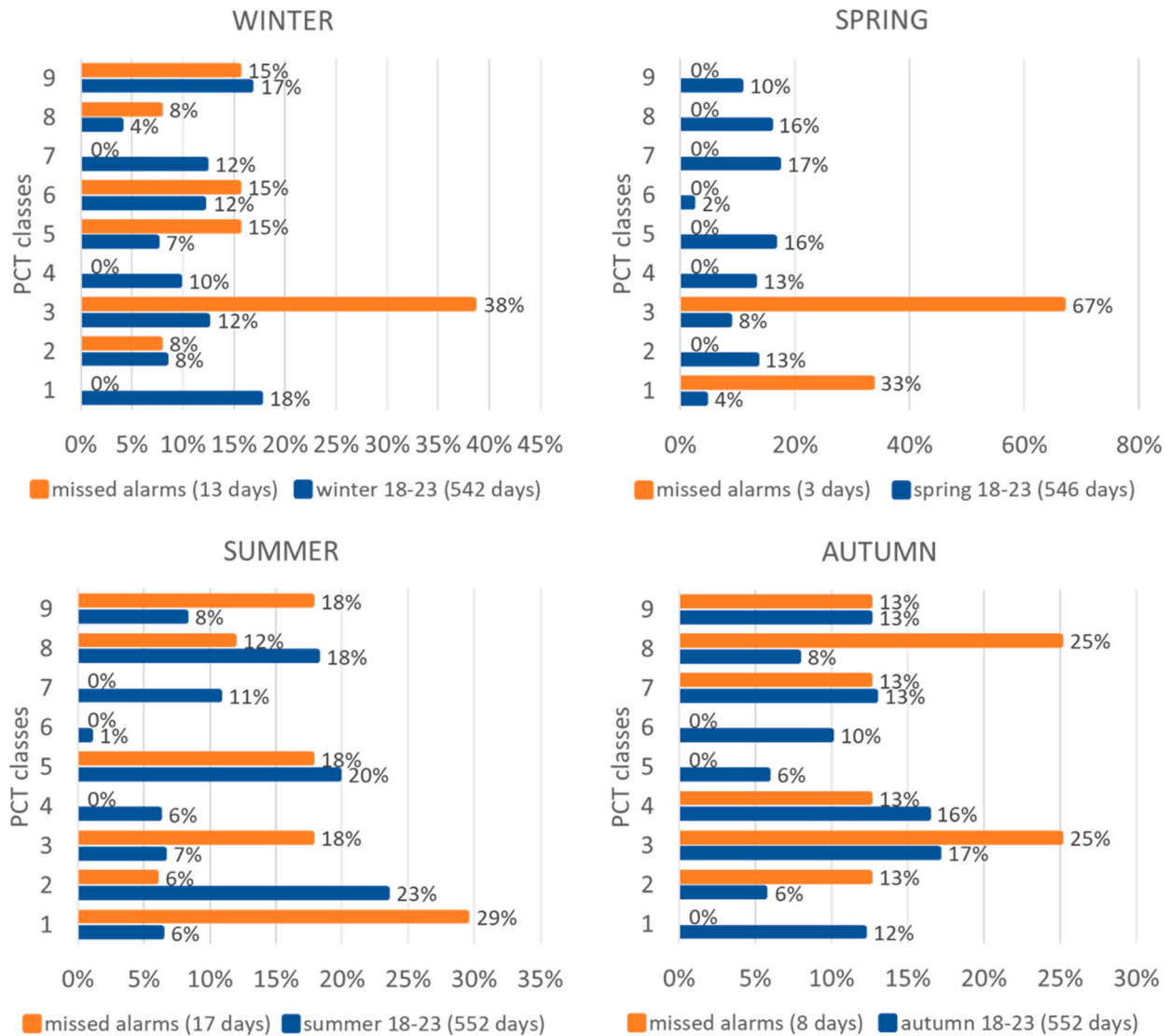


Figure S2. Frequency of occurrence of PCT classes in the six-year period 2018-2023 (blue) or for missed alarms (orange), on a seasonal basis.

period 2018-2023										
	winter		spring		summer		autumn		period 2018-2023	
PCT classes	n days	Frequency	n days	Frequency	n days	Frequency	n days	Frequency	n days	Frequency
1	95	18%	23	4%	35	6%	67	12%	220	10%
2	45	8%	72	13%	129	23%	31	6%	277	13%
3	67	12%	46	8%	36	7%	94	17%	243	11%
4	52	10%	70	13%	34	6%	90	16%	246	11%
5	40	7%	89	16%	109	20%	32	6%	270	12%
6	65	12%	11	2%	5	1%	55	10%	136	6%
7	66	12%	93	17%	59	11%	71	13%	289	13%
8	21	4%	85	16%	100	18%	43	8%	249	11%
9	90	17%	57	10%	45	8%	69	13%	261	12%
Total days	542		546		552		552		2191	
dust days 2018-2023										
	winter		spring		summer		autumn		dust days 2018-2023	
PCT classes	n days	Frequency	n days	Frequency	n days	Frequency	n days	Frequency	n days	Frequency
1	1	4%	3	3%	6	6%	2	6%	12	5%
2	2	7%	4	4%	16	15%	0	0%	22	8%
3	7	26%	6	6%	10	10%	10	31%	33	13%
4	2	7%	21	21%	11	10%	7	22%	41	16%
5	4	15%	19	19%	19	18%	2	6%	44	17%
6	2	7%	1	1%	1	1%	2	6%	6	2%
7	4	15%	14	14%	12	11%	0	0%	30	11%
8	1	4%	22	22%	28	27%	8	25%	59	22%
9	4	15%	9	9%	2	2%	1	3%	16	6%
Total days	27		99		105		32		263	
false alarms 2018-2023										
	winter		spring		summer		autumn		false alarms 2018-2023	
PCT classes	n days	Frequency	n days	Frequency	n days	Frequency	n days	Frequency	n days	Frequency
1	0	0%	2	4%	0	0%	0	0%	2	2%
2	1	6%	4	9%	8	33%	1	4%	14	12%
3	3	18%	2	4%	1	4%	8	31%	14	12%
4	4	24%	11	24%	3	13%	2	8%	20	18%
5	0	0%	7	15%	3	13%	3	12%	13	12%
6	1	6%	0	0%	0	0%	1	4%	2	2%
7	6	35%	12	26%	4	17%	4	15%	26	23%
8	1	6%	5	11%	4	17%	1	4%	11	10%
9	1	6%	3	7%	1	4%	5	23%	10	10%
Total days	17		46		24		25		112	
missed alarms 2018-2023										
	winter		spring		summer		autumn		missed alarms 2018-2023	
PCT classes	n days	Frequency	n days	Frequency	n days	Frequency	n days	Frequency	n days	Frequency
1	0	0%	1	33%	5	29%	0	0%	6	15%
2	1	8%	0	0%	1	6%	1	13%	3	7%
3	5	38%	2	67%	3	18%	2	25%	12	29%
4	0	0%	0	0%	0	0%	1	13%	1	2%
5	2	15%	0	0%	3	18%	0	0%	5	12%
6	2	15%	0	0%	0	0%	0	0%	2	5%
7	0	0%	0	0%	0	0%	1	13%	1	2%
8	1	8%	0	0%	2	12%	2	25%	5	12%
9	2	15%	0	0%	3	18%	1	13%	6	15%
Total days	13		3		17		8		41	

Table S1. Frequency of PCT classes in the six-year period 2018-2023, for dust days, for false alarms, for missed alarms, on a seasonal basis.