

Special Issue

Exercise Physiology and Cardiovascular Metabolism

Message from the Guest Editors

Exercise physiology studies how the body responds and adapts to physical activity and exercise. It encompasses various aspects of human physiology, focusing on the mechanisms and changes that occur during exercise. On the other hand, cardiovascular metabolism specifically examines the metabolic processes related to the heart and blood vessels during physical activity. Both fields play a crucial role in understanding the benefits of exercise on overall health and performance. This Special Issue welcomes manuscripts that use various research methods (e.g., epidemiology, intervention, review, and qualitative studies), to examine the changes in health with new and various exercise modalities.

Guest Editors

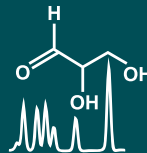
Dr. Sung-Woo Kim

Dr. Hun-Young Park

Dr. Wonil Park

Deadline for manuscript submissions

closed (31 August 2024)



Metabolites

an Open Access Journal
by MDPI

Impact Factor 3.4
CiteScore 5.7
Indexed in PubMed



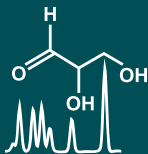
mdpi.com/si/185258

Metabolites

MDPI, Grosspeteranlage 5
4052 Basel, Switzerland
Tel: +41 61 683 77 34
metabolites@mdpi.com

[mdpi.com/journal/
metabolites](https://mdpi.com/journal/metabolites)





Metabolites

an Open Access Journal
by MDPI

Impact Factor 3.4
CiteScore 5.7
Indexed in PubMed



[mdpi.com/journal/
metabolites](https://mdpi.com/journal/metabolites)



About the Journal

Message from the Editor-in-Chief

The metabolome is the result of the combined effects of genetic and environmental influences on metabolic processes. Metabolomic studies can provide a global view of metabolism and thereby improve our understanding of the underlying biology. Advances in metabolomic technologies have shown utility for elucidating mechanisms which underlie fundamental biological processes including disease pathology. *Metabolites* is proud to be part of the development of metabolomics and we look forward to working with many of you to publish high quality metabolomic studies.

Editor-in-Chief

Dr. Amedeo Lonardo

1. Formerly Director of the Simple Operating Unit "Metabolic Syndrome", Azienda Ospedaliero-Universitaria, 41126 Modena, Italy
 2. Formerly Professor of Internal Medicine, School of Specialization of Allergology and Clinical Immunology, University of Modena and Reggio Emilia, 41121 Modena, Italy
-

Author Benefits

High Visibility:

indexed within Scopus, SCIE (Web of Science), PubMed, PMC, Embase, CAPlus / SciFinder, and other databases.

Journal Rank:

JCR - Q2 (Biochemistry and Molecular Biology) / CiteScore - Q2 (Endocrinology, Diabetes and Metabolism)

Rapid Publication:

manuscripts are peer-reviewed and a first decision is provided to authors approximately 13.9 days after submission; acceptance to publication is undertaken in 3.5 days (median values for papers published in this journal in the first half of 2024).