

# Topical Collection

## Sensors in Biomechanics

### Message from the Collection Editors

The aim of this Special Issue is to present recent research findings on development and application of sensor technologies in measurements of human biomechanical and physiological parameters. Authors are encouraged to submit manuscripts for publication on (but not limited to) the following areas:

- Biomechanical sensors in disease assessment, functional diagnosis, treatment, and rehabilitation;
- Biomechanical sensors for assisted living monitoring;
- Biomechanical sensors in gait analysis;
- Biomechanical sensors in sports;
- Novel applications of continuous monitoring of human motion in rehabilitation;
- Dynamic Electromyography;
- Plantar pressure analysis and gaitography;
- IMU for human motion tracking;
- Gyroscopes;
- Force sensors (strain gauge, piezo, etc.);
- Ultrasound sensors;
- Optical tracking systems;
- Challenges in data processing, simulation, and validation;
- Challenges in data sensor fusion;
- Technical challenges in assuring accuracy and robustness of the provided measures (i.e., sensor placement, measurement drift, repeatability of the provided measures);
- Wireless sensors for human motion tracking;

---

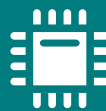
### Collection Editors

Dr. Zimi Sawacha

Dr. Giuseppe Vannozzi

Dr. Andrea Merlo

---



## Sensors

---

an Open Access Journal  
by MDPI

---

Impact Factor 3.4  
CiteScore 7.3  
Indexed in PubMed

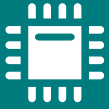


[mdpi.com/si/42697](https://mdpi.com/si/42697)

*Sensors*  
MDPI, Grosspeteranlage 5  
4052 Basel, Switzerland  
Tel: +41 61 683 77 34  
[sensors@mdpi.com](mailto:sensors@mdpi.com)

[mdpi.com/journal/  
sensors](https://mdpi.com/journal/sensors)





# Sensors

---

an Open Access Journal  
by MDPI

---

Impact Factor 3.4  
CiteScore 7.3  
Indexed in PubMed



[mdpi.com/journal/  
sensors](https://mdpi.com/journal/sensors)



## About the Journal

### Message from the Editor-in-Chief

*Sensors* is a leading journal devoted to fast publication of the latest achievements of technological developments and scientific research in the huge area of physical, chemical and biochemical sensors, including remote sensing and sensor networks. Both experimental and theoretical papers are published, including all aspects of sensor design, technology, proof of concept and application. *Sensors* organizes Special Issues devoted to specific sensing areas and applications each year.

---

### Editor-in-Chief

Prof. Dr. Vittorio M. N. Passaro

Dipartimento di Ingegneria Elettrica e dell'Informazione (Department of Electrical and Information Engineering), Politecnico di Bari, Via Edoardo Orabona n. 4, 70125 Bari, Italy

---

### Author Benefits

#### Open Access:

free for readers, with article processing charges (APC) paid by authors or their institutions.

#### High Visibility:

indexed within Scopus, SCIE (Web of Science), PubMed, MEDLINE, PMC, Ei Compendex, Inspec, Astrophysics Data System, and other databases.

#### Journal Rank:

JCR - Q2 (Chemistry, Analytical) / CiteScore - Q1 (Instrumentation)