

## Special Issue

# Recent Advance in Mobile Edge Computing and Wireless Communication Technology

### Message from the Guest Editors

Mobile edge computing focuses on sinking service platforms with computing, storage, and communications capabilities to the edge of the network, and require that mobile users offload their computationally intensive tasks to the mobile edge computing facilities. Mobile edge computing emphasizes proximity to mobile users in order to reduce latency in network operations and service delivery. Although mobile edge computing can fulfill the high computational requirements of users, it takes more energy and delay to offload tasks to the server. To better utilize the advantages of mobile edge computing, some methods are needed to reduce the delay and energy consumption. this Special Issue encourages authors from academia and industry to submit original research papers related to advanced technological innovation for mobile edge computing and wireless communication networks.

---

### Guest Editors

Prof. Dr. Juan Fang

Faculty of Information Technology, Beijing University of Technology, Beijing 100124, China

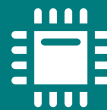
Dr. Jupeng Ding

Associate Professor, School of Computer Science and Technology (School of Cyberspace Security), Xinjiang University, Urumqi 830046, China

---

### Deadline for manuscript submissions

closed (20 February 2023)



## Sensors

---

an Open Access Journal  
by MDPI

---

Impact Factor 3.4  
CiteScore 7.3  
Indexed in PubMed



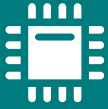
[mdpi.com/si/128020](https://mdpi.com/si/128020)

*Sensors*

MDPI, Grosspeteranlage 5  
4052 Basel, Switzerland  
Tel: +41 61 683 77 34  
[sensors@mdpi.com](mailto:sensors@mdpi.com)

[mdpi.com/journal/  
sensors](https://mdpi.com/journal/sensors)





# Sensors

---

an Open Access Journal  
by MDPI

---

Impact Factor 3.4  
CiteScore 7.3  
Indexed in PubMed



[mdpi.com/journal/  
sensors](https://mdpi.com/journal/sensors)



## About the Journal

### Message from the Editor-in-Chief

*Sensors* is a leading journal devoted to fast publication of the latest achievements of technological developments and scientific research in the huge area of physical, chemical and biochemical sensors, including remote sensing and sensor networks. Both experimental and theoretical papers are published, including all aspects of sensor design, technology, proof of concept and application. *Sensors* organizes Special Issues devoted to specific sensing areas and applications each year.

---

### Editor-in-Chief

Prof. Dr. Vittorio M. N. Passaro

Dipartimento di Ingegneria Elettrica e dell'Informazione (Department of Electrical and Information Engineering), Politecnico di Bari, Via Edoardo Orabona n. 4, 70125 Bari, Italy

---

### Author Benefits

#### Open Access:

free for readers, with article processing charges (APC) paid by authors or their institutions.

#### High Visibility:

indexed within Scopus, SCIE (Web of Science), PubMed, MEDLINE, PMC, Ei Compendex, Inspec, Astrophysics Data System, and other databases.

#### Journal Rank:

JCR - Q2 (Chemistry, Analytical) / CiteScore - Q1 (Instrumentation)