

## Special Issue

# Sensor-Based Biometrics Recognition and Processing

### Message from the Guest Editors

In this Special Issue, all issues related to sensors can be addressed regarding their use for biometrics-based authentication/identification purposes. In addition to new biometrics sensors, topics such as pre-processing, (signal or image) quality enhancement, and performance improvement through multi-sensor data fusion or multi-data fusion from single sensors for human data acquired through the sensor can be considered. In addition, topics such as anti-spoofing and new databases considering various sensor variations can also be considered. New neural network models or matching methods for biometrics can also be proposed. Biometrics methods that are robust to limited information and occlusion issues in the COVID-19 pandemic are also a welcome topic.

- biometrics sensors
- image/signal pre-processing for biometrics
- image/signal enhancement for biometrics
- multi-sensor data fusion
- multi-data fusion from single sensors
- biometrics anti-spoofing considering sensor characteristics
- new biometrics databases considering various sensor variations
- new neural network models/matching algorithms
- new methods robust to limited information/occlusion issues

---

### Guest Editors

Prof. Dr. Eui Chul Lee

Department of Intelligent Engineering Informatics for Human,  
Sangmyung University, Seoul 03016, Republic of Korea

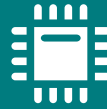
Dr. Gi Pyo Nam

Center for Artificial Intelligence, Korea Institute of Science and  
Technology (KIST)

---

### Deadline for manuscript submissions

closed (30 June 2021)



## Sensors

---

an Open Access Journal  
by MDPI

---

Impact Factor 3.4  
CiteScore 7.3  
Indexed in PubMed



[mdpi.com/si/72476](https://mdpi.com/si/72476)

*Sensors*

MDPI, Grosspeteranlage 5  
4052 Basel, Switzerland  
Tel: +41 61 683 77 34  
[sensors@mdpi.com](mailto:sensors@mdpi.com)

[mdpi.com/journal/  
sensors](https://mdpi.com/journal/sensors)





# Sensors

---

an Open Access Journal  
by MDPI

---

Impact Factor 3.4  
CiteScore 7.3  
Indexed in PubMed



[mdpi.com/journal/  
sensors](https://mdpi.com/journal/sensors)



## About the Journal

### Message from the Editor-in-Chief

*Sensors* is a leading journal devoted to fast publication of the latest achievements of technological developments and scientific research in the huge area of physical, chemical and biochemical sensors, including remote sensing and sensor networks. Both experimental and theoretical papers are published, including all aspects of sensor design, technology, proof of concept and application. *Sensors* organizes Special Issues devoted to specific sensing areas and applications each year.

---

### Editor-in-Chief

Prof. Dr. Vittorio M. N. Passaro

Dipartimento di Ingegneria Elettrica e dell'Informazione (Department of Electrical and Information Engineering), Politecnico di Bari, Via Edoardo Orabona n. 4, 70125 Bari, Italy

---

### Author Benefits

#### Open Access:

free for readers, with article processing charges (APC) paid by authors or their institutions.

#### High Visibility:

indexed within Scopus, SCIE (Web of Science), PubMed, MEDLINE, PMC, Ei Compendex, Inspec, Astrophysics Data System, and other databases.

#### Journal Rank:

JCR - Q2 (Chemistry, Analytical) / CiteScore - Q1 (Instrumentation)